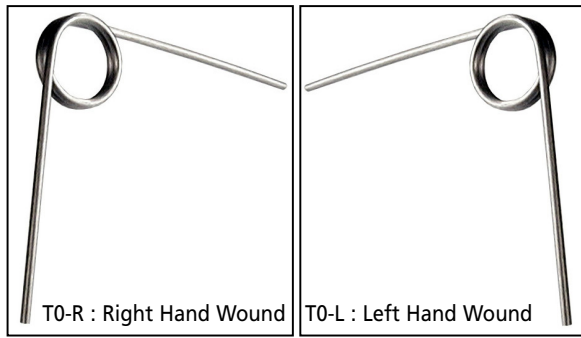


ANTI-VIBRATION & SPRINGS

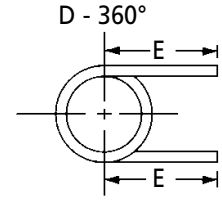
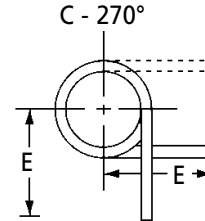
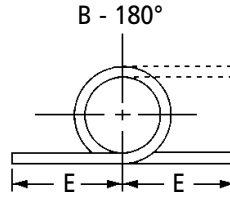
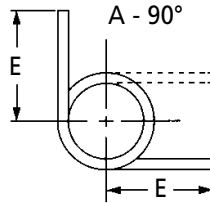
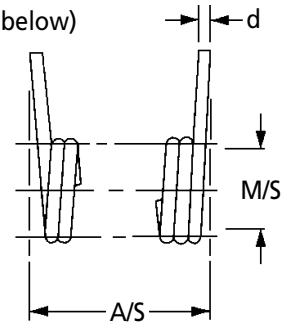
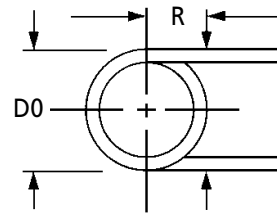
TO

Torsion Springs

302 Stainless Steel : 0.3 - 0.8mm Wire



L - Left Hand Wound Helix (Shown below)
R - Right Hand Wound Helix



Discounts: 6+ -5% 11+ -10% 26+ -20% 51+ -25% 100+ -30% 200+ -50%

Part Number		Wire Ø d	Outside Ø mm Do	Torque N/mm T	Loaded Position R	Recom. Size mm M/S	Leg Length mm E	Min. Axle Size mm A/S	Degrees Deflection	Price Each 1 - 5
Right Hand Wound	Left Hand Wound									
T012090055R	T012090055L	0.30	2.36	5.31	4.75	1.40	9.52	1.17	A - 90°	£1.65
T012180067R	T012180067L	0.30	2.77	5.31	4.75	1.70	9.52	2.18	B - 180°	£1.65
T012270062R	T012270062L	0.30	2.59	5.31	4.75	1.57	9.52	3.53	C - 270°	£1.65
T012180109R	T012180109L	0.30	4.22	5.31	6.35	2.77	12.70	1.50	B - 180°	£1.65
T012270109R	T012270109L	0.30	4.32	5.31	6.35	2.77	12.70	2.18	C - 270°	£1.65
T012360109R	T012360109L	0.30	4.42	5.31	6.35	2.77	12.70	2.81	D - 360°	£1.65
T017090093R	T017090093L	0.43	4.06	13.22	6.35	2.36	12.70	2.06	A - 90°	£1.65
T017180093R	T017180093L	0.43	4.37	13.22	6.35	2.36	12.70	3.23	B - 180°	£1.65
T017270093R	T017270093L	0.43	4.06	13.22	6.35	2.36	12.70	4.88	C - 270°	£1.65
T017180156R	T017180156L	0.43	6.32	13.22	9.52	3.96	19.05	2.39	B - 180°	£2.80
T017270156R	T017270156L	0.43	6.58	13.22	9.52	3.96	19.05	3.13	C - 270°	£2.80
T017360140R	T017360140L	0.43	5.97	13.22	9.52	3.56	19.05	4.32	D - 360°	£2.80
T020090109R	T020090109L	0.51	4.85	21.10	9.52	2.77	19.05	2.41	A - 90°	£1.65
T020180109R	T020180109L	0.51	4.55	21.10	9.52	2.77	19.05	4.32	B - 180°	£1.65
T020270093R	T020270093L	0.51	4.45	21.10	9.52	2.36	19.05	6.22	C - 270°	£1.65
T020180140R	T020180140L	0.51	6.15	21.10	12.70	3.56	25.40	3.30	B - 180°	£2.80
T020270172R	T020270172L	0.51	6.81	21.10	12.70	4.37	25.40	4.19	C - 270°	£2.80
T020360156R	T020360156L	0.51	6.45	21.10	12.70	3.96	25.40	6.35	D - 360°	£2.80
T025090140R	T025090140L	0.64	5.97	42.40	9.52	3.56	19.05	2.44	A - 90°	£1.65
T025180140R	T025180140L	0.64	5.69	42.40	9.52	3.56	19.05	5.23	B - 180°	£1.65
T025270140R	T025270140L	0.64	5.56	42.40	9.52	3.56	19.05	8.03	C - 270°	£1.65
T025180203R	T025180203L	0.64	7.72	42.40	12.70	5.16	25.40	3.84	B - 180°	£2.80
T025270218R	T025270218L	0.64	8.64	42.40	12.70	5.54	25.40	5.23	C - 270°	£2.80
T025360218R	T025360218L	0.64	8.23	42.40	12.70	5.54	25.40	7.32	D - 360°	£2.80
T032090172R	T032090172L	0.81	7.32	92.70	12.70	4.34	25.40	3.86	A - 90°	£2.80
T032180156R	T032180156L	0.81	6.86	92.70	12.70	3.96	25.40	6.91	B - 180°	£2.80
T032270156R	T032270156L	0.81	6.71	92.70	12.70	3.96	25.40	9.70	C - 270°	£2.80
T032180218R	T032180218L	0.81	9.30	92.70	12.70	5.54	25.40	5.28	B - 180°	£3.31
T032270218R	T032270218L	0.81	8.99	92.70	12.70	5.54	25.40	7.52	C - 270°	£3.31
T032360234R	T032360234L	0.81	9.70	92.70	12.70	5.95	25.40	8.94	D - 360°	£3.31
T035090187R	T035090187L	0.89	8.00	113.00	15.88	4.75	31.75	3.43	A - 90°	£2.80
T035180187R	T035180187L	0.89	7.70	113.00	15.88	4.75	31.75	7.37	B - 180°	£2.80
T035270187R	T035270187L	0.89	7.90	113.00	15.88	4.75	31.75	11.23	C - 270°	£2.80
T035180281R	T035180281L	0.89	11.43	113.00	15.88	7.14	31.75	5.38	B - 180°	£3.31
T035270281R	T035270281L	0.89	11.05	113.00	15.88	7.14	31.75	8.33	C - 270°	£3.31
T035360312R	T035360312L	0.89	11.96	113.00	15.88	7.92	31.75	10.29	D - 360°	£3.31

Material

Stainless Steel. Commercial Type 302 AMS 5688.

+44 (0)1246 455500
+44 (0)1246 455522

ondrives

sales@ondrives.com
www.ondrives.com

Product information updated 1st April 2010 and subject to change. Please contact Sales for the latest prices and availability.