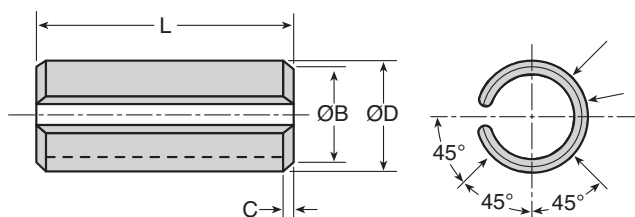
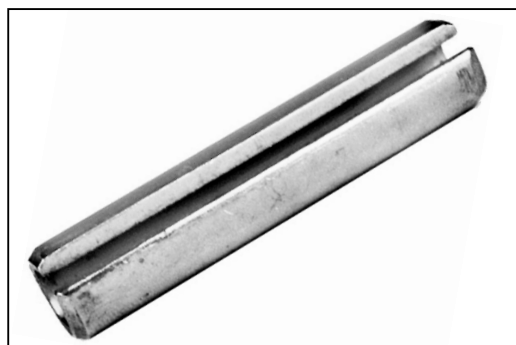


**SRP**

# MECHANICAL

## Stainless Slotted Spring Pins

ISO 8752 : 1.5 - 4mm Dia.


**Discounts:** 31+ -15%   50+ -30%   100+ -50%   200+ -60%   1000+ -65%   2000+ -72%

Part Number	Diameter (ØD)			L	Chamfer		Hole		Price Each 1 - 30	Part Number	Diameter (ØD)			L	Chamfer		Hole		Price Each 1 - 30
	Nom	Min	Max		ØB	C	Min	Max			Nom	Min	Max		ØB	C	Min	Max	
SRP1.5-5	1.5	1.70	1.80	5	1.40	0.50	1.50	1.60	£0.09	SRP2.5-22	2.5	2.80	2.90	22	2.40	0.70	2.50	2.60	£0.21
SRP1.5-6	1.5	1.70	1.80	6	1.40	0.50	1.50	1.60	£0.09	SRP2.5-24	2.5	2.80	2.90	24	2.40	0.70	2.50	2.60	£0.22
SRP1.5-8	1.5	1.70	1.80	8	1.40	0.50	1.50	1.60	£0.10	SRP2.5-26	2.5	2.80	2.90	26	2.40	0.70	2.50	2.60	£0.22
SRP1.5-10	1.5	1.70	1.80	10	1.40	0.50	1.50	1.60	£0.11	SRP2.5-30	2.5	2.80	2.90	30	2.40	0.70	2.50	2.60	£0.22
SRP1.5-12	1.5	1.70	1.80	12	1.40	0.50	1.50	1.60	£0.11	SRP3-5	3.0	3.30	3.50	5	2.90	0.90	3.00	3.10	£0.12
SRP1.5-14	1.5	1.70	1.80	14	1.40	0.50	1.50	1.60	£0.11	SRP3-6	3.0	3.30	3.50	6	2.90	0.90	3.00	3.10	£0.13
SRP1.5-16	1.5	1.70	1.80	16	1.40	0.50	1.50	1.60	£0.11	SRP3-8	3.0	3.30	3.50	8	2.90	0.90	3.00	3.10	£0.14
SRP1.5-18	1.5	1.70	1.80	18	1.40	0.50	1.50	1.60	£0.12	SRP3-10	3.0	3.30	3.50	10	2.90	0.90	3.00	3.10	£0.14
SRP1.5-20	1.5	1.70	1.80	20	1.40	0.50	1.50	1.60	£0.12	SRP3-12	3.0	3.30	3.50	12	2.90	0.90	3.00	3.10	£0.15
SRP2-4	2.0	2.30	2.40	4	1.90	0.70	2.00	2.10	£0.09	SRP3-14	3.0	3.30	3.50	14	2.90	0.90	3.00	3.10	£0.15
SRP2-5	2.0	2.30	2.40	5	1.90	0.70	2.00	2.10	£0.10	SRP3-16	3.0	3.30	3.50	16	2.90	0.90	3.00	3.10	£0.16
SRP2-6	2.0	2.30	2.40	6	1.90	0.70	2.00	2.10	£0.10	SRP3-18	3.0	3.30	3.50	18	2.90	0.90	3.00	3.10	£0.19
SRP2-8	2.0	2.30	2.40	8	1.90	0.70	2.00	2.10	£0.11	SRP3-20	3.0	3.30	3.50	20	2.90	0.90	3.00	3.10	£0.22
SRP2-10	2.0	2.30	2.40	10	1.90	0.70	2.00	2.10	£0.11	SRP3-22	3.0	3.30	3.50	22	2.90	0.90	3.00	3.10	£0.25
SRP2-12	2.0	2.30	2.40	12	1.90	0.70	2.00	2.10	£0.12	SRP3-24	3.0	3.30	3.50	24	2.90	0.90	3.00	3.10	£0.26
SRP2-14	2.0	2.30	2.40	14	1.90	0.70	2.00	2.10	£0.12	SRP3-26	3.0	3.30	3.50	26	2.90	0.90	3.00	3.10	£0.27
SRP2-16	2.0	2.30	2.40	16	1.90	0.70	2.00	2.10	£0.12	SRP3-28	3.0	3.30	3.50	28	2.90	0.90	3.00	3.10	£0.29
SRP2-18	2.0	2.30	2.40	18	1.90	0.70	2.00	2.10	£0.12	SRP3-30	3.0	3.30	3.50	30	2.90	0.90	3.00	3.10	£0.30
SRP2-20	2.0	2.30	2.40	20	1.90	0.70	2.00	2.10	£0.13	SRP3-32	3.0	3.30	3.50	32	2.90	0.90	3.00	3.10	£0.31
SRP2-22	2.0	2.30	2.40	22	1.90	0.70	2.00	2.10	£0.13	SRP3-35	3.0	3.30	3.50	35	2.90	0.90	3.00	3.10	£0.33
SRP2-24	2.0	2.30	2.40	24	1.90	0.70	2.00	2.10	£0.14	SRP3-40	3.0	3.30	3.50	40	2.90	0.90	3.00	3.10	£0.39
SRP2-26	2.0	2.30	2.40	26	1.90	0.70	2.00	2.10	£0.15	SRP4-6	4.0	4.40	4.60	6	3.90	1.10	4.00	4.12	£0.13
SRP2-28	2.0	2.30	2.40	28	1.90	0.70	2.00	2.10	£0.19	SRP4-8	4.0	4.40	4.60	8	3.90	1.10	4.00	4.12	£0.15
SRP2-30	2.0	2.30	2.40	30	1.90	0.70	2.00	2.10	£0.19	SRP4-10	4.0	4.40	4.60	10	3.90	1.10	4.00	4.12	£0.19
SRP2.5-5	2.5	2.80	2.90	5	2.40	0.70	2.50	2.60	£0.13	SRP4-12	4.0	4.40	4.60	12	3.90	1.10	4.00	4.12	£0.25
SRP2.5-6	2.5	2.80	2.90	6	2.40	0.70	2.50	2.60	£0.13	SRP4-14	4.0	4.40	4.60	14	3.90	1.10	4.00	4.12	£0.27
SRP2.5-8	2.5	2.80	2.90	8	2.40	0.70	2.50	2.60	£0.13	SRP4-16	4.0	4.40	4.60	16	3.90	1.10	4.00	4.12	£0.29
SRP2.5-10	2.5	2.80	2.90	10	2.40	0.70	2.50	2.60	£0.13	SRP4-18	4.0	4.40	4.60	18	3.90	1.10	4.00	4.12	£0.32
SRP2.5-12	2.5	2.80	2.90	12	2.40	0.70	2.50	2.60	£0.13	SRP4-20	4.0	4.40	4.60	20	3.90	1.10	4.00	4.12	£0.35
SRP2.5-14	2.5	2.80	2.90	14	2.40	0.70	2.50	2.60	£0.15	SRP4-22	4.0	4.40	4.60	22	3.90	1.10	4.00	4.12	£0.40
SRP2.5-16	2.5	2.80	2.90	16	2.40	0.70	2.50	2.60	£0.15	SRP4-24	4.0	4.40	4.60	24	3.90	1.10	4.00	4.12	£0.45
SRP2.5-18	2.5	2.80	2.90	18	2.40	0.70	2.50	2.60	£0.19	SRP4-26	4.0	4.40	4.60	26	3.90	1.10	4.00	4.12	£0.50
SRP2.5-20	2.5	2.80	2.90	20	2.40	0.70	2.50	2.60	£0.19	SRP4-28	4.0	4.40	4.60	28	3.90	1.10	4.00	4.12	£0.52

### Material

Stainless Steel Grade 304 DIN 1481, ISO 8752

### Performance

Uniform strength and flexibility. Absorbs shock and vibration. Closer diameter tolerances. Equal stress distribution  
Wider hole tolerance. Conforms to hole. Swaged chamfers. Low insertion pressure - radial tension

### Other Info.

Prices are listed per individual pin.

+44 (0)1246 455500

+44 (0)1246 455522

**ondrives**

sales@ondrives.com

www.ondrives.com

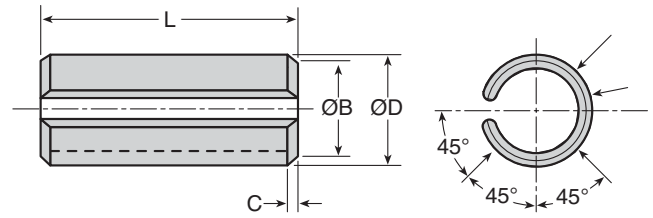
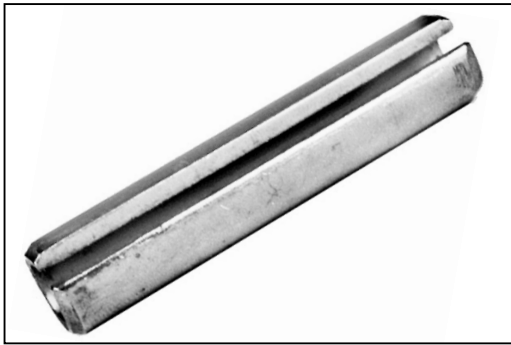
Product information updated 1st April 2011 and subject to change. Please contact Sales for the latest prices and availability.

# MECHANICAL

## Stainless Slotted Spring Pins

ISO 8752 : 4 - 10mm Dia.

SRP



**Discounts:** 31+ -15% | 50+ -30% | 100+ -50% | 200+ -60% | 1000+ -65% | 2000+ -72%

Part Number	Diameter (ØD)			L	Chamfer		Hole		Price Each 1 - 30	Part Number	Diameter (ØD)			L	Chamfer		Hole		Price Each 1 - 30
	Nom	Min	Max		ØB	C	Min	Max			Nom	Min	Max		ØB	C	Min	Max	
SRP4-30	4	4.40	4.60	30	3.90	1.10	4.00	4.12	£0.56	SRP6-32	6	6.40	6.70	32	5.85	1.50	6.00	6.12	£1.20
SRP4-35	4	4.40	4.60	35	3.90	1.10	4.00	4.12	£0.63	SRP6-35	6	6.40	6.70	35	5.85	1.50	6.00	6.12	£1.34
SRP4-40	4	4.40	4.60	40	3.90	1.10	4.00	4.12	£0.68	SRP6-40	6	6.40	6.70	40	5.85	1.50	6.00	6.12	£1.52
SRP4-45	4	4.40	4.60	45	3.90	1.10	4.00	4.12	£0.76	SRP6-45	6	6.40	6.70	45	5.85	1.50	6.00	6.12	£1.63
SRP4-50	4	4.40	4.60	50	3.90	1.10	4.00	4.12	£0.82	SRP6-50	6	6.40	6.70	50	5.85	1.50	6.00	6.12	£1.78
SRP5-8	5	5.40	5.60	8	4.85	1.30	5.00	5.12	£0.27	SRP8-10	8	8.80	8.80	10	7.80	2.00	8.00	8.15	£0.70
SRP5-10	5	5.40	5.60	10	4.85	1.30	5.00	5.12	£0.31	SRP8-12	8	8.80	8.80	12	7.80	2.00	8.00	8.15	£0.81
SRP5-12	5	5.40	5.60	12	4.85	1.30	5.00	5.12	£0.35	SRP8-14	8	8.80	8.80	14	7.80	2.00	8.00	8.15	£0.98
SRP5-14	5	5.40	5.60	14	4.85	1.30	5.00	5.12	£0.43	SRP8-16	8	8.80	8.80	16	7.80	2.00	8.00	8.15	£0.98
SRP5-16	5	5.40	5.60	16	4.85	1.30	5.00	5.12	£0.48	SRP8-18	8	8.80	8.80	18	7.80	2.00	8.00	8.15	£1.03
SRP5-18	5	5.40	5.60	18	4.85	1.30	5.00	5.12	£0.52	SRP8-20	8	8.80	8.80	20	7.80	2.00	8.00	8.15	£1.17
SRP5-20	5	5.40	5.60	20	4.85	1.30	5.00	5.12	£0.58	SRP8-22	8	8.80	8.80	22	7.80	2.00	8.00	8.15	£1.26
SRP5-22	5	5.40	5.60	22	4.85	1.30	5.00	5.12	£0.63	SRP8-24	8	8.80	8.80	24	7.80	2.00	8.00	8.15	£1.37
SRP5-24	5	5.40	5.60	24	4.85	1.30	5.00	5.12	£0.67	SRP8-26	8	8.80	8.80	26	7.80	2.00	8.00	8.15	£1.42
SRP5-26	5	5.40	5.60	26	4.85	1.30	5.00	5.12	£0.72	SRP8-28	8	8.80	8.80	28	7.80	2.00	8.00	8.15	£1.57
SRP5-28	5	5.40	5.60	28	4.85	1.30	5.00	5.12	£0.78	SRP8-30	8	8.80	8.80	30	7.80	2.00	8.00	8.15	£1.64
SRP5-30	5	5.40	5.60	30	4.85	1.30	5.00	5.12	£0.82	SRP8-32	8	8.80	8.80	32	7.80	2.00	8.00	8.15	£1.81
SRP5-32	5	5.40	5.60	32	4.85	1.30	5.00	5.12	£0.88	SRP8-35	8	8.80	8.80	35	7.80	2.00	8.00	8.15	£1.89
SRP5-35	5	5.40	5.60	35	4.85	1.30	5.00	5.12	£0.94	SRP8-40	8	8.80	8.80	40	7.80	2.00	8.00	8.15	£1.91
SRP5-40	5	5.40	5.60	40	4.85	1.30	5.00	5.12	£1.05	SRP8-45	8	8.80	8.80	45	7.80	2.00	8.00	8.15	£1.94
SRP5-45	5	5.40	5.60	45	4.85	1.30	5.00	5.12	£1.14	SRP8-50	8	8.80	8.80	50	7.80	2.00	8.00	8.15	£1.94
SRP5-50	5	5.40	5.60	50	4.85	1.30	5.00	5.12	£1.26	SRP10-16	10	10.50	10.80	16	9.75	2.50	10.00	10.15	£P.O.A
SRP6-10	6	6.40	6.70	10	5.85	1.50	6.00	6.12	£0.43	SRP10-18	10	10.50	10.80	18	9.75	2.50	10.00	10.15	£P.O.A
SRP6-12	6	6.40	6.70	12	5.85	1.50	6.00	6.12	£0.53	SRP10-20	10	10.50	10.80	20	9.75	2.50	10.00	10.15	£1.73
SRP6-14	6	6.40	6.70	14	5.85	1.50	6.00	6.12	£0.60	SRP10-22	10	10.50	10.80	22	9.75	2.50	10.00	10.15	£1.81
SRP6-16	6	6.40	6.70	16	5.85	1.50	6.00	6.12	£0.66	SRP10-24	10	10.50	10.80	24	9.75	2.50	10.00	10.15	£1.92
SRP6-18	6	6.40	6.70	18	5.85	1.50	6.00	6.12	£0.72	SRP10-26	10	10.50	10.80	26	9.75	2.50	10.00	10.15	£2.01
SRP6-20	6	6.40	6.70	20	5.85	1.50	6.00	6.12	£0.80	SRP10-28	10	10.50	10.80	28	9.75	2.50	10.00	10.15	£2.10
SRP6-22	6	6.40	6.70	22	5.85	1.50	6.00	6.12	£0.88	SRP10-30	10	10.50	10.80	30	9.75	2.50	10.00	10.15	£2.22
SRP6-24	6	6.40	6.70	24	5.85	1.50	6.00	6.12	£0.94	SRP10-32	10	10.50	10.80	32	9.75	2.50	10.00	10.15	£2.22
SRP6-26	6	6.40	6.70	26	5.85	1.50	6.00	6.12	£1.02	SRP10-35	10	10.50	10.80	35	9.75	2.50	10.00	10.15	£2.24
SRP6-28	6	6.40	6.70	28	5.85	1.50	6.00	6.12	£1.08	SRP10-40	10	10.50	10.80	40	9.75	2.50	10.00	10.15	£2.26
SRP6-30	6	6.40	6.70	30	5.85	1.50	6.00	6.12	£1.14	SRP10-50	10	10.50	10.80	50	9.75	2.50	10.00	10.15	£2.33

### Material

Stainless Steel Grade 304 DIN 1481, ISO 8752

### Performance

Uniform strength and flexibility. Absorbs shock and vibration. Closer diameter tolerances. Equal stress distribution  
Wider hole tolerance. Conforms to hole. Swaged chamfers. Low insertion pressure - radial tension

### Other Info.

Prices are listed per individual pin.

+44 (0)1246 455500  
+44 (0)1246 455522

**ondrives**

sales@ondrives.com  
www.ondrives.com

Product information updated 1st April 2011 and subject to change. Please contact Sales for the latest prices and availability.