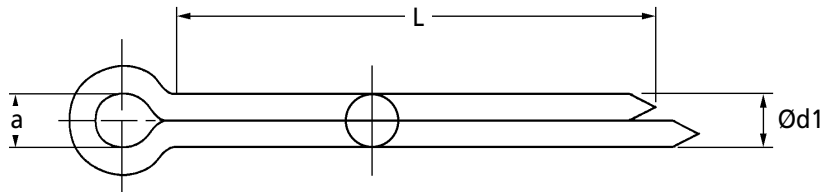
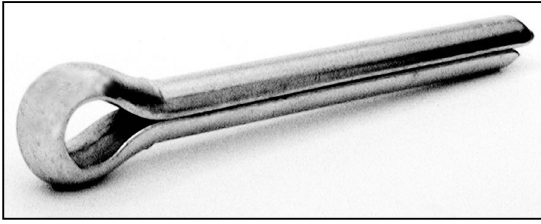


**SCP  
SCPS**

# MECHANICAL

## Split Cotter Pins

DIN 94 / ISO 1234 : To Suit 1 - 2mm Dia. Holes



**Steel Discounts:** 50+ -20% | 100+ -30% | 200+ -40% | 500+ -50% | 1000+ -60% | 2000+ -70%

**Stainless Discounts:** 50+ -5% | 100+ -10% | 200+ -15% | 500+ -20% | 1000+ -25% | 2000+ -30%

Part Number	Steel	Stainless	To Suit Hole Ø	Ød1 Min.	Ød1 Max.	a Min.	a Max.	L	Price Each 1 - 49	
									Steel	Stainless
SCP1.0-6	SCP1.0-6	1.0	0.80	0.90	0.80	1.60	6	£0.04	£P.O.A	
SCP1.0-8	SCP1.0-8	1.0	0.80	0.90	0.80	1.60	8	£0.04	£P.O.A	
SCP1.0-10	SCP1.0-10	1.0	0.80	0.90	0.80	1.60	12	£0.04	£P.O.A	
SCP1.0-12	SCP1.0-12	1.0	0.80	0.90	0.80	1.60	16	£0.05	£P.O.A	
SCP1.0-16	SCP1.0-16	1.0	0.80	0.90	0.80	1.60	18	£0.05	£P.O.A	
SCP1.0-18	SCP1.0-18	1.0	0.80	0.90	0.80	1.60	22	£0.05	£P.O.A	
SCP1.0-20	SCP1.0-20	1.0	0.80	0.90	0.80	1.60	25	£0.05	£P.O.A	
SCP1.0-22	SCP1.0-22	1.0	0.80	0.90	0.80	1.60	32	£0.05	£P.O.A	
SCP1.0-25	SCP1.0-25	1.0	0.80	0.90	0.80	1.60	36	£0.06	£P.O.A	
SCP1.0-28	SCP1.0-28	1.0	0.80	0.90	0.80	1.60	40	£0.07	£P.O.A	
SCP1.0-32	SCP1.0-32	1.0	0.80	0.90	0.80	1.60	45	£0.09	£P.O.A	
SCP1.0-36	-	1.0	0.80	0.90	0.80	1.60	50	£0.09	-	
SCP1.2-10	SCP1.2-10	1.2	1.09	1.00	1.25	2.50	10	£0.05	£0.11	
SCP1.2-12	SCP1.2-12	1.2	1.09	1.00	1.25	2.50	12	£0.05	£0.11	
SCP1.2-16	SCP1.2-16	1.2	1.09	1.00	1.25	2.50	16	£0.05	£0.11	
SCP1.2-18	SCP1.2-18	1.2	1.09	1.00	1.25	2.50	18	£P.O.A	£P.O.A	
SCP1.2-20	SCP1.2-20	1.2	1.09	1.00	1.25	2.50	20	£0.06	£0.14	
SCP1.2-22	SCP1.2-22	1.2	1.09	1.00	1.25	2.50	22	£0.06	£0.14	
SCP1.2-25	SCP1.2-25	1.2	1.09	1.00	1.25	2.50	25	£0.06	£0.14	
SCP1.2-28	SCP1.2-28	1.2	1.09	1.00	1.25	2.50	28	£0.07	£0.16	
SCP1.2-32	SCP1.2-32	1.2	1.09	1.00	1.25	2.50	32	£0.07	£P.O.A	
SCP1.2-36	-	1.2	1.09	1.00	1.25	2.50	36	£0.08	-	
SCP1.6-10	SCP1.6-10	1.6	1.30	1.40	1.25	2.50	10	£0.04	£0.09	
SCP1.6-12	SCP1.6-12	1.6	1.30	1.40	1.25	2.50	12	£0.04	£0.09	
SCP1.6-16	SCP1.6-16	1.6	1.30	1.40	1.25	2.50	16	£0.04	£0.09	
SCP1.6-18	SCP1.6-18	1.6	1.30	1.40	1.25	2.50	18	£0.05	£0.11	
SCP1.6-20	SCP1.6-20	1.6	1.30	1.40	1.25	2.50	20	£0.05	£0.11	
SCP1.6-22	SCP1.6-22	1.6	1.30	1.40	1.25	2.50	22	£0.05	£0.11	
SCP1.6-25	SCP1.6-25	1.6	1.30	1.40	1.25	2.50	25	£0.05	£0.11	
SCP1.6-28	SCP1.6-28	1.6	1.30	1.40	1.25	2.50	28	£0.06	£0.14	
SCP1.6-32	SCP1.6-32	1.6	1.30	1.40	1.25	2.50	32	£0.06	£0.14	
SCP1.6-36	-	1.6	1.30	1.40	1.25	2.50	36	£0.07	-	
SCP2.0-10	SCP2.0-10	2.0	1.70	1.80	1.25	2.50	10	£0.04	£0.09	
SCP2.0-12	SCP2.0-12	2.0	1.70	1.80	1.25	2.50	12	£0.04	£0.09	
SCP2.0-16	SCP2.0-16	2.0	1.70	1.80	1.25	2.50	16	£0.04	£0.09	
SCP2.0-18	SCP2.0-18	2.0	1.70	1.80	1.25	2.50	18	£0.04	£0.09	
SCP2.0-20	SCP2.0-20	2.0	1.70	1.80	1.25	2.50	20	£0.04	£0.09	
SCP2.0-22	SCP2.0-22	2.0	1.70	1.80	1.25	2.50	22	£0.04	£0.09	
SCP2.0-25	SCP2.0-25	2.0	1.70	1.80	1.25	2.50	25	£0.05	£0.11	
SCP2.0-28	SCP2.0-28	2.0	1.70	1.80	1.25	2.50	28	£0.05	£0.11	
SCP2.0-32	SCP2.0-32	2.0	1.70	1.80	1.25	2.50	32	£0.06	£0.14	
SCP2.0-36	SCP2.0-36	2.0	1.70	1.80	1.25	2.50	36	£0.06	£0.14	
SCP2.0-40	SCP2.0-40	2.0	1.70	1.80	1.25	2.50	40	£0.07	£0.16	
SCP2.0-45	SCP2.0-45	2.0	1.70	1.80	1.25	2.50	45	£0.08	£0.21	
SCP2.0-50	SCP2.0-50	2.0	1.70	1.80	1.25	2.50	50	£0.09	£0.26	

**Material** SCP Type: Low Carbon Steel SCPS Type: Stainless Steel A2 (WS 1.4301) SCP1.0 to SCP1.6, A4 SCP2.0 to SCP6.3

**Other Info.** Cotter pins are made to DIN94 and also equal to ISO1234 and BS1574. Steel Pins can be zinc plated or phosphate coated, but since such finishes cannot be applied to the inside faces of the pin, only stainless can be recommended where full corrosion resistance is needed.

+44 (0)1246 455500  
+44 (0)1246 455522

**ondrives**

sales@ondrives.com  
www.ondrives.com

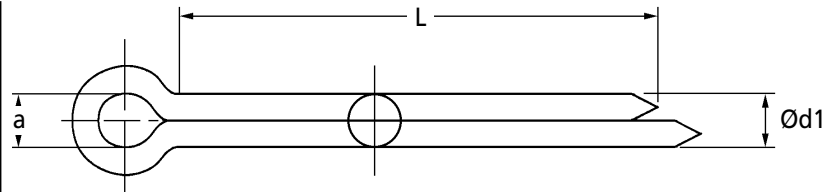
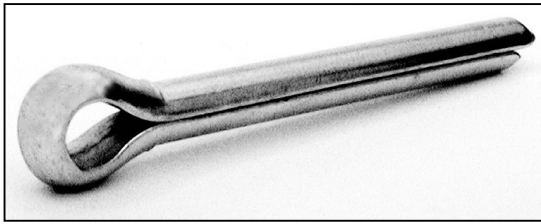
Product information updated 1st April 2011 and subject to change. Please contact Sales for the latest prices and availability.

# MECHANICAL

**SCP  
SCPS**

## Split Cotter Pins

DIN 94 / ISO 1234 : To Suit 2.5 - 4mm Dia. Holes



**Steel Discounts:** 50+ -20% | 100+ -30% | 200+ -40% | 500+ -50% | 1000+ -60% | 2000+ -70%

**Stainless Discounts:** 50+ -5% | 100+ -10% | 200+ -15% | 500+ -20% | 1000+ -25% | 2000+ -30%

Part Number	Steel	Stainless	To Suit Hole Ø	Ød1 Min.	Ød1 Max.	a Min.	a Max.	L	Price Each 1 - 49	
									Steel	Stainless
SCP2.5-10	SCP2.5-10	SCP2.5-10	2.5	2.10	2.30	1.25	2.50	10	£0.04	£0.09
SCP2.5-12	SCP2.5-12	SCP2.5-12	2.5	2.10	2.30	1.25	2.50	12	£0.04	£0.09
SCP2.5-16	SCP2.5-16	SCP2.5-16	2.5	2.10	2.30	1.25	2.50	16	£0.04	£0.09
SCP2.5-18	SCP2.5-18	SCP2.5-18	2.5	2.10	2.30	1.25	2.50	18	£0.04	£0.09
SCP2.5-20	SCP2.5-20	SCP2.5-20	2.5	2.10	2.30	1.25	2.50	20	£0.05	£0.11
SCP2.5-22	SCP2.5-22	SCP2.5-22	2.5	2.10	2.30	1.25	2.50	22	£0.05	£0.11
SCP2.5-25	SCP2.5-25	SCP2.5-25	2.5	2.10	2.30	1.25	2.50	25	£0.06	£0.14
SCP2.5-28	SCP2.5-28	SCP2.5-28	2.5	2.10	2.30	1.25	2.50	28	£0.06	£0.14
SCP2.5-32	SCP2.5-32	SCP2.5-32	2.5	2.10	2.30	1.25	2.50	32	£0.07	£0.16
SCP2.5-36	SCP2.5-36	SCP2.5-36	2.5	2.10	2.30	1.25	2.50	36	£0.07	£0.16
SCP2.5-40	SCP2.5-40	SCP2.5-40	2.5	2.10	2.30	1.25	2.50	40	£0.08	£0.21
SCP2.5-45	SCP2.5-45	SCP2.5-45	2.5	2.10	2.30	1.25	2.50	45	£0.08	£0.21
SCP2.5-50	SCP2.5-50	SCP2.5-50	2.5	2.10	2.30	1.25	2.50	50	£0.09	£0.26
SCP2.5-56	SCP2.5-56	SCP2.5-56	2.5	2.10	2.30	1.25	2.50	56	£0.09	£0.26
SCP2.5-63	SCP2.5-63	SCP2.5-63	2.5	2.10	2.30	1.25	2.50	63	£0.10	£0.28
SCP2.5-71	SCP2.5-71	SCP2.5-71	2.5	2.10	2.30	1.25	2.50	71	£0.11	£0.30
SCP3.2-16	SCP3.2-16	SCP3.2-16	3.2	2.70	2.90	1.60	3.20	16	£0.04	£0.09
SCP3.2-18	SCP3.2-18	SCP3.2-18	3.2	2.70	2.90	1.60	3.20	18	£0.04	£0.09
SCP3.2-20	SCP3.2-20	SCP3.2-20	3.2	2.70	2.90	1.60	3.20	20	£0.05	£0.11
SCP3.2-22	SCP3.2-22	SCP3.2-22	3.2	2.70	2.90	1.60	3.20	22	£0.05	£0.11
SCP3.2-25	SCP3.2-25	SCP3.2-25	3.2	2.70	2.90	1.60	3.20	25	£0.06	£0.14
SCP3.2-28	SCP3.2-28	SCP3.2-28	3.2	2.70	2.90	1.60	3.20	28	£0.06	£0.14
SCP3.2-32	SCP3.2-32	SCP3.2-32	3.2	2.70	2.90	1.60	3.20	32	£0.07	£0.16
SCP3.2-36	SCP3.2-36	SCP3.2-36	3.2	2.70	2.90	1.60	3.20	36	£0.07	£0.16
SCP3.2-40	SCP3.2-40	SCP3.2-40	3.2	2.70	2.90	1.60	3.20	40	£0.08	£0.21
SCP3.2-45	SCP3.2-45	SCP3.2-45	3.2	2.70	2.90	1.60	3.20	45	£0.08	£0.21
SCP3.2-50	SCP3.2-50	SCP3.2-50	3.2	2.70	2.90	1.60	3.20	50	£0.10	£0.28
SCP3.2-56	SCP3.2-56	SCP3.2-56	3.2	2.70	2.90	1.60	3.20	56	£0.11	£0.30
SCP3.2-63	SCP3.2-63	SCP3.2-63	3.2	2.70	2.90	1.60	3.20	63	£0.12	£0.33
SCP3.2-71	SCP3.2-71	SCP3.2-71	3.2	2.70	2.90	1.60	3.20	71	£0.13	£0.35
SCP4.0-16	SCP4.0-16	SCP4.0-16	4.0	3.50	3.70	2.00	4.00	16	£0.05	£0.11
SCP4.0-18	SCP4.0-18	SCP4.0-18	4.0	3.50	3.70	2.00	4.00	18	£0.06	£0.14
SCP4.0-20	SCP4.0-20	SCP4.0-20	4.0	3.50	3.70	2.00	4.00	20	£0.06	£0.14
SCP4.0-22	SCP4.0-22	SCP4.0-22	4.0	3.50	3.70	2.00	4.00	22	£0.07	£0.16
SCP4.0-25	SCP4.0-25	SCP4.0-25	4.0	3.50	3.70	2.00	4.00	25	£0.07	£0.16
SCP4.0-28	SCP4.0-28	SCP4.0-28	4.0	3.50	3.70	2.00	4.00	28	£0.08	£0.21
SCP4.0-32	SCP4.0-32	SCP4.0-32	4.0	3.50	3.70	2.00	4.00	32	£0.08	£0.21
SCP4.0-36	SCP4.0-36	SCP4.0-36	4.0	3.50	3.70	2.00	4.00	36	£0.08	£0.21
SCP4.0-40	SCP4.0-40	SCP4.0-40	4.0	3.50	3.70	2.00	4.00	40	£0.09	£0.26
SCP4.0-45	SCP4.0-45	SCP4.0-45	4.0	3.50	3.70	2.00	4.00	45	£0.10	£0.28
SCP4.0-50	SCP4.0-50	SCP4.0-50	4.0	3.50	3.70	2.00	4.00	50	£0.11	£0.30
SCP4.0-56	SCP4.0-56	SCP4.0-56	4.0	3.50	3.70	2.00	4.00	56	£0.11	£0.30
SCP4.0-63	SCP4.0-63	SCP4.0-63	4.0	3.50	3.70	2.00	4.00	63	£0.12	£0.33
SCP4.0-71	SCP4.0-71	SCP4.0-71	4.0	3.50	3.70	2.00	4.00	71	£0.12	£0.33
SCP4.0-80	SCP4.0-80	SCP4.0-80	4.0	3.50	3.70	2.00	4.00	80	£0.13	£0.35
SCP4.0-90	SCP4.0-90	SCP4.0-90	4.0	3.50	3.70	2.00	4.00	90	£0.14	£0.39
SCP4.0-100	SCP4.0-100	SCP4.0-100	4.0	3.50	3.70	2.00	4.00	100	£0.25	£0.56
SCP4.0-112	SCP4.0-112	SCP4.0-112	4.0	3.50	3.70	2.00	4.00	112	£0.28	£0.65
SCP4.0-125	SCP4.0-125	SCP4.0-125	4.0	3.50	3.70	2.00	4.00	125	£0.31	£0.74

+44 (0)1246 455500  
+44 (0)1246 455522

**ondrives**

sales@ondrives.com  
www.ondrives.com

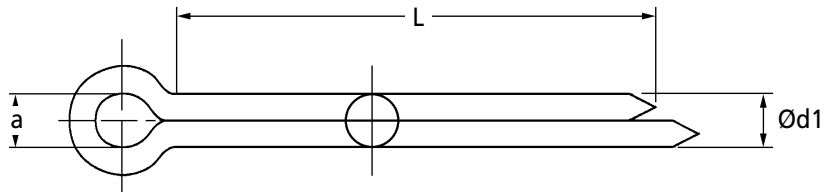
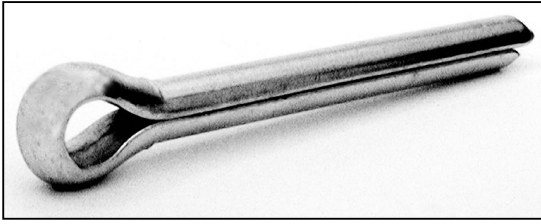
Product information updated 1st April 2011 and subject to change. Please contact Sales for the latest prices and availability.

**SCP  
SCPS**

# MECHANICAL

## Split Cotter Pins

DIN 94 / ISO 1234 : To Suit 5 - 6.3mm Dia. Holes



**Steel Discounts:** 50+ -20% | 100+ -30% | 200+ -40% | 500+ -50% | 1000+ -60% | 2000+ -70%

**Stainless Discounts:** 50+ -5% | 100+ -10% | 200+ -15% | 500+ -20% | 1000+ -25% | 2000+ -30%

Part Number	Steel	Stainless	To Suit Hole Ø	Ød1 Min.	Ød1 Max.	a Min.	a Max.	L	Price Each 1 - 49	
									Steel	Stainless
SCP5.0-16	SCP5.0-16	5.0	4.40	4.60	2.00	4.00	16	£0.06	£0.14	
SCP5.0-18	SCP5.0-18	5.0	4.40	4.60	2.00	4.00	18	£0.07	£0.16	
SCP5.0-20	SCP5.0-20	5.0	4.40	4.60	2.00	4.00	20	£0.08	£0.21	
SCP5.0-22	SCP5.0-22	5.0	4.40	4.60	2.00	4.00	22	£0.09	£0.26	
SCP5.0-25	SCP5.0-25	5.0	4.40	4.60	2.00	4.00	25	£0.10	£0.28	
SCP5.0-28	SCP5.0-28	5.0	4.40	4.60	2.00	4.00	28	£0.10	£0.28	
SCP5.0-32	SCP5.0-32	5.0	4.40	4.60	2.00	4.00	32	£0.11	£0.30	
SCP5.0-36	SCP5.0-36	5.0	4.40	4.60	2.00	4.00	36	£0.12	£0.33	
SCP5.0-40	SCP5.0-40	5.0	4.40	4.60	2.00	4.00	40	£0.12	£0.33	
SCP5.0-45	SCP5.0-45	5.0	4.40	4.60	2.00	4.00	45	£0.13	£0.35	
SCP5.0-50	SCP5.0-50	5.0	4.40	4.60	2.00	4.00	50	£0.13	£0.35	
SCP5.0-56	SCP5.0-56	5.0	4.40	4.60	2.00	4.00	56	£0.14	£0.39	
SCP5.0-63	SCP5.0-63	5.0	4.40	4.60	2.00	4.00	63	£0.15	£0.44	
SCP5.0-71	SCP5.0-71	5.0	4.40	4.60	2.00	4.00	71	£0.16	£0.46	
SCP5.0-80	SCP5.0-80	5.0	4.40	4.60	2.00	4.00	80	£0.21	£0.50	
SCP5.0-90	SCP5.0-90	5.0	4.40	4.60	2.00	4.00	90	£0.22	£0.53	
SCP5.0-100	SCP5.0-100	5.0	4.40	4.60	2.00	4.00	100	£0.31	£0.74	
SCP5.0-112	SCP5.0-112	5.0	4.40	4.60	2.00	4.00	112	£0.32	£0.78	
SCP5.0-125	SCP5.0-125	5.0	4.40	4.60	2.00	4.00	125	£0.35	£0.87	
SCP6.3-20	SCP6.3-20	6.3	5.70	5.90	2.00	4.00	20	£0.15	£0.44	
SCP6.3-22	SCP6.3-22	6.3	5.70	5.90	2.00	4.00	22	£0.15	£0.44	
SCP6.3-25	SCP6.3-25	6.3	5.70	5.90	2.00	4.00	25	£0.16	£0.46	
SCP6.3-28	SCP6.3-28	6.3	5.70	5.90	2.00	4.00	28	£0.16	£0.46	
SCP6.3-32	SCP6.3-32	6.3	5.70	5.90	2.00	4.00	32	£0.21	£0.50	
SCP6.3-36	SCP6.3-36	6.3	5.70	5.90	2.00	4.00	36	£0.22	£0.53	
SCP6.3-40	SCP6.3-40	6.3	5.70	5.90	2.00	4.00	40	£0.25	£0.56	
SCP6.3-45	SCP6.3-45	6.3	5.70	5.90	2.00	4.00	45	£0.28	£0.65	
SCP6.3-50	SCP6.3-50	6.3	5.70	5.90	2.00	4.00	50	£0.29	£0.67	
SCP6.3-56	SCP6.3-56	6.3	5.70	5.90	2.00	4.00	56	£0.30	£0.70	
SCP6.3-63	SCP6.3-63	6.3	5.70	5.90	2.00	4.00	63	£0.32	£0.78	
SCP6.3-71	SCP6.3-71	6.3	5.70	5.90	2.00	4.00	71	£0.33	£0.81	
SCP6.3-80	SCP6.3-80	6.3	5.70	5.90	2.00	4.00	80	£0.35	£0.87	
SCP6.3-90	SCP6.3-90	6.3	5.70	5.90	2.00	4.00	90	£0.40	£0.95	
SCP6.3-100	SCP6.3-100	6.3	5.70	5.90	2.00	4.00	100	£0.45	£1.03	
SCP6.3-112	SCP6.3-112	6.3	5.70	5.90	2.00	4.00	112	£0.46	£1.06	
SCP6.3-125	SCP6.3-125	6.3	5.70	5.90	2.00	4.00	125	£0.51	£1.14	
SCP6.3-140	SCP6.3-140	6.3	5.70	5.90	2.00	4.00	140	£0.53	£1.20	

### Material

SCP Type: Low Carbon Steel

SCPS Type: Stainless Steel A2 (WS 1.4301) SCPS1.0 to SCPS1.6, A4 SCPS2.0 to SCPS6.3

### Other Info.

Cotter pins are made to DIN94 and also equal to ISO1234 and BS1574.

Steel Pins can be zinc plated or phosphate coated, but since such finishes cannot be applied to the inside faces of the pin, only stainless can be recommended where full corrosion resistance is needed.

+44 (0)1246 455500

+44 (0)1246 455522

**ondrives**

sales@ondrives.com

www.ondrives.com

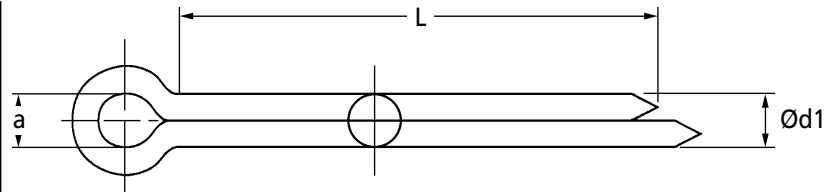
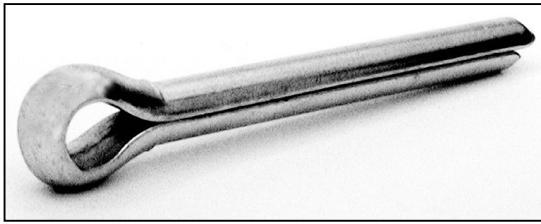
Product information updated 1st April 2011 and subject to change. Please contact Sales for the latest prices and availability.

# MECHANICAL

SCP

## Split Cotter Pins

DIN 94 / ISO 1234 : To Suit 8 - 12mm Dia. Holes



**Steel Discounts:** 50+ -20% 100+ -30% 200+ -40% 500+ -50% 1000+ -60% 2000+ -70%

Part Number Steel	To Suit Hole Ø	Ød1 Min.	Ød1 Max.	a Min.	a Max.	L	Price Each 1 - 49 Steel
SCP8.0-32	8.0	7.30	7.50	2.00	4.00	32	£0.32
SCP8.0-36	8.0	7.30	7.50	2.00	4.00	36	£0.34
SCP8.0-40	8.0	7.30	7.50	2.00	4.00	40	£0.37
SCP8.0-45	8.0	7.30	7.50	2.00	4.00	45	£0.45
SCP8.0-50	8.0	7.30	7.50	2.00	4.00	50	£0.48
SCP8.0-56	8.0	7.30	7.50	2.00	4.00	56	£0.51
SCP8.0-63	8.0	7.30	7.50	2.00	4.00	63	£0.53
SCP8.0-71	8.0	7.30	7.50	2.00	4.00	71	£0.56
SCP8.0-80	8.0	7.30	7.50	2.00	4.00	80	£0.59
SCP8.0-90	8.0	7.30	7.50	2.00	4.00	90	£0.61
SCP8.0-100	8.0	7.30	7.50	2.00	4.00	100	£0.67
SCP8.0-112	8.0	7.30	7.50	2.00	4.00	112	£0.74
SCP8.0-125	8.0	7.30	7.50	2.00	4.00	125	£0.79
SCP8.0-140	8.0	7.30	7.50	2.00	4.00	140	£0.84
SCP8.0-160	8.0	7.30	7.50	2.00	4.00	160	£0.93
SCP10.0-32	10.0	9.30	9.50	3.20	6.30	32	£0.46
SCP10.0-36	10.0	9.30	9.50	3.20	6.30	36	£0.50
SCP10.0-40	10.0	9.30	9.50	3.20	6.30	40	£0.53
SCP10.0-45	10.0	9.30	9.50	3.20	6.30	45	£0.58
SCP10.0-50	10.0	9.30	9.50	3.20	6.30	50	£0.64
SCP10.0-56	10.0	9.30	9.50	3.20	6.30	56	£0.69
SCP10.0-63	10.0	9.30	9.50	3.20	6.30	63	£0.72
SCP10.0-71	10.0	9.30	9.50	3.20	6.30	71	£0.88
SCP10.0-80	10.0	9.30	9.50	3.20	6.30	80	£0.98
SCP10.0-90	10.0	9.30	9.50	3.20	6.30	90	£0.99
SCP10.0-100	10.0	9.30	9.50	3.20	6.30	100	£1.07
SCP10.0-112	10.0	9.30	9.50	3.20	6.30	112	£1.20
SCP10.0-125	10.0	9.30	9.50	3.20	6.30	125	£1.30
SCP10.0-140	10.0	9.30	9.50	3.20	6.30	140	£1.41
SCP10.0-160	10.0	9.30	9.50	3.20	6.30	160	£1.47
SCP12.0-45	12.0	12.10	12.40	3.20	6.30	45	£0.68
SCP12.0-50	12.0	12.10	12.40	3.20	6.30	50	£0.76
SCP12.0-56	12.0	12.10	12.40	3.20	6.30	56	£0.85
SCP12.0-63	12.0	12.10	12.40	3.20	6.30	63	£0.98
SCP12.0-71	12.0	12.10	12.40	3.20	6.30	71	£1.09
SCP12.0-80	12.0	12.10	12.40	3.20	6.30	80	£1.23
SCP12.0-90	12.0	12.10	12.40	3.20	6.30	90	£1.35
SCP12.0-100	12.0	12.10	12.40	3.20	6.30	100	£1.55
SCP12.0-112	12.0	12.10	12.40	3.20	6.30	112	£1.66
SCP12.0-125	12.0	12.10	12.40	3.20	6.30	125	£1.85
SCP12.0-140	12.0	12.10	12.40	3.20	6.30	140	£2.07
SCP12.0-160	12.0	12.10	12.40	3.20	6.30	160	£2.12

### Material

SCP Type: Low Carbon Steel

### Other Info.

Cotter pins are made to DIN94 and also equal to ISO1234 and BS1574.

Steel Pins can be zinc plated or phosphate coated, but since such finishes cannot be applied to the inside faces of the pin, only stainless can be recommended where full corrosion resistance is needed.

+44 (0)1246 455500

+44 (0)1246 455522

**ondrives**

sales@ondrives.com

www.ondrives.com

Product information updated 1st April 2011 and subject to change. Please contact Sales for the latest prices and availability.