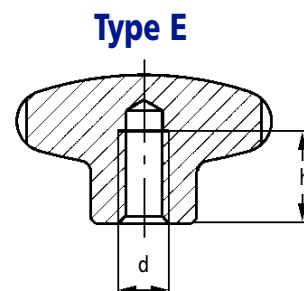
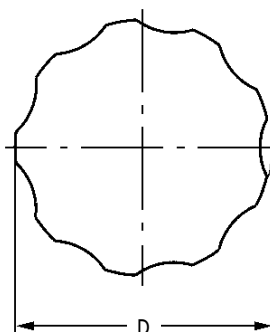
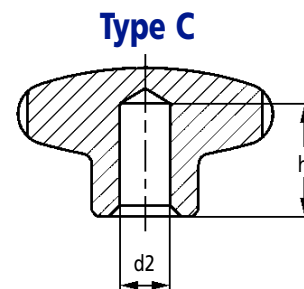
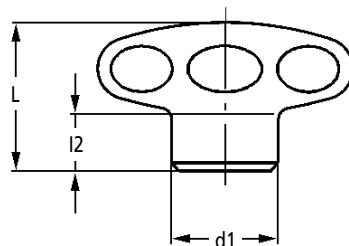
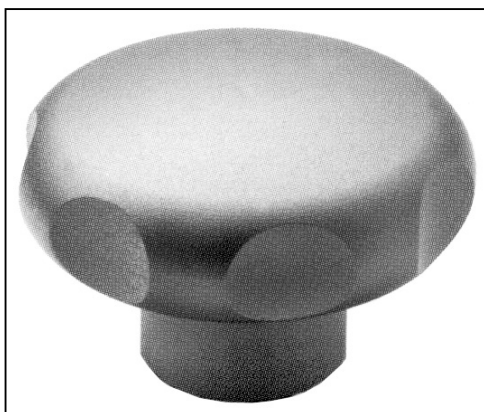


Lobe Knobs AISI 303 Stainless Steel



Discounts: 20+ -15% 40+ -20% 60+ -25% 100+ -30%

Part Number	Type	D	L	d1	l2	Mounting Hole			Weight g	Price Each 1 - 19
						d2 H7	d 6H	h		
GN.28601	C	40	26.5	18	11	8	-	12	125	£14.17
GN.28605	E	40	26.5	18	11	-	M6	12	128	£13.50
GN.28606	E	40	26.5	18	11	-	M8	15	125	£13.99
GN.28611	C	50	29.0	21	12	10	-	15	215	£20.11
GN.28615	E	50	29.0	21	12	-	M8	15	214	£19.90
GN.28616	E	50	29.0	21	12	-	M10	15	208	£20.11
GN.28621	C	60	33.0	25	12	12	-	18	375	£27.30
GN.28625	E	60	33.0	25	12	-	M10	18	367	£27.30
GN.28626	E	60	33.0	25	12	-	M12	22	365	£27.30

Material

AISI 303 sand-blasted **stainless steel**, with matte finish.

Hub: H7 tolerance plain blind hole (Type C) or with tapped blind hole (Type E).

Other Info.

On request and for sufficient quantities tapped hubs with through hole (Type D).

AISI 303 stainless steel and the complete lack of cavities make them particularly suitable for applications on machines and equipment in the food, chemical or pharmaceutical industry and wherever hygienic or environmental factors make it mandatory the use of corrosion-resistant materials.

Smooth surfaces and particularly wide connecting radii, guarantee a high degree of hygiene.

