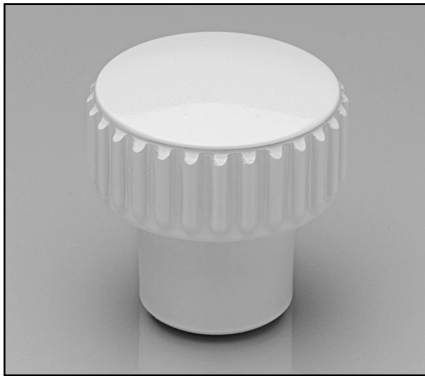
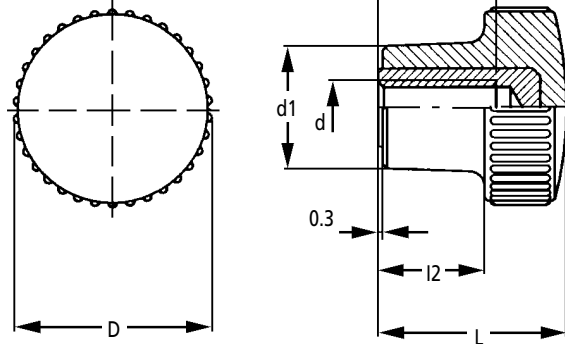


Clean Line Knurled & Plain Knobs

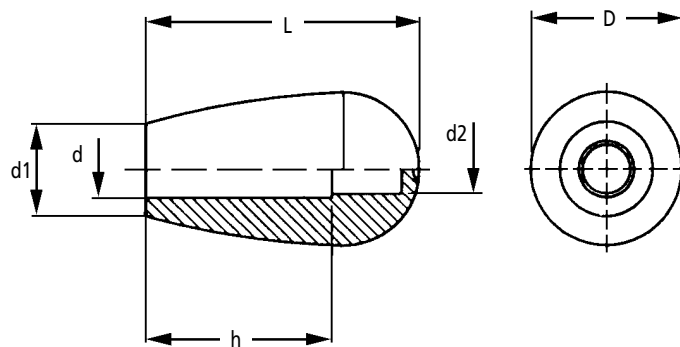
Stainless Steel Insert



Knurled Knobs



Plain Knobs



Discounts: 20+ -15% 40+ -20% 60+ -25% 100+ -30%

Part Number	L	D	d1	l2	Mounting Hole				Weight g	Price Each 1 - 19
					d	d 6H	d2	h		
KNURLED KNOBS										
151102	25	21	13	12	-	M6	-	12	11	£6.61
151112	28	26	16	15	-	M8	-	13	19	£7.42
151123	32	31	19	17	-	M10	-	17	29	£8.03
PLAIN KNOBS										
151202	25	15	12	-	6	-	4.0	17	4	£1.81
151212	32	20	14	-	8	-	6.0	21	7	£2.01
151222	42	26	17	-	10	-	7.5	30	14	£2.25

Material

Knurled Knobs: Painted Duroplast, in white similar to RAL 9002 with bright finish.

AISI 303 stainless steel insert with tapped through hole.

Plain Knobs: High impact strength special technopolymer, in white similar to RAL 9002 with bright finish.

Resistant to solvents, oils, greases and other chemical agents.

Other Info.

Knurled Knobs: Designed for application on medical and hospital equipment and on food processing machines whose parts must be frequently cleaned for hygienic reasons. Its shape is compact with no cavities, avoiding any unhealthy residue deposit. The metal insert is in AISI 303 stainless steel and can be used in sectors where corrosion resistant materials are required.

Plain Knobs: Push fitting on plain shaft made from standard h9 tolerance bright drawn stock bars. Elastic coupling – not affected by vibrations and does not tend to loosen.

Assembly instructions - carefully fit the knob onto slightly chamfered shaft end and push as far as possible by hand, then tap the handle with plastic or wooden mallet until firmly in place. With their white colour and bright finish, these have been designed for application on medical and hospital equipment or on food processing machines which must be frequently cleaned for hygienic reasons. Its shape is compact with no cavities, avoiding any unhealthy residue deposits.

