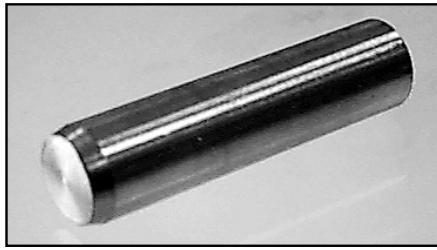


DP

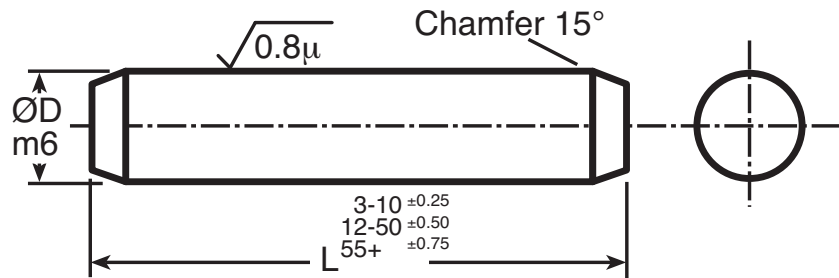
MECHANICAL

A2 Stainless Steel Dowel Pins

ISO 2338A : 1997, 0.8 - 5mm Dia.



Chamfered End



Discounts: 6+ -12% 20+ -25% 40+ -33% 60+ -37% 100+ -42% 200+ -48% 500+ -55% 1000+ -65%

Part Number	ØD m6	Length L	Double Shear Strength (kN)	Price Each 1 - 5	Part Number	ØD m6	Length L	Double Shear Strength (kN)	Price Each 1 - 5
DP0.8-4	0.8	4	0.4	£P.O.A	DP3.0-4	3	4	6.6	£0.19
DP0.8-5	0.8	5	0.4	£0.08	DP3.0-5	3	5	6.6	£0.21
DP0.8-6	0.8	6	0.4	£P.O.A	DP3.0-6	3	6	6.6	£0.21
DP0.8-8	0.8	8	0.4	£0.09	DP3.0-8	3	8	6.6	£0.88
DP0.8-10	0.8	10	0.4	£0.68	DP3.0-10	3	10	6.6	£0.25
DP0.8-12	0.8	12	0.4	£0.10	DP3.0-12	3	12	6.6	£0.27
DP1.0-4	1.0	4	0.7	£0.08	DP3.0-14	3	14	6.6	£0.28
DP1.0-5	1.0	5	0.7	£0.08	DP3.0-16	3	16	6.6	£0.29
DP1.0-6	1.0	6	0.7	£0.09	DP3.0-18	3	18	6.6	£0.30
DP1.0-8	1.0	8	0.7	£0.09	DP3.0-20	3	20	6.6	£0.32
DP1.0-10	1.0	10	0.7	£0.10	DP3.0-24	3	24	6.6	£0.37
DP1.0-12	1.0	12	0.7	£0.10	DP3.0-28	3	28	6.6	£0.46
DP1.5-4	1.5	4	1.7	£0.09	DP3.0-30	3	30	6.6	£0.51
DP1.5-5	1.5	5	1.7	£0.09	DP4.0-5	4	5	11.7	£0.27
DP1.5-6	1.5	6	1.7	£0.10	DP4.0-6	4	6	11.7	£0.28
DP1.5-8	1.5	8	1.7	£0.10	DP4.0-8	4	8	11.7	£0.30
DP1.5-10	1.5	10	1.7	£0.11	DP4.0-10	4	10	11.7	£0.32
DP1.5-12	1.5	12	1.7	£0.12	DP4.0-12	4	12	11.7	£0.35
DP1.5-14	1.5	14	1.7	£0.12	DP4.0-14	4	14	11.7	£0.43
DP1.5-16	1.5	16	1.7	£0.13	DP4.0-16	4	16	11.7	£0.45
DP2.0-4	2.0	4	2.9	£0.10	DP4.0-18	4	18	11.7	£0.48
DP2.0-5	2.0	5	2.9	£0.31	DP4.0-20	4	20	11.7	£0.55
DP2.0-6	2.0	6	2.9	£0.10	DP4.0-24	4	24	11.7	£0.59
DP2.0-8	2.0	8	2.9	£0.12	DP4.0-28	4	28	11.7	£0.63
DP2.0-10	2.0	10	2.9	£0.13	DP4.0-30	4	30	11.7	£0.68
DP2.0-12	2.0	12	2.9	£0.13	DP4.0-32	4	32	11.7	£0.72
DP2.0-14	2.0	14	2.9	£0.14	DP4.0-36	4	36	11.7	£0.89
DP2.0-16	2.0	16	2.9	£0.15	DP4.0-40	4	40	11.7	£0.95
DP2.0-18	2.0	18	2.9	£0.16	DP4.0-45	4	45	11.7	£1.17
DP2.0-20	2.0	20	2.9	£0.19	DP4.0-50	4	50	11.7	£1.42
DP2.0-24	2.0	24	2.9	£0.25	DP5.0-6	5	6	18.1	£0.44
DP2.5-4	2.5	4	4.4	£0.12	DP5.0-8	5	8	18.1	£1.23
DP2.5-5	2.5	5	4.4	£0.12	DP5.0-10	5	10	18.1	£0.45
DP2.5-6	2.5	6	4.4	£0.13	DP5.0-12	5	12	18.1	£0.51
DP2.5-8	2.5	8	4.4	£0.13	DP5.0-14	5	14	18.1	£0.53
DP2.5-10	2.5	10	4.4	£0.14	DP5.0-16	5	16	18.1	£0.56
DP2.5-12	2.5	12	4.4	£0.15	DP5.0-18	5	18	18.1	£0.59
DP2.5-14	2.5	14	4.4	£0.21	DP5.0-20	5	20	18.1	£0.63
DP2.5-16	2.5	16	4.4	£0.22	DP5.0-24	5	24	18.1	£0.68
DP2.5-18	2.5	18	4.4	£0.27	DP5.0-28	5	28	18.1	£0.76
DP2.5-20	2.5	20	4.4	£0.28	DP5.0-30	5	30	18.1	£0.87
DP2.5-24	2.5	24	4.4	£0.33	DP5.0-32	5	32	18.1	£0.93

+44 (0)1246 455500
+44 (0)1246 455522

ondrives

sales@ondrives.com
www.ondrives.com

Product information updated 1st April 2011 and subject to change. Please contact Sales for the latest prices and availability.

MECHANICAL

DP

A2 Stainless Steel Dowel Pins

ISO 2338A : 1997, 5 - 12mm Dia.

Discounts: 6+ -12% 20+ -25% 40+ -33% 60+ -37% 100+ -42% 200+ -48% 500+ -55% 1000+ -65%

Part Number	ØD m6	Length L	Double Shear Strength (kN)	Price Each 1 - 5	Part Number	ØD m6	Length L	Double Shear Strength (kN)	Price Each 1 - 5
DP5.0-36	5	36	18.1	£1.05	DP8.0-70	8	70	47.0	£3.87
DP5.0-40	5	40	18.1	£1.20	DP8.0-80	8	80	47.0	£4.83
DP5.0-45	5	45	18.1	£1.47	DP10.0-10	10	10	64.1	£1.93
DP5.0-50	5	50	18.1	£1.64	DP10.0-12	10	12	64.1	£2.01
DP5.0-55	5	55	18.1	£1.82	DP10.0-14	10	14	64.1	£2.11
DP5.0-60	5	60	18.1	£2.23	DP10.0-16	10	16	64.1	£2.24
DP6.0-6	6	6	26.0	£0.84	DP10.0-18	10	18	64.1	£2.33
DP6.0-8	6	8	26.0	£0.89	DP10.0-20	10	20	64.1	£2.42
DP6.0-10	6	10	26.0	£0.93	DP10.0-24	10	24	64.1	£2.65
DP6.0-12	6	12	26.0	£0.98	DP10.0-28	10	28	64.1	£3.01
DP6.0-14	6	14	26.0	£1.02	DP10.0-30	10	30	64.1	£3.22
DP6.0-16	6	16	26.0	£1.06	DP10.0-32	10	32	64.1	£3.31
DP6.0-18	6	18	26.0	£1.09	DP10.0-36	10	36	64.1	£3.59
DP6.0-20	6	20	26.0	£1.13	DP10.0-40	10	40	64.1	£3.83
DP6.0-24	6	24	26.0	£1.22	DP10.0-45	10	45	64.1	£4.16
DP6.0-28	6	28	26.0	£1.30	DP10.0-50	10	50	64.1	£4.33
DP6.0-30	6	30	26.0	£1.37	DP10.0-55	10	55	64.1	£4.50
DP6.0-32	6	32	26.0	£1.39	DP10.0-60	10	60	64.1	£4.67
DP6.0-36	6	36	26.0	£1.47	DP10.0-70	10	70	64.1	£5.79
DP6.0-40	6	40	26.0	£1.59	DP10.0-80	10	80	64.1	£6.61
DP6.0-45	6	45	26.0	£1.74	DP10.0-90	10	90	64.1	£7.95
DP6.0-50	6	50	26.0	£1.87	DP10.0-100	10	100	64.1	£8.73
DP6.0-55	6	55	26.0	£2.04	DP12.0-14	12	14	92.0	£3.10
DP6.0-60	6	60	26.0	£2.23	DP12.0-16	12	16	92.0	£3.30
DP8.0-8	8	8	47.0	£1.11	DP12.0-18	12	18	92.0	£3.55
DP8.0-10	8	10	47.0	£1.13	DP12.0-20	12	20	92.0	£3.83
DP8.0-12	8	12	47.0	£1.18	DP12.0-24	12	24	92.0	£3.97
DP8.0-14	8	14	47.0	£1.24	DP12.0-28	12	28	92.0	£4.32
DP8.0-16	8	16	47.0	£1.43	DP12.0-30	12	30	92.0	£4.48
DP8.0-18	8	18	47.0	£1.52	DP12.0-32	12	32	92.0	£5.07
DP8.0-20	8	20	47.0	£1.60	DP12.0-36	12	36	92.0	£5.51
DP8.0-24	8	24	47.0	£1.73	DP12.0-40	12	40	92.0	£6.55
DP8.0-28	8	28	47.0	£1.80	DP12.0-45	12	45	92.0	£7.29
DP8.0-30	8	30	47.0	£2.01	DP12.0-50	12	50	92.0	£8.30
DP8.0-32	8	32	47.0	£2.04	DP12.0-55	12	55	92.0	£9.04
DP8.0-36	8	36	47.0	£2.18	DP12.0-60	12	60	92.0	£9.47
DP8.0-40	8	40	47.0	£2.37	DP12.0-70	12	70	92.0	£10.17
DP8.0-45	8	45	47.0	£2.53	DP12.0-80	12	80	92.0	£11.97
DP8.0-50	8	50	47.0	£2.87	DP12.0-90	12	90	92.0	£12.96
DP8.0-55	8	55	47.0	£3.24	DP12.0-100	12	100	92.0	£16.23
DP8.0-60	8	60	47.0	£3.49					

Material

Stainless Steel Grade 1.4305 (similar to 303 / A2). The Dowels are made to ISO 2338A : 1997.

*Please note that some dowels will still be made to ISO 2338-1992 (to the manufacturer's preference).

Other Info.

The following gives general guidance on hole tolerances but there are graduations within each category:

Hole Material	Interference Fit	Transition Fit	Clearance Fit
Hardened Steel	PinØ less 05 µm	PinØ less 2 µm	PinØ plus 25-60 µm
Mild Steel	PinØ less 25 µm	PinØ less 5 µm	PinØ plus 25-60 µm
Aluminium/Zinc/Brass	PinØ less 35 µm	PinØ less 5 µm	PinØ plus 25-60 µm

When a dowel is interference-fitted into a blind hole it increases the pressure of the air trapped into the hole. It is strongly advised to specify that the dowel should have an air release flat ground along its full length to prevent the dowel being ejected under the pressure of compressed air, or bursting the component into which it is driven.

Specials available in Grade 1.4571 and h8 tolerance. Please ask for a quote. The length of the new ISO Standard design is the exact length.

The length of the old DIN 7 Standard design (still available on request) is measured between the domes.

+44 (0)1246 455500

+44 (0)1246 455522

ondrives

sales@ondrives.com

www.ondrives.com

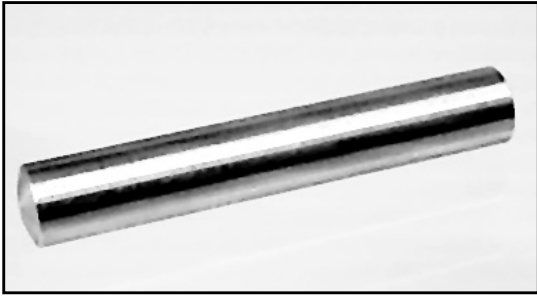
Product information updated 1st April 2011 and subject to change. Please contact Sales for the latest prices and availability.

DP-A4

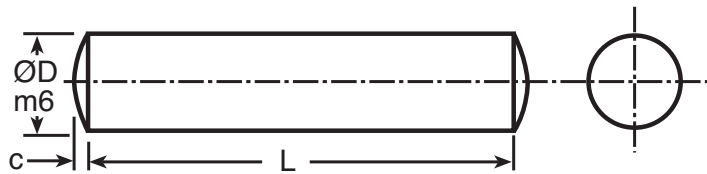
MECHANICAL

A4 Stainless Steel Dowel Pins

A4 - 316 Grade - DIN 7 : 1.5 - 8mm Dia.



Rounded End


Discounts: 6+ -5% 20+ -10% 40+ -15% 60+ -20% 100+ -25% 200+ -30% 500+ -35% 1000+ -40%

Part Number	ØD m6	C	Length L	Price Each 1 - 5	Part Number	ØD m6	C	Length L	Price Each 1 - 5
DP1.5-6/A4	1.5	0.23	6	£0.42	DP5.0-10/A4	5.0	0.75	10	£0.74
DP1.5-8/A4	1.5	0.23	8	£0.42	DP5.0-12/A4	5.0	0.75	12	£0.81
DP1.5-10/A4	1.5	0.23	10	£0.43	DP5.0-16/A4	5.0	0.75	16	£0.94
DP1.5-12/A4	1.5	0.23	12	£0.43	DP5.0-20/A4	5.0	0.75	20	£1.11
DP1.5-16/A4	1.5	0.23	16	£0.45	DP5.0-24/A4	5.0	0.75	24	£1.26
DP2.0-6/A4	2.0	0.30	6	£0.19	DP5.0-30/A4	5.0	0.75	30	£1.51
DP2.0-8/A4	2.0	0.30	8	£0.19	DP5.0-40/A4	5.0	0.75	40	£1.93
DP2.0-10/A4	2.0	0.30	10	£0.22	DP6.0-12/A4	6.0	0.90	12	£1.09
DP2.0-12/A4	2.0	0.30	12	£0.25	DP6.0-16/A4	6.0	0.90	16	£1.28
DP2.0-16/A4	2.0	0.30	16	£0.28	DP6.0-20/A4	6.0	0.90	20	£1.51
DP3.0-8/A4	3.0	0.45	8	£0.29	DP6.0-24/A4	6.0	0.90	24	£1.69
DP3.0-10/A4	3.0	0.45	10	£0.31	DP6.0-30/A4	6.0	0.90	30	£1.99
DP3.0-12/A4	3.0	0.45	12	£0.34	DP6.0-40/A4	6.0	0.90	40	£2.61
DP3.0-16/A4	3.0	0.45	16	£0.44	DP6.0-50/A4	6.0	0.90	50	£3.10
DP3.0-20/A4	3.0	0.45	20	£0.52	DP8.0-12/A4	8.0	1.20	12	£1.72
DP3.0-24/A4	3.0	0.45	24	£0.58	DP8.0-16/A4	8.0	1.20	16	£2.06
DP4.0-10/A4	4.0	0.60	10	£0.64	DP8.0-20/A4	8.0	1.20	20	£2.39
DP4.0-12/A4	4.0	0.60	12	£0.69	DP8.0-24/A4	8.0	1.20	24	£2.68
DP4.0-16/A4	4.0	0.60	16	£0.84	DP8.0-30/A4	8.0	1.20	30	£3.11
DP4.0-20/A4	4.0	0.60	20	£0.98	DP8.0-40/A4	8.0	1.20	40	£4.03
DP4.0-24/A4	4.0	0.60	24	£1.12	DP8.0-50/A4	8.0	1.20	50	£4.80
DP4.0-30/A4	4.0	0.60	30	£1.34					

Material

Stainless Steel A4 316 Grade (1.4401)
The Dowels are made to DIN 7

+44 (0)1246 455500
+44 (0)1246 455522

ondrives

sales@ondrives.com
www.ondrives.com

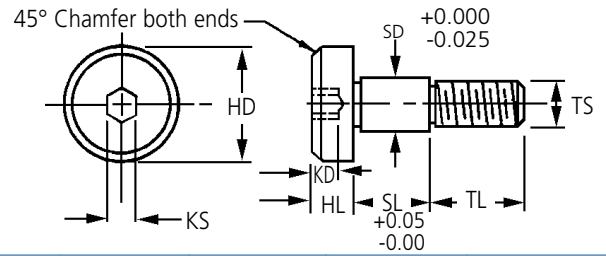
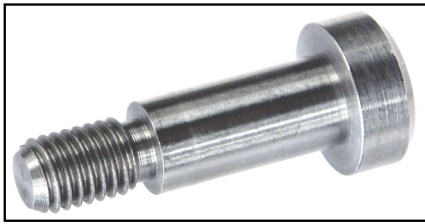
Product information updated 1st April 2011 and subject to change. Please contact Sales for the latest prices and availability.

MECHANICAL

**SHS
SHSS**

Precision Stainless Steel Shoulder Screws

303 & 416 Grade : M3 - M10



Discounts: 21+ -30% 51+ -40% 200+ -45% 500+ -50% 1000+ -55%

Part Number		SD	SL	HD	HL	TL	TS	KS	KD	Price Each 1 - 20	
303	416									303	416
SHS3-4	SHSS3-4	3.987	4.013	6	3	4	M3	2.00	1.60	£3.04	£7.15
SHS3-5	SHSS3-5	3.987	5.013	6	3	4	M3	2.00	1.60	£3.04	£7.15
SHS3-6	SHSS3-6	3.987	6.013	6	3	4	M3	2.00	1.60	£3.04	£7.15
SHS3-8	SHSS3-8	3.987	8.013	6	3	4	M3	2.00	1.60	£3.04	£7.15
SHS3-10	SHSS3-10	3.987	10.013	6	3	4	M3	2.00	1.60	£3.04	£7.15
SHS4-4	SHSS4-4	4.987	4.013	8	4	5	M4	2.50	2.00	£3.04	£7.15
SHS4-5	SHSS4-5	4.987	5.013	8	4	5	M4	2.50	2.00	£3.04	£7.15
SHS4-6	SHSS4-6	4.987	6.013	8	4	5	M4	2.50	2.00	£3.04	£7.15
SHS4-8	SHSS4-8	4.987	8.013	8	4	5	M4	2.50	2.00	£3.04	£7.15
SHS4-10	SHSS4-10	4.987	10.013	8	4	5	M4	2.50	2.00	£3.04	£7.15
SHS4-12	SHSS4-12	4.987	12.013	8	4	5	M4	2.50	2.00	£3.47	£8.16
SHS4-14	SHSS4-14	4.987	14.013	8	4	5	M4	2.50	2.00	£3.47	£8.16
SHS4-16	SHSS4-16	4.987	16.013	8	4	5	M4	2.50	2.00	£3.47	£8.16
SHS4-20	SHSS4-20	4.987	20.013	8	4	5	M4	2.50	2.00	£3.47	£8.16
SHS4-25	SHSS4-25	4.987	25.013	8	4	5	M4	2.50	2.00	£4.32	£8.82
SHS4-30	SHSS4-30	4.987	30.013	8	4	5	M4	2.50	2.00	£4.32	£8.82
SHS5-4	SHSS5-4	5.987	4.013	10	5	6	M5	3.00	2.40	£3.04	£7.15
SHS5-5	SHSS5-5	5.987	5.013	10	5	6	M5	3.00	2.40	£3.04	£7.15
SHS5-6	SHSS5-6	5.987	6.013	10	5	6	M5	3.00	2.40	£3.04	£7.15
SHS5-8	SHSS5-8	5.987	8.013	10	5	6	M5	3.00	2.40	£3.04	£7.15
SHS5-10	SHSS5-10	5.987	10.013	10	5	6	M5	3.00	2.40	£3.04	£7.15
SHS5-12	SHSS5-12	5.987	12.013	10	5	6	M5	3.00	2.40	£3.47	£8.16
SHS5-14	SHSS5-14	5.987	14.013	10	5	6	M5	3.00	2.40	£3.47	£8.16
SHS5-16	SHSS5-16	5.987	16.013	10	5	6	M5	3.00	2.40	£5.00	£8.16
SHS5-20	SHSS5-20	5.987	20.013	10	5	6	M5	3.00	2.40	£5.00	£8.82
SHS5-25	SHSS5-25	5.987	25.013	10	5	6	M5	3.00	2.40	£5.00	£8.82
SHS5-30	SHSS5-30	5.987	30.013	10	5	6	M5	3.00	2.40	£4.00	£8.82
SHS6-6	SHSS6-6	7.987	6.013	12	6	11	M6	4.00	3.20	£5.00	£8.82
SHS6-8	SHSS6-8	7.987	8.013	12	6	11	M6	4.00	3.20	£5.00	£8.82
SHS6-10	SHSS6-10	7.987	10.013	12	6	11	M6	4.00	3.20	£5.00	£8.82
SHS6-12	SHSS6-12	7.987	12.013	12	6	11	M6	4.00	3.20	£5.00	£8.82
SHS6-16	SHSS6-16	7.987	16.013	12	6	11	M6	4.00	3.20	£5.00	£8.82
SHS6-20	SHSS6-20	7.987	20.013	12	6	11	M6	4.00	3.20	£5.00	£8.82
SHS6-25	SHSS6-25	7.987	25.013	12	6	11	M6	4.00	3.20	£5.00	£8.82
SHS6-30	SHSS6-30	7.987	30.013	12	6	11	M6	4.00	3.20	£5.00	£8.82
SHS6.1-8	SHSS6.1-8	9.987	8.013	12	6	11	M6	4.00	3.20	£6.25	£11.53
SHS6.1-10	SHSS6.1-10	9.987	10.013	12	6	11	M6	4.00	3.20	£6.25	£11.53
SHS6.1-12	SHSS6.1-12	9.987	12.013	12	6	11	M6	4.00	3.20	£6.25	£11.53
SHS6.1-16	SHSS6.1-16	9.987	16.013	12	6	11	M6	4.00	3.20	£6.25	£11.53
SHS8-8	SHSS8-8	9.987	8.013	14	7	12	M8	5.00	4.00	£6.25	£11.53
SHS8-10	SHSS8-10	9.987	10.013	14	7	12	M8	5.00	4.00	£6.25	£11.53
SHS8-12	SHSS8-12	9.987	12.013	14	7	12	M8	5.00	4.00	£7.00	£13.33
SHS8-16	SHSS8-16	9.987	16.013	14	7	12	M8	5.00	4.00	£7.00	£13.33
SHS8-20	SHSS8-20	9.987	20.013	14	7	12	M8	5.00	4.00	£6.25	£13.33
SHS8-25	SHSS8-25	9.987	25.013	14	7	12	M8	5.00	4.00	£6.25	£13.33
SHS8-30	SHSS8-30	9.987	30.013	14	7	12	M8	5.00	4.00	£6.25	£13.33
SHS10-12	SHSS10-12	11.987	12.013	20	8	16	M10	6.00	4.80	£9.47	£17.54
SHS10-16	SHSS10-16	11.987	16.013	20	8	16	M10	6.00	4.80	£9.47	£17.54
SHS10-20	SHSS10-20	11.987	20.013	20	8	16	M10	6.00	4.80	£9.47	£17.54
SHS10-25	SHSS10-25	11.987	25.013	20	8	16	M10	6.00	4.80	£9.47	£17.54
SHS10-30	SHSS10-30	11.987	30.013	20	8	16	M10	6.00	4.80	£9.47	£13.39

Material

SHS: Stainless Steel Grade 303 18-8 (Tensile Strength 550+ N/mm²) SHSS: Hard 416 Stainless 26-32 HRC (Tensile Strength 850-1000 N/mm²)

SHST: Grade 5 Titanium 6AL-4V. P.O.A. Min order quantity 10 pieces (Tensile Strength 1100 N/mm²).

Also available with the head slotted or cross recessed.

+44 (0)1246 455500

+44 (0)1246 455522

ondrives

sales@ondrives.com

www.ondrives.com

Product information updated 1st April 2011 and subject to change. Please contact Sales for the latest prices and availability.

PP

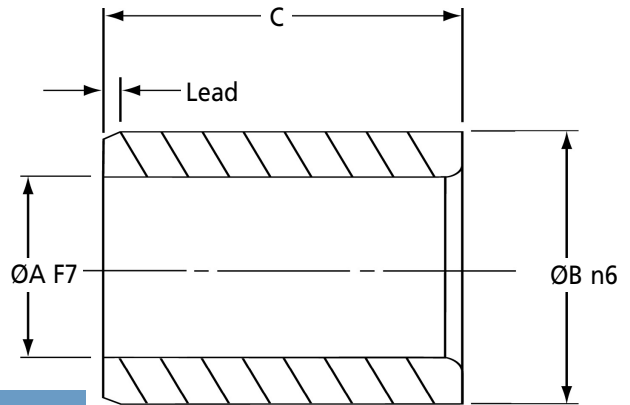
MECHANICAL

Plain Jig Bushes - Through Hardened Steel 62-64Rc

Headless Type Press Fit. BS 1098 Pt.2 1977 / ISO 4247 / DIN 179A

Material

535A99 (100Cr6) Through hardened Steel 62-64Rc.
 Ordering example: **PP4A** - 1.05
 Bore Size required
 for order and delivery



Standard Increment Bore Sizes

From 1.0mm to 3mm in steps of 0.05mm.
 From 3.0mm to 14mm in steps of 0.10mm.
 From 14.0mm to 33mm in steps of 0.25mm
 (and including all 0.25mm and 0.75mm sizes).
 From 33.0mm to 51mm in steps of 0.50mm.
 From 51.0mm to 100mm in steps of 1.00mm.

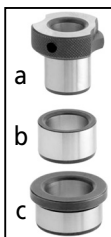
Nitrided bushes for longer life giving a hardness of 67-69 Rockwell C are available at extra cost.

Nominal Sizes		F7 Hole		n6 Shaft	
Over	Up to	High+	Low+	High+	Low+
-	3	16	6	10	4
3	6	22	10	16	8
6	10	28	13	19	10
10	18	34	16	23	12
18	30	41	20	28	15
30	50	50	25	33	17
50	80	60	30	39	20
80	120	71	36	45	23

Discounts: 10+ -4% 25+ -8% 50+ -10% 100+ -14%

Part Number	Short Series				Price Each 1 - 9	Part Number	Long Series				Price Each 1 - 9	Part Number	Extra Long Series				Price Each 1 - 9
	C	ØB n6	ØA F7 From	Up to			C	ØB n6	ØA F7 From	Up to			C	ØB n6	ØA F7 From	Up to	
PP3A	6	3	-	1.0	£18.14	PP3C	9	3	-	1.0	£20.47	-	-	-	-	-	
PP4A	6	4	1.05	1.8	£16.83	PP4C	9	4	1.05	1.8	£17.17	-	-	-	-	-	
PP5A	6	5	1.85	2.6	£11.28	PP5C	9	5	1.85	2.6	£12.28	-	-	-	-	-	
PP6B	8	6	2.65	3.3	£8.03	PP6E	12	6	2.65	3.3	£9.14	PP6F	16	6	2.65	3.3	£10.32
PP7B	8	7	3.40	4.0	£7.80	PP7E	12	7	3.40	4.0	£8.49	PP7F	16	7	3.40	4.0	£10.46
PP8B	8	8	4.10	5.0	£8.35	PP8E	12	8	4.10	5.0	£9.14	PP8F	16	8	4.10	5.0	£10.86
PP10D	10	10	5.10	6.0	£8.49	PP10F	16	10	5.10	6.0	£10.02	PP10H	20	10	5.10	6.0	£11.66
PP12D	10	12	6.10	8.0	£8.49	PP12F	16	12	6.10	8.0	£10.02	PP12H	20	12	6.10	8.0	£11.71
PP15E	12	15	8.10	10.0	£8.92	PP15H	20	15	8.10	10.0	£10.86	PP15J	25	15	8.10	10.0	£12.16
PP18E	12	18	10.10	12.0	£9.19	PP18H	20	18	10.10	12.0	£11.85	PP18J	25	18	10.10	12.0	£13.11
PP22F	16	22	12.10	15.0	£12.00	PP22K	28	22	12.10	15.0	£14.11	PP22N	36	22	12.10	15.0	£14.65
PP26F	16	26	15.25	18.0	£13.54	PP26K	28	26	15.25	18.0	£15.98	PP26N	36	26	15.25	18.0	£19.97
PP30H	20	30	18.25	22.0	£13.96	PP30N	36	30	18.25	22.0	£18.98	PP30R	45	30	18.25	22.0	£25.98
PP35H	20	35	22.25	26.0	£16.19	PP35N	36	35	22.25	26.0	£21.77	PP35R	45	35	22.25	26.0	£27.38
PP42J	25	42	26.25	30.0	£17.35	PP42R	45	42	26.25	30.0	£24.03	PP42S	56	42	26.25	30.0	£31.58
PP48J	25	48	30.25	35.0	£20.38	PP48R	45	48	30.25	35.0	£29.85	PP48S	56	48	30.25	35.0	£32.69
PP55L	30	55	35.50	42.0	£28.78	PP55S	56	55	35.50	42.0	£36.61	PP55T	67	55	35.50	42.0	£44.44
PP62L	30	62	42.50	48.0	£29.44	PP62S	56	62	42.50	48.0	£37.45	PP62T	67	62	42.50	48.0	£45.29
PP70L	30	70	48.50	55.0	£P.O.A	PP70S	56	70	48.50	55.0	£P.O.A	PP70T	67	70	48.50	55.0	£P.O.A
PP78M	35	78	56.00	63.0	£P.O.A	PP78T	67	78	56.00	63.0	£P.O.A	PP78W	78	78	56.00	63.0	£P.O.A
PP85M	35	85	64.00	70.0	£P.O.A	PP85T	67	85	64.00	70.0	£P.O.A	PP85W	78	85	64.00	70.0	£P.O.A
PP95P	40	95	71.00	78.0	£P.O.A	PP95W	78	95	71.00	78.0	£P.O.A	PP95Y	105	95	71.00	78.0	£P.O.A
PP105P	40	105	79.00	85.0	£P.O.A	PP105W	78	105	79.00	85.0	£P.O.A	PP105Y	105	105	79.00	85.0	£P.O.A
PP115R	45	115	86.00	95.0	£P.O.A	PP115X	89	115	86.00	95.0	£P.O.A	PP115Z	112	115	86.00	95.0	£P.O.A
PP125R	45	125	96.00	105.0	£P.O.A	PP125X	89	125	96.00	105.0	£P.O.A	PP125Z	112	125	96.00	105.0	£P.O.A

Minimum order value of £50 applies



Also Available

- (a) **Fixed & Slip Renewable:** These two features are incorporated on one bush, which is used in conjunction with liner bushes, and is held in place by a lock screw, tenon or stop pin. The bush is a slide fit in its corresponding liner. The removable fixed feature of the bush is normally used on high production work, when the bush can be easily and quickly replaced with a minimum loss of production. The removable slip feature of the bush is used when more than one operation is carried out, when the bush is instantly removable after each operation.
- (b) **Headless Liner Type:** This range is for use in conjunction with Renewable Fixed and Slip type bushes.
- (c) **Headed Liner Type:** As above but headed. The shallow head can be left standing proud or countersunk flush.

Imperial sizes for all types available.

+44 (0)1246 455500
 +44 (0)1246 455522

ondrives

sales@ondrives.com
 www.ondrives.com

Product information updated 1st April 2011 and subject to change. Please contact Sales for the latest prices and availability.

MECHANICAL

PH

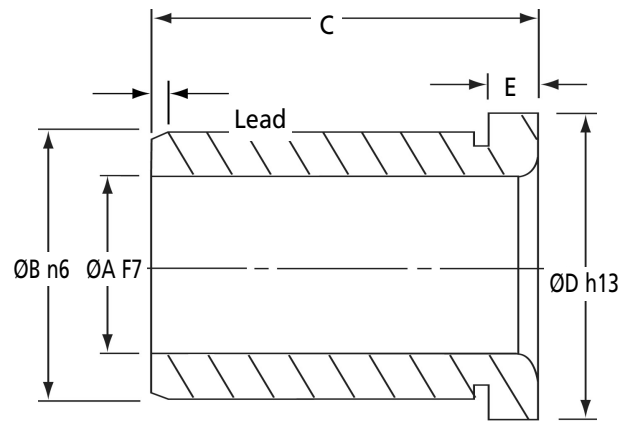
Headed Jig Bushes - Through Hardened Steel 62-64Rc

Headed Type Press Fit. BS 1098 Pt.2 1977 / ISO 4247 / DIN 172A



Material

535A99 (100Cr6) Through hardened Steel 62-64Rc.
Ordering example: PH18E - 12.0
Bore Size required
for order and delivery



Standard Increment Bore Sizes

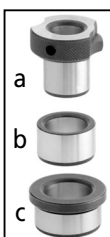
From 1.0mm to 3mm in steps of 0.05mm.
From 3.0mm to 14mm in steps of 0.10mm.
From 14.0mm to 33mm in steps of 0.25mm
(and including all 0.25mm and 0.75mm sizes).
From 33.0mm to 51mm in steps of 0.50mm.
From 51.0mm to 100mm in steps of 1.00mm.

Nitrided bushes for longer life giving a hardness of 67-69 Rockwell C are available at extra cost.

Nominal Sizes		F7 Hole		n6 Shaft		h13 Shaft	
Over	Up to	High+	Low+	High+	Low+	High	Low-
-	3	16	6	10	4	0	140
3	6	22	10	16	8	0	180
6	10	28	13	19	10	0	220
10	18	34	16	23	12	0	270
18	30	41	20	28	15	0	330
30	50	50	25	33	17	0	390
50	80	60	30	39	20	0	460
80	120	71	36	45	23	0	540

Discounts: 10+ -4% 25+ -8% 50+ -10% 100+ -14%

Short Series						Price Each		Long Series						Price Each		Extra Long Series						Price Each													
Part Number	C	ØB n6	ØD h13	E	ØA F7	From	Up to	Part Number	C	ØB n6	ØD h13	E	ØA F7	From	Up to	Part Number	C	ØB n6	ØD h13	E	ØA F7	From	Up to	Part Number	C	ØB n6	ØD h13	E	ØA F7	From	Up to				
PH3A	6	3	6	2.0	-	1.0	£23.24	PH3C	9	3	6	2.0	-	1.0	£24.44	-	-	-	-	-	-	-	-	-	-	-	-	-	-	-	-	-	-	-	
PH4A	6	4	7	2.0	1.05	1.8	£18.06	PH4C	9	4	7	2.0	1.05	1.8	£18.49	-	-	-	-	-	-	-	-	-	-	-	-	-	-	-	-	-	-	-	-
PH5A	6	5	8	2.0	1.85	2.6	£12.71	PH5C	9	5	8	2.0	1.85	2.6	£14.07	-	-	-	-	-	-	-	-	-	-	-	-	-	-	-	-	-	-	-	-
PH6B	8	6	9	2.5	2.65	3.3	£8.92	PH6E	12	6	9	2.5	2.65	3.3	£8.92	PH6F	16	6	9	2.5	2.65	3.3	£12.54												
PH7B	8	7	10	2.5	3.40	4.0	£8.98	PH7E	12	7	10	2.5	3.40	4.0	£9.49	PH7F	16	7	10	2.5	3.40	4.0	£12.41												
PH8B	8	8	11	2.5	4.10	5.0	£9.14	PH8E	12	8	11	2.5	4.10	5.0	£10.34	PH8F	16	8	11	2.5	4.10	5.0	£13.11												
PH10D	10	10	13	3.0	5.10	6.0	£10.34	PH10F	16	10	13	3.0	5.10	6.0	£13.28	PH10H	20	10	13	3.0	5.10	6.0	£13.96												
PH12D	10	12	15	3.0	6.10	8.0	£10.17	PH12F	16	12	15	3.0	6.10	8.0	£13.28	PH12H	20	12	15	3.0	6.10	8.0	£13.96												
PH15E	12	15	18	3.0	8.10	10.0	£11.01	PH15H	20	15	18	3.0	8.10	10.0	£13.40	PH15J	25	15	18	3.0	8.10	10.0	£14.51												
PH18E	12	18	22	4.0	10.10	12.0	£12.00	PH18H	20	18	22	4.0	10.10	12.0	£13.54	PH18J	25	18	22	4.0	10.10	12.0	£15.63												
PH22F	16	22	26	4.0	12.10	15.0	£14.20	PH22K	28	22	26	4.0	12.10	15.0	£16.40	PH22N	36	22	26	4.0	12.10	15.0	£17.59												
PH26F	16	26	30	4.0	15.25	18.0	£14.65	PH26K	28	26	30	4.0	15.25	18.0	£20.67	PH26N	36	26	30	4.0	15.25	18.0	£23.75												
PH30H	20	30	34	5.0	18.25	22.0	£17.59	PH30N	36	30	34	5.0	18.25	22.0	£25.18	PH30R	45	30	34	5.0	18.25	22.0	£31.86												
PH35H	20	35	39	5.0	22.25	26.0	£19.82	PH35N	36	35	39	5.0	22.25	26.0	£25.86	PH35R	45	35	39	5.0	22.25	26.0	£34.04												
PH42J	25	42	46	5.0	26.25	30.0	£24.03	PH42R	45	42	46	5.0	26.25	30.0	£33.03	PH42S	56	42	46	5.0	26.25	30.0	£37.81												
PH48J	25	48	52	5.0	30.25	35.0	£29.05	PH48R	45	48	52	5.0	30.25	35.0	£35.17	PH48S	56	48	52	5.0	30.25	35.0	£43.30												
PH55L	30	55	59	5.0	35.50	42.0	£34.63	PH55S	56	55	59	5.0	35.50	42.0	£42.59	PH55T	67	55	59	5.0	35.50	42.0	£55.25												
PH62L	30	62	66	6.0	42.50	48.0	£35.53	PH62S	56	62	66	6.0	42.50	48.0	£44.34	PH62T	67	62	66	6.0	42.50	48.0	£55.92												
PH70L	30	70	74	6.0	48.50	55.0	£P.O.A	PH70S	56	70	74	6.0	48.50	55.0	£P.O.A	PH70T	67	70	74	6.0	48.50	55.0	£P.O.A												
PH78M	35	78	82	6.0	56.00	63.0	£P.O.A	PH78T	67	78	82	6.0	56.00	63.0	£P.O.A	PH78W	78	78	82	6.0	56.00	63.0	£P.O.A												
PH85M	35	85	90	6.0	64.00	70.0	£P.O.A	PH85T	67	85	90	6.0	64.00	70.0	£P.O.A	PH85W	78	85	90	6.0	64.00	70.0	£P.O.A												
PH95P	40	95	100	6.0	71.00	78.0	£P.O.A	PH95W	78	95	100	6.0	71.00	78.0	£P.O.A	PH95Y	105	95	100	6.0	71.00	78.0	£P.O.A												
PH105P	40	105	110	6.0	79.00	85.0	£P.O.A	PH105W	78	105	110	6.0	79.00	85.0	£P.O.A	PH105Y	105	105	110	6.0	79.00	85.0	£P.O.A												
PH115R	45	115	120	6.0	86.00	95.0	£P.O.A	PH115X	89	115	120	6.0	86.00	95.0	£P.O.A	PH115Z	112	115	120	6.0	86.00	95.0	£P.O.A												
PH125R	45	125	130	6.0	96.00	105.0	£P.O.A	PH125X	89	125	130	6.0	96.00	105.0	£P.O.A	PH125Z	112	125	130	6.0	96.00	105.0	£P.O.A												



Also Available

- (a) **Fixed & Slip Renewable:** These two features are incorporated on one bush, which is used in conjunction with liner bushes, and is held in place by a lock screw, tenon or stop pin. The bush is a slide fit in its corresponding liner. The removable fixed feature of the bush is normally used on high production work, when the bush can be easily and quickly replaced with a minimum loss of production. The removable slip feature of the bush is used when more than one operation is carried out, when the bush is instantly removable after each operation.
- (b) **Headless Liner Type:** This range is for use in conjunction with Renewable Fixed and Slip type bushes.
- (c) **Headed Liner Type:** As above but headed. The shallow head can be left standing proud or countersunk flush.

Imperial sizes for all types available.

+44 (0)1246 455500
+44 (0)1246 455522

ondrives

sales@ondrives.com
www.ondrives.com

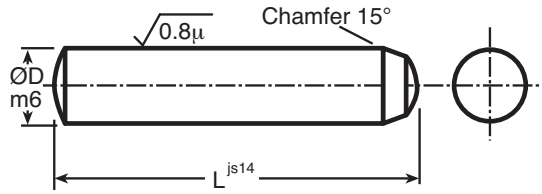
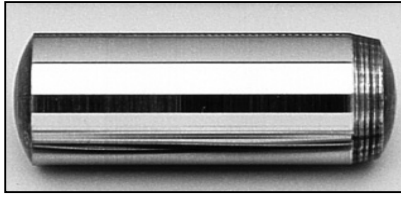
Product information updated 1st April 2011 and subject to change. Please contact Sales for the latest prices and availability.

DH

MECHANICAL

Hard Ground Steel Dowel Pins

ISO 8734, DIN 6325 : 1 - 6mm Dia.


Discounts: 6+ -12% 20+ -25% 40+ -33% 60+ -37% 100+ -42% 200+ -50% 500+ -55%

Part Number	ØD m6	Length L	Double Shear Strength (kN)	Price Each 1 - 5	Part Number	ØD m6	Length L	Double Shear Strength (kN)	Price Each 1 - 5
DH1-4	1.0	4	1.5	£0.15	DH3-18	3	18	13	£0.13
DH1-5	1.0	5	1.5	£0.15	DH3-20	3	20	13	£0.14
DH1-6	1.0	6	1.5	£0.15	DH3-22	3	22	13	£0.15
DH1-8	1.0	8	1.5	£0.16	DH3-24	3	24	13	£0.16
DH1-10	1.0	10	1.5	£0.16	DH3-26	3	26	13	£0.16
DH1-12	1.0	12	1.5	£0.16	DH3-28	3	28	13	£0.16
DH1.5-5	1.5	5	3.4	£0.13	DH3-30	3	30	13	£0.19
DH1.5-6	1.5	6	3.4	£0.13	DH3-32	3	32	13	£0.22
DH1.5-8	1.5	8	3.4	£0.14	DH3-36	3	36	13	£0.35
DH1.5-10	1.5	10	3.4	£0.14	DH3-40	3	40	13	£0.44
DH1.5-12	1.5	12	3.4	£0.14	DH3-45	3	45	13	£0.53
DH1.5-14	1.5	14	3.4	£0.15	DH3-50	3	50	13	£0.64
DH1.5-16	1.5	16	3.4	£0.15	DH3-55	3	55	13	£0.72
DH1.5-18	1.5	18	3.4	£0.15	DH3-60	3	60	13	£0.88
DH1.5-20	1.5	20	3.4	£0.31	DH4-6	4	6	22	£0.12
DH1.5-22	1.5	22	3.4	£0.33	DH4-8	4	8	22	£0.12
DH1.5-24	1.5	24	3.4	£0.46	DH4-10	4	10	22	£0.13
DH1.5-26	1.5	26	3.4	£0.52	DH4-12	4	12	22	£0.14
DH1.5-28	1.5	28	3.4	£0.61	DH4-14	4	14	22	£0.15
DH1.5-30	1.5	30	3.4	£0.64	DH4-16	4	16	22	£0.16
DH2-6	2.0	6	5.5	£0.13	DH4-18	4	18	22	£0.19
DH2-8	2.0	8	5.5	£0.13	DH4-20	4	20	22	£0.21
DH2-10	2.0	10	5.5	£0.14	DH4-22	4	22	22	£0.22
DH2-12	2.0	12	5.5	£0.14	DH4-24	4	24	22	£0.22
DH2-14	2.0	14	5.5	£0.14	DH4-26	4	26	22	£0.25
DH2-16	2.0	16	5.5	£0.15	DH4-28	4	28	22	£0.26
DH2-18	2.0	18	5.5	£0.15	DH4-30	4	30	22	£0.27
DH2-20	2.0	20	5.5	£0.15	DH4-32	4	32	22	£0.28
DH2-22	2.0	22	5.5	£0.19	DH4-36	4	36	22	£0.30
DH2-24	2.0	24	5.5	£0.31	DH4-40	4	40	22	£0.33
DH2-26	2.0	26	5.5	£0.39	DH4-45	4	45	22	£0.48
DH2-28	2.0	28	5.5	£0.46	DH4-50	4	50	22	£0.52
DH2-30	2.0	30	5.5	£0.52	DH4-55	4	55	22	£0.67
DH2-32	2.0	32	5.5	£0.58	DH4-60	4	60	22	£0.88
DH2-36	2.0	36	5.5	£0.64	DH5-6	5	6	31	£0.16
DH2-40	2.0	40	5.5	£0.70	DH5-8	5	8	31	£0.16
DH2.5-6	2.5	6	8.0	£0.11	DH5-10	5	10	31	£0.16
DH2.5-8	2.5	8	8.0	£0.13	DH5-12	5	12	31	£0.19
DH2.5-10	2.5	10	8.0	£0.13	DH5-14	5	14	31	£0.21
DH2.5-12	2.5	12	8.0	£0.14	DH5-16	5	16	31	£0.22
DH2.5-14	2.5	14	8.0	£0.14	DH5-18	5	18	31	£0.25
DH2.5-16	2.5	16	8.0	£0.15	DH5-20	5	20	31	£0.26
DH2.5-18	2.5	18	8.0	£0.15	DH5-22	5	22	31	£0.28
DH2.5-20	2.5	20	8.0	£0.19	DH5-24	5	24	31	£0.29
DH2.5-22	2.5	22	8.0	£0.19	DH5-25	5	25	31	£0.65
DH2.5-24	2.5	24	8.0	£0.19	DH5-26	5	26	31	£0.30
DH2.5-26	2.5	26	8.0	£0.31	DH5-28	5	28	31	£0.31
DH2.5-28	2.5	28	8.0	£0.33	DH5-30	5	30	31	£0.33
DH2.5-30	2.5	30	8.0	£0.37	DH5-32	5	32	31	£0.34
DH2.5-32	2.5	32	8.0	£0.44	DH5-36	5	36	31	£0.37
DH2.5-36	2.5	36	8.0	£0.53	DH5-40	5	40	31	£0.43
DH2.5-40	2.5	40	8.0	£0.61	DH5-45	5	45	31	£0.46
DH2.5-45	2.5	45	8.0	£0.67	DH5-50	5	50	31	£0.51
DH2.5-50	2.5	50	8.0	£0.74	DH5-55	5	55	31	£0.66
DH3-6	3.0	6	13.0	£0.11	DH5-60	5	60	31	£0.90
DH3-8	3.0	8	13.0	£0.11	DH5-70	5	70	31	£0.90
DH3-10	3.0	10	13.0	£0.11	DH6-10	6	10	31	£0.25
DH3-12	3.0	12	13.0	£0.12	DH6-12	6	12	31	£0.25
DH3-14	3.0	14	13.0	£0.13	DH6-14	6	14	31	£0.26
DH3-16	3.0	16	13.0	£0.13	DH6-16	6	16	31	£0.27

+44 (0)1246 455500
+44 (0)1246 455522

ondrives

sales@ondrives.com
www.ondrives.com

Product information updated 1st April 2011 and subject to change. Please contact Sales for the latest prices and availability.

MECHANICAL

DH

Hard Ground Steel Dowel Pins

ISO 8734, DIN 6325 : 6 - 20mm Dia.

Discounts: 6+ -12% 20+ -25% 40+ -33% 60+ -37% 100+ -42% 200+ -50% 500+ -55%

Part Number	ØD m6	Length L	Double Shear Strength (kN)	Price Each 1 - 5	Part Number	ØD m6	Length L	Double Shear Strength (kN)	Price Each 1 - 5
DH6-18	6	18	53	£0.29	DH12-26	12	26	210	£1.34
DH6-20	6	20	53	£0.31	DH12-28	12	28	210	£1.41
DH6-22	6	22	53	£0.33	DH12-30	12	30	210	£1.47
DH6-24	6	24	53	£0.34	DH12-32	12	32	210	£1.54
DH6-26	6	26	53	£0.35	DH12-36	12	36	210	£1.68
DH6-28	6	28	53	£0.39	DH12-40	12	40	210	£1.80
DH6-30	6	30	53	£0.43	DH12-45	12	45	210	£1.94
DH6-32	6	32	53	£0.44	DH12-50	12	50	210	£2.11
DH6-36	6	36	53	£0.50	DH12-55	12	55	210	£2.27
DH6-40	6	40	53	£0.53	DH12-60	12	60	210	£2.42
DH6-45	6	45	53	£0.59	DH12-70	12	70	210	£2.76
DH6-50	6	50	53	£0.65	DH12-80	12	80	210	£3.05
DH6-55	6	55	53	£0.69	DH12-90	12	90	210	£3.41
DH6-60	6	60	53	£0.76	DH12-100	12	100	210	£3.69
DH6-70	6	70	53	£1.33	DH12-110	12	110	210	£5.22
DH6-80	6	80	53	£1.99	DH12-120	12	120	210	£5.64
DH6-90	6	90	53	£2.27	DH14-24	14	24	260	£2.23
DH6-100	6	100	53	£2.49	DH14-26	14	26	260	£2.25
DH8-14	8	14	88	£0.51	DH14-28	14	28	260	£2.32
DH8-16	8	16	88	£0.51	DH14-30	14	30	260	£P.O.A
DH8-18	8	18	88	£0.51	DH14-32	14	32	260	£2.56
DH8-20	8	20	88	£0.53	DH14-36	14	36	260	£2.70
DH8-22	8	22	88	£0.58	DH14-40	14	40	260	£2.79
DH8-24	8	24	88	£0.61	DH14-45	14	45	260	£3.11
DH8-26	8	26	88	£0.64	DH14-50	14	50	260	£3.22
DH8-28	8	28	88	£0.66	DH14-55	14	55	260	£3.55
DH8-30	8	30	88	£0.69	DH14-60	14	60	260	£3.64
DH8-32	8	32	88	£0.72	DH14-70	14	70	260	£4.69
DH8-36	8	36	88	£0.81	DH14-80	14	80	260	£5.27
DH8-40	8	40	88	£0.87	DH14-90	14	90	260	£6.05
DH8-45	8	45	88	£0.94	DH14-100	14	100	260	£6.53
DH8-50	8	50	88	£1.03	DH14-110	14	110	260	£7.08
DH8-55	8	55	88	£1.11	DH14-120	14	120	260	£8.76
DH8-60	8	60	88	£1.18	DH16-24	16	24	350	£2.97
DH8-70	8	70	88	£1.35	DH16-26	16	26	350	£2.22
DH8-80	8	80	88	£2.04	DH16-28	16	28	350	£3.19
DH8-90	8	90	88	£2.43	DH16-30	16	30	350	£3.30
DH8-100	8	100	88	£2.78	DH16-32	16	32	350	£3.49
DH8-110	8	110	88	£3.01	DH16-36	16	36	350	£3.64
DH8-120	8	120	88	£3.24	DH16-40	16	40	350	£3.84
DH10-20	10	20	132	£0.82	DH16-45	16	45	350	£4.15
DH10-22	10	22	132	£0.87	DH16-50	16	50	350	£4.49
DH10-24	10	24	132	£0.90	DH16-55	16	55	350	£4.80
DH10-26	10	26	132	£0.95	DH16-60	16	60	350	£5.27
DH10-28	10	28	132	£1.00	DH16-70	16	70	350	£6.05
DH10-30	10	30	132	£1.05	DH16-80	16	80	350	£6.69
DH10-32	10	32	132	£1.14	DH16-90	16	90	350	£7.64
DH10-36	10	36	132	£1.18	DH16-100	16	100	350	£8.21
DH10-40	10	40	132	£1.26	DH16-110	16	110	350	£8.67
DH10-45	10	45	132	£1.40	DH16-120	16	120	350	£10.06
DH10-50	10	50	132	£1.51	DH20-40	20	40	485	£7.24
DH10-55	10	55	132	£1.62	DH20-45	20	45	485	£7.59
DH10-60	10	60	132	£1.72	DH20-50	20	50	485	£7.87
DH10-70	10	70	132	£1.97	DH20-55	20	55	485	£8.37
DH10-80	10	80	132	£2.39	DH20-60	20	60	485	£8.82
DH10-90	10	90	132	£3.25	DH20-70	20	70	485	£9.28
DH10-100	10	100	132	£3.57	DH20-80	20	80	485	£10.05
DH10-110	10	110	132	£4.21	DH20-90	20	90	485	£11.43
DH10-120	10	120	132	£4.58	DH20-100	20	100	485	£12.15
DH12-20	12	20	210	£1.33	DH20-110	20	110	485	£13.87
DH12-22	12	22	210	£1.33	DH20-120	20	120	485	£14.71
DH12-24	12	24	210	£1.33					

Material

Hard Ground Steel 100 Cr6 (WS 1.3505 to HV550-650) to 55-62 HRC. See DP dowels for hole tolerances.

Performance

The dowels are made to DIN 6325 (ISO 8734) and are stocked in m6 diameter tolerance which is functionally interchangeable with the Grade 1 tolerance of the corresponding British Standard. The product is in all cases through hardened to HRC 55-62 for maximum strength and toughness.

+44 (0)1246 455500

+44 (0)1246 455522

ondrives

sales@ondrives.com

www.ondrives.com

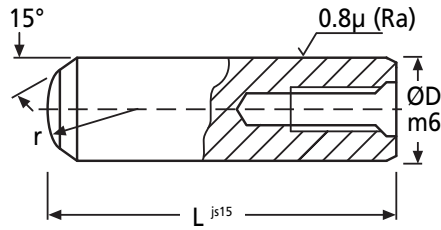
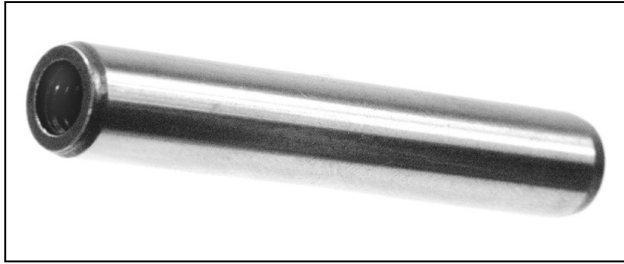
Product information updated 1st April 2011 and subject to change. Please contact Sales for the latest prices and availability.

DHX

MECHANICAL

Extractable Hard Ground Steel Dowel Pins

DIN 7979D : 4 - 10mm Dia.


Discounts: 6+ -12% 20+ -25% 40+ -33% 60+ -37% 100+ -42%

Part Number	ØD m6	Thread Size	L	Price Each 1 - 5	Part Number	ØD m6	Thread Size	L	Price Each 1 - 5
DHX4-10	4	M2.5	10	£3.83	DHX6-30	6	M4	30	£0.88
DHX4-12	4	M2.5	12	£3.83	DHX6-32	6	M4	32	£0.90
DHX4-14	4	M2.5	14	£3.83	DHX6-36	6	M4	36	£0.94
DHX4-16	4	M2.5	16	£3.89	DHX6-40	6	M4	40	£1.00
DHX4-20	4	M2.5	20	£3.93	DHX6-45	6	M4	45	£1.11
DHX4-24	4	M2.5	24	£4.00	DHX6-50	6	M4	50	£1.11
DHX4-28	4	M2.5	28	£4.20	DHX6-55	6	M4	55	£1.58
DHX4-30	4	M2.5	30	£4.24	DHX6-60	6	M4	60	£1.58
DHX4-32	4	M2.5	32	£4.33	DHX6-70	6	M4	70	£1.94
DHX4-36	4	M2.5	36	£4.37	DHX6-80	6	M4	80	£2.63
DHX4-40	4	M2.5	40	£4.50	DHX8-16	8	M5	16	£1.20
DHX4-50	4	M2.5	50	£4.74	DHX8-18	8	M5	18	£1.44
DHX5-10	5	M3	10	£1.42	DHX8-20	8	M5	20	£1.08
DHX5-12	5	M3	12	£1.49	DHX8-24	8	M5	24	£1.13
DHX5-14	5	M3	14	£1.58	DHX8-28	8	M5	28	£1.08
DHX5-16	5	M3	16	£1.59	DHX8-30	8	M5	30	£1.11
DHX5-18	5	M3	18	£1.60	DHX8-32	8	M5	32	£1.18
DHX5-20	5	M3	20	£1.61	DHX8-36	8	M5	36	£1.24
DHX5-24	5	M3	24	£1.66	DHX8-40	8	M5	40	£1.33
DHX5-28	5	M3	28	£1.72	DHX8-45	8	M5	45	£1.40
DHX5-30	5	M3	30	£1.78	DHX8-50	8	M5	50	£1.47
DHX5-32	5	M3	32	£1.83	DHX8-55	8	M5	55	£1.62
DHX5-36	5	M3	36	£1.87	DHX8-60	8	M5	60	£1.69
DHX5-40	5	M3	40	£1.92	DHX8-70	8	M5	70	£1.81
DHX5-45	5	M3	45	£1.92	DHX8-80	8	M5	80	£2.06
DHX5-50	5	M3	50	£2.80	DHX8-90	8	M5	90	£3.39
DHX6-12	6	M4	12	£1.34	DHX8-100	8	M5	100	£3.45
DHX6-14	6	M4	14	£1.34	DHX10-16	10	M6	16	£1.93
DHX6-16	6	M4	16	£1.07	DHX10-20	10	M6	20	£1.41
DHX6-18	6	M4	18	£1.07	DHX10-24	10	M6	24	£1.50
DHX6-20	6	M4	20	£0.78	DHX10-28	10	M6	28	£1.58
DHX6-24	6	M4	24	£0.84	DHX10-30	10	M6	30	£1.62
DHX6-28	6	M4	28	£0.89	DHX10-32	10	M6	32	£1.66

Material

Hard Ground Steel 100 Cr6 (WS 1.3505 to HV550-650) to 55-62 HRC.
m6 Dia. tolerance

Other Info.

Larger sizes of Dowels and Taper pins are available with threads to facilitate removal from blind holes.
Parallel dowels (DIN 7979) have an air release flat ground to the full length of the pin to overcome the problem of reduced retention in blind holes due to trapped air.

+44 (0)1246 455500
+44 (0)1246 455522

ondrives

sales@ondrives.com
www.ondrives.com

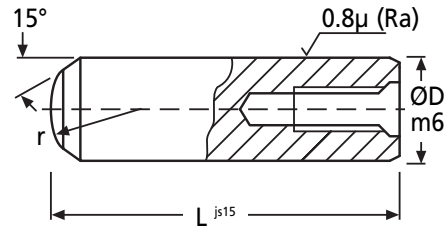
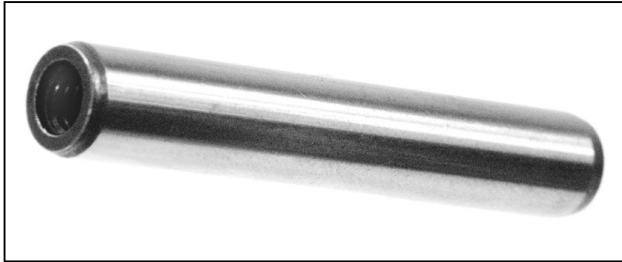
Product information updated 1st April 2011 and subject to change. Please contact Sales for the latest prices and availability.

MECHANICAL

Extractable Hard Ground Steel Dowel Pins

DIN 7979D : 10 - 20mm Dia.

DHX



Discounts: 6+ -12% 20+ -25% 40+ -33% 60+ -37% 100+ -42%

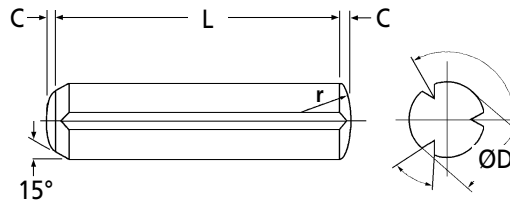
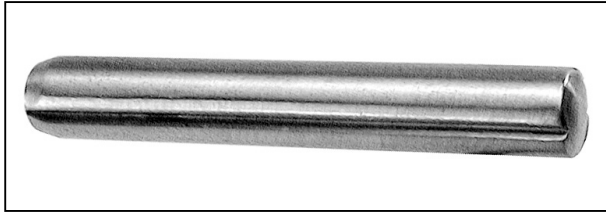
Part Number	ØD m6	Thread Size	L	Price Each 1 - 5	Part Number	ØD m6	Thread Size	L	Price Each 1 - 5
DHX10-36	10	M6	36	£1.51	DHX14-55	14	M8	55	£4.03
DHX10-40	10	M6	40	£1.54	DHX14-60	14	M8	60	£4.15
DHX10-45	10	M6	45	£1.64	DHX14-70	14	M8	70	£4.73
DHX10-50	10	M6	50	£1.81	DHX14-80	14	M8	80	£5.30
DHX10-55	10	M6	55	£1.94	DHX14-90	14	M8	90	£5.89
DHX10-60	10	M6	60	£2.00	DHX14-100	14	M8	100	£6.24
DHX10-70	10	M6	70	£2.24	DHX14-120	14	M8	120	£7.99
DHX10-80	10	M6	80	£2.98	DHX16-32	16	M8	32	£4.20
DHX10-90	10	M6	90	£3.74	DHX16-36	16	M8	36	£4.24
DHX10-100	10	M6	100	£3.97	DHX16-40	16	M8	40	£4.29
DHX10-120	10	M6	120	£4.72	DHX16-45	16	M8	45	£4.49
DHX12-20	12	M6	20	£2.12	DHX16-50	16	M8	50	£4.56
DHX12-24	12	M6	24	£2.14	DHX16-55	16	M8	55	£5.01
DHX12-28	12	M6	28	£2.16	DHX16-60	16	M8	60	£5.20
DHX12-30	12	M6	30	£2.18	DHX16-70	16	M8	70	£5.76
DHX12-32	12	M6	32	£2.27	DHX16-80	16	M8	80	£6.16
DHX12-36	12	M6	36	£2.41	DHX16-90	16	M8	90	£6.97
DHX12-40	12	M6	40	£2.52	DHX16-100	16	M8	100	£7.38
DHX12-45	12	M6	45	£2.65	DHX16-120	16	M8	120	£8.66
DHX12-50	12	M6	50	£2.84	DHX20-32	20	M10	32	£6.86
DHX12-55	12	M6	55	£3.03	DHX20-40	20	M10	40	£6.24
DHX12-60	12	M6	60	£3.13	DHX20-45	20	M10	45	£6.53
DHX12-70	12	M6	70	£3.45	DHX20-50	20	M10	50	£6.70
DHX12-80	12	M6	80	£3.76	DHX20-55	20	M10	55	£7.31
DHX12-90	12	M6	90	£4.42	DHX20-60	20	M10	60	£7.59
DHX12-100	12	M6	100	£4.88	DHX20-70	20	M10	70	£8.30
DHX12-120	12	M6	120	£6.51	DHX20-80	20	M10	80	£8.94
DHX14-28	14	M8	28	£3.07	DHX20-90	20	M10	90	£10.04
DHX14-32	14	M8	32	£3.22	DHX20-100	20	M10	100	£10.32
DHX14-36	14	M8	36	£3.26	DHX20-120	20	M10	120	£12.55
DHX14-40	14	M8	40	£3.41					
DHX14-45	14	M8	45	£3.57					
DHX14-50	14	M8	50	£3.60					

GRP

MECHANICAL

Mild Steel Full Length Grooved Pins

DIN 1473 (Type GP3) : 1 - 4mm Dia.


Discounts: 6+ -10% 20+ -25% 40+ -30% 60+ -35% 100+ -40% 200+ -45% 500+ -50%

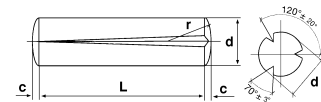
Part Number	ØD	C	L	Price Each 1 - 5	Part Number	ØD	C	L	Price Each 1 - 5
GRP1-4	1.0	0.14	4	£P.O.A	GRP2.5-6	2.5	0.30	6	£0.13
GRP1-5	1.0	0.14	5	£P.O.A	GRP2.5-8	2.5	0.30	8	£0.13
GRP1-6	1.0	0.14	6	£P.O.A	GRP2.5-10	2.5	0.30	10	£0.13
GRP1-8	1.0	0.14	8	£P.O.A	GRP2.5-12	2.5	0.30	12	£0.13
GRP1-10	1.0	0.14	10	£P.O.A	GRP2.5-14	2.5	0.30	14	£0.13
GRP1.2-4	1.2	0.16	4	£P.O.A	GRP2.5-16	2.5	0.30	16	£0.13
GRP1.2-5	1.2	0.16	5	£P.O.A	GRP2.5-18	2.5	0.30	18	£0.13
GRP1.2-6	1.2	0.16	6	£P.O.A	GRP2.5-20	2.5	0.30	20	£0.15
GRP1.2-8	1.2	0.16	8	£P.O.A	GRP2.5-22	2.5	0.30	22	£0.15
GRP1.2-10	1.2	0.16	10	£P.O.A	GRP2.5-24	2.5	0.30	24	£0.15
GRP1.5-4	1.5	0.20	4	£0.10	GRP2.5-26	2.5	0.30	26	£0.15
GRP1.5-5	1.5	0.20	5	£0.10	GRP2.5-28	2.5	0.30	28	£0.15
GRP1.5-6	1.5	0.20	6	£0.10	GRP2.5-30	2.5	0.30	30	£0.15
GRP1.5-8	1.5	0.20	8	£0.10	GRP3-6	3.0	0.40	6	£0.13
GRP1.5-10	1.5	0.20	10	£0.10	GRP3-8	3.0	0.40	8	£0.13
GRP1.5-12	1.5	0.20	12	£0.10	GRP3-10	3.0	0.40	10	£0.13
GRP1.5-14	1.5	0.20	14	£0.10	GRP3-12	3.0	0.40	12	£0.13
GRP1.5-16	1.5	0.20	16	£0.10	GRP3-14	3.0	0.40	14	£0.15
GRP1.5-18	1.5	0.20	18	£0.10	GRP3-16	3.0	0.40	16	£0.15
GRP1.5-20	1.5	0.20	20	£0.10	GRP3-18	3.0	0.40	18	£0.15
GRP2-4	2.0	0.25	4	£0.10	GRP3-20	3.0	0.40	20	£0.15
GRP2-5	2.0	0.25	5	£0.10	GRP3-22	3.0	0.40	22	£0.15
GRP2-6	2.0	0.25	6	£0.10	GRP3-24	3.0	0.40	24	£0.15
GRP2-8	2.0	0.25	8	£0.10	GRP3-26	3.0	0.40	26	£0.15
GRP2-10	2.0	0.25	10	£0.10	GRP3-28	3.0	0.40	28	£0.15
GRP2-12	2.0	0.25	12	£0.13	GRP3-30	3.0	0.40	30	£0.15
GRP2-14	2.0	0.25	14	£0.13	GRP4-6	4.0	0.50	6	£0.15
GRP2-16	2.0	0.25	16	£0.13	GRP4-8	4.0	0.50	8	£0.15
GRP2-18	2.0	0.25	18	£0.13	GRP4-10	4.0	0.50	10	£0.15
GRP2-20	2.0	0.25	20	£0.13	GRP4-12	4.0	0.50	12	£0.15
GRP2-22	2.0	0.25	22	£0.13	GRP4-14	4.0	0.50	14	£0.15
GRP2-24	2.0	0.25	24	£0.15	GRP4-16	4.0	0.50	16	£0.15
GRP2-26	2.0	0.25	26	£0.15	GRP4-18	4.0	0.50	18	£0.15
GRP2-28	2.0	0.25	28	£0.15	GRP4-20	4.0	0.50	20	£0.18
GRP2-30	2.0	0.25	30	£0.15	GRP4-22	4.0	0.50	22	£0.18

Material

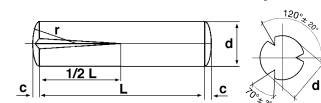
Mild Steel
DIN 1473 (GP3) in dias. 1 to 16mm

Other options available (1.5-8mm)

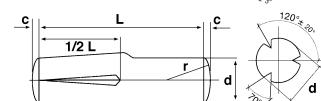
GP1 DIN 1471



GP2 DIN 1472



GP4 DIN 1474



Other Info.

Grooved pins offer an economic method of fastening without the need for precision drilled and reamed holes. Recommended hole tolerance is H11. The domes at each end are not included in the nominal length, i.e. the total length is longer than the nominal length.

 +44 (0)1246 455500
 +44 (0)1246 455522

 sales@ondrives.com
 www.ondrives.com

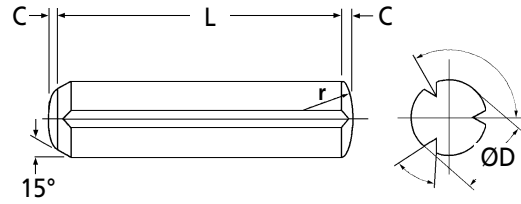
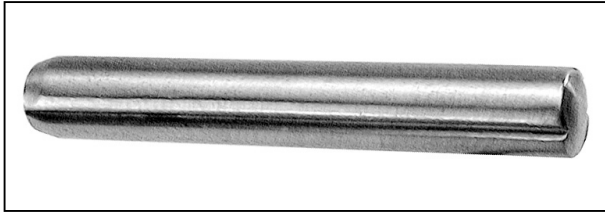
Product information updated 1st April 2011 and subject to change. Please contact Sales for the latest prices and availability.

MECHANICAL

GRP

Mild Steel Full Length Grooved Pins

DIN 1473 (Type GP3) : 4 - 8mm Dia.



Discounts: 6+ -10% 20+ -25% 40+ -30% 60+ -35% 100+ -40% 200+ -45% 500+ -50%

Part Number	ØD	C	L	Price Each 1 - 5	Part Number	ØD	C	L	Price Each 1 - 5
GRP4-24	4	0.50	24	£0.18	GRP6-26	6	0.80	26	£0.32
GRP4-26	4	0.50	26	£0.18	GRP6-28	6	0.80	28	£0.32
GRP4-28	4	0.50	28	£0.18	GRP6-30	6	0.80	30	£0.32
GRP4-30	4	0.50	30	£0.18	GRP6-32	6	0.80	32	£0.32
GRP4-32	4	0.50	32	£0.24	GRP6-36	6	0.80	36	£0.35
GRP4-40	4	0.50	40	£0.22	GRP6-40	6	0.80	40	£0.38
GRP4-45	4	0.50	45	£0.24	GRP6-45	6	0.80	45	£0.40
GRP4-50	4	0.50	50	£0.24	GRP6-50	6	0.80	50	£0.44
GRP5-8	5	0.60	8	£0.22	GRP6-55	6	0.80	55	£0.49
GRP5-10	5	0.60	10	£0.22	GRP6-60	6	0.80	60	£0.52
GRP5-12	5	0.60	12	£0.22	GRP8-10	8	1.00	10	£0.44
GRP5-14	5	0.60	14	£0.22	GRP8-12	8	1.00	12	£0.49
GRP5-16	5	0.60	16	£0.22	GRP8-14	8	1.00	14	£0.49
GRP5-18	5	0.60	18	£0.22	GRP8-16	8	1.00	16	£0.49
GRP5-20	5	0.60	20	£0.22	GRP8-18	8	1.00	18	£0.49
GRP5-22	5	0.60	22	£0.22	GRP8-20	8	1.00	20	£0.49
GRP5-24	5	0.60	24	£0.22	GRP8-22	8	1.00	22	£0.52
GRP5-26	5	0.60	26	£0.24	GRP8-24	8	1.00	24	£0.52
GRP5-28	5	0.60	28	£0.24	GRP8-26	8	1.00	26	£0.52
GRP5-30	5	0.60	30	£0.24	GRP8-28	8	1.00	28	£0.52
GRP5-32	5	0.60	32	£0.24	GRP8-30	8	1.00	30	£0.52
GRP5-36	5	0.60	36	£0.27	GRP8-32	8	1.00	32	£0.55
GRP5-40	5	0.60	40	£0.27	GRP8-36	8	1.00	36	£0.63
GRP5-45	5	0.60	45	£0.30	GRP8-40	8	1.00	40	£0.69
GRP5-50	5	0.60	50	£0.32	GRP8-45	8	1.00	45	£0.74
GRP6-8	6	0.80	8	£0.30	GRP8-50	8	1.00	50	£0.79
GRP6-10	6	0.80	10	£0.30	GRP8-55	8	1.00	55	£0.82
GRP6-12	6	0.80	12	£0.30	GRP8-60	8	1.00	60	£0.86
GRP6-14	6	0.80	14	£0.30	GRP8-65	8	1.00	65	£0.94
GRP6-16	6	0.80	16	£0.30	GRP8-70	8	1.00	70	£1.08
GRP6-18	6	0.80	18	£0.30					
GRP6-20	6	0.80	20	£0.30					
GRP6-22	6	0.80	22	£0.30					
GRP6-24	6	0.80	24	£0.32					

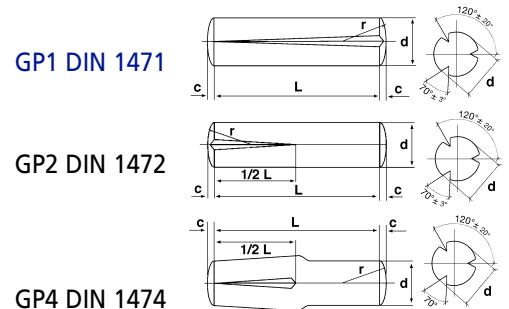
Material

Mild Steel
DIN 1473 (GP3) in dias. 1 to 16mm

Other options available (1.5-8mm)

Other Info.

Grooved pins offer an economic method of fastening without the need for precision drilled and reamed holes. Recommended hole tolerance is H11. The domes at each end are not included in the nominal length, i.e. the total length is longer than the nominal length.



+44 (0)1246 455500
+44 (0)1246 455522

ondrives

sales@ondrives.com
www.ondrives.com

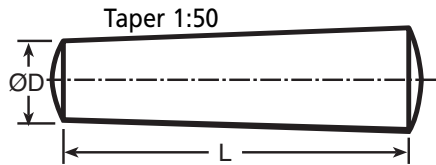
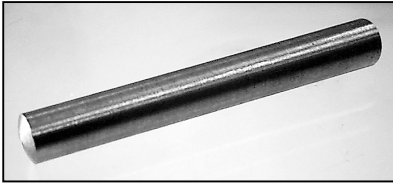
Product information updated 1st April 2011 and subject to change. Please contact Sales for the latest prices and availability.

TP

MECHANICAL

Mild Steel Taper Pins

1.5 - 12mm Dia.


Discounts: 6+ -12% 20+ -25% 40+ -33% 60+ -37% 100+ -42%

Part Number	ØD	L	Price Each 1 - 5	Part Number	ØD	L	Price Each 1 - 5	Part Number	ØD	L	Price Each 1 - 5
TP1.5-6	1.5	6	£0.07	TP4-16	4	16	£0.12	TP8-20	8	20	£0.30
TP1.5-8	1.5	8	£0.07	TP4-18	4	18	£0.12	TP8-22	8	22	£0.33
TP1.5-10	1.5	10	£0.08	TP4-20	4	20	£0.13	TP8-24	8	24	£0.35
TP1.5-14	1.5	14	£0.09	TP4-22	4	22	£0.15	TP8-28	8	28	£0.52
TP1.5-16	1.5	16	£0.09	TP4-24	4	24	£0.15	TP8-30	8	30	£0.53
TP1.5-18	1.5	18	£0.10	TP4-28	4	28	£0.16	TP8-32	8	32	£0.53
TP1.5-20	1.5	20	£0.10	TP4-30	4	30	£0.19	TP8-36	8	36	£0.55
TP2-6	2.0	6	£0.07	TP4-32	4	32	£0.19	TP8-40	8	40	£0.55
TP2-8	2.0	8	£0.08	TP4-36	4	36	£0.22	TP8-45	8	45	£0.59
TP2-10	2.0	10	£0.08	TP4-40	4	40	£0.25	TP8-50	8	50	£0.69
TP2-12	2.0	12	£0.09	TP5-10	5	10	£0.11	TP8-55	8	55	£0.87
TP2-14	2.0	14	£0.09	TP5-12	5	12	£0.11	TP8-60	8	60	£0.89
TP2-16	2.0	16	£0.10	TP5-14	5	14	£0.12	TP8-65	8	65	£1.12
TP2-18	2.0	18	£0.10	TP5-16	5	16	£0.12	TP8-70	8	70	£1.13
TP2-20	2.0	20	£0.10	TP5-18	5	18	£0.13	TP8-80	8	80	£1.20
TP2-22	2.0	22	£0.11	TP5-20	5	20	£0.14	TP10-28	10	28	£0.78
TP2-24	2.0	24	£0.12	TP5-22	5	22	£0.15	TP10-30	10	30	£0.78
TP2.5-6	2.5	6	£0.08	TP5-24	5	24	£0.16	TP10-32	10	32	£0.80
TP2.5-8	2.5	8	£0.09	TP5-28	5	28	£0.21	TP10-36	10	36	£0.93
TP2.5-10	2.5	10	£0.09	TP5-30	5	30	£0.22	TP10-40	10	40	£1.00
TP2.5-12	2.5	12	£0.10	TP5-32	5	32	£0.25	TP10-45	10	45	£1.14
TP2.5-14	2.5	14	£0.10	TP5-36	5	36	£0.28	TP10-50	10	50	£1.34
TP2.5-16	2.5	16	£0.11	TP5-40	5	40	£0.30	TP10-55	10	55	£1.55
TP2.5-18	2.5	18	£0.11	TP5-45	5	45	£0.31	TP10-60	10	60	£1.62
TP2.5-20	2.5	20	£0.12	TP5-50	5	50	£0.33	TP10-65	10	65	£1.82
TP2.5-24	2.5	24	£0.13	TP6-10	6	10	£0.13	TP10-70	10	70	£1.92
TP3-6	3.0	6	£0.09	TP6-12	6	12	£0.14	TP10-80	10	80	£2.07
TP3-8	3.0	8	£0.10	TP6-14	6	14	£0.15	TP10-90	10	90	£2.55
TP3-10	3.0	10	£0.10	TP6-16	6	16	£0.15	TP10-100	10	100	£2.73
TP3-12	3.0	12	£0.10	TP6-18	6	18	£0.16	TP12-30	12	30	£1.19
TP3-14	3.0	14	£0.10	TP6-20	6	20	£0.19	TP12-32	12	32	£1.22
TP3-16	3.0	16	£0.11	TP6-22	6	22	£0.25	TP12-36	12	36	£1.23
TP3-18	3.0	18	£0.12	TP6-24	6	24	£0.26	TP12-40	12	40	£1.33
TP3-20	3.0	20	£0.13	TP6-28	6	28	£0.31	TP12-45	12	45	£1.50
TP3-22	3.0	22	£0.14	TP6-30	6	30	£0.32	TP12-50	12	50	£1.58
TP3-24	3.0	24	£0.14	TP6-32	6	32	£0.33	TP12-55	12	55	£1.73
TP3-28	3.0	28	£0.15	TP6-36	6	36	£0.33	TP12-60	12	60	£1.91
TP3-30	3.0	30	£0.15	TP6-40	6	40	£0.34	TP12-65	12	65	£2.07
TP4-6	4.0	6	£0.09	TP6-45	6	45	£0.40	TP12-70	12	70	£2.24
TP4-8	4.0	8	£0.10	TP6-50	6	50	£0.44	TP12-80	12	80	£2.50
TP4-10	4.0	10	£0.10	TP6-55	6	55	£0.58	TP12-90	12	90	£2.73
TP4-12	4.0	12	£0.11	TP6-60	6	60	£0.58	TP12-100	12	100	£2.84
TP4-14	4.0	14	£0.12								

Material

Mild Steel (1.0718) DIN 1B in diameters 1.5 to 20mm.

Other Info.

Industry standard of 1:50, with the nominal diameter being the smaller end.

Also available in A2 Stainless

+44 (0)1246 455500

+44 (0)1246 455522

ondrives

sales@ondrives.com

www.ondrives.com

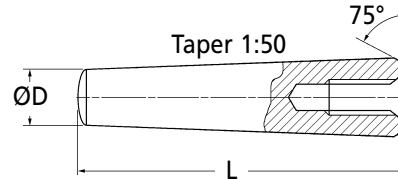
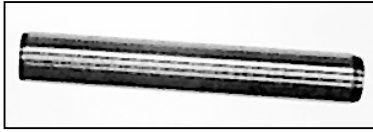
Product information updated 1st April 2011 and subject to change. Please contact Sales for the latest prices and availability.

MECHANICAL

Extractable Mild Steel Taper Pins

6 - 20mm Dia.

TPX



Discounts: 6+ -12% 20+ -25% 40+ -33% 60+ -37% 100+ -42% 200+ -50% 500+ -55%

Part Number	ØD	L	Thread	Price Each 1 - 5	Part Number	ØD	L	Thread	Price Each 1 - 5
TPX6-16	6	16	M4	£1.34	TPX10-100	10	100	M6	£5.47
TPX6-18	6	18	M4	£1.34	TPX10-110	10	110	M6	£6.15
TPX6-20	6	20	M4	£1.34	TPX10-120	10	120	M6	£6.40
TPX6-24	6	24	M4	£1.35	TPX12-32	12	32	M8	£2.86
TPX6-26	6	26	M4	£1.38	TPX12-36	12	36	M8	£2.97
TPX6-28	6	28	M4	£1.40	TPX12-40	12	40	M8	£3.03
TPX6-30	6	30	M4	£1.41	TPX12-45	12	45	M8	£3.17
TPX6-32	6	32	M4	£1.43	TPX12-50	12	50	M8	£3.27
TPX6-36	6	36	M4	£1.44	TPX12-55	12	55	M8	£3.40
TPX6-40	6	40	M4	£1.50	TPX12-60	12	60	M8	£3.59
TPX6-45	6	45	M4	£1.57	TPX12-70	12	70	M8	£3.80
TPX6-50	6	50	M4	£1.62	TPX12-80	12	80	M8	£4.62
TPX6-55	6	55	M4	£1.64	TPX12-90	12	90	M8	£6.31
TPX6-60	6	60	M4	£1.82	TPX12-100	12	100	M8	£6.58
TPX6-70	6	70	M4	£2.23	TPX12-110	12	110	M8	£6.89
TPX6-80	6	80	M4	£3.18	TPX12-120	12	120	M8	£7.30
TPX6-90	6	90	M4	£4.12	TPX14-40	14	40	M8	£4.76
TPX8-20	8	20	M5	£1.61	TPX14-45	14	45	M8	£4.95
TPX8-24	8	24	M5	£1.64	TPX14-50	14	50	M8	£5.11
TPX8-26	8	26	M5	£1.66	TPX14-55	14	55	M8	£5.20
TPX8-28	8	28	M5	£1.70	TPX14-60	14	60	M8	£5.36
TPX8-30	8	30	M5	£1.70	TPX14-70	14	70	M8	£5.81
TPX8-32	8	32	M5	£1.78	TPX14-80	14	80	M8	£6.24
TPX8-36	8	36	M5	£1.81	TPX14-90	14	90	M8	£6.73
TPX8-40	8	40	M5	£1.83	TPX14-100	14	100	M8	£8.69
TPX8-45	8	45	M5	£1.93	TPX14-110	14	110	M8	£7.44
TPX8-50	8	50	M5	£2.01	TPX14-120	14	120	M8	£10.08
TPX8-55	8	55	M5	£2.07	TPX16-40	16	40	M10	£5.36
TPX8-60	8	60	M5	£2.12	TPX16-45	16	45	M10	£5.41
TPX8-70	8	70	M5	£2.70	TPX16-50	16	50	M10	£5.47
TPX8-80	8	80	M5	£3.29	TPX16-55	16	55	M10	£5.81
TPX8-90	8	90	M5	£4.24	TPX16-60	16	60	M10	£5.89
TPX8-100	8	100	M5	£4.77	TPX16-70	16	70	M10	£6.12
TPX8-110	8	110	M5	£5.84	TPX16-80	16	80	M10	£6.84
TPX8-120	8	120	M5	£6.09	TPX16-90	16	90	M10	£8.51
TPX10-24	10	24	M6	£2.28	TPX16-100	16	100	M10	£9.59
TPX10-26	10	26	M6	£1.83	TPX16-110	16	110	M10	£10.40
TPX10-28	10	28	M6	£2.33	TPX16-120	16	120	M10	£10.96
TPX10-30	10	30	M6	£2.18	TPX20-40	20	40	M12	£7.69
TPX10-32	10	32	M6	£2.24	TPX20-45	20	45	M12	£6.26
TPX10-36	10	36	M6	£2.27	TPX20-50	20	50	M12	£8.51
TPX10-40	10	40	M6	£2.32	TPX20-55	20	55	M12	£6.93
TPX10-45	10	45	M6	£2.46	TPX20-60	20	60	M12	£8.86
TPX10-50	10	50	M6	£2.60	TPX20-70	20	70	M12	£9.39
TPX10-55	10	55	M6	£2.76	TPX20-80	20	80	M12	£10.74
TPX10-60	10	60	M6	£3.23	TPX20-90	20	90	M12	£11.56
TPX10-70	10	70	M6	£3.38	TPX20-100	20	100	M12	£13.13
TPX10-80	10	80	M6	£3.62	TPX20-110	20	110	M12	£14.40
TPX10-90	10	90	M6	£5.14	TPX20-120	20	120	M12	£15.75

Material

Mild Steel (1.0718) DIN 7978 in diameters 6 to 20mm.

Other Info.

Taper pins with threads facilitate removal from blind holes. Industry standard of 1:50, with the nominal diameter being the smaller end. Also available in A2 Stainless.

+44 (0)1246 455500
+44 (0)1246 455522

ondrives

sales@ondrives.com
www.ondrives.com

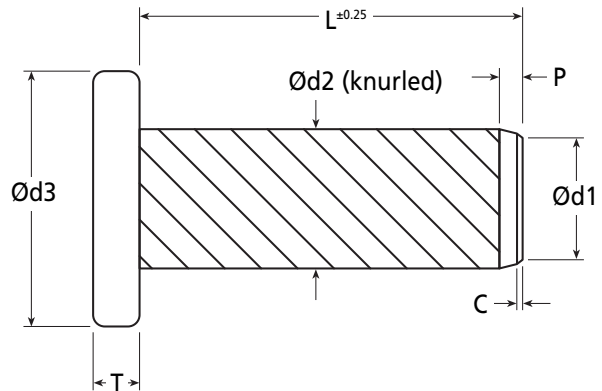
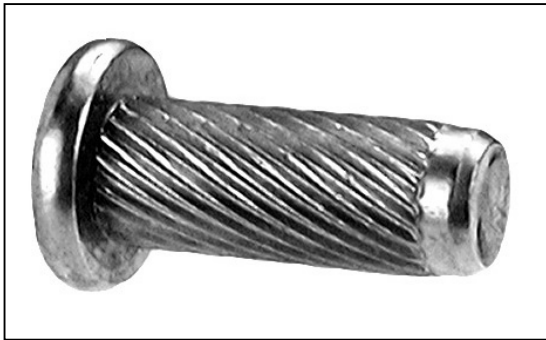
Product information updated 1st April 2011 and subject to change. Please contact Sales for the latest prices and availability.

MECHANICAL

DSF

Hammer Drive Pins (Flat Head)

Low Carbon Steel (Series HP210) : 1.4 - 6mm Dia.



Discounts: 50+ -15% 100+ -25% 200+ -35% 500+ -50% 1000+ -60% 2000+ -65% 3000+ -70% 5000+ -80%

Part Number	Nominal Dia.	L ^{±0.25}	Ød1 ^{+0.00/-0.05}	Ød2 ^{+0.00/-0.10}	Ød3 max	Head Thickness max	Chamfer C	Pilot Length P	Rec. Hole dia Min	Rec. Hole dia Max	Price Each 1 - 49
DSF1.4-5	Ø1.4	5	1.40	1.63	2.60	0.55	0.15	1	1.4	1.46	£0.16
DSF1.4-6	Ø1.4	6	1.40	1.63	2.60	0.55	0.15	1	1.4	1.46	£0.16
DSF1.4-8	Ø1.4	8	1.40	1.63	2.60	0.55	0.15	1	1.4	1.46	£0.16
DSF1.6-5	Ø1.6	5	1.60	1.83	3.00	0.65	0.15	1	1.6	1.66	£0.16
DSF1.6-6	Ø1.6	6	1.60	1.83	3.00	0.65	0.15	1	1.6	1.66	£0.16
DSF1.6-8	Ø1.6	8	1.60	1.83	3.00	0.65	0.15	1	1.6	1.66	£0.16
DSF2-6	Ø2.0	6	2.00	2.30	3.70	0.75	0.15	1	2.0	2.06	£0.21
DSF2-8	Ø2.0	8	2.00	2.30	3.70	0.75	0.15	1	2.0	2.06	£0.21
DSF2-10	Ø2.0	10	2.00	2.30	3.70	0.75	0.15	1	2.0	2.06	£0.24
DSF2.5-6	Ø2.5	6	2.50	2.80	4.60	0.90	0.15	1	2.5	2.56	£0.26
DSF2.5-8	Ø2.5	8	2.50	2.80	4.60	0.90	0.15	1	2.5	2.56	£0.26
DSF2.5-10	Ø2.5	10	2.50	2.80	4.60	0.90	0.15	1	2.5	2.56	£0.26
DSF3-8	Ø3.0	8	2.95	3.35	5.45	1.20	0.15	1	3.0	3.06	£P.O.A
DSF3-10	Ø3.0	10	2.95	3.35	5.45	1.20	0.15	1	3.0	3.06	£0.33
DSF3-12	Ø3.0	12	2.95	3.35	5.45	1.20	0.15	1	3.0	3.06	£0.37
DSF4-10	Ø4.0	10	4.00	4.35	7.25	1.50	0.40	2	4.0	4.08	£0.43
DSF4-12	Ø4.0	12	4.00	4.35	7.25	1.50	0.40	2	4.0	4.08	£0.43
DSF4-16	Ø4.0	16	4.00	4.35	7.25	1.50	0.40	2	4.0	4.08	£0.48
DSF5-12	Ø5.0	12	5.00	5.35	9.10	1.80	0.40	2	5.0	5.08	£0.56
DSF5-16	Ø5.0	16	5.00	5.35	9.10	1.80	0.40	2	5.0	5.08	£0.79
DSF5-20	Ø5.0	20	5.00	5.35	9.10	1.80	0.40	2	5.0	5.08	£0.68
DSF6-16	Ø6.0	16	6.00	6.35	10.80	2.20	0.40	2	6.0	6.08	£0.76
DSF6-20	Ø6.0	20	6.00	6.35	10.80	2.20	0.40	2	6.0	6.08	£1.07

Material

Low carbon Steel (self-colour, not plated) cold formed pin.

Features

- Simple, low cost assembly
- Secure - unlike a machine screw, a drive stud does not depend on tightening torque to be retained in the assembly.
- Drive studs do not require lock washers to prevent back-out.

Other Info.

Designed for standard metric hole sizes and installation by hammer or press, drive studs are cold formed pins with helical knurls and are used to replace screws where the need to remove the pin is unlikely

Drive studs are made in low carbon steel and as the knurl has to cut its way into the walls of the hole, they are designed for use with unhardened materials such as mild steel, aluminium, brass and plastics.

We offer the flat headed type which is more easily adapted to automated assembly systems.

+44 (0)1246 455500

+44 (0)1246 455522

ondrives

sales@ondrives.com

www.ondrives.com

Product information updated 1st April 2011 and subject to change. Please contact Sales for the latest prices and availability.