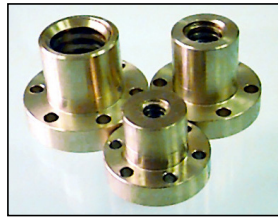
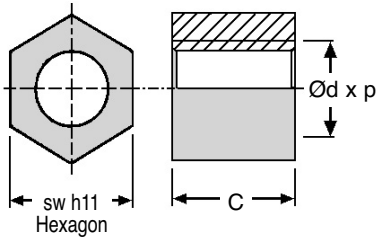
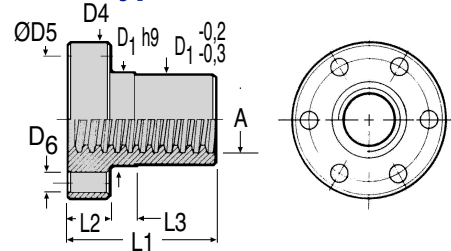




**SKM Type**



**BFM Type**



**Discounts:** 6+ -15%   20+ -20%   40+ -25%   60+ -30%   100+ -40%

Part Number Hexagon Steel		Ød	p	sw h11	C	Nut Weight Kg	Contact Surface mm <sup>2</sup>	Price Each 1 - 5	
RH	LH							RH	LH
SKM102	SKM102/LH	10	2	17	15 <sup>±0.15</sup>	0.0219	150	£3.26	£4.58
SKM123	SKM123/LH	12	3	19	18 <sup>±0.15</sup>	0.0319	210	£3.67	£5.15
SKM143	SKM143/LH	14	3	22	21 <sup>±0.15</sup>	0.0488	285	£4.34	£6.10
SKM164	SKM164/LH	16	4	24	24 <sup>±0.15</sup>	0.0649	365	£4.96	£6.95
SKM184	SKM184/LH	18	4	27	27 <sup>±0.15</sup>	0.0912	470	£5.84	£8.21
SKM204	SKM204/LH	20	4	30	30 <sup>±0.15</sup>	0.1236	590	£6.42	£9.00
SKM225	SKM225/LH	22	5	30	33 <sup>±0.15</sup>	0.1245	700	£7.20	£10.09
SKM245	SKM245/LH	24	5	36	36 <sup>±0.15</sup>	0.2192	845	£8.51	£11.92
SKM285	SKM285/LH	28	5	41	42 <sup>±0.25</sup>	0.3181	1175	£13.14	£18.42
SKM306	SKM306/LH	30	6	46	45 <sup>±0.25</sup>	0.4450	1335	£16.04	£22.48
SKM326	SKM326/LH	32	6	50	48 <sup>±0.25</sup>	0.5668	1430	£19.19	£26.90
SKM366	SKM366/LH	36	6	55	54 <sup>±0.25</sup>	0.7078	1950	£22.41	£31.39
SKM407	SKM407/LH	40	7	60	60 <sup>±0.25</sup>	0.8927	2400	£33.72	£47.23
SKM447	-	44	7	65	66 <sup>±0.25</sup>	1.5378	2940	£46.18	-
SKM508	-	50	8	75	75 <sup>±0.25</sup>	1.8894	3790	£120.18	-
SKM609	-	60	9	90	90 <sup>±0.25</sup>	3.2773	5490	£195.94	-
SKM701	-	70	10	100	100 <sup>±0.25</sup>	4.1932	7140	£249.94	-

Part Number Flanged Bronze		ØA	ØD1 h9	ØD4 h11	ØD5	6 Holes ØD6	L1 <sup>-0.2</sup>	L2 <sup>+0.15 -0.00</sup>	L3 <sup>+0.00 -0.15</sup>	Contact Surface mm <sup>2</sup>	Nut Weight Kg	Price Each 1 - 5	
RH	LH											RH	LH
BFM123	BFM123/LH	12x3TR	28	48	38	6	35	12	8	400	0.266	£51.41	£72.00
BFM164	BFM164/LH	16x4TR	28	48	38	6	35	12	8	530	0.258	£51.91	£72.68
BFM184	BFM184/LH	18x4TR	28	48	38	6	35	12	8	610	0.228	£52.60	£73.66
BFM204	BFM204/LH	20x4TR	32	55	45	7	44	12	8	870	0.346	£77.19	£108.10
BFM225	BFM225/LH	22x5TR	32	55	45	7	44	12	8	1030	0.322	£78.65	£110.11
BFM245	BFM245/LH	24x5TR	32	55	45	7	44	12	8	1040	0.304	£83.82	£151.13
BFM285	BFM285/LH	28x5TR	38	62	50	7	46	14	8	1200	0.442	£96.62	£147.77
BFM306	BFM306/LH	30x6TR	38	62	50	7	46	14	8	1370	0.408	£110.08	£154.12
BFM326	BFM326/LH	32x6TR	45	70	58	7	54	16	10	1710	0.706	£122.93	£172.11
BFM366	BFM366/LH	36x6TR	45	70	58	7	54	16	10	1950	0.606	£125.86	£176.23
BFM407	BFM407/LH	40x7TR	63	95	78	9	66	16	12	2650	1.700	£178.88	£250.44
BFM447	-	44x7TR	63	95	78	9	66	16	12	2940	1.524	£283.75	-
BFM508	-	50x8TR	72	110	90	11	75	18	14	4540	2.324	£288.14	-
BFM609	-	60x9TR	88	130	110	11	90	20	16	5490	3.942	£346.76	-
BFM7010	-	70x10TR	95	130	110	11	105	22	17	7500	4.465	£423.51	-

### Material

**SKM:** Carbon Manganese Steel S300 Pb (11 SMn Pb37). **BFM:** Bronze CuSn8P.  
It is possible to weld SKM Type but difficulties may arise with bubbling due to the sulphur content.

### Other Info.

To be used with our screws: **LFM, LSM**

**SKM:** Manual control • Low rotation speeds • For clamping or locking functions • For receiving dead weights

**BFM:** Manual or powered control • Low and medium rotation speeds • For working under load.

For power transmission and continuous use, always use bronze nuts, never steel.

Nuts and screws should always be lubricated with grease or oil. Steel nuts should be used with steel screws for hand motion only.