

# LINEAR MOTION

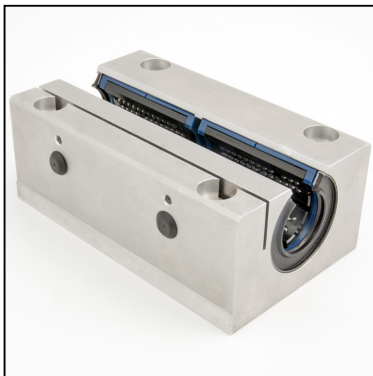
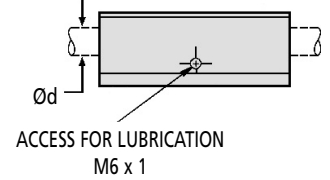
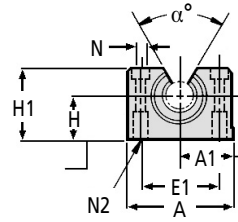
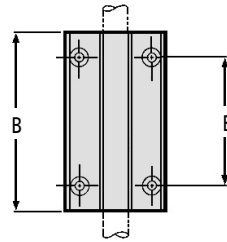
## Super Smart Ball Bushing\* Bearing Twin Pillow Blocks

Open Type : Fixed & Adjustable (Bearing Included)

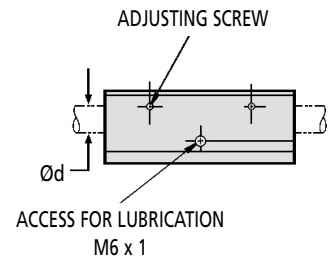
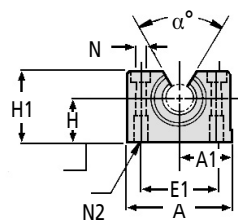
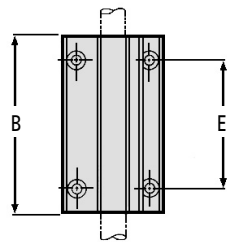
**LSTB-OP**  
**LSTB-OPAJ**



**LSTB-OP Type Open Fixed**



**LSTB-OPAJ Type Open Adjustable**



Designed for use with Hard Linear Shafting ZA & ZB Type (h6 tol.)

**Discounts: 6+ -10%**

Part Number	$\phi d^{(5)}$	H $\pm 0.02$	H1	A	A1 $\pm 0.02$	B	E $\pm 0.1$	E1 $\pm 0.1$	N Dia.	N2	$\alpha^\circ$	Mass (kg)	Dynamic Load $W^{(1)(2)}$ (N)	Load Limit $W_o^{(2)(4)}$ (N)	Price Each 1 - 5
<b>FIXED</b>															
LSTB-12OP	12	18	28	43	21.5	76	56	32	4.3	M5	70°	0.22	1220	1340	£214.22
LSTB-16OP	16	22	35	53	26.5	84	64	40	5.3	M6	70°	0.37	4400	4800	£247.08
LSTB-20OP	20	25	42	60	30.0	104	76	45	6.6	M8	50°	0.58	8000	8800	£278.96
LSTB-25OP	25	30	50	78	39.0	130	94	60	8.4	M10	60°	1.16	13400	14600	£346.97
LSTB-30OP	30	35	60	87	43.5	152	106	68	8.4	M10	55°	1.78	16600	18200	£399.87
LSTB-40OP	40	45	77	108	54.0	176	124	86	10.5	M12	54°	3.25	27400	30000	£591.97
<b>ADJUSTABLE</b>															
LSTB-12OPAJ	12	18	28	43	21.5	76	56	32	4.3	M5	70°	0.22	1220	1340	£270.16
LSTB-16OPAJ	16	22	35	53	26.5	84	64	40	5.3	M6	70°	0.37	4400	4800	£311.57
LSTB-20OPAJ	20	25	42	60	30.0	104	76	45	6.6	M8	50°	0.58	8000	8800	£349.17
LSTB-25OPAJ	25	30	50	78	39.0	130	94	60	8.4	M10	60°	1.16	13400	14600	£412.36
LSTB-30OPAJ	30	35	60	87	43.5	152	106	68	8.4	M10	55°	1.78	16600	18200	£478.51
LSTB-40OPAJ	40	45	77	108	54.0	176	124	86	10.5	M12	54°	3.25	27400	30000	£694.53

### Material

**Housing:** Aluminium - carbon steel and engineered polymer bearing fitted.

### Other Info.

Super Smart ball bushing bearing fitted.

\* Trademark of Thomson Industries Inc.