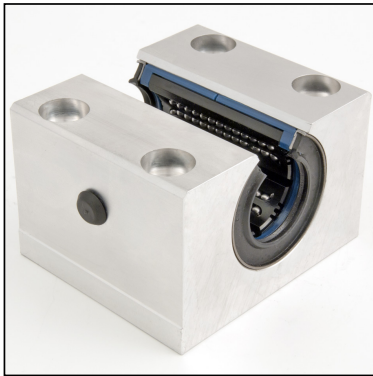


LINEAR MOTION

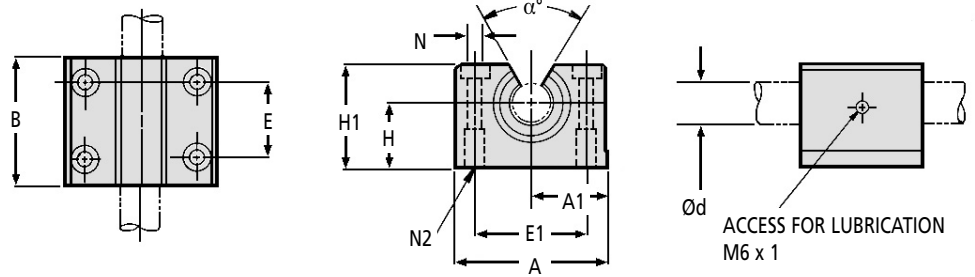
Super Smart Ball Bushing* Bearing Pillow Blocks

Open Type : Fixed & Adjustable (Bearing Included)

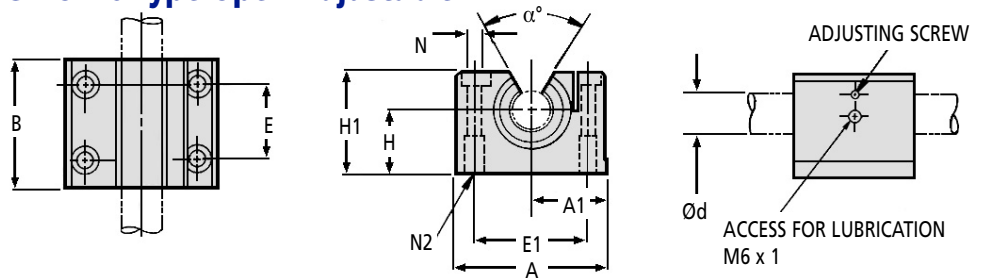
LSB-OP
LSB-OPAJ



LSB-OP Type Open Fixed



LSB-OPAJ Type Open Adjustable



Designed for use with Hard Linear Shafting ZA & ZB Type (h6 tol.)

Std. Diametral Clearances Closed Type

| Nom. Size $\varnothing d$ (mm) | Diametral Clearance (μm) |
|--------------------------------|---------------------------------|
| 12 | +26 +3 |
| 16 | +26 +3 |
| 20 | +30 +4 |
| 25 | +30 +4 |
| 30 | +30 +4 |
| 40 | +35 +5 |

Discounts: 6+ -10%

| Part Number | $\varnothing d^{(5)}$ | H ± 0.02 | H1 | A | A1 ± 0.02 | B | E ± 0.1 | E1 ± 0.1 | N Dia. | N2 | α° | Mass (kg) | Dynamic Load $W^{(1)(2)}$ (N) | Load Limit $W_0^{(2)(4)}$ (N) | Price Each 1 - 5 |
|-------------------|-----------------------|--------------|----|-----|---------------|----|-------------|--------------|--------|-----|----------------|-----------|-------------------------------|-------------------------------|------------------|
| FIXED | | | | | | | | | | | | | | | |
| LSB-12OP | 12 | 18 | 28 | 43 | 21.5 | 39 | 23 | 32 | 4.3 | M5 | 70° | 0.11 | 750 | 825 | £110.58 |
| LSB-16OP | 16 | 22 | 35 | 53 | 26.5 | 43 | 26 | 40 | 5.3 | M6 | 70° | 0.19 | 2200 | 2400 | £127.47 |
| LSB-20OP | 20 | 25 | 42 | 60 | 30.0 | 54 | 32 | 45 | 6.6 | M8 | 50° | 0.30 | 4000 | 4400 | £144.06 |
| LSB-25OP | 25 | 30 | 51 | 78 | 39.0 | 67 | 40 | 60 | 8.4 | M10 | 60° | 0.60 | 6700 | 7300 | £169.73 |
| LSB-30OP | 30 | 35 | 60 | 87 | 43.5 | 79 | 45 | 68 | 8.4 | M10 | 55° | 0.93 | 8300 | 9100 | £199.25 |
| LSB-40OP | 40 | 45 | 77 | 108 | 54.0 | 91 | 58 | 86 | 10.5 | M12 | 54° | 1.66 | 13700 | 15000 | £316.17 |
| ADJUSTABLE | | | | | | | | | | | | | | | |
| LSB-12OPAJ | 12 | 18 | 28 | 43 | 21.5 | 39 | 23 | 32 | 4.3 | M5 | 70° | 0.11 | 750 | 825 | £119.09 |
| LSB-16OPAJ | 16 | 22 | 35 | 53 | 26.5 | 43 | 26 | 40 | 5.3 | M6 | 70° | 0.19 | 2200 | 2400 | £137.30 |
| LSB-20OPAJ | 20 | 25 | 42 | 60 | 30.0 | 54 | 32 | 45 | 6.6 | M8 | 50° | 0.30 | 4000 | 4400 | £147.04 |
| LSB-25OPAJ | 25 | 30 | 51 | 78 | 39.0 | 67 | 40 | 60 | 8.4 | M10 | 60° | 0.60 | 6700 | 7300 | £182.91 |
| LSB-30OPAJ | 30 | 35 | 60 | 87 | 43.5 | 79 | 45 | 68 | 8.4 | M10 | 55° | 0.93 | 8300 | 9100 | £214.57 |
| LSB-40OPAJ | 40 | 45 | 77 | 108 | 54.0 | 91 | 58 | 86 | 10.5 | M12 | 54° | 1.66 | 13700 | 15000 | £340.59 |

Material

Housing: Aluminium - carbon steel and engineered polymer bearing fitted

Other Info.

Super Smart ball bushing bearing fitted.

(1) For rated travel life of 100km. For longer travel lives, reduce load to: $W \times (100/\text{Life})^{0.33}$ where (km) is the required travel life.

Do not exceed the Dynamic Load Rating for travel life of less than 100km.

(2) The load Limit is the maximum load that may be applied to a bearing/shaft. It is important to analyse the application so that peak and/or shock do not exceed the Load Limit.

(3) For bearing diametral clearances see the above table.

(4) The load capacities W and W_0 are valid for a resultant load applied at 90° with the ball tracks oriented as shown in the polar graphs on the Super Smart Bearing pages. If the resultant acts along another direction, the appropriate multiplicative correction factor, K_α , should be applied to W and W_0 respectively. Open type bearings have reduced load capacities when used in pull-off situations.

(5) Adjusted to nominal.

* Trademark of Thomson Industries Inc.

+44 (0)1246 455500
+44 (0)1246 455522

ondrives

sales@ondrives.com
www.ondrives.com

Product information updated 1st April 2011 and subject to change. Please contact Sales for the latest prices and availability.