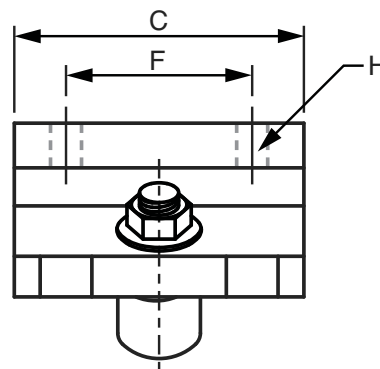
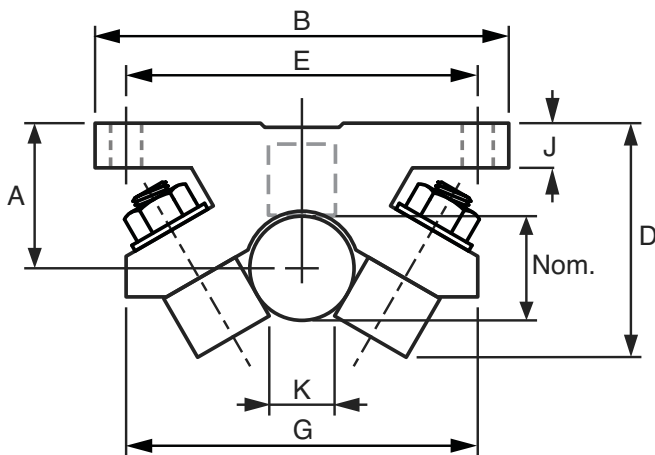
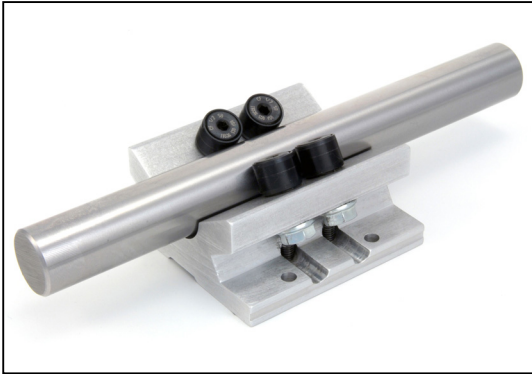


**MSPB**

# LINEAR MOTION

## Roller Bearing Pillow Blocks

Single



### Roller Bearing Pillow Blocks

Part Number	Shaft Dia.	Dyn. Load Kg	WT. Kg	A <sup>±0.08</sup>	B	C	D	E <sup>±0.13</sup>	F <sup>±0.13</sup>	G	H	J	K	Price Each
MSPB-16-OPN	16	226.76	0.23	22.28	63.50	44.45	35.72	53.98	25.58	53.98	4.76	6.86	9.53	£105.93
MSPB-20-OPN	20	272.11	0.27	24.28	69.85	47.63	39.69	60.33	31.75	53.98	4.76	7.62	11.11	£113.07
MSPB-25-OPN	25	433.11	0.45	29.95	82.55	66.68	50.80	73.03	44.45	69.85	5.56	9.14	17.46	£136.47
MSPB-30-OPN	30	634.92	0.91	37.21	101.60	85.73	65.09	88.90	50.80	88.90	5.56	10.77	20.64	£185.83

### Ck53/Cf53 Steel 62 HRC Linear Shafting (To Suit MSPB)

Discounts:	6+ -20%	10+ -25%	20+ -30%	50+ -40%	100+ -42%	200+ -45%
------------	---------	----------	----------	----------	-----------	-----------

Part Number	Nominal Dia. h6	Tolerance µm	Standard Length	Maximum Length	Weight per Metre Kg	Depth of Hardening	Price Each 1 - 5 per 1000mm
Z-16-1000A	16	0/-11	1000	3800	1.57	1.60	£34.03
Z-20-1000A	20	0/-13	1000	7000	2.45	1.60	£38.28
Z-25-1000A	25	0/-13	1000	7800	3.83	1.80	£55.31
Z-30-1000A	30	0/-13	1000	7600	5.51	2.00	£68.09

### Material

**Pillow Block:** Aluminium**Rollers:** Exposed surfaces of the rollers have a black oxide finish to resist corrosion

### Performance

**Shafting Surface finish:** <0.30µm Ra**Straightness:** 0.10mm/m

### Other Info.

Illustrated shaft is not supplied as standard with the pillow block but can be purchased separately.

The single pillow block is the most widely used and is an excellent choice for standard linear movement or applications where there is severe shaft deflection. The single pillow block can handle severe misalignment applications and can even travel a radius.

+44 (0)1246 455500

+44 (0)1246 455522

**ondrives**

sales@ondrives.com

www.ondrives.com

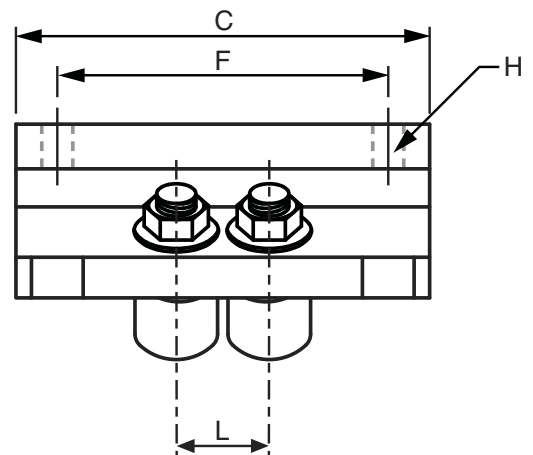
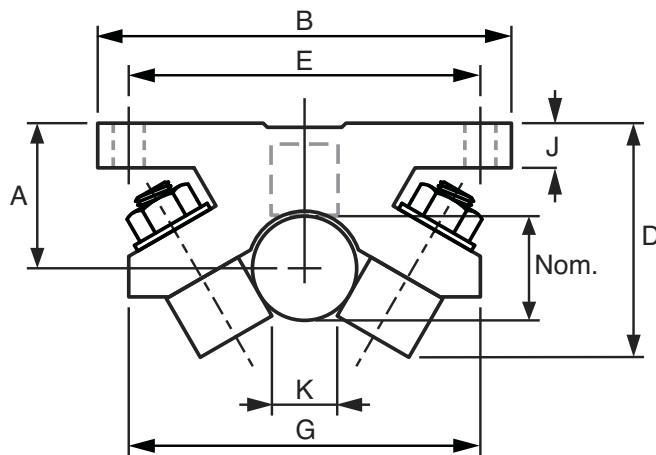
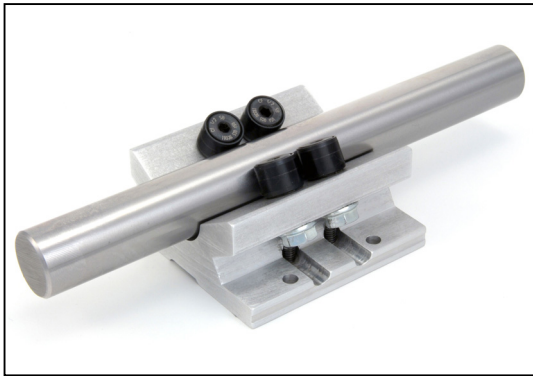
Product information updated 1st April 2011 and subject to change. Please contact Sales for the latest prices and availability.

# LINEAR MOTION

MDPB

## Roller Bearing Pillow Blocks

Double



### Roller Bearing Pillow Blocks

Part Number	Shaft Dia.	Dyn. Load Kg	WT. Kg	A <sup>±0.08</sup>	B	C	D	E <sup>±0.13</sup>	F <sup>±0.13</sup>	G	H	J	K	L	Price Each
MDPB-16-OPN	16	453.51	0.32	22.28	63.50	63.50	35.72	53.98	50.80	53.98	4.76	6.86	9.53	14.27	£205.90
MDPB-20-OPN	20	544.22	0.36	24.28	69.85	66.68	39.69	60.33	31.75	53.98	4.76	7.62	11.11	14.27	£210.24
MDPB-25-OPN	25	866.21	0.54	29.95	82.55	66.68	50.80	73.03	44.45	69.85	5.56	9.14	17.46	18.29	£259.44
MDPB-30-OPN	30	1269.84	1.36	37.21	101.60	85.73	65.09	88.90	50.80	88.90	5.56	9.14	20.64	23.80	£353.10

### Ck53/Cf53 Steel 62 HRC Linear Shafting (To Suit MDPB)

**Discounts:** 6+ -20%   10+ -25%   20+ -30%   50+ -40%   100+ -42%   200+ -45%

Part Number	Nominal Dia. h6	Tolerance µm	Standard Length	Maximum Length	Weight per Metre Kg	Depth of Hardening	Price Each 1 - 5 per 1000mm
Z-16-1000A	16	0/-11	1000	3800	1.57	1.60	£34.03
Z-20-1000A	20	0/-13	1000	7000	2.45	1.60	£38.28
Z-25-1000A	25	0/-13	1000	7800	3.83	1.80	£55.31
Z-30-1000A	30	0/-13	1000	7600	5.51	2.00	£68.09

### Material

**Pillow Block:** Aluminium

**Rollers:** Exposed surfaces of the rollers have a black oxide finish to resist corrosion

### Performance

**Shafting Surface finish:** <0.30µm Ra

**Straightness:** 0.10mm/m

### Other Info.

Illustrated shaft is not supplied as standard with the pillow block but can be purchased separately.

The dynamic load rating of the double pillow block is twice of the single pillow block. The double pillow block can be mounted in place of the single pillow blocks in most applications due to the similar mounting footprint. They also provide a solution for applications that were under-engineered and now require a greater load capacity pillow block to fit into the same area or, in cases that require longer travel life.

+44 (0)1246 455500  
+44 (0)1246 455522

**ondrives**

sales@ondrives.com  
www.ondrives.com

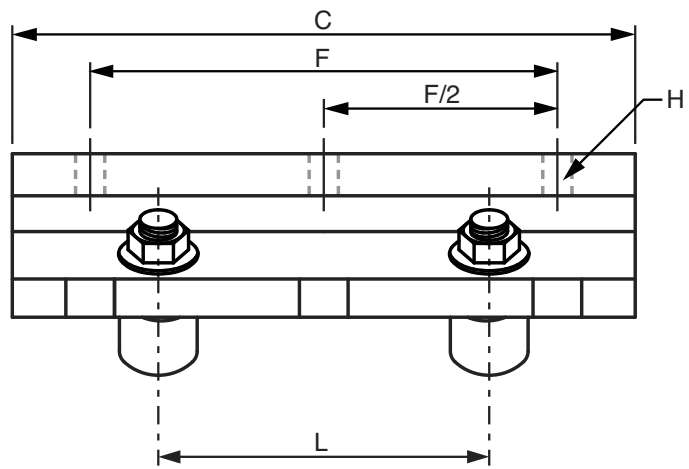
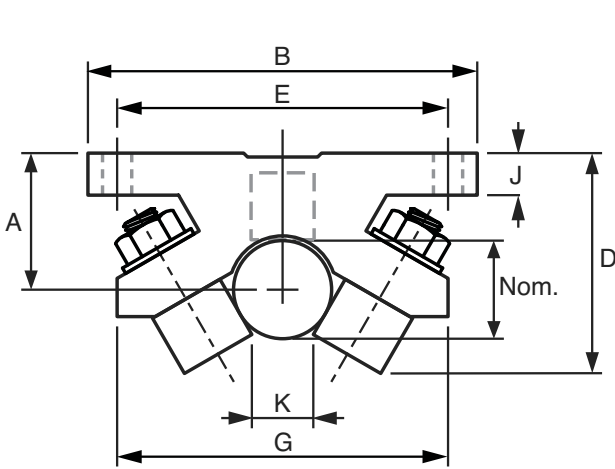
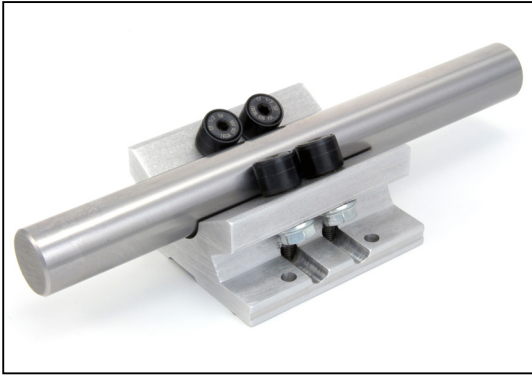
Product information updated 1st April 2011 and subject to change. Please contact Sales for the latest prices and availability.

**MTWN**

# LINEAR MOTION

## Roller Bearing Pillow Blocks

Twin



### Roller Bearing Pillow Blocks

Part Number	Shaft Dia.	Dyn. Load Kg	WT. Kg	A <sup>±0.08</sup>	B	C	D	E <sup>±0.13</sup>	F <sup>±0.13</sup>	G	H	J	K	L	Price Each
MTWN-16-OPN	16	453.51	0.45	22.28	63.50	101.60	35.72	53.98	76.20	53.98	4.76	6.86	9.53	53.98	£211.81
MTWN-20-OPN	20	544.22	0.54	24.28	69.85	114.30	39.69	60.33	88.90	53.98	4.76	7.62	11.11	63.50	£226.12
MTWN-25-OPN	25	866.21	1.04	29.95	82.55	152.40	50.80	73.03	114.30	69.85	5.56	9.14	17.46	95.25	£272.94
MTWN-30-OPN	30	1269.84	2.00	37.21	101.60	190.50	65.09	88.90	139.70	88.90	5.56	10.77	20.64	117.48	£371.67

### Ck53/Cf53 Steel 62 HRC Linear Shafting (To Suit MTWN)

<b>Discounts:</b> 6+ -20%	10+ -25%	20+ -30%	50+ -40%	100+ -42%	200+ -45%
---------------------------	----------	----------	----------	-----------	-----------

Part Number	Nominal Dia. h6	Tolerance µm	Standard Length	Maximum Length	Weight per Metre Kg	Depth of Hardening	Price Each 1 - 5 per 1000mm
Z-16-1000A	16	0/-11	1000	3800	1.57	1.60	£34.03
Z-20-1000A	20	0/-13	1000	7000	2.45	1.60	£38.28
Z-25-1000A	25	0/-13	1000	7800	3.83	1.80	£55.31
Z-30-1000A	30	0/-13	1000	7600	5.51	2.00	£68.09

### Material

**Pillow Block:** Aluminium**Rollers:** Exposed surfaces of the rollers have a black oxide finish to resist corrosion

### Performance

**Shafting Surface finish:** <0.30µm Ra**Straightness:** 0.10mm/m

### Other Info.

Illustrated shaft is not supplied as standard with the pillow block but can be purchased separately.

The twin pillow block load rating is the same as the double pillow block and is a good choice when using only one pillow block per shaft or in applications subjected to cantilever load or moment. The twin model also offers an additional pair of mounting holes if needed.

+44 (0)1246 455500

+44 (0)1246 455522

**ondrives**

sales@ondrives.com

www.ondrives.com

Product information updated 1st April 2011 and subject to change. Please contact Sales for the latest prices and availability.

# LINEAR MOTION

## Roller Bearing Pillow Blocks Advantages

Designed to overcome the limitations of linear bearings with multiple re-circulating ball circuits and to provide a product with trouble-free operation, our bearing pillow blocks offer the following advantages:

### Adjustment

All roller bearing pillow blocks are constructed with an adjustable eccentric stud feature to allow easy radial clearance adjustment. The clearance is set at the factory for optimum shaft to roller clearance. This shaft clearance can easily be adjusted to provide for very loose to preload conditions.

### Alignment

The single roller bearing pillow block is self aligning due to its unique design. The roller bearing pillow block has a higher tolerance to shaft deflection than the re-circulating ball pillow block. In most applications the double and twin models also either match or exceed the tolerances for misalignment offered by the recirculating ball pillow block.

### Corrosion Resistance

All roller bearing pillow blocks are constructed with an aluminium body. The exposed surfaces of the rollers have a black oxide finish to resist corrosion.

### Higher Speeds

The design of the roller bearing pillow block incorporates a larger rolling diameter than ball bushing pillow blocks. This allows operation at significantly higher speeds and acceleration than the equivalent ball bushing pillow blocks.

### Longer Life and Shaft Protection

Unlike ball bushing pillow blocks which create a point contact between the ball and shaft, the main roller outer race of the roller bearing pillow block has a concave groove to match the shaft diameter. This increases a line contact versus a point contact. The point contact associated with recirculating ball bushings generates very high stress and is prone to shaft grooving and premature shaft failure.

### Rebuildable

Each roller can be easily replaced without scrapping the entire pillow block.

### Low Friction

The roller bearing pillow blocks have a very low "rolling" dynamic coefficient friction (0.004 on average) and a very low resistance to motion. Unlike ball bushing pillow blocks which require shaft seals for proper operation the roller bearing pillow block has individually sealed rollers and does not require shaft seals which generate resistance to motion.

### Lubrication

Each roller bearing is individually lubricated with a lithium base grease and sealed. This minimises the need for periodic lubrication. Lithium base grease is preferred in this type of application because it has the ability to stand up under churning action in a confined space. This type of grease is also insoluble in water. The roller bearings are designed to run on an oiled shaft for optimum travel life. They can be run on a dry shaft but a shorter travel life will result.

### Operating Temperature

The operating temperature of the roller bearing pillow block is determined by the temperature limit of its lubricant and seals. The normal operation temperature range is -60°F to 250°F.

### Shaft Parallelism

The roller bearing pillow blocks unique floating option will permit the shafts to be out of parallelism. This is the only linear motion that can compensate for non-parallel shafts.

**Note:** For applications that exceed the normal bearing requirements or for applications that are unusual or abnormal, please ask sales. Further technical information is also available on request.

L

A

C

I

N

H

C

E

T