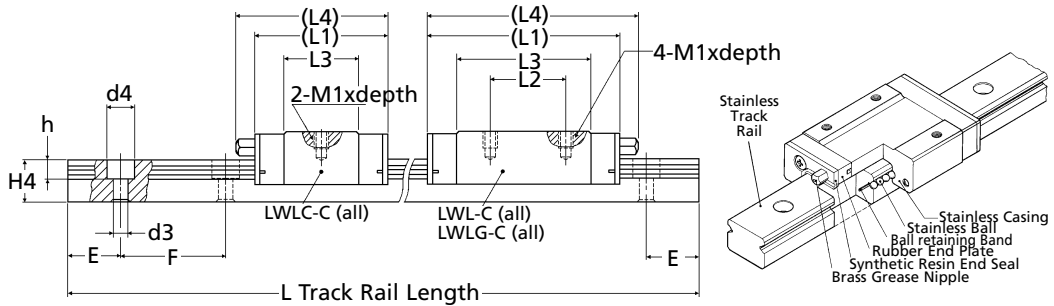
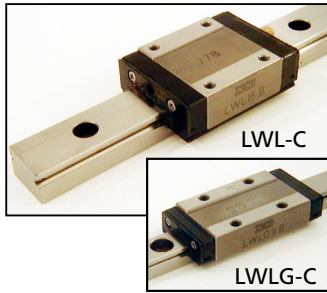


**LWL
LWL-C
LWLC-C
LWLG-C**

LINEAR MOTION

Precision Linear Slides - Stainless

L-Series Non Ball Retained - 2 Row 4 point Ball Contact



Part Number	L Track Rail Length	No. of Holes	Max. Length	Carriage (Slide Unit)	Price Each	
LWL20-120	120	2	960 Special Lengths - P.O.A. Max end butt 1740mm	-	£66.99	
LWL20-180	180	3		-	£94.08	
LWL20-240	240	4		-	£120.28	
LWL20-360	360	6		-	£172.60	
LWL20-480	480	8		-	£228.79	
LWL20-540	540	9		-	£274.54	
LWL20-600	600	10		-	£312.58	
LWL20-660	660	11		-	£350.26	
LWL20-720	720	13		-	£388.40	
LWL20-840	840	14		-	£466.02	
LWL20-960	960	16		-	£524.33	
LWL20-1440	1440	24		-	£838.58	
LWL20-C	Carriage				Standard Type	£88.51
LWLC20-C	Carriage				Short Type	£68.95
LWLG20-C	Carriage				High Rigidity long Type	£105.26
LWL25-240	240	4		960 Special Lengths - P.O.A. Max end butt 1740mm	-	£P.O.A
LWL25-300	300	5	-		£171.20	
LWL25-360	360	6	-		£P.O.A	
LWL25-480	480	8	-		£P.O.A	
LWL25-660	660	11	-		£P.O.A	
LWL25-900	900	15	-		£P.O.A	
LWL25-C	Carriage				Standard Type	£P.O.A
LWLC25-C	Carriage				Short Type	£P.O.A
LWLG25-C	Carriage			High Rigidity long Type	£148.18	

Material

Rail, Carriage & Balls: Stainless Steel. Hardened Similar to 440c. **End Plates:** Synthetic Resin. **End Seals:** Rubber **Grease Nipple:** Brass

Performance

Max. Speed: 3m/sec. **Maximum Temperature:** +100°C (Constant), +120°C (Intermittent)

Other Info.

Characteristics: Easy handling (Ball retaining band structure, prevents balls falling out).

Easy maintenance. Smooth operation. Low noise. High accuracy. Long life. High reliability.

Lubrication: Every 6 months under general use. Every 3 months for daily use. Use a lithium-soap based grease. (Oil can be used).

When ordering track rail, please order carriages required (1, 2, 3, etc.) per rail. For example:

Standard slide assembly of 1 x LWL20-240 rail and 2 x LWL20-C carriages = **LWL20-240C2**

Short slide assembly of 1 x LWL25-900 rail and 2 x LWLC25-C carriages = **LWLC25-900C2**. Carriages and tracks are produced to suit each individual set.

+44 (0)1246 455500
+44 (0)1246 455522

ondrives

sales@ondrives.com
www.ondrives.com

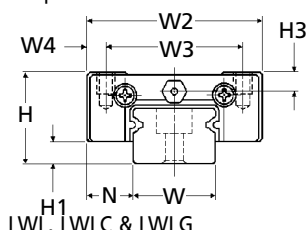
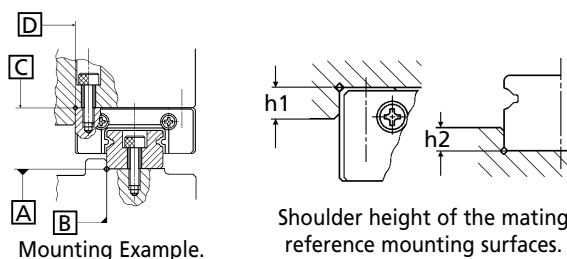
Product information updated 1st April 2011 and subject to change. Please contact Sales for the latest prices and availability.

LINEAR MOTION

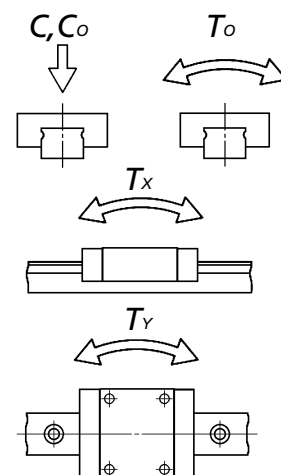
LWL
LWL-C
LWLC-C
LWLG-C

Precision Linear Slides - Stainless

L-Series Non Ball Retained - 2 Row 4 point Ball Contact



Model Number	Slide Unit Shoulder Height h1	Track Rail Shoulder Height h2
LWL20	5.0	4.0
LWL25	6.5	4.0



Figures shown in T_o column and upper figures of all T_x and T_y of each model number apply to one slide unit as illustrated right. The values shown below the single case figures for T_x and T_y are for two slide units in close contact.

Dim. variation of H for multiple assembly sets :
Std.: 0.030
High Precision (P): 0.020

	Part Number					
	LWL20-C	LWLC20-C	LWLG20-C	LWL25-C	LWLC25-C	LWLG25-C
Weight g						
Carriage (Slide Unit)	133.00	89.00	196.00	310.00	190.00	413.00
Track Rail per 100mm	156.00	156.00	156.00	243.00	243.00	243.00
Dimensions of Assembly mm						
H ± 0.020 (Std.) (P=±0.010)	20.00	20.00	20.00	25.00	25.00	25.00
H1	5.00	5.00	5.00	5.00	5.00	5.00
N ± 0.025 (Std.) (P=±0.015)	10.00	10.00	10.00	12.50	12.50	12.50
Dimensions of Slide Unit mm						
W2	40.00	40.00	40.00	48.00	48.00	48.00
W3	30.00	30.00	30.00	35.00	35.00	35.00
W4	5.00	5.00	5.00	6.50	6.50	6.50
L1	50.00	38.00	68.00	78.00	55.00	98.00
L2	25.00	-	30.00	35.00	-	40.00
L3	34.60	22.30	52.30	55.70	31.90	75.50
L4	55.00	42.00	72.00	89.00	65.00	108.00
M1 x Depth	M4 x 6 (2.5Nm)	M4 x 6 (2.5Nm)	M4 x 6 (2.5Nm)	M6 x 7 (8.5Nm)	M6 x 7 (8.5Nm)	M6 x 7 (8.5Nm)
H3	4.20	4.20	4.20	5.00	5.00	5.00
Dimensions of Track Rail mm						
W	20.00	20.00	20.00	23.00	23.00	23.00
H4	11.00	11.00	11.00	15.00	15.00	15.00
d3	6.00	6.00	6.00	7.00	7.00	7.00
d4	9.50	9.50	9.50	11.00	11.00	11.00
h	5.50	5.50	5.50	9.00	9.00	9.00
E	30.00	30.00	30.00	30.00	30.00	30.00
F	60.00	60.00	60.00	60.00	60.00	60.00
Track Rail Mounting Bolt	M5x14 (5Nm)	M5x14 (5Nm)	M5x14 (5Nm)	M6x16 (8.5Nm)	M6x16 (8.5Nm)	M6x16 (8.5Nm)
Basic Dynamic Load Rating						
C N	5830.00	4070.00	7350.00	11600.00	8000.00	14200.00
Basic Static Load Rating						
Co N	9420.00	5490.00	13300.00	19200.00	11000.00	26100.00
Static Rated Moment						
To Nm	96.10	56.00	136.00	232.00	132.00	315.00
Tx Nm	54.60	20.20	106.00	169.00	59.50	304.00
	291.00	138.00	549.00	919.00	387.00	1530.00
Ty Nm	45.80	16.90	88.90	142.00	49.90	255.00
	244.00	116.00	461.00	771.00	324.00	1290.00

Performance

Dim Variation Between Carriage Slides on Same Rail (Std. Grade): H = 0.015, N = 0.020

Dim Variation Between Carriage Slides on Same Rail (High Precision P Grade - P.O.A.): H = 0.007, N = 0.010

Parallelism in Operation Over: 100mm = 0.005mm, 250mm = 0.008mm, 500mm = 0.012mm, 1000mm = 0.018mm (A to C and D to B).

A higher tolerance grade is available. P.O.A.

Load Direction: If upward or downward, as table. If lateral, dynamic x 1.13 C, Static x 1.19 Co.

Dynamic Rating: From a group of the same slide units, 90% achieve a distance of 50 x 10³ metres.

For temperatures over 100°C (max. 120°C) we can supply special high temperature grease (clean room quality supplied in syringe) **CG2-SY : £31.80**

Preload is available (To) zero to minimal clearance, zero to minimal preload, (T1) 0.02 Co preload.

+44 (0)1246 455500
+44 (0)1246 455522

ondrives

sales@ondrives.com
www.ondrives.com

Product information updated 1st April 2011 and subject to change. Please contact Sales for the latest prices and availability.