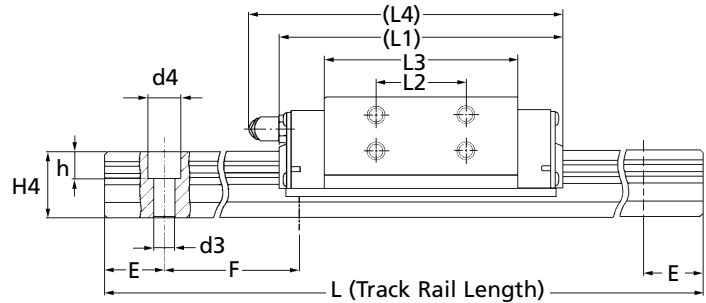
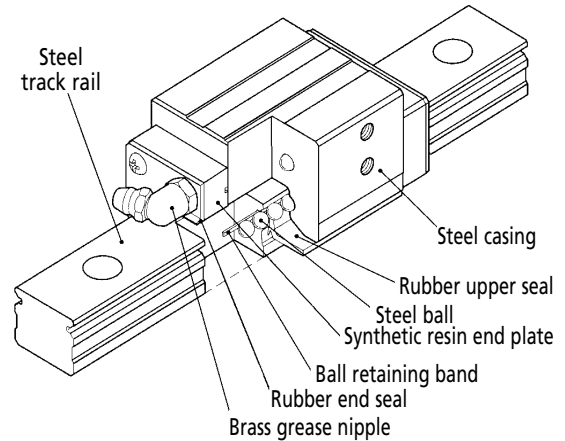
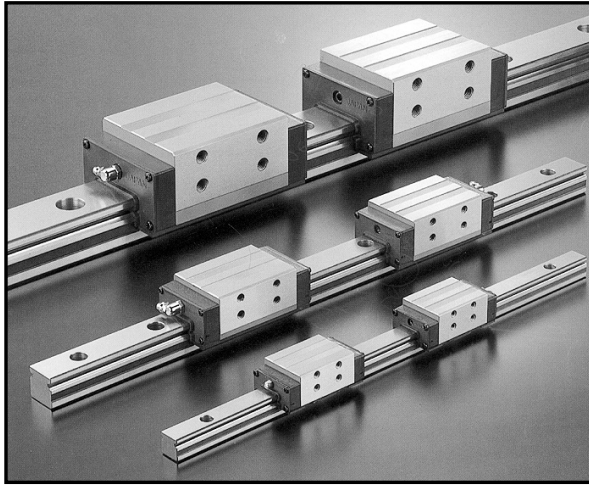


LWHY15

LINEAR MOTION

Precision Linear Slides - Steel

HY-Series (Ball Retained) *Side Mounting* - 2 Row 4 Point Ball

Part Number	L Track Rail Length	No. of Holes	Max. Length	Carriage (Side Unit)	Price Each
LWHY15-120	120	2	1500 Max length of butt joining rails 4200	-	£46.68
LWHY15-180	180	3		-	£63.29
LWHY15-240	240	4		-	£79.85
LWHY15-300	300	5		-	£96.40
LWHY15-360	360	6		-	£112.99
LWHY15-420	420	7		-	£129.55
LWHY15-480	480	8		-	£146.10
LWHY15-540	540	9		-	£162.65
LWHY15-600	600	10		-	£179.23
LWHY15-660	660	11		-	£195.86
LWHY15-720	720	12		-	£212.41
LWHY15-780	780	13		-	£228.97
LWHY15-840	840	14		-	£245.51
LWHY15-900	900	15		-	£262.14
LWHY15-960	960	16		-	£280.79
LWHY15-1020	1020	17		-	£299.48
LWHY15-1080	1080	18		-	£318.20
LWHY15-1140	1140	19		-	£336.89
LWHY15-1200	1200	20		-	£355.55
LWHY15-1260	1260	21		-	£381.06
LWHY15-1320	1320	22		-	£406.59
LWHY15-1380	1380	23		-	£432.04
LWHY15-1440	1440	24		-	£457.53
LWHY15-1500	1500	25		-	£483.06
LWHY15-C	-	-		-	Carriage

Material

Carbon Steel Hardened.

Performance

Max. Speed: Size 15 to 25 - 3m/sec. Size 45 - 2m/sec. Maximum Temperature: +100°C (Constant), +120° (Intermittent)

+44 (0)1246 455500
+44 (0)1246 455522

ondrives

sales@ondrives.com
www.ondrives.com

Product information updated 1st April 2011 and subject to change. Please contact Sales for the latest prices and availability.

LINEAR MOTION

LWHY15

Precision Linear Slides - Steel

HY-Series (Ball Retained) *Side Mounting* - 2 Row 4 Point Ball

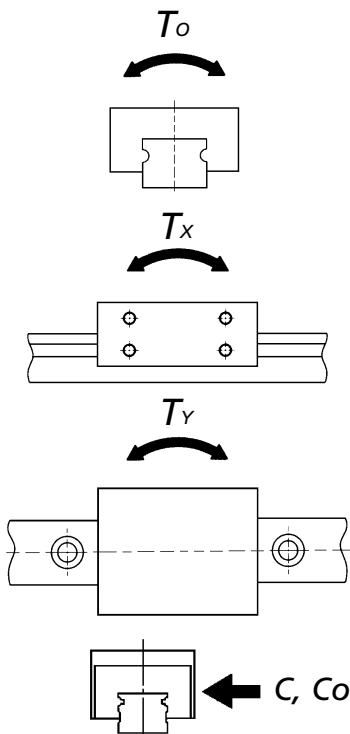
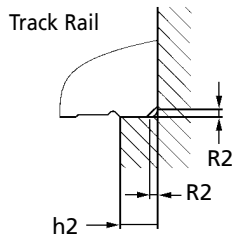
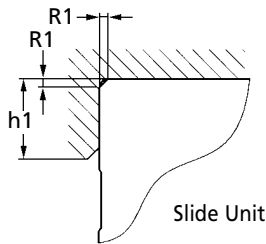
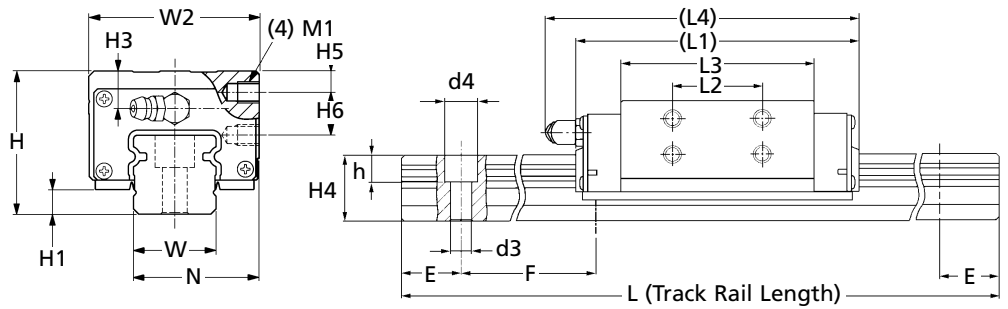
Performance

Dim Variation Between Carriage Slides on Same Rail: $H = 0.015$, $N = 0.020$

Parallelism in Operation Over: 500mm = 0.012mm, 1000mm = 0.018mm (A to C and D to B). Two higher tolerance grades are available. P.O.A.

Load Direction: See following tables.

Dynamic Rating: From a group of the same slide units, 90% achieve a distance of 50×10^3 metres.



	LWHY15
Weight kg	
Carriage (Slide Unit)	0.23
Track Rail per 100mm	1.47
Dimensions of Assembly mm	
H	28.00
H1	4.50
N	24.30
Dimensions of Slide Unit mm	
W2	34.00
L1	66.00
L2	18.00
L3	44.60
L4	69.00
M1 x Depth	M4 x 4
h1 Shoulder Height	0.50
R1 Corner Radius (max)	4.00
H3	8.50
H5	4.00
H6	9.00
Dimensions of Track Rail mm	
W	15.00
H4	15.00
d3	4.50
d4	8.00
h	6.00
h2 Shoulder Height	0.50
R2 Corner Radius (max)	3.00
E	30.00
F	60.00
Basic Dynamic Load Rating	
C N	9380.00
Basic Static Load Rating	
Co N	13900.00
Static Rated Moment	
To Nm	116.00
Tx Nm	99.20
	577.00
	99.20
Ty Nm	577.00

Figures shown in T_o column and upper figures of all T_x and T_y of each model number apply to one slide unit as illustrated above.

The values shown below the single case figures for T_x and T_y are for two slide units in close contact.

Other Info.

Characteristics: Easy handling (Ball retaining band structure, prevents balls falling out). Easy maintenance. Smooth operation. Low noise. High accuracy. Long life. High reliability.

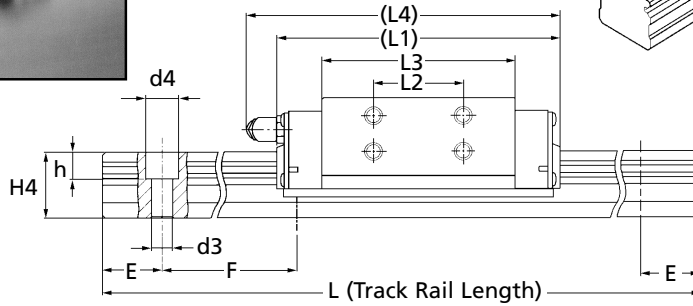
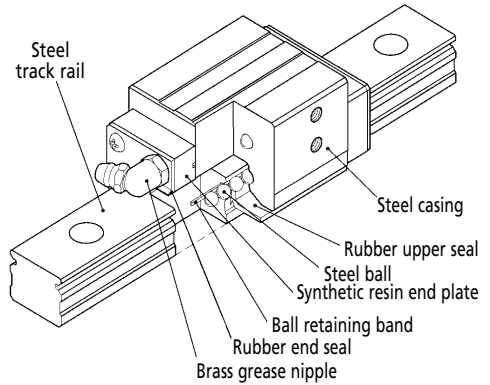
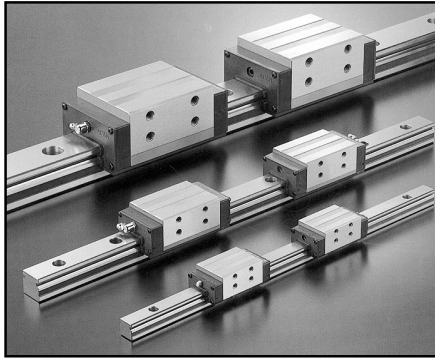
Lubrication: Every 6 months under general use. Every 3 months for daily use. Use a lithium-soap based grease. (Oil can be used). When ordering track rail, please order carriages required (1, 2, 3, etc.) per rail. For example: 1 x LWHY15-120 rail and 2 x LWHY15-C carriages = LWU15-120C2. Carriages and tracks are produced to suit each individual set.

For temperatures over 100°C we can supply special high temperature grease (200°C - supplied in syringe) CG2-SY : £31.80

LWHY20

LINEAR MOTION

Precision Linear Slides - Steel

HY-Series (Ball Retained) *Side Mounting* - 2 Row 4 Point Ball

Part Number	L Track Rail Length	No. of Holes	Max. Length	Carriage (Side Unit)	Price Each
LWHY20-120	120	2		-	£60.49
LWHY20-180	180	3		-	£79.51
LWHY20-240	240	4		-	£98.57
LWHY20-300	300	5		-	£117.61
LWHY20-360	360	6		-	£136.65
LWHY20-420	420	7		-	£155.67
LWHY20-480	480	8		-	£174.67
LWHY20-540	540	9		-	£193.71
LWHY20-600	600	10		-	£212.73
LWHY20-660	660	11		-	£231.79
LWHY20-720	720	12		-	£250.83
LWHY20-780	780	13		-	£269.88
LWHY20-840	840	14		-	£288.91
LWHY20-900	900	15		-	£307.96
LWHY20-960	960	16		-	£326.99
LWHY20-1020	1020	17		-	£345.98
LWHY20-1080	1080	18		-	£365.03
LWHY20-1140	1140	19		-	£384.06
LWHY20-1200	1200	20		-	£403.12
LWHY20-1260	1260	21		-	£422.13
LWHY20-1320	1320	22		-	£441.19
LWHY20-1380	1380	23		-	£460.22
LWHY20-1440	1440	24		-	£479.27
LWHY20-1500	1500	25		-	£498.23
LWHY20-1560	1560	26		-	£522.02
LWHY20-1620	1620	27		-	£545.87
LWHY20-1680	1680	28		-	£569.64
LWHY20-1740	1740	29		-	£593.46
LWHY20-1800	1800	30		-	£617.24
LWHY20-1860	1860	31		-	£641.04
LWHY20-1920	1920	32		-	£664.76
LWHY20-1980	1980	33		-	£688.63
LWHY20-C	-	-		Carriage	£149.07

1980
Max length of butt
joining rails 5640

Material

Carbon Steel Hardened.

Performance

Max. Speed: Size 15 to 25 - 3m/sec. Size 45 - 2m/sec. Maximum Temperature: +100°C (Constant), +120° (Intermittent)

+44 (0)1246 455500
+44 (0)1246 455522

ondrives

sales@ondrives.com
www.ondrives.com

Product information updated 1st April 2011 and subject to change. Please contact Sales for the latest prices and availability.

LINEAR MOTION

LWHY20

Precision Linear Slides - Steel

HY-Series (Ball Retained) *Side Mounting* - 2 Row 4 Point Ball

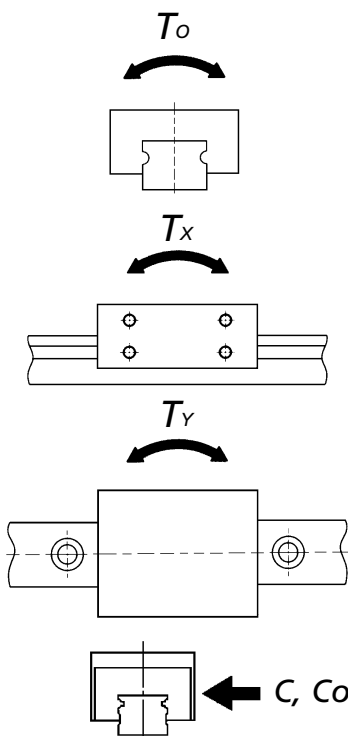
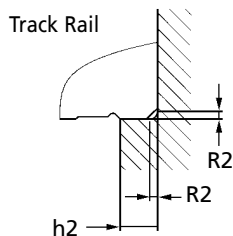
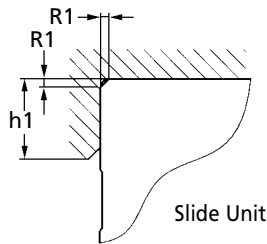
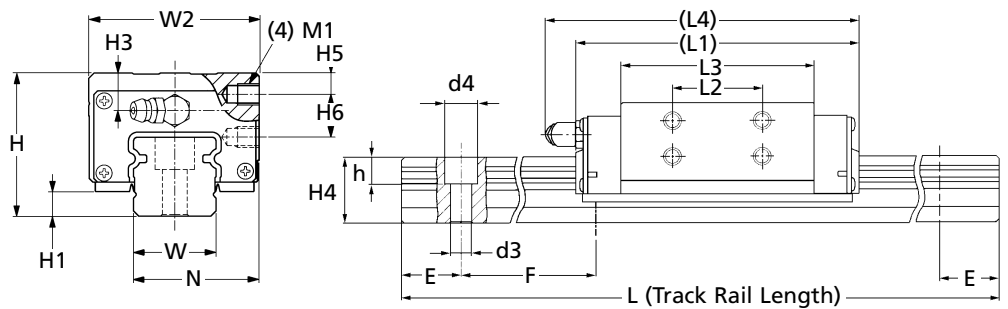
Performance

Dim Variation Between Carriage Slides on Same Rail: $H = 0.015$, $N = 0.020$

Parallelism in Operation Over: 500mm = 0.012mm, 1000mm = 0.018mm (A to C and D to B). Two higher tolerance grades are available. P.O.A.

Load Direction: See following tables.

Dynamic Rating: From a group of the same slide units, 90% achieve a distance of 50×10^3 metres.



	LWHY20
Weight kg	
Carriage (Slide Unit)	0.36
Track Rail per 100mm	2.56
Dimensions of Assembly mm	
H	30.00
H1	5.00
N	31.50
Dimensions of Slide Unit mm	
W2	43.70
L1	83.00
L2	25.00
L3	57.20
L4	95.00
M1 x Depth	M5 x 5
h1 Shoulder Height	0.50
R1 Corner Radius (max)	5.00
H3	5.50
H5	4.00
H6	10.00
Dimensions of Track Rail mm	
W	20.00
H4	18.00
d3	6.00
d4	9.50
h	8.50
h2 Shoulder Height	0.50
R2 Corner Radius (max)	3.00
E	30.00
F	60.00
Basic Dynamic Load Rating	
C N	14500.00
Basic Static Load Rating	
Co N	21900.00
Static Rated Moment	
To Nm	241.00
Tx Nm	202.00
	1130.00
	202.00
Ty Nm	1130.00

Figures shown in T_o column and upper figures of all T_x and T_y of each model number apply to one slide unit as illustrated above.

The values shown below the single case figures for T_x and T_y are for two slide units in close contact.

Other Info.

Characteristics: Easy handling (Ball retaining band structure, prevents balls falling out). Easy maintenance. Smooth operation. Low noise. High accuracy. Long life. High reliability.

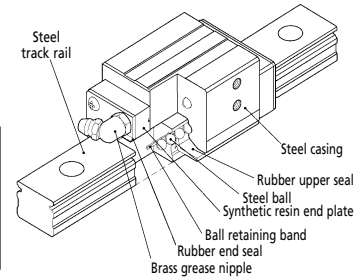
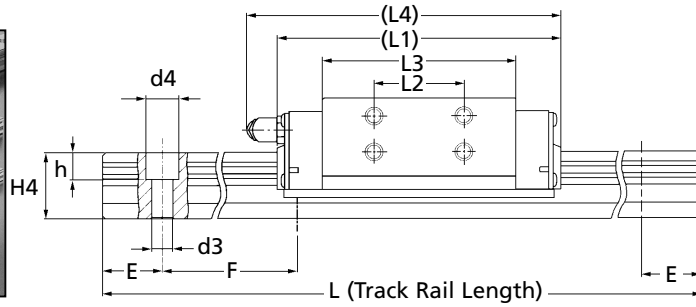
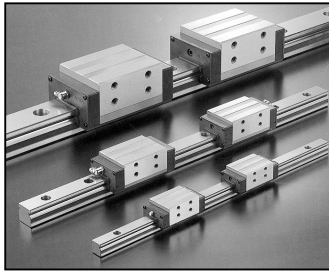
Lubrication: Every 6 months under general use. Every 3 months for daily use. Use a lithium-soap based grease. (Oil can be used). When ordering track rail, please order carriages required (1, 2, 3, etc.) per rail. For example: 1 x LWHY15-120 rail and 2 x LWHY15-C carriages = LWU15-120C2. Carriages and tracks are produced to suit each individual set.

For temperatures over 100°C we can supply special high temperature grease (200°C - supplied in syringe) CG2-SY : £31.80

LWHY25

LINEAR MOTION

Precision Linear Slides - Steel

HY-Series (Ball Retained) *Side Mounting* - 2 Row 4 Point Ball

Part Number	L Track Rail Length	No. of Holes	Max. Length	Carriage (Side Unit)	Price Each
LWHY25-120	120	2		-	£69.21
LWHY25-180	180	3		-	£89.37
LWHY25-240	240	4		-	£109.54
LWHY25-300	300	5		-	£129.62
LWHY25-360	360	6		-	£149.79
LWHY25-420	420	7		-	£169.95
LWHY25-480	480	8		-	£190.11
LWHY25-540	540	9		-	£210.22
LWHY25-600	600	10		-	£230.34
LWHY25-660	660	11		-	£250.56
LWHY25-720	720	12		-	£270.64
LWHY25-780	780	13		-	£290.76
LWHY25-840	840	14		-	£310.96
LWHY25-900	900	15		-	£331.08
LWHY25-960	960	16		-	£351.24
LWHY25-1020	1020	17		-	£371.38
LWHY25-1080	1080	18		-	£391.52
LWHY25-1140	1140	19		-	£411.69
LWHY25-1200	1200	20		-	£431.84
LWHY25-1260	1260	21		-	£451.96
LWHY25-1320	1320	22		-	£472.16
LWHY25-1380	1380	23		-	£492.24
LWHY25-1440	1440	24		-	£512.43
LWHY25-1500	1500	25		-	£532.53
LWHY25-1560	1560	26		-	£552.68
LWHY25-1620	1620	27		-	£572.85
LWHY25-1680	1680	28	3000 Max length of butt joining rails 8700	-	£592.97
LWHY25-1740	1740	29		-	£613.18
LWHY25-1800	1800	30		-	£633.31
LWHY25-1860	1860	31		-	£653.40
LWHY25-1920	1920	32		-	£673.58
LWHY25-1980	1980	33		-	£693.73
LWHY25-2040	2040	34		-	£713.87
LWHY25-2100	2100	35		-	£736.99
LWHY25-2160	2160	36		-	£760.03
LWHY25-2220	2220	37		-	£783.11
LWHY25-2280	2280	38		-	£806.21
LWHY25-2340	2340	39		-	£829.24
LWHY25-2400	2400	40		-	£852.34
LWHY25-2460	2460	41		-	£889.29
LWHY25-2520	2520	42		-	£926.23
LWHY25-2580	2580	43		-	£963.17
LWHY25-2640	2640	44		-	£1000.09
LWHY25-2700	2700	45		-	£1037.08
LWHY25-2760	2760	46		-	£1074.00
LWHY25-2820	2820	47		-	£1110.88
LWHY25-2880	2880	48		-	£1147.80
LWHY25-2940	2940	49		-	£1184.75
LWHY25-3000	3000	50		-	£1221.74
LWHY25-C	-	-		Carriage	£154.68

+44 (0)1246 455500
+44 (0)1246 455522

ondrives

sales@ondrives.com
www.ondrives.com

Product information updated 1st April 2011 and subject to change. Please contact Sales for the latest prices and availability.

LINEAR MOTION

LWHY25

Precision Linear Slides - Steel

HY-Series (Ball Retained) *Side Mounting* - 2 Row 4 Point Ball

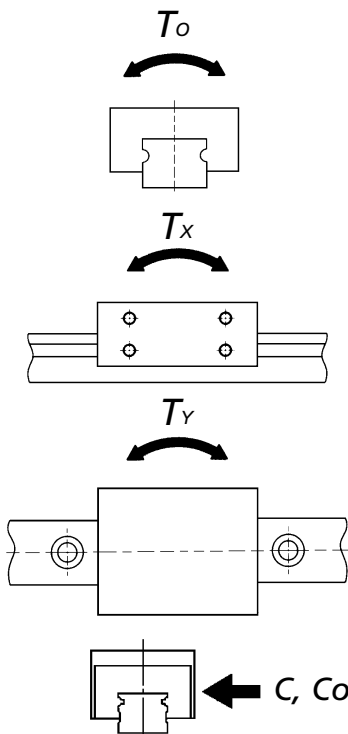
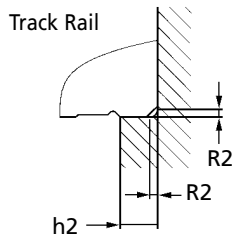
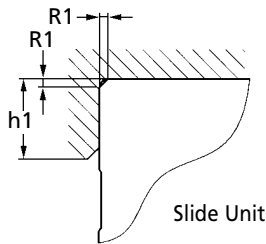
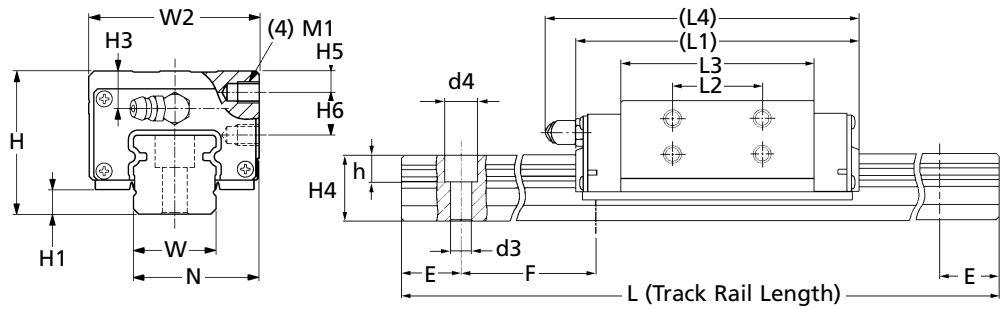
Performance

Dim Variation Between Carriage Slides on Same Rail: $H = 0.015$, $N = 0.020$

Parallelism in Operation Over: 500mm = 0.012mm, 1000mm = 0.018mm (A to C and D to B). Two higher tolerance grades are available. P.O.A.

Load Direction: See following tables.

Dynamic Rating: From a group of the same slide units, 90% achieve a distance of 50×10^3 metres.



	LWHY25
Weight kg	
Carriage (Slide Unit)	0.65
Track Rail per 100mm	3.50
Dimensions of Assembly mm	
H	40.00
H1	6.50
N	35.00
Dimensions of Slide Unit mm	
W2	47.70
L1	95.00
L2	30.00
L3	64.70
L4	106.00
M1 x Depth	M6 x 6
h1 Shoulder Height	1.00
R1 Corner Radius (max)	6.00
H3	10.50
H5	6.00
H6	12.00
Dimensions of Track Rail mm	
W	23.00
H4	22.00
d3	7.00
d4	11.00
h	9.00
h2 Shoulder Height	1.00
R2 Corner Radius (max)	4.00
E	30.00
F	60.00
Basic Dynamic Load Rating	
C N	20100.00
Basic Static Load Rating	
Co N	29800.00
Static Rated Moment	
To Nm	376.00
Tx Nm	320.00
	1750.00
	320.00
Ty Nm	1750.00

Figures shown in T_o column and upper figures of all T_x and T_y of each model number apply to one slide unit as illustrated above.

The values shown below the single case figures for T_x and T_y are for two slide units in close contact.

Other Info.

Characteristics: Easy handling (Ball retaining band structure, prevents balls falling out). Easy maintenance. Smooth operation. Low noise. High accuracy. Long life. High reliability.

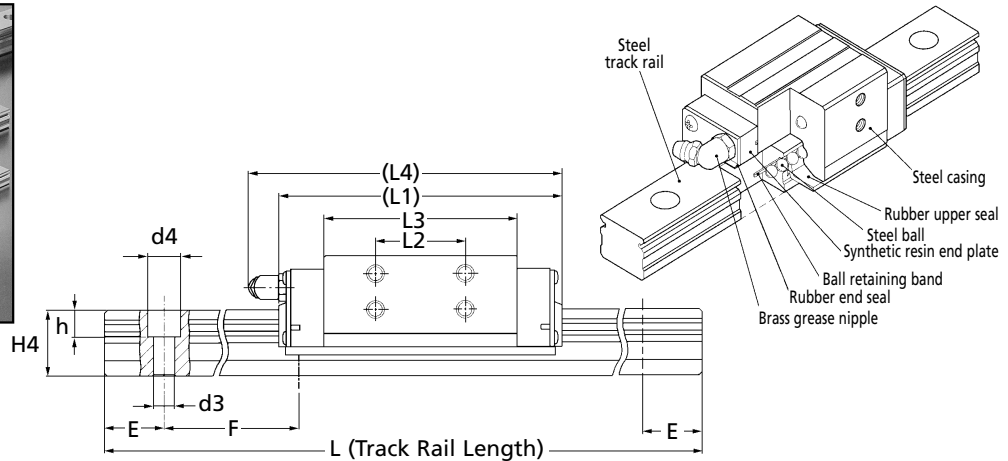
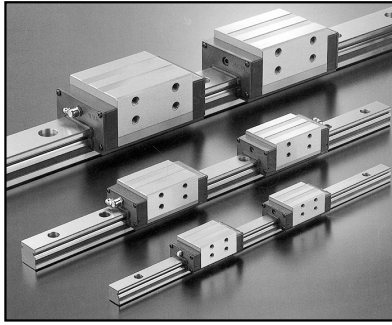
Lubrication: Every 6 months under general use. Every 3 months for daily use. Use a lithium-soap based grease. (Oil can be used). When ordering track rail, please order carriages required (1, 2, 3, etc.) per rail. For example: 1 x LWY15-120 rail and 2 x LWY15-C carriages = LWU15-120C2. Carriages and tracks are produced to suit each individual set.

For temperatures over 100°C we can supply special high temperature grease (200°C - supplied in syringe) CG2-SY : £31.80

LWHY30

LINEAR MOTION

Precision Linear Slides - Steel

HY-Series (Ball Retained) *Side Mounting* - 2 Row 4 Point Ball

Part Number	L Track Rail Length	No. of Holes	Max. Length	Carriage (Side Unit)	Price Each
LWHY30-160	160	2		-	£87.00
LWHY30-240	240	3		-	£116.84
LWHY30-320	320	4		-	£146.68
LWHY30-400	400	5		-	£176.52
LWHY30-480	480	6		-	£206.40
LWHY30-560	560	7		-	£236.26
LWHY30-640	640	8		-	£266.09
LWHY30-720	720	9		-	£295.94
LWHY30-800	800	10		-	£325.79
LWHY30-880	880	11		-	£355.62
LWHY30-960	960	12		-	£385.44
LWHY30-1040	1040	13		-	£415.30
LWHY30-1120	1120	14		-	£445.16
LWHY30-1200	1200	15		-	£475.02
LWHY30-1280	1280	16		-	£504.85
LWHY30-1360	1360	17		-	£535.46
LWHY30-1440	1440	18		-	£564.56
LWHY30-1520	1520	19		-	£594.44
LWHY30-1600	1600	20		-	£624.25
LWHY30-1680	1680	21	2960 Max length of butt joining rails 8480	-	£654.07
LWHY30-1760	1760	22		-	£683.91
LWHY30-1840	1840	23		-	£713.79
LWHY30-1920	1920	24		-	£743.62
LWHY30-2000	2000	25		-	£773.54
LWHY30-2080	2080	26		-	£803.37
LWHY30-2160	2160	27		-	£848.92
LWHY30-2240	2240	28		-	£894.55
LWHY30-2320	2320	29		-	£940.15
LWHY30-2400	2400	30		-	£985.80
LWHY30-2480	2480	31		-	£1031.36
LWHY30-2560	2560	32		-	£1076.97
LWHY30-2640	2640	33		-	£1122.56
LWHY30-2720	2720	34		-	£1168.14
LWHY30-2800	2800	35		-	£1213.73
LWHY30-2880	2880	36		-	£1259.39
LWHY30-2960	2960	37		-	£1304.97
LWHY30-C	-	-		Carriage	£183.20

Material

Carbon Steel Hardened.

Performance

Max. Speed: Size 15 to 25 - 3m/sec. Size 45 - 2m/sec. Maximum Temperature: +100°C (Constant), +120° (Intermittent)

+44 (0)1246 455500

+44 (0)1246 455522

ondrives

sales@ondrives.com

www.ondrives.com

Product information updated 1st April 2011 and subject to change. Please contact Sales for the latest prices and availability.

LINEAR MOTION

LWHY30

Precision Linear Slides - Steel

HY-Series (Ball Retained) *Side Mounting* - 2 Row 4 Point Ball

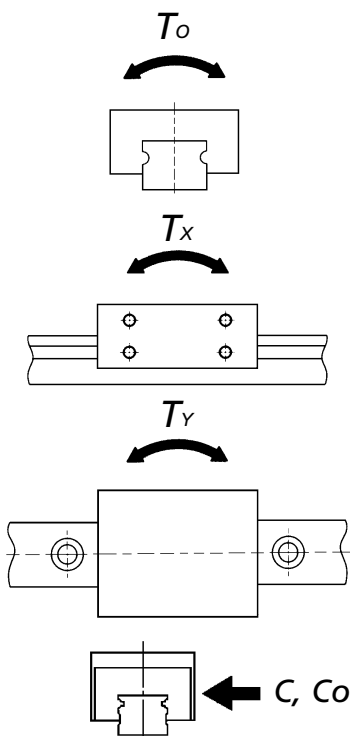
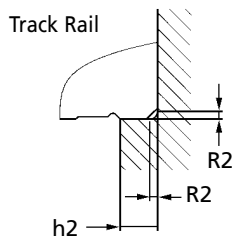
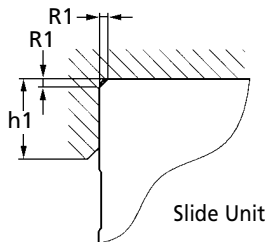
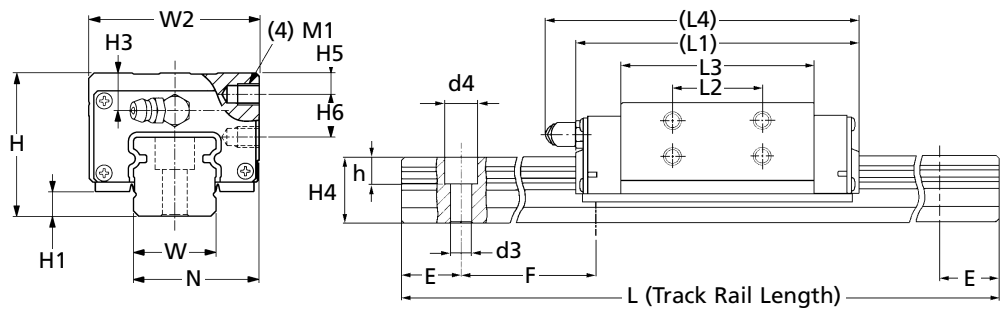
Performance

Dim Variation Between Carriage Slides on Same Rail: $H = 0.015$, $N = 0.020$

Parallelism in Operation Over: 500mm = 0.012mm, 1000mm = 0.018mm (A to C and D to B). Two higher tolerance grades are available. P.O.A.

Load Direction: See following tables.

Dynamic Rating: From a group of the same slide units, 90% achieve a distance of 50×10^3 metres.



	LWHY30
Weight kg	
Carriage (Slide Unit)	1.12
Track Rail per 100mm	4.82
Dimensions of Assembly mm	
H	45.00
H1	7.00
N	43.50
Dimensions of Slide Unit mm	
W2	59.70
L1	113.00
L2	40.00
L3	80.60
L4	124.00
M1 x Depth	M6 x 7
h1 Shoulder Height	1.00
R1 Corner Radius (max)	8.00
H3	11.00
H5	8.00
H6	14.00
Dimensions of Track Rail mm	
W	28.00
H4	25.00
d3	9.00
d4	14.00
h	12.00
h2 Shoulder Height	1.00
R2 Corner Radius (max)	5.00
E	40.00
F	80.00
Basic Dynamic Load Rating	
C N	28100.00
Basic Static Load Rating	
Co N	42200.00
Static Rated Moment	
To Nm	646.00
Tx Nm	556.00
	2930.00
	560.00
Ty Nm	2930.00

Figures shown in T_o column and upper figures of all T_x and T_y of each model number apply to one slide unit as illustrated above.

The values shown below the single case figures for T_x and T_y are for two slide units in close contact.

Other Info.

Characteristics: Easy handling (Ball retaining band structure, prevents balls falling out). Easy maintenance. Smooth operation. Low noise. High accuracy. Long life. High reliability.

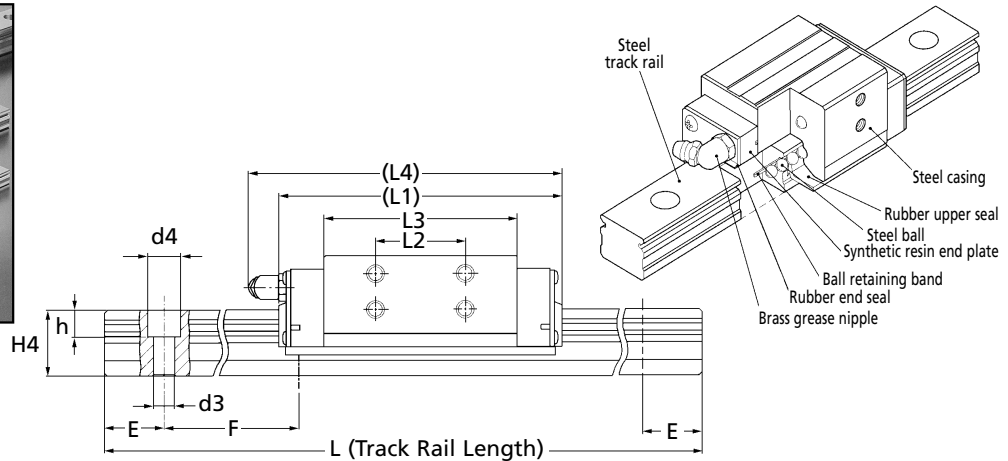
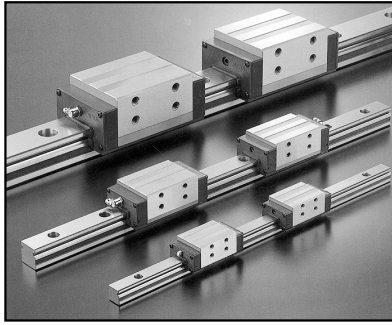
Lubrication: Every 6 months under general use. Every 3 months for daily use. Use a lithium-soap based grease. (Oil can be used). When ordering track rail, please order carriages required (1, 2, 3, etc.) per rail. For example: 1 x LWHY15-120 rail and 2 x LWHY15-C carriages = LWU15-120C2. Carriages and tracks are produced to suit each individual set.

For temperatures over 100°C we can supply special high temperature grease (200°C - supplied in syringe) CG2-SY : £31.80

LWHY35

LINEAR MOTION

Precision Linear Slides - Steel

HY-Series (Ball Retained) *Side Mounting* - 2 Row 4 Point Ball

Part Number	L Track Rail Length	No. of Holes	Max. Length	Carriage (Side Unit)	Price Each
LWHY35-160	160	2		-	£107.83
LWHY35-240	240	3		-	£141.42
LWHY35-320	320	4		-	£174.72
LWHY35-400	400	5		-	£208.05
LWHY35-480	480	6		-	£241.32
LWHY35-560	560	7		-	£274.65
LWHY35-640	640	8		-	£307.96
LWHY35-720	720	9		-	£341.30
LWHY35-800	800	10		-	£374.61
LWHY35-880	880	11		-	£407.91
LWHY35-960	960	12		-	£441.19
LWHY35-1040	1040	13		-	£474.52
LWHY35-1120	1120	14		-	£507.83
LWHY35-1200	1200	15		-	£541.12
LWHY35-1280	1280	16		-	£574.43
LWHY35-1360	1360	17		-	£607.72
LWHY35-1440	1440	18		-	£641.04
LWHY35-1520	1520	19		-	£674.35
LWHY35-1600	1600	20		-	£707.70
LWHY35-1680	1680	21	2960 Max length of butt joining rails 8480	-	£740.94
LWHY35-1760	1760	22		-	£774.30
LWHY35-1840	1840	23		-	£807.60
LWHY35-1920	1920	24		-	£840.93
LWHY35-2000	2000	25		-	£874.21
LWHY35-2080	2080	26		-	£907.52
LWHY35-2160	2160	27		-	£955.14
LWHY35-2240	2240	28		-	£1002.72
LWHY35-2320	2320	29		-	£1050.24
LWHY35-2400	2400	30		-	£1097.83
LWHY35-2480	2480	31		-	£1145.42
LWHY35-2560	2560	32		-	£1193.04
LWHY35-2640	2640	33		-	£1240.57
LWHY35-2720	2720	34		-	£1288.20
LWHY35-2800	2800	35		-	£1335.78
LWHY35-2880	2880	36		-	£1383.32
LWHY35-2960	2960	37		-	£1430.95
LWHY35-C	-	-		Carriage	£262.21

Material

Carbon Steel Hardened.

Performance

Max. Speed: Size 15 to 25 - 3m/sec. Size 45 - 2m/sec. Maximum Temperature: +100°C (Constant), +120° (Intermittent)

+44 (0)1246 455500

+44 (0)1246 455522

ondrives

sales@ondrives.com

www.ondrives.com

Product information updated 1st April 2011 and subject to change. Please contact Sales for the latest prices and availability.

LINEAR MOTION

LWHY35

Precision Linear Slides - Steel

HY-Series (Ball Retained) *Side Mounting* - 2 Row 4 Point Ball

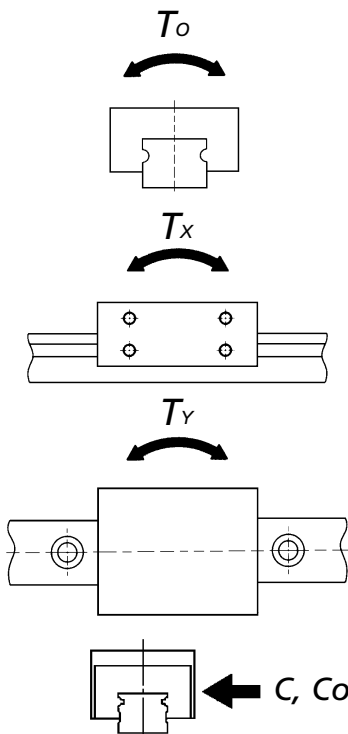
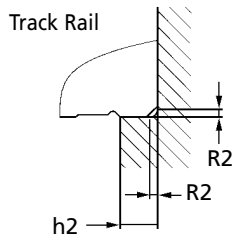
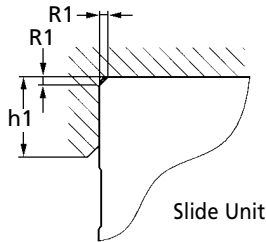
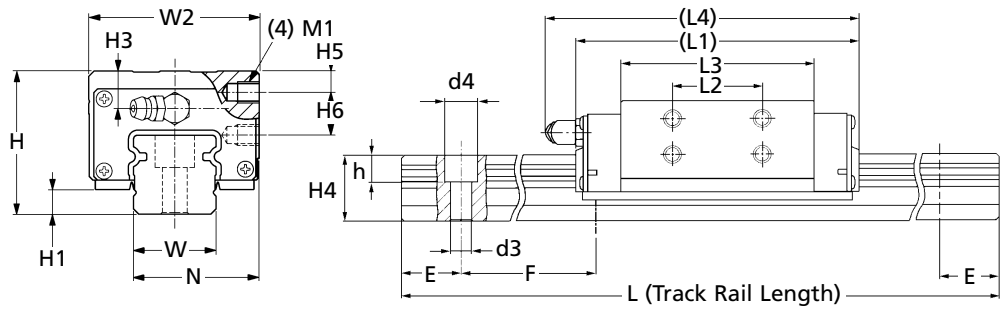
Performance

Dim Variation Between Carriage Slides on Same Rail: $H = 0.015$, $N = 0.020$

Parallelism in Operation Over: 500mm = 0.012mm, 1000mm = 0.018mm (A to C and D to B). Two higher tolerance grades are available. P.O.A.

Load Direction: See following tables.

Dynamic Rating: From a group of the same slide units, 90% achieve a distance of 50×10^3 metres.



	LWHY35
Weight kg	
Carriage (Slide Unit)	1.74
Track Rail per 100mm	6.85
Dimensions of Assembly mm	
H	55.00
H1	8.00
N	51.50
Dimensions of Slide Unit mm	
W2	69.70
L1	123.00
L2	43.00
L3	86.20
L4	135.00
M1 x Depth	M8 x 9
h1 Shoulder Height	1.50
R1 Corner Radius (max)	8.00
H3	17.00
H5	8.00
H6	18.00
Dimensions of Track Rail mm	
W	34.00
H4	28.00
d3	9.00
d4	14.00
h	12.00
h2 Shoulder Height	1.00
R2 Corner Radius (max)	6.00
E	40.00
F	80.00
Basic Dynamic Load Rating	
C N	31200.00
Basic Static Load Rating	
Co N	43500.00
Static Rated Moment	
To Nm	878.00
Tx Nm	865.00
	3600.00
	801.00
Ty Nm	3301.00

Figures shown in T_o column and upper figures of all T_x and T_y of each model number apply to one slide unit as illustrated above.

The values shown below the single case figures for T_x and T_y are for two slide units in close contact.

Other Info.

Characteristics: Easy handling (Ball retaining band structure, prevents balls falling out). Easy maintenance. Smooth operation. Low noise. High accuracy. Long life. High reliability.

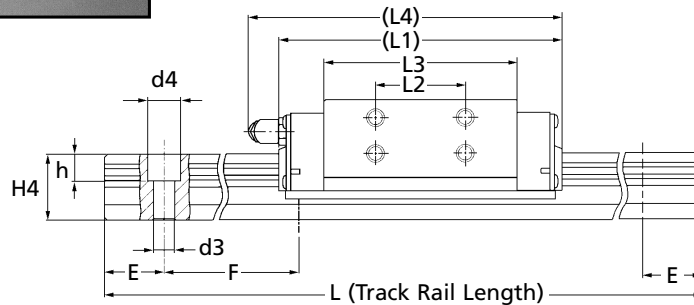
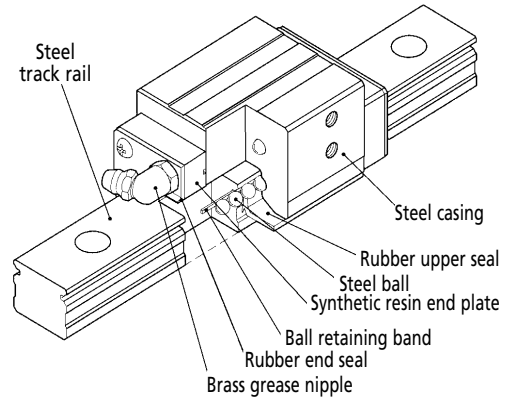
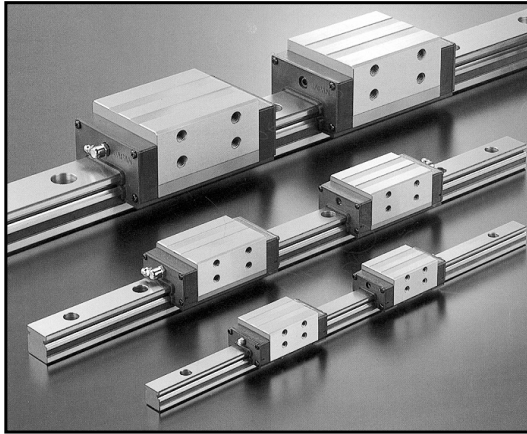
Lubrication: Every 6 months under general use. Every 3 months for daily use. Use a lithium-soap based grease. (Oil can be used). When ordering track rail, please order carriages required (1, 2, 3, etc.) per rail. For example: 1 x LWY15-120 rail and 2 x LWY15-C carriages = LWU15-120C2, Carriages and tracks are produced to suit each individual set.

For temperatures over 100°C we can supply special high temperature grease (200°C - supplied in syringe) CG2-SY : £31.80

LWHY45

LINEAR MOTION

Precision Linear Slides - Steel

HY-Series (Ball Retained) *Side Mounting* - 2 Row 4 Point Ball

Part Number	L Track Rail Length	No. of Holes	Max. Length	Carriage (Side Unit)	Price Each
LWHY45-210	210	2		-	£157.18
LWHY45-315	315	3		-	£203.91
LWHY45-420	420	4		-	£250.63
LWHY45-525	525	5		-	£297.33
LWHY45-630	630	6		-	£344.12
LWHY45-735	735	7		-	£390.85
LWHY45-840	840	8		-	£437.55
LWHY45-945	945	9		-	£484.27
LWHY45-1050	1050	10		-	£531.05
LWHY45-1155	1155	11		-	£577.77
LWHY45-1260	1260	12		-	£624.49
LWHY45-1365	1365	13		-	£671.21
LWHY45-1470	1470	14		-	£717.99
LWHY45-1575	1575	15		-	£764.71
LWHY45-1680	1680	16		-	£811.42
LWHY45-1785	1785	17	2940 Max length of butt joining rails 8295	-	£858.20
LWHY45-1890	1890	18		-	£904.93
LWHY45-1995	1995	19	-	-	£951.64
LWHY45-2100	2100	20	-	-	£998.36
LWHY45-2205	2205	21	-	-	£1053.62
LWHY45-2310	2310	22	-	-	£1108.85
LWHY45-2415	2415	23	-	-	£1164.08
LWHY45-2520	2520	24	-	-	£1219.31
LWHY45-2625	2625	25	-	-	£1274.53
LWHY45-2730	2730	26	-	-	£1329.75
LWHY45-2835	2835	27	-	-	£1385.02
LWHY45-2940	2940	28	-	-	£1440.26
LWHY45-C	-	-		Carriage	£308.98

Material

Carbon Steel Hardened.

Performance

Max. Speed: Size 15 to 25 - 3m/sec. Size 45 - 2m/sec. Maximum Temperature: +100°C (Constant), +120° (Intermittent)

+44 (0)1246 455500

+44 (0)1246 455522

ondrives

sales@ondrives.com

www.ondrives.com

Product information updated 1st April 2011 and subject to change. Please contact Sales for the latest prices and availability.

LINEAR MOTION

LWHY45

Precision Linear Slides - Steel

HY-Series (Ball Retained) *Side Mounting* - 2 Row 4 Point Ball

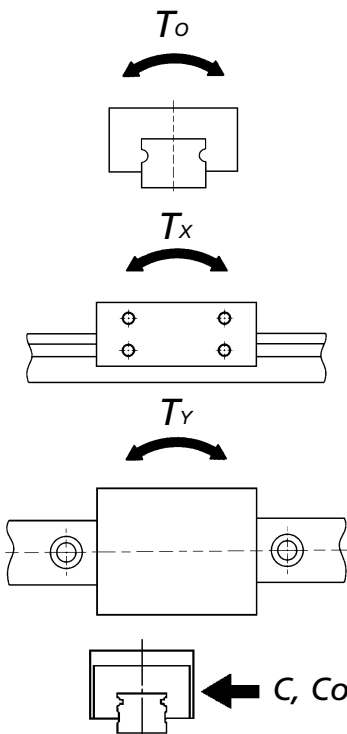
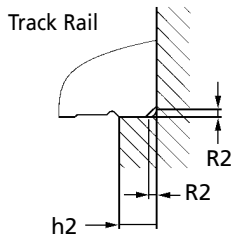
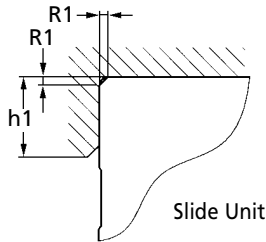
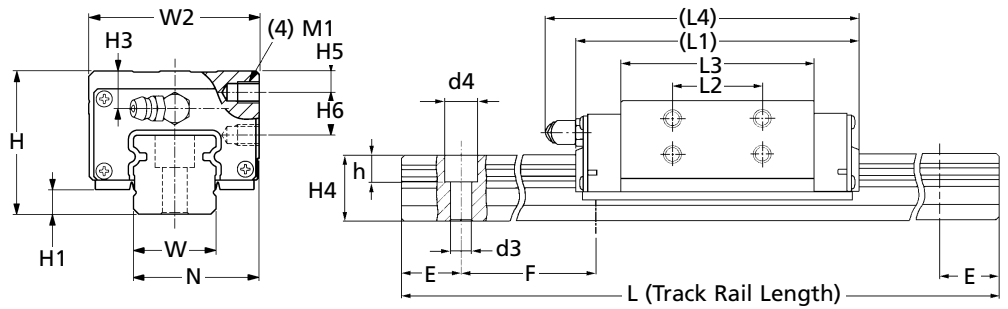
Performance

Dim Variation Between Carriage Slides on Same Rail: $H = 0.015$, $N = 0.020$

Parallelism in Operation Over: 500mm = 0.012mm, 1000mm = 0.018mm (A to C and D to B). Two higher tolerance grades are available. P.O.A.

Load Direction: See following tables.

Dynamic Rating: From a group of the same slide units, 90% achieve a distance of 50×10^3 metres.



	LWHY45
Weight kg	
Carriage (Slide Unit)	3.30
Track Rail per 100mm	10.70
Dimensions of Assembly mm	
H	70.00
H1	10.00
N	65.00
Dimensions of Slide Unit mm	
W2	85.70
L1	147.00
L2	55.00
L3	103.40
L4	158.00
M1 x Depth	M10 x 11
h1 Shoulder Height	1.50
R1 Corner Radius (max)	8.00
H3	23.00
H5	10.00
H6	22.00
Dimensions of Track Rail mm	
W	45.00
H4	34.00
d3	14.00
d4	20.00
h	17.00
h2 Shoulder Height	1.50
R2 Corner Radius (max)	7.00
E	52.50
F	105.00
Basic Dynamic Load Rating	
C N	47800.00
Basic Static Load Rating	
Co N	65000.00
Static Rated Moment	
To Nm	1720.00
Tx Nm	1200.00
	6420.00
	1100.00
Ty Nm	5900.00

Figures shown in T_o column and upper figures of all T_x and T_y of each model number apply to one slide unit as illustrated above.

The values shown below the single case figures for T_x and T_y are for two slide units in close contact.

Other Info.

Characteristics: Easy handling (Ball retaining band structure, prevents balls falling out). Easy maintenance. Smooth operation. Low noise. High accuracy. Long life. High reliability.

Lubrication: Every 6 months under general use. Every 3 months for daily use. Use a lithium-soap based grease. (Oil can be used). When ordering track rail, please order carriages required (1, 2, 3, etc.) per rail. For example: 1 x LWY15-120 rail and 2 x LWY15-C carriages = LWU15-120C2. Carriages and tracks are produced to suit each individual set.

For temperatures over 100°C we can supply special high temperature grease (200°C - supplied in syringe) CG2-SY : £31.80

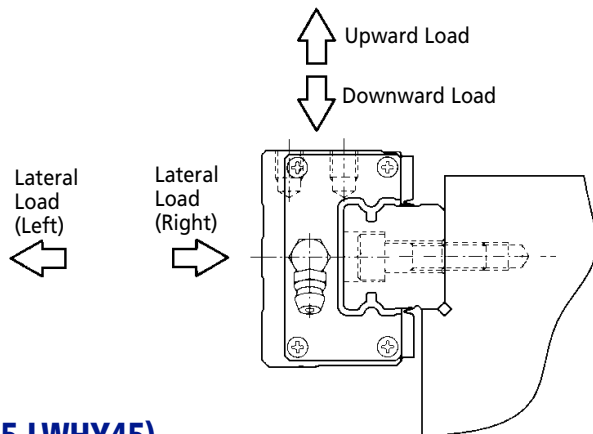
LINEAR MOTION

Precision Linear Slides - Steel

HY-Series (Ball Retained) *Side Mounting* - 2 Row 4 Point Ball

LOAD RATING

The load ratings shown in the dimensions table are downward load ratings. In LWHY15-LWHY30, the load ratings do not change by the load direction (Upward, downward and lateral). But in LWHY35-LWHY45 the load ratings change by the load direction. Lateral load ratings can be obtained by multiplying the load-directional factors shown in the table below.



LOAD DIRECTION FACTOR (LWHY35-LWHY45)

Load Direction	Load Ratings	Basic Dynamic Load Rating	Basic Static Load Rating
Upward Load		C	Co
Downward Load		C	Co
Lateral Load (Right)		1.19C	1.28Co
Lateral Load (Left)		1.05C	1.07Co

MOUNTING

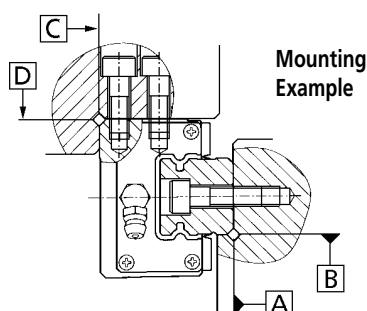
Multiple slide units mounted in close distance

When using multiple slide units in close distance to each other, the actual load may be greater than the calculated load depending on the accuracy of the mounting surface and the reference mounting surface of the machine. It is suggested in such cases to assume a greater actual load into consideration.

Example of mounting in general application

As shown in the mounting example the reference mounting surfaces B and D and the mounting surfaces A and C are precisely finished by grinding. Therefore, a stable linear motion of high accuracy will be obtained by precise finishing of the mating reference mounting surfaces and mounting surfaces of the machine and correct mounting on those surfaces.

It is recommended to make a relieved fillet at the corner of the mating reference mounting surface as shown in the mounting example. However, the corner radius somewhat smaller than R1 and R2 values in the following table can also be used. The recommended shoulder heights of the mating reference mounting surfaces are also given in the table.



Bolt Size	Tightening Torque kgf•cm
M4 x 0.70	40
M5 x 0.80	80
M6 x 1.00	130
M8 x 1.25	320
M10 x 1.50	640
M12 x 1.75	1100

Mounting bolt tightening torque

Table 5 shows the mounting bolt tightening torque for general application. If vibration and/or shocks are present or moment loads are applied, tightening torque 1.5 times the values in the table is recommended.

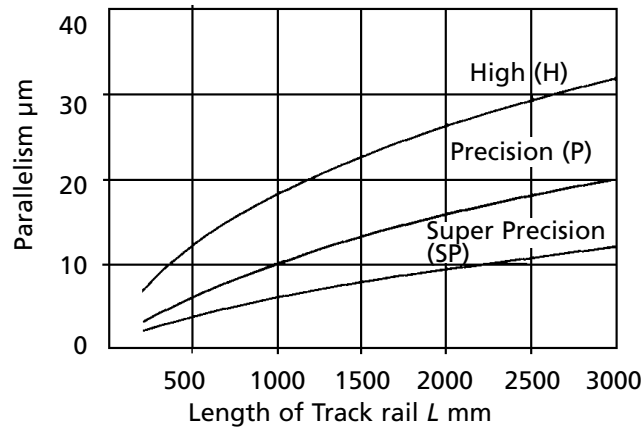
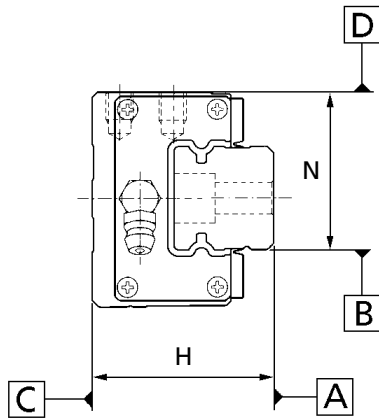
Operating temperature

The maximum operating temperature is 120°C and a continuous operation is possible at temperatures up to 100°C. When the temperature of linear guideways in operation exceeds 100°C, please consult our technical department.

LINEAR MOTION

Precision Linear Slides - Steel

HY-Series (Ball Retained) *Side Mounting* - 2 Row 4 Point Ball



ACCURACY

Accuracies for Linear Ways HY series are shown in the above graph and the table below.

Item	Classification (Symbol)		
	(Std.) High (H)	Precision (P)	Super Precision (SP)
Dim. H tolerance	±0.140	±0.020	±0.010
Dim. N tolerance	±0.050	±0.125	±0.050
Dim. variation of H (1)	0.015	0.007	0.005
Dim. variation of N (2)	0.020	±0.010	0.007
Parallelism in operation of C to A	See Preload table below		
Parallelism in operation of D to B	See Preload table below		

Note: (1) Dimensional variation of dimension H means the size variation between slide units mounted on the same track rail when the dimension H is measured at the specified position of the track rail.

(2) Dimensional variation of dimension N means the size variation between slide units mounted on the same track rail when the dimension N is measured at the specified position of track rail.

PRELOAD

Average amount of preload for Linear Way HY series are shown below.

Preload Class	Symbol	Preload amount (kgf)	Application
Standard Preload	(no symbol)	0 (1)	• Smooth and precise motion
Light Preload	T1	0.02 Co	• Minimum vibration • Evenly balanced load. • Smooth and precise motion
Medium Preload	T2	0.05 Co	• Medium vibration • Medium overhung load.
Heavy Preload	T3	0.08 Co	• Vibration and/or shocks • Overhung load. • Heavy cutting.

Note: (1) Zero or minimal amount of preload. **Remark:** Co means basic static load rating.

LINEAR MOTION