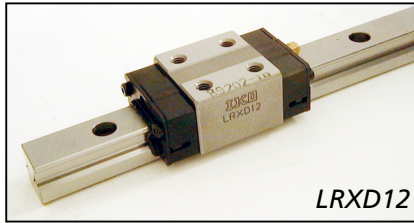


LRX12
LRXD12

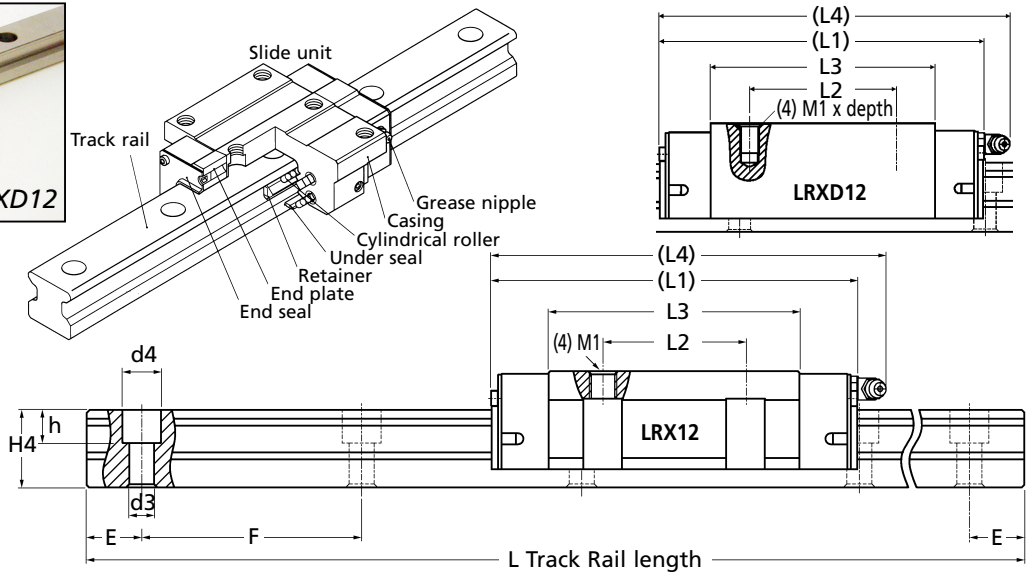
LINEAR MOTION

Precision Linear Roller Way - Steel

Super X Series - Roller Retained - 4 Rows of Cylindrical Rollers



LRXD12



Performance

- High load capacity
- High rigidity
- High reliability
- Smooth motion
- Good load balance
- High accuracy

Part Number	L Track Rail Length	No. of Holes	Carriage (Side Unit)	Price Each
LRX12-80	80	2	-	£21.24
LRX12-120	120	3	-	£31.82
LRX12-160	160	4	-	£42.48
LRX12-200	200	5	-	£53.08
LRX12-240	240	6	-	£63.68
LRX12-280	280	7	-	£74.32
LRX12-320	320	8	-	£84.90
LRX12-360	360	9	-	£95.50
LRX12-400	400	10	-	£106.13
LRX12-440	440	11	-	£116.81
LRX12-480	480	12	-	£127.45
LRX12-520	520	13	-	£138.01
LRX12-560	560	14	-	£148.64
LRX12-600	600	15	-	£159.24
LRX12-640	640	16	-	£169.85
LRX12-720	720	18	-	£191.07
LRX12-800	800	20	-	£212.33
LRX12-920	920	23	-	£244.15
LRX12-1000	1000	25	-	£265.41
LRX12-1120	1120	28	-	£297.24
LRX12-1200	1200	30	-	£318.50
LRX12-1320	1320	33	-	£350.35
LRX12-1400	1400	35	-	£371.58
LRX12-1480	1480	37	-	£392.83
LRX12-C	-	-	Flanged Slide mounted from upper or lower	£198.81
LRXD12-C	-	-	Standard Block Slide mounted from upper only	£198.81

Material

Rail Carriage & Rollers: Carbon Steel Hardened End Retaining Plates: Synthetic Resin End Seals: Rubber Grease Nipple: Brass

Performance

Max. Speed: 3m/sec. Max. Rail Length: 1480mm (butt jointing available for longer lengths P.O.A.) Max. Temp.: +100°C (Constant), +120°C (Intermittent)

Other Info.

Stainless version available LRXD12-SL style carriage. P.O.A. Max Length: 1000mm

Characteristics: High rigidity due to the large number of rollers and smaller elastic deformation than the ball equivalent. High load capacity. Superior vibration characteristic. Long life and high accuracy. Well-balanced structure. Smooth and quiet motion.

Lubrication: Every 6 months under general use. Every 3 months for daily use. Use a lithium-soap based grease. (Oil can be used).

When ordering track rail, please order carriages required (1, 2, 3, etc.) per rail.

For example: 1 x LRX12-480 and 2 x LRXD12-C (Carriages and tracks are produced to suit each individual set)

+44 (0)1246 455500
+44 (0)1246 455522

ondrives

sales@ondrives.com
www.ondrives.com

Product information updated 1st April 2011 and subject to change. Please contact Sales for the latest prices and availability.

LINEAR MOTION

LRX12
LRXD12

Precision Linear Roller Way - Steel

Super X Series - Roller Retained - 4 Rows of Cylindrical Rollers

Performance

Dimension Variation Between Carriage Slides on Same Rail:

H = 0.015, N = 0.020

Parallelism in Operation Over:

500mm = 0.012mm

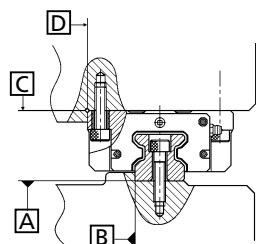
1000mm = 0.016mm

3000mm = 0.025mm

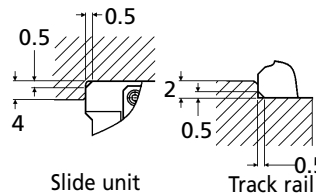
(A to C and D to B).

3 higher accuracy grades available.

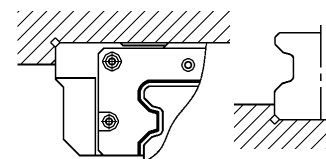
P.O.A.



Mounting Example

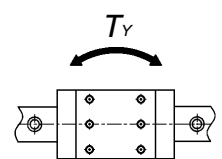
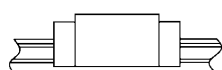
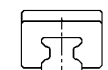
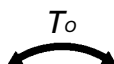
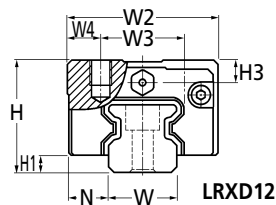
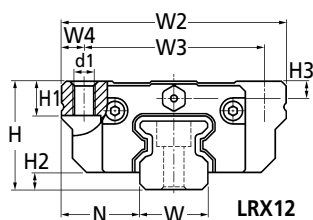


Slide unit
Track rail
Corner radius and shoulder heights of the mating reference mounting surfaces.



Relieved fillet at the corner of the mating reference mounting surfaces.

All faces of track are ground.



Figures shown in T_o column and upper figures of all T_x and T_y of each model number apply to one slide unit as illustrated above.

The higher figures below are for two slides in close contact on the same rail.

Extras

Preload available:

$T_1 = 0.02 C_o$

$T_2 = 0.05 C_o$

$T_3 = 0.08 C_o$

or zero - depends on stocking and availability.

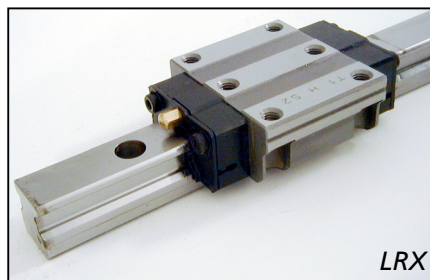
	Part Number	
	LRX-12	LRXD-12
Dimensions of Slide Unit mm	FLANGED	BLOCK
W2	40.00	27.00
W3	32.00	15.00
W4	4.00	6.00
L1	47.00	47.00
L2	15.00	15.00
L3	25.30	25.30
L4	50.00	50.00
d1	3.40	-
M1	M4	M4 x 4.5
H2	6.00	-
H3	3.00	4.00
Weight (kg)	0.092	0.072
Dimensions of Assembly mm		
H ± 0.04	19.00	20.00
H1	3.00	3.00
N ± 0.05	14.00	7.50
M1 Bolt Tightening Torque (Nm)	4.00	4.00
Dimensions of Track Rail mm		
W	12.00	12.00
H4	12.00	12.00
d3	3.50	3.50
d4	6.00	6.00
h	4.50	4.50
E	20.00	20.00
F	40.00	40.00
Weight kg		
Track Rail per 100mm		0.92
Track Rail Mounting Bolt		M3 x 12
Bolt Tightening Torque (Nm)		1.70
Basic Dynamic Load Rating		
C N		4830.00
Basic Static Load Rating		
C ₀ N		10300.00
Static Rated Moment		
T _o Nm		78.40
T _x Nm T _y Nm		45.00
		342.00

LRX15
LRXD15
LRXDC15

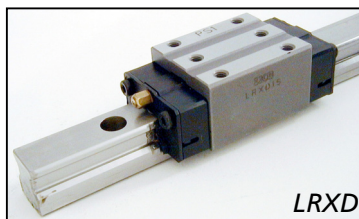
LINEAR MOTION

Precision Linear Roller Way - Steel

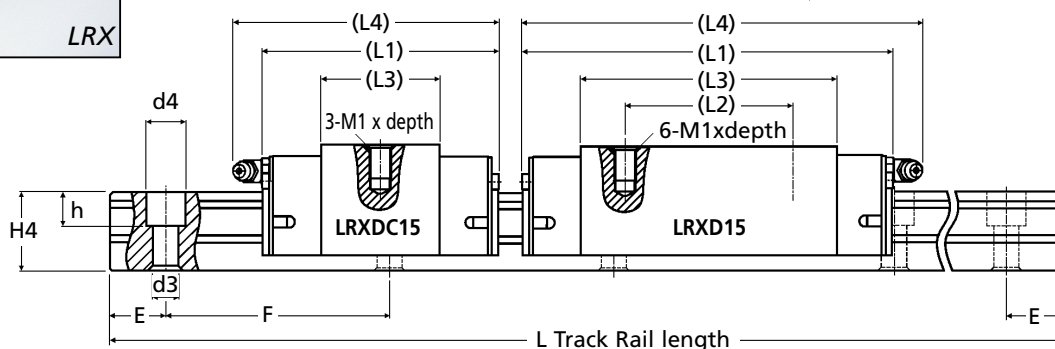
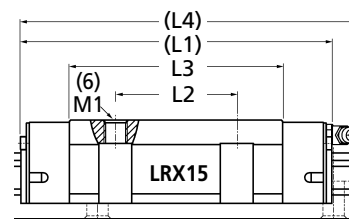
Super X Series - Roller Retained - 4 Rows of Cylindrical Rollers



LRX



LRXD



Performance

- High load capacity
- High rigidity
- High reliability
- Smooth motion
- Good load balance
- High accuracy

Part Number	L Track Rail Length	No. of Holes	Carriage (Side Unit)	Price Each
LRX15-180	180	3	-	£56.52
LRX15-240	240	4	-	£71.30
LRX15-300	300	5	-	£71.30
LRX15-360	360	6	-	£100.96
LRX15-420	420	7	-	£100.96
LRX15-480	480	8	-	£130.48
LRX15-540	540	9	-	£146.80
LRX15-600	600	10	-	£163.12
LRX15-660	660	11	-	£174.90
LRX15-720	720	12	-	£190.82
LRX15-780	780	13	-	£206.72
LRX15-840	840	14	-	£222.63
LRX15-900	900	15	-	£238.56
LRX15-960	960	16	-	£254.45
LRX15-1020	1020	17	-	£270.36
LRX15-1080	1080	18	-	£286.26
LRX15-1140	1140	19	-	£302.14
LRX15-1200	1200	20	-	£318.06
LRX15-1260	1260	21	-	£333.97
LRX15-1320	1320	22	-	£349.89
LRX15-1380	1380	23	-	£365.78
LRX15-1440	1440	24	-	£381.68
LRX15-1500	1500	25	-	£394.72
LRX15-C			Flanged Slide mounted from upper or lower	£194.63
LRXD15-C			Standard Block Slide mounted from upper only	£194.63
LRXDC15-C			Short Block Slide mounted from upper only	£162.38

Material

Rail Carriage & Rollers: Carbon Steel Hardened End Retaining Plates: Synthetic Resin End Seals: Rubber Grease Nipple: Brass

Performance

Maximum Speed: 3m/sec. Maximum Rail Length: 1500mm Maximum Temperature: +100°C (Constant), +120°C (Intermittent)

Other Info.

Stainless version available LRXDC15-SL, LRX15D15-SL style carriage. P.O.A. Max Length: 1200mm

Characteristics: High rigidity due to the large number of rollers and smaller elastic deformation than the ball equivalent. High load capacity. Superior vibration characteristic. Long life and high accuracy. Well-balanced structure. Smooth and quiet motion.

Lubrication: Every 6 months under general use. Every 3 months for daily use. Use a lithium-soap based grease. (Oil can be used).

When ordering track rail, please order carriages required (1, 2, 3, etc.) per rail.

For example: 1 x LRX15-480 and 2 x LRXD15-C (Carriages and tracks are produced to suit each individual set)

+44 (0)1246 455500
+44 (0)1246 455522

ondrives

sales@ondrives.com
www.ondrives.com

Product information updated 1st April 2011 and subject to change. Please contact Sales for the latest prices and availability.

LINEAR MOTION

LRX15
LRXD15
LRXDC15

Precision Linear Roller Way - Steel

Super X Series - Roller Retained - 4 Rows of Cylindrical Rollers

Performance

Dimension Variation Between Carriage Slides on Same Rail:

H = 0.015, N = 0.020

Parallelism in Operation Over:

500mm = 0.012mm

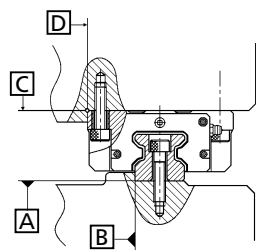
1000mm = 0.016mm

3000mm = 0.025mm

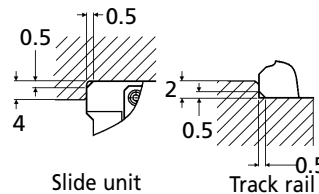
(A to C and D to B).

3 higher accuracy grades available.

P.O.A.



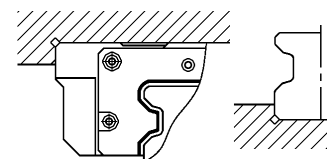
Mounting Example



Slide unit

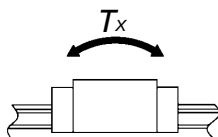
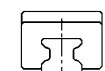
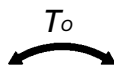
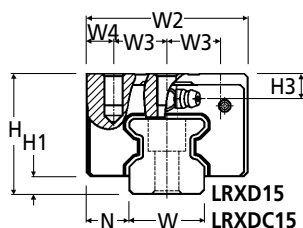
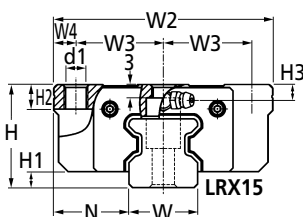
Track rail

Corner radius and shoulder heights of the mating reference mounting surfaces.



Relieved fillet at the corner of the mating reference mounting surfaces.

All faces of track are ground.



Figures shown in T_o column and upper figures of all T_x and T_y of each model number apply to one slide unit as illustrated above.

The higher figures below are for two slides in close contact on the same rail.

Extras

Preload available:

$T_1 = 0.02 C_o$

$T_2 = 0.05 C_o$

$T_3 = 0.08 C_o$

or zero - depends on stocking and availability.

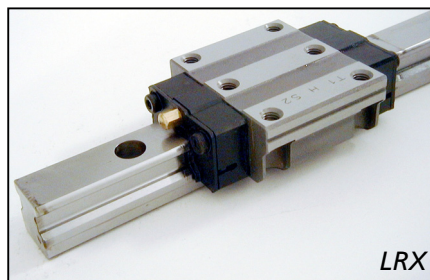
	Part Number		
	LRX-15	LRXD-15	LRXDC-15
Dimensions of Slide Unit mm	FLANGED	STD. BLOCK	SHORT BLOCK
W2	47.00	34.00	34.00
W3	19.00	13.00	13.00
W4	4.50	4.00	4.00
L1	68.00	68.00	52.00
L2	30.00	26.00	-
L3	40.00	40.30	24.00
L4	71.00	71.00	55.00
d1	4.40	-	-
M1	M5	M4 x 8	M4 x 8
H2	7.00	-	-
H3	3.50	7.50	7.50
Weight (kg)	0.20	0.19	0.13
Dimensions of Assembly mm			
H ± 0.04	24.00	28.00	28.00
H1	4.00	4.00	4.00
N ± 0.05	16.00	9.50	9.50
M1 Bolt Tightening Torque (Nm)	7.90	4.00	4.00
Dimensions of Track Rail mm			
W	15.00	15.00	15.00
H4	16.50	16.50	16.50
d3	4.50	4.50	4.50
d4	8.00	8.00	8.00
h	6.00	6.00	6.00
E	30.00	30.00	30.00
F	60.00	60.00	60.00
Weight kg			
Track Rail per 100mm	1.65	1.65	1.65
Track Rail Mounting Bolt Bolt Tightening Torque (Nm)	M4 x 16 4.00	M4 x 16 4.00	M4 x 16 4.00
Basic Dynamic Load Rating			
C N	9410.00	9410.00	6320.00
Basic Static Load Rating			
C ₀ N	19900.00	19900.00	11900.00
Static Rated Moment			
T _o Nm	187.00	187.00	112.00
T _x Nm T _y Nm	135.00	135.00	50.40
	938.00	938.00	454.00

LRX20
LRXD20
LRXDC20

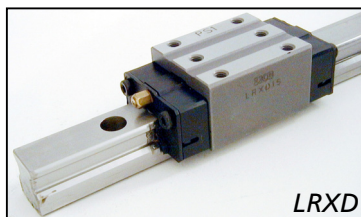
LINEAR MOTION

Precision Linear Roller Way - Steel

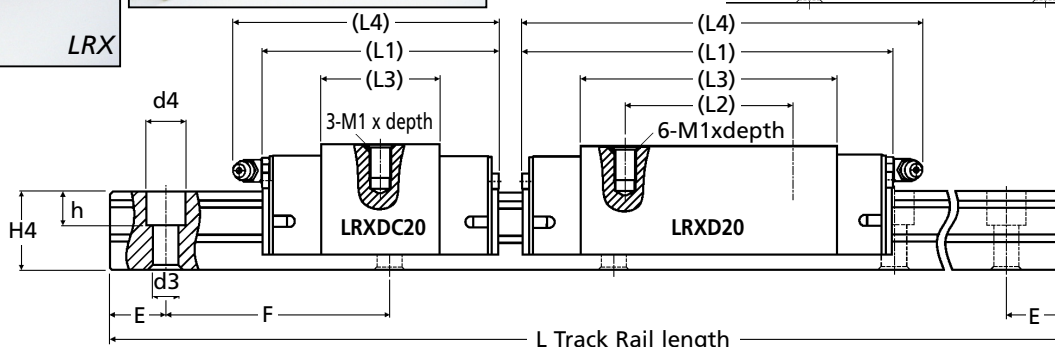
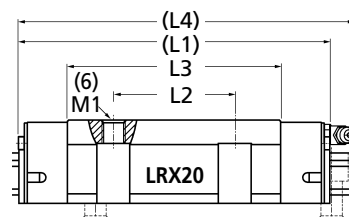
Super X Series - Roller Retained - 4 Rows of Cylindrical Rollers



LRX



LRXD



Performance

- High load capacity
- High rigidity
- High reliability
- Smooth motion
- Good load balance
- High accuracy

Part Number	L Track Rail Length	No. of Holes	Carriage (Side Unit)	Price Each
LRX20-180	180	3	-	£69.13
LRX20-240	240	4	-	£86.48
LRX20-300	300	5	-	£108.11
LRX20-360	360	6	-	£119.86
LRX20-420	420	7	-	£141.38
LRX20-480	480	8	-	£153.27
LRX20-540	540	9	-	£172.44
LRX20-600	600	10	-	£191.60
LRX20-660	660	11	-	£203.36
LRX20-720	720	12	-	£221.84
LRX20-780	780	13	-	£240.35
LRX20-840	840	14	-	£253.43
LRX20-900	900	15	-	£271.54
LRX20-960	960	16	-	£289.65
LRX20-1020	1020	17	-	£303.41
LRX20-1080	1080	18	-	£321.25
LRX20-1140	1140	19	-	£339.11
LRX20-1200	1200	20	-	£353.61
LRX20-1320	1320	22	-	£392.64
LRX20-1500	1500	25	-	£437.05
LRX20-1620	1620	27	-	£472.01
LRX20-1800	1800	30	-	£524.46
LRX20-1980	1980	33	-	£576.88
LRX20-C	-	-	Flanged Slide mounted from upper only	£219.77
LRXD20-C	-	-	Standard Block Slide mounted from upper only	£209.04
LRXDC20-C	-	-	Short Block Slide mounted from upper only	£176.79

Material

Rail Carriage & Rollers: Carbon Steel Hardened End Retaining Plates: Synthetic Resin End Seals: Rubber Grease Nipple: Brass

Performance

Maximum Speed: 3m/sec. Maximum Rail Length: 1980mm Maximum Temperature: +100°C (Constant), +120°C (Intermittent)

Other Info.

Stainless version available LRXDC20-SL, LRXD20-SL style carriage. P.O.A. Max Length: 1200mm

Characteristics: High rigidity due to the large number of rollers and smaller elastic deformation than the ball equivalent. High load capacity. Superior vibration characteristic. Long life and high accuracy. Well-balanced structure. Smooth and quiet motion.

Lubrication: Every 6 months under general use. Every 3 months for daily use. Use a lithium-soap based grease. (Oil can be used).

When ordering track rail, please order carriages required (1, 2, 3, etc.) per rail.

For example: 1 x LRX20-480 and 2 x LRXD20-C (Carriages and tracks are produced to suit each individual set)

+44 (0)1246 455500
+44 (0)1246 455522

ondrives

sales@ondrives.com
www.ondrives.com

Product information updated 1st April 2011 and subject to change. Please contact Sales for the latest prices and availability.

LINEAR MOTION

LRX20
LRXD20
LRXDC20

Precision Linear Roller Way - Steel

Super X Series - Roller Retained - 4 Rows of Cylindrical Rollers

Performance

Dimension Variation Between Carriage Slides on Same Rail:

H = 0.015, N = 0.020

Parallelism in Operation Over:

500mm = 0.012mm

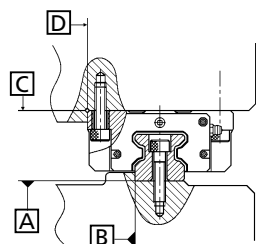
1000mm = 0.016mm

3000mm = 0.025mm

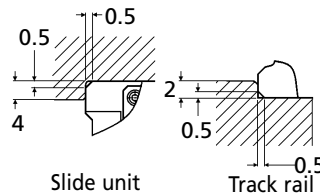
(A to C and D to B).

3 higher accuracy grades available.

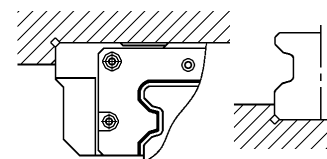
P.O.A.



Mounting Example

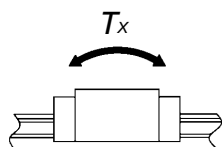
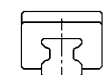
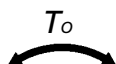
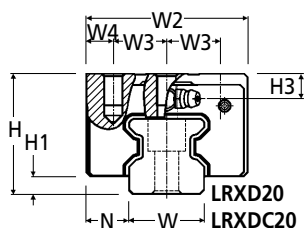
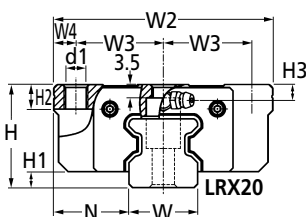


Slide unit
Track rail
Corner radius and shoulder heights of the mating reference mounting surfaces.



Relieved fillet at the corner of the mating reference mounting surfaces.

All faces of track are ground.



Figures shown in T_o column and upper figures of all T_x and T_y of each model number apply to one slide unit as illustrated above.

The higher figures below are for two slides in close contact on the same rail.

Extras

Preload available:

$T_1 = 0.02 C_o$

$T_2 = 0.05 C_o$

$T_3 = 0.08 C_o$

or zero - depends on stocking and availability.

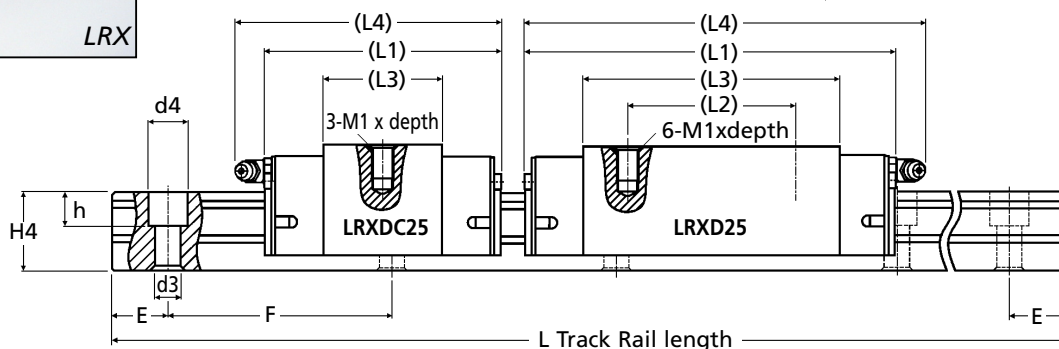
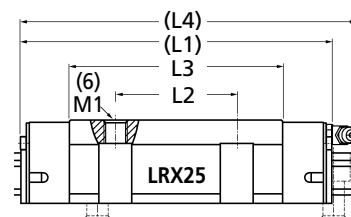
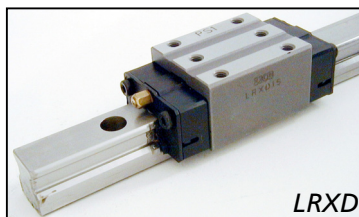
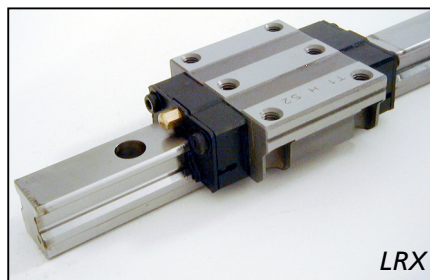
	Part Number		
	LRX-20	LRXD-20	LRXDC-20
Dimensions of Slide Unit mm	FLANGED	STD. BLOCK	SHORT BLOCK
W2	63.00	44.00	44.00
W3	26.50	16.00	16.00
W4	5.00	6.00	6.00
L1	86.00	86.00	66.00
L2	40.00	36.00	-
L3	51.60	51.60	31.60
L4	94.00	94.00	74.00
d1	-	-	-
M1	M6	M5 x 8	M5 x 8
H2	10.00	-	-
H3	4.00	8.00	8.00
Weight (kg)	0.44	0.38	0.25
Dimensions of Assembly mm			
H ± 0.04	30.00	34.00	34.00
H1	5.00	5.00	5.00
N ± 0.05	21.50	12.00	12.00
M1 Bolt Tightening Torque (Nm)	13.30	7.90	7.90
Dimensions of Track Rail mm			
W	20.00	20.00	20.00
H4	21.00	21.00	21.00
d3	6.00	6.00	6.00
d4	9.50	9.50	9.50
h	8.50	8.50	8.50
E	30.00	30.00	30.00
F	60.00	60.00	60.00
Weight kg			
Track Rail per 100mm	2.73	2.73	2.73
Track Rail Mounting Bolt Bolt Tightening Torque (Nm)	M5 x 20 7.90	M5 x 20 7.90	M5 x 20 7.90
Basic Dynamic Load Rating			
C N	19200.00	19200.00	13300.00
Basic Static Load Rating			
C ₀ N	42500.00	42500.00	26300.00
Static Rated Moment			
T _o Nm	548.00	548.00	339.00
T _x Nm T _y Nm	377.00	377.00	149.00
	2510.00	2510.00	1250.00

LRX25
LRXD25
LRXDC25

LINEAR MOTION

Precision Linear Roller Way - Steel

Super X Series - Roller Retained - 4 Rows of Cylindrical Rollers



Performance

- High load capacity
- High rigidity
- High reliability
- Smooth motion
- Good load balance
- High accuracy

Part Number	L Track Rail Length	No. of Holes	Carriage (Side Unit)	Price Each
LRX25-180	180	3	-	£77.96
LRX25-240	240	4	-	£99.00
LRX25-300	300	5	-	£123.78
LRX25-360	360	6	-	£135.42
LRX25-420	420	7	-	£158.00
LRX25-480	480	8	-	£171.85
LRX25-540	540	9	-	£193.35
LRX25-600	600	10	-	£214.84
LRX25-660	660	11	-	£226.49
LRX25-720	720	12	-	£247.09
LRX25-780	780	13	-	£267.69
LRX25-840	840	14	-	£281.12
LRX25-900	900	15	-	£301.23
LRX25-960	960	16	-	£321.33
LRX25-1080	1080	18	-	£361.47
LRX25-1200	1200	20	-	£390.07
LRX25-1320	1320	22	-	£429.08
LRX25-1500	1500	25	-	£481.44
LRX25-1800	1800	30	-	£577.72
LRX25-2100	2100	35	-	£674.02
LRX25-2400	2400	40	-	£770.32
LRX25-2700	2700	45	-	£866.60
LRX25-3000	3000	50	-	£962.90
LRX25-C	-	-	Flanged Slide mounted from upper or lower	£220.03
LRXD25-C	-	-	Standard Block Slide mounted from upper only	£220.03
LRXDC25-C	-	-	Short Block Slide mounted from upper only	£184.00

Material

Rail Carriage & Rollers: Carbon Steel Hardened End Retaining Plates: Synthetic Resin End Seals: Rubber Grease Nipple: Brass

Performance

Maximum Speed: 3m/sec. Maximum Rail Length: 3000mm Maximum Temperature: +100°C (Constant), +120°C (Intermittent)

Other Info.

Stainless version available LRXDC25-SL, LRXD25-SL style carriage. P.O.A. Max Length: 1200mm

Characteristics: High rigidity due to the large number of rollers and smaller elastic deformation than the ball equivalent. High load capacity. Superior vibration characteristic. Long life and high accuracy. Well-balanced structure. Smooth and quiet motion.

Lubrication: Every 6 months under general use. Every 3 months for daily use. Use a lithium-soap based grease. (Oil can be used).

When ordering track rail, please order carriages required (1, 2, 3, etc.) per rail.

For example: 1 x LRX25-480 and 2 x LRXD25-C (Carriages and tracks are produced to suit each individual set)

+44 (0)1246 455500
+44 (0)1246 455522

ondrives

sales@ondrives.com
www.ondrives.com

Product information updated 1st April 2011 and subject to change. Please contact Sales for the latest prices and availability.

LINEAR MOTION

LRX25
LRXD25
LRXDC25

Precision Linear Roller Way - Steel

Super X Series - Roller Retained - 4 Rows of Cylindrical Rollers

Performance

Dimension Variation Between Carriage Slides on Same Rail:

H = 0.015, N = 0.020

Parallelism in Operation Over:

500mm = 0.012mm

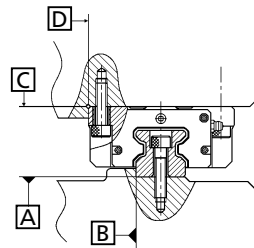
1000mm = 0.016mm

3000mm = 0.025mm

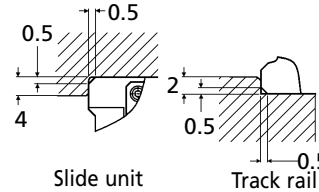
(A to C and D to B).

3 higher accuracy grades available.

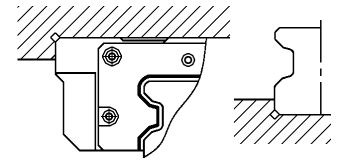
P.O.A.



Mounting Example

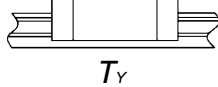
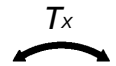
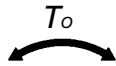
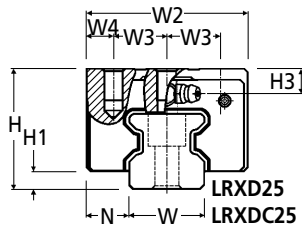
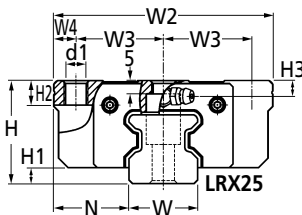


Slide unit
Track rail
Corner radius and shoulder heights of the mating reference mounting surfaces.



Relieved fillet at the corner of the mating reference mounting surfaces.

All faces of track are ground.



T_y

Figures shown in T_o column and upper figures of all T_x and T_y of each model number apply to one slide unit as illustrated above.

The higher figures below are for two slides in close contact on the same rail.

Extras

Preload available:

$T_1 = 0.02 C_o$

$T_2 = 0.05 C_o$

$T_3 = 0.08 C_o$

or zero - depends on stocking and availability.

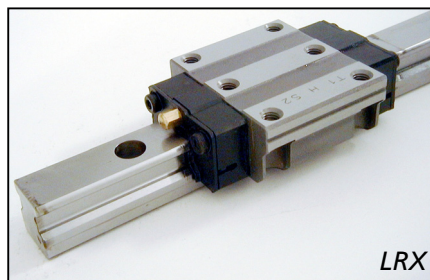
	Part Number		
	LRX-25	LRXD-25	LRXDC-25
Dimensions of Slide Unit mm	FLANGED	STD. BLOCK	SHORT BLOCK
W2	70.00	48.00	48.00
W3	28.50	17.50	17.50
W4	6.50	6.50	6.50
L1	98.00	98.00	74.00
L2	45.00	35.00	-
L3	60.00	60.00	36.00
L4	107.00	107.00	83.00
d1	7.00	-	-
M1	M8	M6 x 12	M6 x 12
H2	10.00	-	-
H3	5.00	9.00	9.00
Weight (kg)	0.67	0.55	0.36
Dimensions of Assembly mm			
H ± 0.04	36.00	40.00	40.00
H1	6.00	6.00	6.00
N ± 0.05	23.50	12.50	12.50
M1 Bolt Tightening Torque (Nm)	32.00	13.30	13.30
Dimensions of Track Rail mm			
W	23.00	23.00	23.00
H4	24.50	24.50	24.50
d3	7.00	7.00	7.00
d4	11.00	11.00	11.00
h	9.00	9.00	9.00
E	30.00	30.00	30.00
F	60.00	60.00	60.00
Weight kg			
Track Rail per 100mm	3.59	3.59	3.59
Track Rail Mounting Bolt Bolt Tightening Torque (Nm)	M6 x 25 13.30	M6 x 25 13.30	M6 x 25 13.30
Basic Dynamic Load Rating			
C N	26200.00	26200.00	17600.00
Basic Static Load Rating			
C ₀ N	56000.00	56000.00	33600.00
Static Rated Moment			
T _o Nm	829.00	829.00	497.00
T _x Nm T _y Nm	570.00	570.00	213.00
	3780.00	3780.00	1800.00

LRX30
LRXD30
LRXDC30

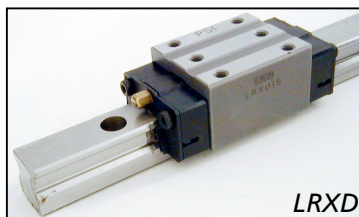
LINEAR MOTION

Precision Linear Roller Way - Steel

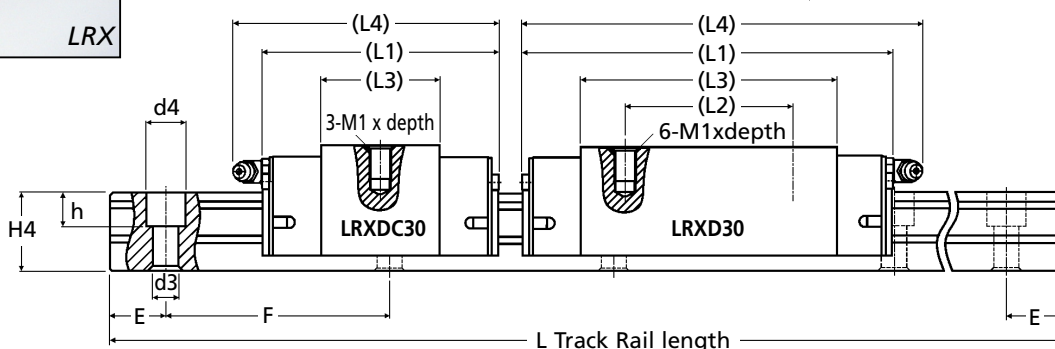
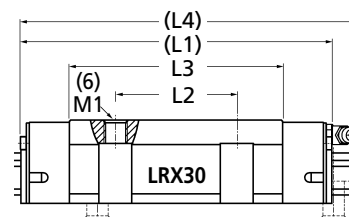
Super X Series - Roller Retained - 4 Rows of Cylindrical Rollers



LRX



LRXD



Performance

- High load capacity
- High rigidity
- High reliability
- Smooth motion
- Good load balance
- High accuracy

Part Number	L Track Rail Length	No. of Holes	Carriage (Side Unit)	Price Each
LRX30-320	320	4	-	£136.01
LRX30-400	400	5	-	£170.00
LRX30-480	480	6	-	£188.92
LRX30-560	560	7	-	£220.42
LRX30-640	640	8	-	£243.56
LRX30-720	720	9	-	£274.02
LRX30-800	800	10	-	£298.20
LRX30-880	880	11	-	£328.04
LRX30-960	960	12	-	£357.84
LRX30-1040	1040	13	-	£380.15
LRX30-1120	1120	14	-	£409.35
LRX30-1200	1200	15	-	£434.77
LRX30-1280	1280	16	-	£463.76
LRX30-1360	1360	17	-	£492.77
LRX30-1440	1440	18	-	£521.75
LRX30-1520	1520	19	-	£544.01
LRX30-1600	1600	20	-	£572.65
LRX30-1760	1760	22	-	£629.92
LRX30-2000	2000	25	-	£715.81
LRX30-2160	2160	27	-	£773.09
LRX30-2400	2400	30	-	£859.00
LRX30-2800	2800	35	-	£1002.17
LRX30-2960	2960	37	-	£1059.46
LRX30-C	-	-	Flanged Slide mounted from upper or lower	£264.96
LRXD30-C	-	-	Standard Block Slide mounted from upper only	£252.30
LRXDC30-C	-	-	Short Block Slide mounted from upper only	£205.63

Material

Rail Carriage & Rollers: Carbon Steel Hardened End Retaining Plates: Synthetic Resin End Seals: Rubber Grease Nipple: Brass

Performance

Maximum Speed: 3m/sec. Maximum Rail Length: 2960mm Maximum Temperature: +100°C (Constant), +120°C (Intermittent)

Other Info.

Other sizes and models available. 6 types, 52 models.

Characteristics: High rigidity due to the large number of rollers and smaller elastic deformation than the ball equivalent. High load capacity. Superior vibration characteristic. Long life and high accuracy. Well-balanced structure. Smooth and quiet motion.

Lubrication: Every 6 months under general use. Every 3 months for daily use. Use a lithium-soap based grease. (Oil can be used).

When ordering track rail, please order carriages required (1, 2, 3, etc.) per rail.

For example: 1 x LRX30-480 and 2 x LRXD30-C (Carriages and tracks are produced to suit each individual set)

+44 (0)1246 455500
+44 (0)1246 455522

ondrives

sales@ondrives.com
www.ondrives.com

Product information updated 1st April 2011 and subject to change. Please contact Sales for the latest prices and availability.

LINEAR MOTION

LRX30
LRXD30
LRXDC30

Precision Linear Roller Way - Steel

Super X Series - Roller Retained - 4 Rows of Cylindrical Rollers

Performance

Dimension Variation Between Carriage Slides on Same Rail:

H = 0.015, N = 0.020

Parallelism in Operation Over:

500mm = 0.012mm

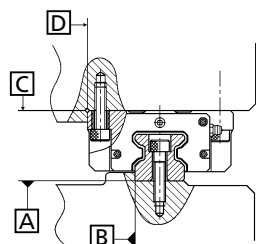
1000mm = 0.016mm

3000mm = 0.025mm

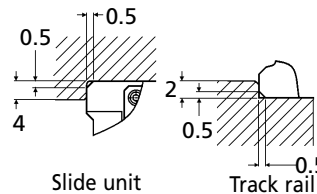
(A to C and D to B).

3 higher accuracy grades available.

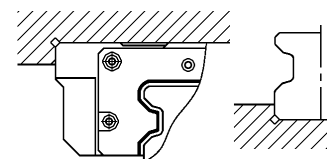
P.O.A.



Mounting Example

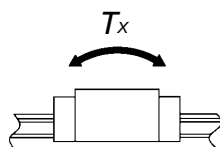
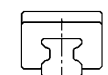
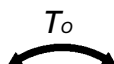
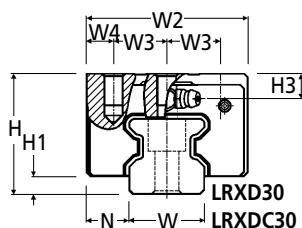
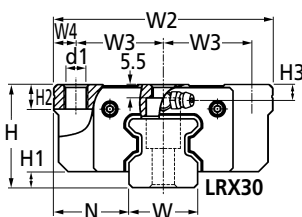


Slide unit
Track rail
Corner radius and shoulder heights of the mating reference mounting surfaces.



Relieved fillet at the corner of the mating reference mounting surfaces.

All faces of track are ground.



Figures shown in T_o column and upper figures of all T_x and T_y of each model number apply to one slide unit as illustrated above.

The higher figures below are for two slides in close contact on the same rail.

Extras

Preload available:

$T_1 = 0.02 C_o$

$T_2 = 0.05 C_o$

$T_3 = 0.08 C_o$

or zero - depends on stocking and availability.

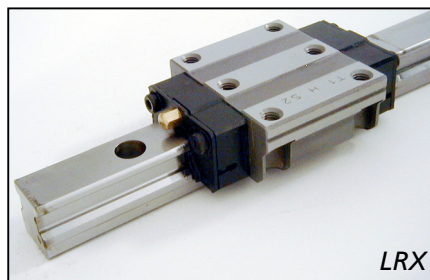
	Part Number		
	LRX-30	LRXD-30	LRXDC-30
Dimensions of Slide Unit mm	FLANGED	STD. BLOCK	SHORT BLOCK
W2	90.00	60.00	60.00
W3	36.00	20.00	20.00
W4	9.00	10.00	10.00
L1	113.00	113.00	85.00
L2	52.00	40.00	-
L3	70.40	70.40	42.40
L4	123.00	123.00	95.00
d1	8.50	-	-
M1	M10	M8 x 12	M8 x 12
H2	10.00	-	-
H3	6.50	9.50	9.50
Weight (kg)	1.20	0.92	0.60
Dimensions of Assembly mm			
H ± 0.04	42.00	45.00	45.00
H1	6.50	6.50	6.50
N ± 0.05	31.00	16.00	16.00
M1 Bolt Tightening Torque (Nm)	62.70	32.00	32.00
Dimensions of Track Rail mm			
W	28.00	28.00	28.00
H4	28.00	28.00	28.00
d3	9.00	9.00	9.00
d4	14.00	14.00	14.00
h	12.00	12.00	12.00
E	40.00	40.00	40.00
F	80.00	80.00	80.00
Weight kg			
Track Rail per 100mm	5.01	5.01	5.01
Track Rail Mounting Bolt	M8 x 28	M8 x 28	M8 x 28
Bolt Tightening Torque (Nm)	32.00	32.00	32.00
Basic Dynamic Load Rating			
C N	35400.00	35400.00	23800.00
Basic Static Load Rating			
C ₀ N	74100.00	74100.00	44400.00
Static Rated Moment			
T _o Nm	13400.00	13400.00	804.00
T _x Nm T _y Nm	880.00	880.00	328.00
	5750.00	5750.00	2730.00

LRX35
LRXD35
LRXDC35

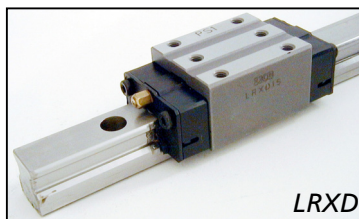
LINEAR MOTION

Precision Linear Roller Way - Steel

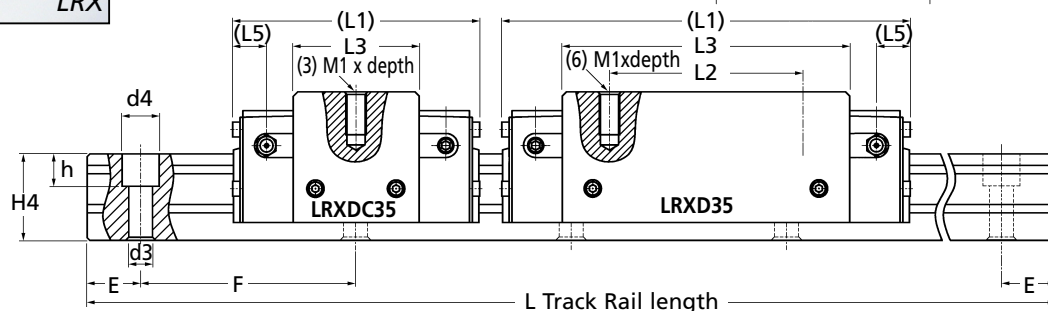
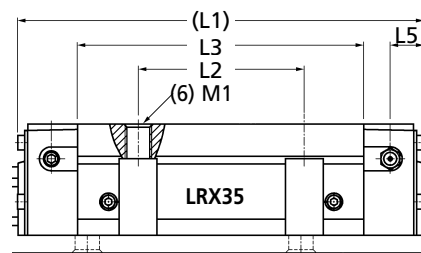
Super X Series - Roller Retained - 4 Rows of Cylindrical Rollers



LRX



LRXD



Performance

- High load capacity
- High rigidity
- High reliability
- Smooth motion
- Good load balance
- High accuracy

Part Number	L Track Rail Length	No. of Holes	Carriage (Side Unit)	Price Each
LRX35-320	320	4	-	£170.04
LRX35-400	400	5	-	£212.61
LRX35-480	480	6	-	£236.22
LRX35-560	560	7	-	£275.60
LRX35-640	640	8	-	£298.66
LRX35-720	720	9	-	£336.00
LRX35-800	800	10	-	£361.81
LRX35-880	880	11	-	£398.01
LRX35-960	960	12	-	£434.21
LRX35-1040	1040	13	-	£456.28
LRX35-1120	1120	14	-	£491.42
LRX35-1200	1200	15	-	£519.62
LRX35-1280	1280	16	-	£554.28
LRX35-1360	1360	17	-	£588.92
LRX35-1440	1440	18	-	£623.56
LRX35-1520	1520	19	-	£642.06
LRX35-1600	1600	20	-	£675.87
LRX35-1760	1760	22	-	£743.43
LRX35-2000	2000	25	-	£844.83
LRX35-2160	2160	27	-	£912.41
LRX35-2400	2400	30	-	£1013.82
LRX35-2800	2800	35	-	£1182.79
LRX35-2960	2960	37	-	£1250.37
LRX35-C	-	-	Flanged Slide mounted from upper or lower	£330.67
LRXD35-C	-	-	Standard Block Slide mounted from upper only	£314.85
LRXDC35-C	-	-	Short Block Slide mounted from upper only	£298.16

Material

Rail Carriage & Rollers: Carbon Steel Hardened End Retaining Plates: Synthetic Resin End Seals: Rubber Grease Nipple: Brass

Performance

Maximum Speed: 3m/sec. Maximum Rail Length: 2960mm Maximum Temperature: +100°C (Constant), +120°C (Intermittent)

Other Info.

Other sizes and models available. 6 types, 52 models.

Characteristics: High rigidity due to the large number of rollers and smaller elastic deformation than the ball equivalent. High load capacity. Superior vibration characteristic. Long life and high accuracy. Well-balanced structure. Smooth and quiet motion.

Lubrication: Every 6 months under general use. Every 3 months for daily use. Use a lithium-soap based grease. (Oil can be used).

When ordering track rail, please order carriages required (1, 2, 3, etc.) per rail.

For example: 1 x LRX35-480 and 2 x LRXD35-C (Carriages and tracks are produced to suit each individual set)

+44 (0)1246 455500
+44 (0)1246 455522

ondrives

sales@ondrives.com
www.ondrives.com

Product information updated 1st April 2011 and subject to change. Please contact Sales for the latest prices and availability.

LINEAR MOTION

LRX35
LRXD35
LRXDC35

Precision Linear Roller Way - Steel

Super X Series - Roller Retained - 4 Rows of Cylindrical Rollers

Performance

Dimension Variation Between Carriage Slides on Same Rail:

H = 0.015, N = 0.020

Parallelism in Operation Over:

500mm = 0.012mm

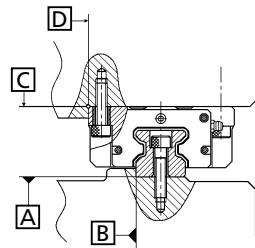
1000mm = 0.016mm

3000mm = 0.025mm

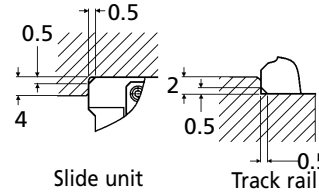
(A to C and D to B).

3 higher accuracy grades available.

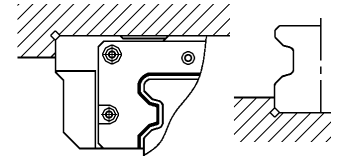
P.O.A.



Mounting Example

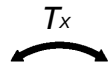
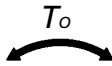
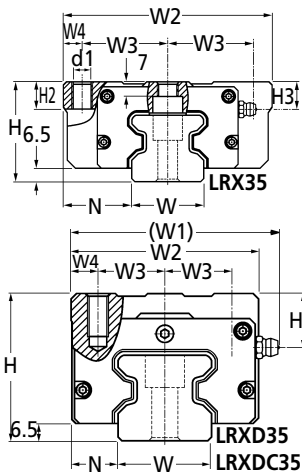


Slide unit
Track rail
Corner radius and shoulder heights of the mating reference mounting surfaces.



Relieved fillet at the corner of the mating reference mounting surfaces.

All faces of track are ground.



Figures shown in T_o column and upper figures of all T_x and T_y of each model number apply to one slide unit as illustrated above.

The higher figures below are for two slides in close contact on the same rail.

Extras

Preload available:

$T_1 = 0.02 C_o$

$T_2 = 0.05 C_o$

$T_3 = 0.08 C_o$

or zero - depends on stocking and availability.

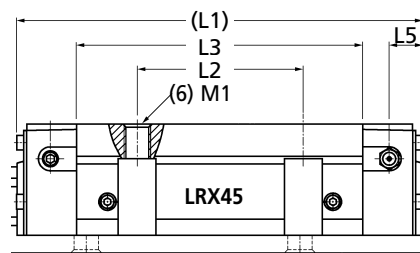
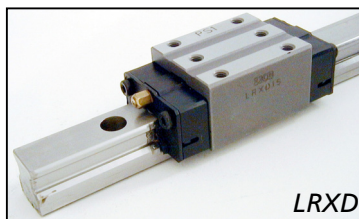
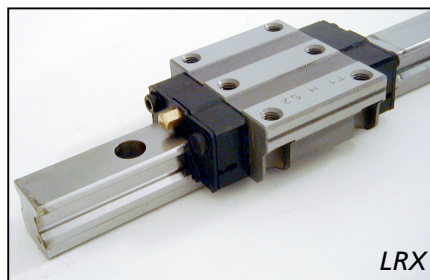
	Part Number		
	LRX-35	LRXD-35	LRXDC-35
Dimensions of Slide Unit mm	FLANGED	STD. BLOCK	SHORT BLOCK
W1	-	80.00	80.00
W2	100.00	70.00	70.00
W3	41.00	25.00	25.00
W4	9.00	10.00	10.00
L1	124.00	124.00	92.00
L2	62.00	50.00	-
L3	78.60	78.60	46.60
L5	12.50	12.50	12.50
d1	8.50	-	-
M1	M10	M8 x 16	M8 x 16
H2	13.00	-	-
H3	13.00	20.00	20.00
Weight (kg)	1.76	1.52	0.97
Dimensions of Assembly mm			
H ± 0.04	48.00	55.00	55.00
N ± 0.05	33.00	18.00	18.00
M1 Bolt Tightening Torque (Nm)	62.70	32.00	32.00
Dimensions of Track Rail mm			
W	34.00	34.00	34.00
H4	32.00	32.00	32.00
d3	9.00	9.00	9.00
d4	14.00	14.00	14.00
h	12.00	12.00	12.00
E	40.00	40.00	40.00
F	80.00	80.00	80.00
Weight kg			
Track Rail per 100mm	6.88	6.88	6.88
Track Rail Mounting Bolt Bolt Tightening Torque (Nm)	M8 x 35 32.00	M8 x 35 32.00	M8 x 35 32.00
Basic Dynamic Load Rating			
C N	48200.00	48200.00	32500.00
Basic Static Load Rating			
C ₀ N	99600.00	99600.00	59700.00
Static Rated Moment			
T _o Nm	2160.00	2160.00	1300.00
T _x Nm T _y Nm	1350.00	1350.00	504.00
	8430.00	8430.00	3940.00

LRX45
LRXD45
LRXDC45

LINEAR MOTION

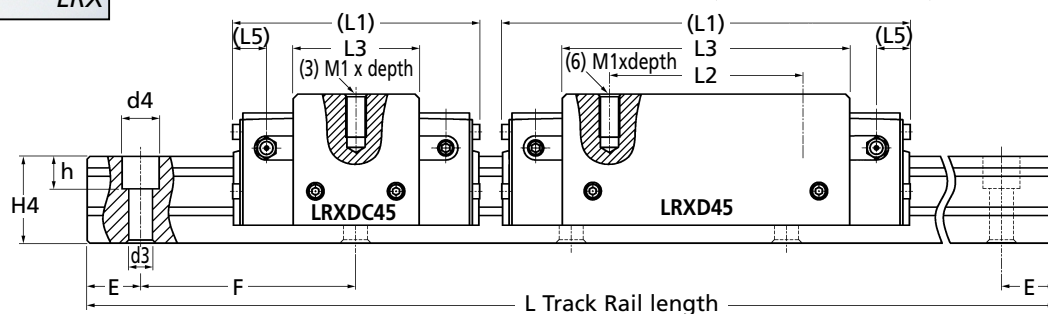
Precision Linear Roller Way - Steel

Super X Series - Roller Retained - 4 Rows of Cylindrical Rollers



Performance

- High load capacity
- High rigidity
- High reliability
- Smooth motion
- Good load balance
- High accuracy



Part Number	L Track Rail Length	No. of Holes	Carriage (Side Unit)	Price Each
LRX45-315	315	3	-	£199.80
LRX45-420	420	4	-	£236.68
LRX45-525	525	5	-	£282.80
LRX45-630	630	6	-	£350.43
LRX45-735	735	7	-	£384.10
LRX45-840	840	8	-	£425.67
LRX45-945	945	9	-	£478.87
LRX45-1050	1050	10	-	£509.97
LRX45-1155	1155	11	-	£560.98
LRX45-1260	1260	12	-	£596.14
LRX45-1365	1365	13	-	£645.82
LRX45-1470	1470	14	-	£684.81
LRX45-1575	1575	15	-	£733.72
LRX45-1680	1680	16	-	£782.36
LRX45-1785	1785	17	-	£831.56
LRX45-1890	1890	18	-	£879.20
LRX45-1995	1995	19	-	£900.13
LRX45-2100	2100	20	-	£947.49
LRX45-2310	2310	22	-	£1042.28
LRX45-2415	2415	23	-	£1091.18
LRX45-2625	2625	25	-	£1183.57
LRX45-2835	2835	27	-	£1278.87
LRX45-2940	2940	28	-	£1326.53
LRX45-C	-	-	Flanged Slide mounted from upper or lower	£466.12
LRXD45-C	-	-	Standard Block Slide mounted from upper only	£443.08
LRXDC45-C	-	-	Short Block Slide mounted from upper only	£407.31

Material

Rail Carriage & Rollers: Carbon Steel Hardened End Retaining Plates: Synthetic Resin End Seals: Rubber Grease Nipple: Brass

Performance

Maximum Speed: 2m/sec. Maximum Rail Length: 2940mm Maximum Temperature: +100°C (Constant), +120°C (Intermittent)

Other Info.

Other sizes and models available. 6 types, 52 models.

Characteristics: High rigidity due to the large number of rollers and smaller elastic deformation than the ball equivalent. High load capacity. Superior vibration characteristic. Long life and high accuracy. Well-balanced structure. Smooth and quiet motion.

Lubrication: Every 6 months under general use. Every 3 months for daily use. Use a lithium-soap based grease. (Oil can be used).

When ordering track rail, please order carriages required (1, 2, 3, etc.) per rail.

For example: 1 x LRX45-480 and 2 x LRXD45-C (Carriages and tracks are produced to suit each individual set)

+44 (0)1246 455500
+44 (0)1246 455522

ondrives

sales@ondrives.com
www.ondrives.com

Product information updated 1st April 2011 and subject to change. Please contact Sales for the latest prices and availability.

LINEAR MOTION

LRX45
LRXD45
LRXDC45

Precision Linear Roller Way - Steel

Super X Series - Roller Retained - 4 Rows of Cylindrical Rollers

Performance

Dimension Variation Between Carriage Slides on Same Rail:

H = 0.015, N = 0.020

Parallelism in Operation Over:

500mm = 0.012mm

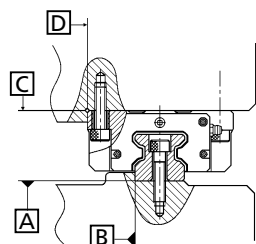
1000mm = 0.016mm

3000mm = 0.025mm

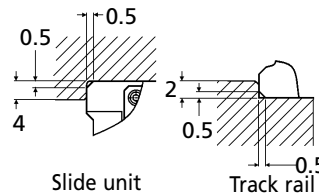
(A to C and D to B).

3 higher accuracy grades available.

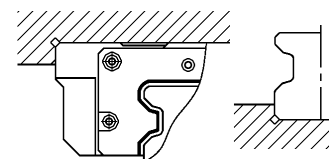
P.O.A.



Mounting Example

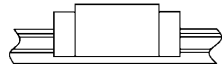
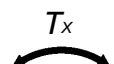
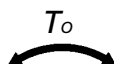
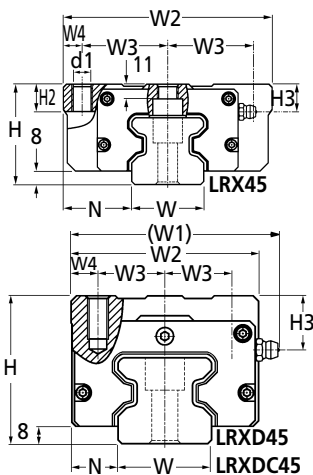


Slide unit
Track rail
Corner radius and shoulder heights of the mating reference mounting surfaces.



Relieved fillet at the corner of the mating reference mounting surfaces.

All faces of track are ground.



Figures shown in T_o column and upper figures of all T_x and T_y of each model number apply to one slide unit as illustrated above.

The higher figures below are for two slides in close contact on the same rail.

Extras

Preload available:

$T_1 = 0.02 C_o$

$T_2 = 0.05 C_o$

$T_3 = 0.08 C_o$

or zero - depends on stocking and availability.

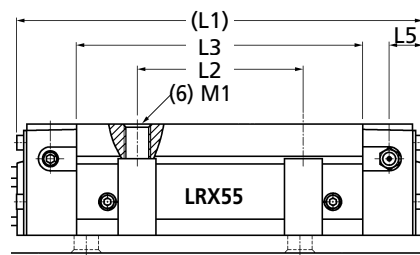
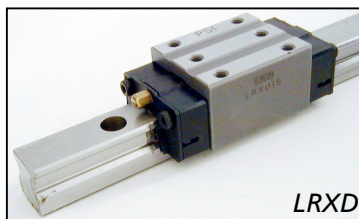
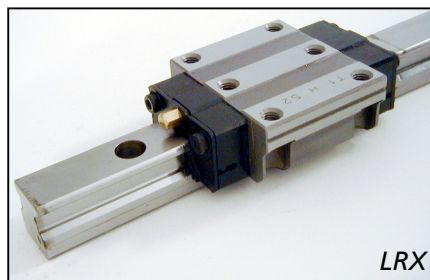
	Part Number		
	LRX-45	LRXD-45	LRXDC-45
Dimensions of Slide Unit mm	FLANGED	STD. BLOCK	SHORT BLOCK
W1	-	98.00	98.00
W2	120.00	86.00	86.00
W3	50.00	30.00	30.00
W4	10.00	13.00	13.00
L1	154.00	154.00	114.00
L2	80.00	60.00	-
L3	99.00	99.00	59.00
L5	17.50	17.50	17.50
d1	10.50	-	-
M1	M12	M10 x 20	M10 x 20
H2	15.00	-	-
H3	16.00	26.00	26.00
Weight (kg)	3.26	3.13	2.01
Dimensions of Assembly mm			
H ± 0.04	60.00	70.00	70.00
N ± 0.05	37.50	20.50	20.50
M1 Bolt Tightening Torque (Nm)	108.00	62.70	62.70
Dimensions of Track Rail mm			
W	45.00	45.00	45.00
H4	38.00	38.00	38.00
d3	14.00	14.00	14.00
d4	20.00	20.00	20.00
h	17.00	17.00	17.00
E	52.50	52.50	52.50
F	105.00	105.00	105.00
Weight kg			
Track Rail per 100mm	10.80	10.80	10.80
Track Rail Mounting Bolt Bolt Tightening Torque (Nm)	M12 x 40 108.00	M12 x 40 108.00	M12 x 40 108.00
Basic Dynamic Load Rating			
C N	78200.00	78200.00	52800.00
Basic Static Load Rating			
C ₀ N	159000.00	159000.00	95200.00
Static Rated Moment			
T _o Nm	4410.00	4410.00	2650.00
T _x Nm T _y Nm	2690.00	2690.00	1000.00
	16700.00	16700.00	7760.00

LRX55
LRXD55
LRXDC55

LINEAR MOTION

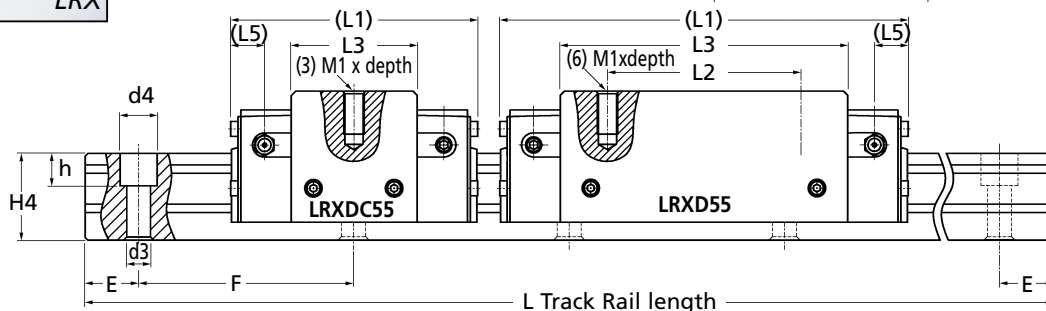
Precision Linear Roller Way - Steel

Super X Series - Roller Retained - 4 Rows of Cylindrical Rollers



Performance

- High load capacity
- High rigidity
- High reliability
- Smooth motion
- Good load balance
- High accuracy



Part Number	L Track Rail Length	No. of Holes	Carriage (Side Unit)	Price Each
LRX55-360	360	3	-	£265.58
LRX55-480	480	4	-	£338.12
LRX55-600	600	5	-	£405.76
LRX55-720	720	6	-	£475.87
LRX55-840	840	7	-	£532.98
LRX55-960	960	8	-	£609.13
LRX55-1080	1080	9	-	£685.28
LRX55-1200	1200	10	-	£720.54
LRX55-1320	1320	11	-	£792.58
LRX55-1440	1440	12	-	£864.65
LRX55-1560	1560	13	-	£909.81
LRX55-1680	1680	14	-	£979.94
LRX55-1800	1800	15	-	£1049.93
LRX55-1920	1920	16	-	£1099.44
LRX55-2040	2040	17	-	£1168.15
LRX55-2160	2160	18	-	£1236.87
LRX55-2280	2280	19	-	£1305.58
LRX55-2400	2400	20	-	£1374.32
LRX55-2520	2520	21	-	£1443.03
LRX55-2640	2640	22	-	£1511.75
LRX55-2760	2760	23	-	£1580.47
LRX55-2880	2880	24	-	£1649.19
LRX55-3000	3000	25	-	£1689.29
LRX55-C	-	-	Flanged Slide mounted from upper or lower	£629.38
LRXD55-C	-	-	Standard Block Slide mounted from upper only	£599.83
LRXDC55-C	-	-	Short Block Slide mounted from upper only	£534.90

Material

Rail Carriage & Rollers: Carbon Steel Hardened End Retaining Plates: Synthetic Resin End Seals: Rubber Grease Nipple: Brass

Performance

Maximum Speed: 1.66m/sec. Maximum Rail Length: 3000mm Maximum Temperature: +100°C (Constant), +120°C (Intermittent)

Other Info.

Other sizes and models available. 6 types, 52 models.

Characteristics: High rigidity due to the large number of rollers and smaller elastic deformation than the ball equivalent. High load capacity. Superior vibration characteristic. Long life and high accuracy. Well-balanced structure. Smooth and quiet motion.

Lubrication: Every 6 months under general use. Every 3 months for daily use. Use a lithium-soap based grease. (Oil can be used).

When ordering track rail, please order carriages required (1, 2, 3, etc.) per rail.

For example: 1 x LRX55-480 and 2 x LRXD55-C (Carriages and tracks are produced to suit each individual set)

+44 (0)1246 455500

+44 (0)1246 455522

ondrives

sales@ondrives.com

www.ondrives.com

Product information updated 1st April 2011 and subject to change. Please contact Sales for the latest prices and availability.

LINEAR MOTION

LRX55
LRXD55
LRXDC55

Precision Linear Roller Way - Steel

Super X Series - Roller Retained - 4 Rows of Cylindrical Rollers

Performance

Dimension Variation Between Carriage Slides on Same Rail:

$H = 0.015, N = 0.020$

Parallelism in Operation Over:

500mm = 0.012mm

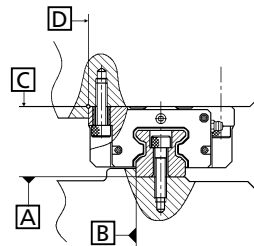
1000mm = 0.016mm

3000mm = 0.025mm

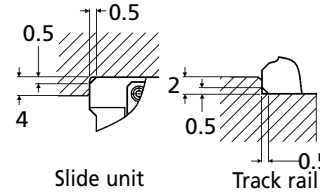
(A to C and D to B).

3 higher accuracy grades available.

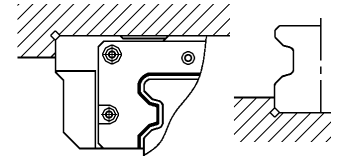
P.O.A.



Mounting Example

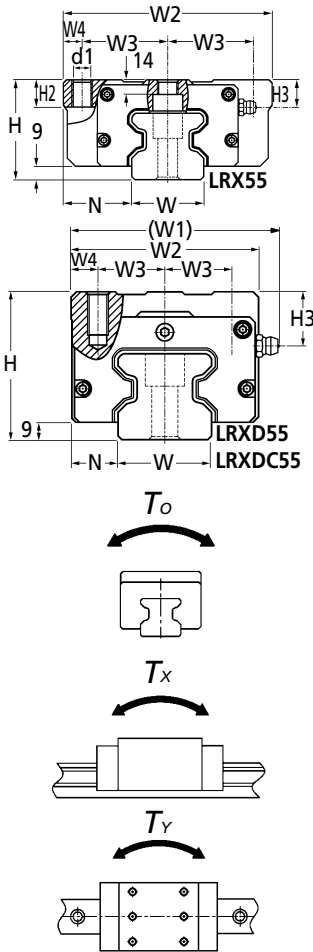


Slide unit
Track rail
Corner radius and shoulder heights of the mating reference mounting surfaces.



Relieved fillet at the corner of the mating reference mounting surfaces.

All faces of track are ground.



Figures shown in T_o column and upper figures of all T_x and T_y of each model number apply to one slide unit as illustrated above.

The higher figures below are for two slides in close contact on the same rail.

Extras

Preload available:

$T_1 = 0.02 C_o$

$T_2 = 0.05 C_o$

$T_3 = 0.08 C_o$

or zero - depends on stocking and availability.

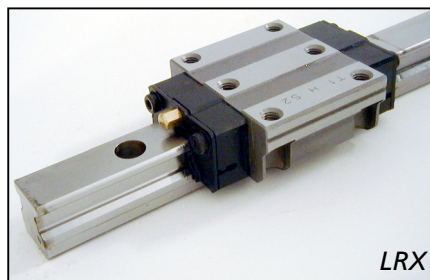
	Part Number		
	LRX-55	LRXD-55	LRXDC-55
Dimensions of Slide Unit mm	FLANGED	STD. BLOCK	SHORT BLOCK
W1	-	112.00	112.00
W2	140.00	100.00	100.00
W3	58.00	37.50	37.50
W4	12.00	12.50	12.50
L1	184.00	184.00	136.00
L2	95.00	75.00	-
L3	120.00	120.00	72.00
L5	20.00	20.00	20.00
d1	12.50	-	-
M1	M14	M12 x 25	M12 x 25
H2	17.00	-	-
H3	16.00	26.00	26.00
Weight (kg)	5.42	4.97	3.17
Dimensions of Assembly mm			
$H \pm 0.04$	70.00	80.00	80.00
$N \pm 0.05$	43.50	23.50	23.50
M1 Bolt Tightening Torque (Nm)	172.00	108.00	108.00
Dimensions of Track Rail mm			
W	53.00	53.00	53.00
H4	43.00	43.00	43.00
d3	16.00	16.00	16.00
d4	23.00	23.00	23.00
h	20.00	20.00	20.00
E	60.00	60.00	60.00
F	120.00	120.00	120.00
Weight kg			
Track Rail per 100mm	14.10	14.10	14.10
Track Rail Mounting Bolt Bolt Tightening Torque (Nm)	M14 x 45	M14 x 45	M14 x 45
	172.00	172.00	172.00
Basic Dynamic Load Rating			
C N	121000.00	121000.00	81500.00
Basic Static Load Rating			
C_o N	246000.00	246000.00	148000.00
Static Rated Moment			
T_o Nm	8010.00	8010.00	4810.00
T_x Nm T_y Nm	5020.00	5020.00	1870.00
	30900.00	30900.00	14440.00

LRX65
LRXD65
LRXDC65

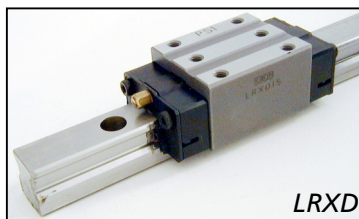
LINEAR MOTION

Precision Linear Roller Way - Steel

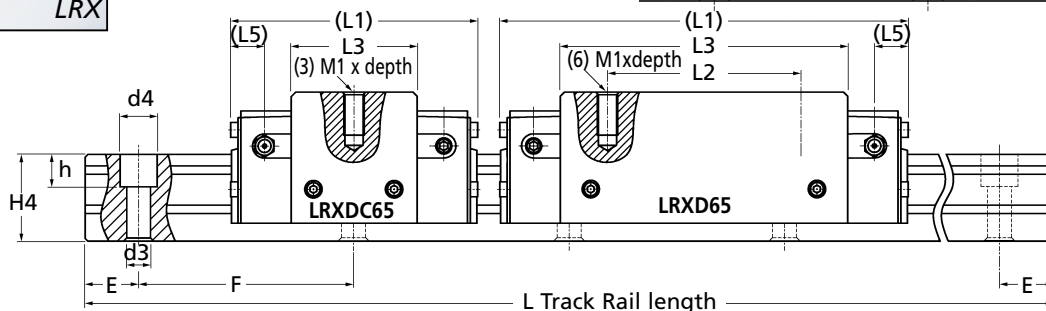
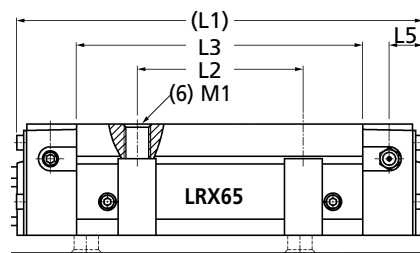
Super X Series - Roller Retained - 4 Rows of Cylindrical Rollers



LRX



LRXD



Performance

- High load capacity
- High rigidity
- High reliability
- Smooth motion
- Good load balance
- High accuracy

Part Number	L Track Rail Length	No. of Holes	Carriage (Side Unit)	Price Each
LRX65-150	150	3	-	£268.95
LRX65-300	300	4	-	£434.26
LRX65-450	450	5	-	£520.03
LRX65-600	600	6	-	£605.74
LRX65-750	750	7	-	£691.43
LRX65-900	900	8	-	£777.15
LRX65-1050	1050	9	-	£862.87
LRX65-1200	1200	10	-	£948.60
LRX65-1350	1350	11	-	£1034.30
LRX65-1500	1500	12	-	£1120.01
LRX65-1650	1650	13	-	£1205.77
LRX65-1800	1800	14	-	£1291.41
LRX65-1950	1950	15	-	£1377.22
LRX65-2100	2100	16	-	£1462.87
LRX65-2250	2250	17	-	£1548.61
LRX65-2400	2400	18	-	£1634.33
LRX65-2550	2550	19	-	£1720.03
LRX65-2700	2700	20	-	£1805.74
LRX65-2850	2850	21	-	£1891.48
LRX65-3000	3000	22	-	£1977.19
LRX65-C	-	-	Flanged Slide mounted from upper or lower	£739.05
LRXD65-C	-	-	Standard Block Slide mounted from upper only	£739.05
LRXDC65-C	-	-	Short Block Slide mounted from upper only	£495.22

Material

Rail Carriage & Rollers: Carbon Steel Hardened End Retaining Plates: Synthetic Resin End Seals: Rubber Grease Nipple: Brass

Performance

Maximum Speed: 1.25m/sec. Maximum Rail Length: 3000mm Maximum Temperature: +100°C (Constant), +120°C (Intermittent)

Other Info.

Other sizes and models available. 6 types, 52 models.

Characteristics: High rigidity due to the large number of rollers and smaller elastic deformation than the ball equivalent. High load capacity. Superior vibration characteristic. Long life and high accuracy. Well-balanced structure. Smooth and quiet motion.

Lubrication: Every 6 months under general use. Every 3 months for daily use. Use a lithium-soap based grease. (Oil can be used).

When ordering track rail, please order carriages required (1, 2, 3, etc.) per rail.

For example: 1 x LRX65-480 and 2 x LRXD65-C (Carriages and tracks are produced to suit each individual set)

+44 (0)1246 455500
+44 (0)1246 455522

ondrives

sales@ondrives.com
www.ondrives.com

Product information updated 1st April 2011 and subject to change. Please contact Sales for the latest prices and availability.

LINEAR MOTION

LRX65
LRXD65
LRXDC65

Precision Linear Roller Way - Steel

Super X Series - Roller Retained - 4 Rows of Cylindrical Rollers

Performance

Dimension Variation Between Carriage Slides on Same Rail:

H = 0.015, N = 0.020

Parallelism in Operation Over:

500mm = 0.012mm

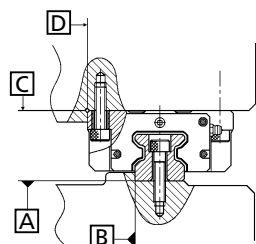
1000mm = 0.016mm

3000mm = 0.025mm

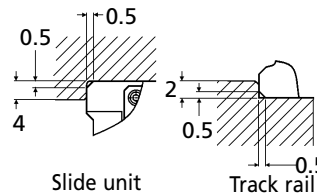
(A to C and D to B).

3 higher accuracy grades available.

P.O.A.



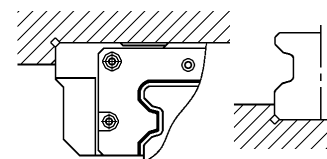
Mounting Example



Slide unit

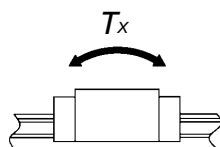
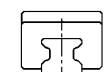
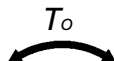
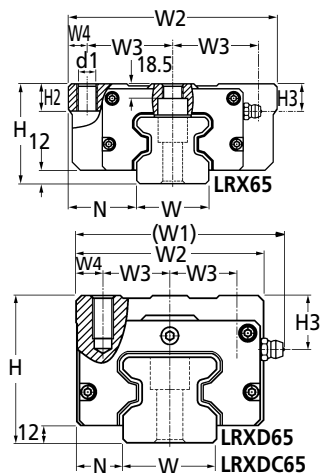
Track rail

Corner radius and shoulder heights of the mating reference mounting surfaces.



Relieved fillet at the corner of the mating reference mounting surfaces.

All faces of track are ground.



Figures shown in T_o column and upper figures of all T_x and T_y of each model number apply to one slide unit as illustrated above.

The higher figures below are for two slides in close contact on the same rail.

Extras

Preload available:

$T_1 = 0.02 C_o$

$T_2 = 0.05 C_o$

$T_3 = 0.08 C_o$

or zero - depends on stocking and availability.

	Part Number		
	LRX-65	LRXD-65	LRXDC-65
Dimensions of Slide Unit mm	FLANGED	STD. BLOCK	SHORT BLOCK
W1	-	136.00	136.00
W2	170.00	126.00	126.00
W3	71.00	38.00	38.00
W4	14.00	25.00	25.00
L1	245.00	245.00	181.00
L2	110.00	70.00	-
L3	159.00	159.00	95.00
L5	26.60	26.60	26.60
d1	14.50	-	-
M1	M16	M16 x 25	M16 x 25
H2	23.00	-	-
H3	18.00	18.00	18.00
Weight (kg)	11.50	8.70	5.52
Dimensions of Assembly mm			
H ± 0.04	90.00	90.00	90.00
N ± 0.05	53.50	53.50	53.50
M1 Bolt Tightening Torque (Nm)	263.00	263.00	263.00
Dimensions of Track Rail mm			
W	63.00	63.00	63.00
H4	56.00	56.00	56.00
d3	18.00	18.00	18.00
d4	26.00	26.00	26.00
h	22.00	22.00	22.00
E	75.00	75.00	75.00
F	150.00	150.00	150.00
Weight kg			
Track Rail per 100mm	22.60	22.60	22.60
Track Rail Mounting Bolt Bolt Tightening Torque (Nm)	M16 x 60 263.00	M16 x 60 263.00	M16 x 60 263.00
Basic Dynamic Load Rating			
C N	213000.00	213000.00	143000.00
Basic Static Load Rating			
C ₀ N	413000.00	413000.00	248000.00
Static Rated Moment			
T _o Nm	16200.00	16200.00	9740.00
T _x Nm T _y Nm	11200.00	11200.00	4180.00
	69000.00	69000.00	32000.00

LINEAR MOTION

Precision Linear Roller Way - Steel

Super X Series - Roller Retained - 4 Rows of Cylindrical Rollers

Preload

(varies depending on factory manufacture performance - can be supplied with specified preload but this may affect delivery)

Item Preload class	Symbol	Preload amount (N)	Application
Standard preload	none	0 §	<ul style="list-style-type: none">• Smooth and precise motion• Load is equally balanced• Minimum vibration
Light preload	T1	0.02 Co	<ul style="list-style-type: none">• Medium vibration• Medium overhung load
Medium preload	T2	0.05 Co	<ul style="list-style-type: none">• Vibration and/or shocks• Overhung load
Heavy preload	T3	0.08 Co	<ul style="list-style-type: none">• Vibration and/or shocks• Large overhung load• Heavy cutting

Average amount of preload is show in the table above.

In case high rigidity and/or damping are needed, the preload amount is recommended to be ½ of the external force. However, excessive preload will cause short life.

§ Zero or minimal amount of preload

Co = basic static load rating

Load Factor

Conditions	<i>fw</i>
Smooth operation free from vibration and/or shocks	1.0 ~ 1.2
Normal operation	1.2 ~ 1.5
Operation with shock loads	1.5 ~ 3.0

T
E
C
H
N
I
C
A
L

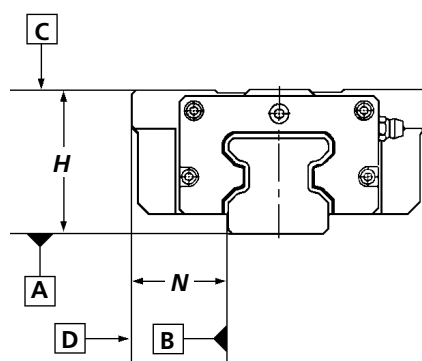
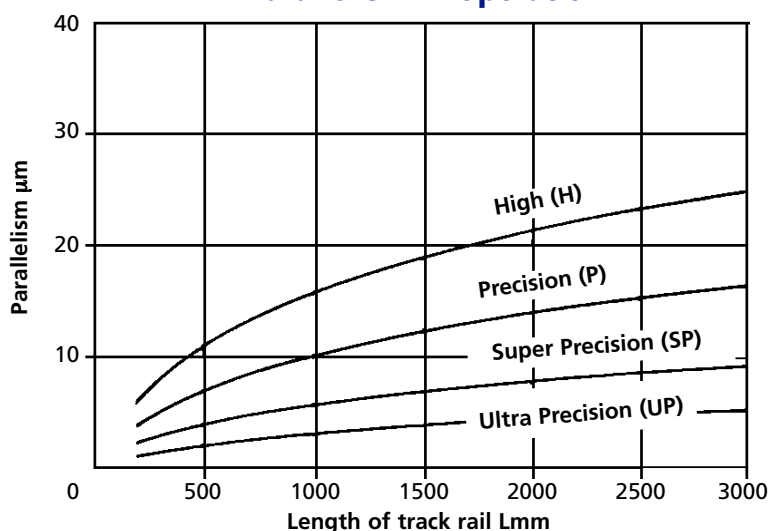
LINEAR MOTION

Precision Linear Roller Way - Steel

Super X Series - Roller Retained - 4 Rows of Cylindrical Rollers

	(STANDARD) HIGH (H)	PRECISION (P)	SUPER PRECISION (SP)	ULTRA PRECISION (UP)
Dim. H tolerance	± 0.040	± 0.020	± 0.010	± 0.008
Dim. N tolerance ⁽³⁾	± 0.050	± 0.025	± 0.015	± 0.010
Dim. variation of H ⁽¹⁾	0.015	0.007	0.005	0.003
Dim. variation of N ⁽²⁾⁽³⁾	0.020	0.010	0.007	0.003
Parallelism in operation of $\square C$ to $\square A$	See Graph			
Parallelism in operation of $\square D$ to $\square B$				

Parallelism in Operation



Note:

- (1) Dimensional variation of dimension H means the size variation between slide units mounted on the same track rail or on matched track rails when the dimension H is measured at the specified position of track rail.
- (2) Dimensional variation of dimension N means the size variation between slide units mounted on the same track rail when the dimension N is measured at the specified position of track rail.
- (3) These values also apply to the Linear Roller Way Super X series which have opposite reference surface arrangements.

All of the above figures are applicable when the dimensions are measured at the centre of each slide unit assembled with a track rail fixed onto a flat base.

L
A
C
I
N
H
C
E
T

LINEAR MOTION

Precision Linear Roller Way - Steel

Super X Series - Roller Retained - 4 Rows of Cylindrical Rollers

T
E
C
H
N
I
C
A
L

HIGH RIGIDITY

Rigidity of linear motion rolling guideways has a large influence on the performance of machines or equipment in which they are assembled. High rigidity of *Linear Roller Way Super X* has been achieved by incorporating a large number of rollers, which give a smaller amount of elastic deformation under load compared with balls.

WELL-BALANCED STRUCTURE

Four rows of rollers are arranged in good balance to take loads in any directions. The load ratings in upward, downward and lateral directions are equal. Also, this structure offers superior rigidity against a moment load, because the distance between the roller rows to take the moment load is made as large as possible.

SUPERIOR DAMPING CHARACTERISTIC

As the rigidity of *Linear Roller Way Super X* is high, deformation under repeated fluctuating loads is extremely small. Furthermore, damping characteristic is also superior.

HIGH LOAD CAPACITY

As the contact between the roller and the raceway is large compared with that between the ball and the raceway, the load capacity of roller type is larger than that of the ball type. A large number of rollers are incorporated to achieve very high load capacity.

SMOOTH AND QUIET MOTION

As an epoch-making structure for roller recirculating path is adopted, a small and quiet motion can be obtained.

REFERENCE MOUNTING SURFACE

The reference mounting surface of a slide unit of IKO Linear Roller Way Super X series is always the side surface opposite to the IKO mark. The reference mounting surface of track rail is identified by locating the IKO mark etched on the top surface of the track rail. The reference mounting surface is always the side surface pointed by the arrows besides the IKO mark. See **Diagram 1**.

LONG LIFE AND HIGH ACCURACY

The raceways are finished by precision grinding therefore, high accuracy and long life can be obtained. As the number of load carrying rollers is large, the minute deflection during operation can be minimised.

Table 1 - Rated life

SERIES NAME	RATED LIFE
LWL/CLWL LRX BSP/BSPG/BSR LSAG LBE	50 x 10 ³ m
CRW	100 x 10 ³ m

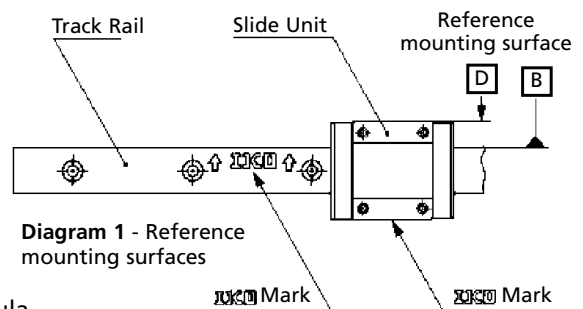


Table 2 - Applicable life calculation formula

Series Name	RATED LIFE		Symbols
	Unit : 10 ³ m	Unit : hours	
LWL/CLWL BSP/BSPG/BSR LSAG LBE	$L = 50 \left(\frac{C}{P}\right)^3 \dots\dots\dots(1)$	$L_h = \frac{10^6 L}{25n_1 \times 60} \dots\dots\dots(3)$	L : Rated life, 10 ³ m C : Basic dynamic load rating, kgf P : Applied load (dynamic equivalent load), kgf L _h : Rated life in hours, h S : Stroke length, mm n ₁ : Number of strokes per minute, cpm
LRX	$L = 50 \left(\frac{C}{P}\right)^{10/3} \dots\dots\dots(2)$		
CRW	$L = 100 \left(\frac{C}{P}\right)^3 \dots\dots\dots(3)$		

LINEAR MOTION

Precision Linear Roller Way - Steel

Super X Series - Roller Retained - 4 Rows of Cylindrical Rollers

LUBRICATION & DUST PROTECTION

The primary purpose of lubrication for linear motion rolling guides is to keep raceways, rolling elements and cages from direct metal-to-metal contact, thereby reducing wear and friction. The lubrication also reduces the development of wear and friction from a little sliding such as differential slip, skewing, spin, etc., and thereby prevents the heat generation or burning of rolling guides.

Since the performance of rolling guides will be influenced by the lubricant and lubrication method, it is necessary to select an adequate lubricant and adequate lubrication method in accordance with the type of guide, load, operating speed, etc. However, compared with conventional plain guides, the necessary amount of lubricant for rolling guides is much smaller and the interval between lubrication periods can be much longer - substantially reducing the cost and manpower for maintenance. Rolling guides may use either grease or oil for lubrication.

For grease lubrication, a lithium-soap base grease is commonly used. For rolling guides operating under heavy load, a grease containing extreme pressure additive is recommended. For oil lubrication, heavier loads require a higher viscosity oil. Higher operation speed requires lower viscosity.

For operation under heavy loads or high moment loads, a lubricating oil of around 68 cSt may be successfully used. For lighter loads or higher operation speed, or where extremely smooth movement is required, a lower viscosity oil around 13 cSt may be employed.

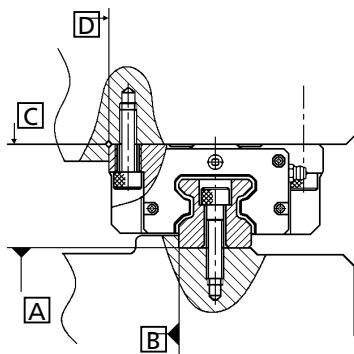


Diagram 2 - Mounting example

PRECAUTIONS FOR USE

When using multiple slide units in close distance to each other, the actual load may be greater than the calculated load depending on the accuracy of the mounting surface and the reference mounting surface of the machine. It is suggested in such cases to assume a greater actual load into consideration.

EXAMPLE OF MOUNTING IN GENERAL APPLICATION

As shown in the **Diagram 2** below mounting surfaces B and D and the mounting surfaces A and C are precisely finished by grinding. Therefore, a stable linear motion of high accuracy will be obtained by precise finishing of the mounting surfaces of the machine and correct mounting on those surfaces. It is recommended to make a relieved fillet at the corner of the mating reference mounting surfaces as shown in **Diagram 6**. However, the corner radius somewhat less than R values can also be used.

MOUNTING BOLT TIGHTENING TORQUE

According to the material of mating parts and the magnitude and direction of external forces, increase the amount of tightening torque.

OPERATING TEMPERATURE

A continuous operation is possible at temperatures up to 100°C.

CAUTION IN HANDLING

When handling *Linear Roller Way Super X series*, handle them with care. Especially when the slide unit is stroked. Do not put fingers into the mounting holes of track rail which may give rise to serious trouble.

STATIC RATED MOMENT

The static rated moment is defined as a static moment load, see **Diagram 3** that gives a prescribed constant contact stress at the centre of the contact area between rolling elements and raceways receiving maximum load.

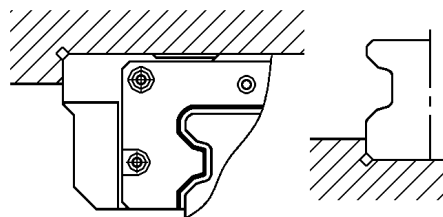


Diagram 3 - Relieved fillet at the corner of the mating reference mounting surfaces