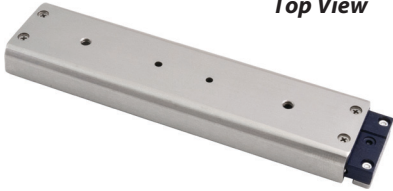
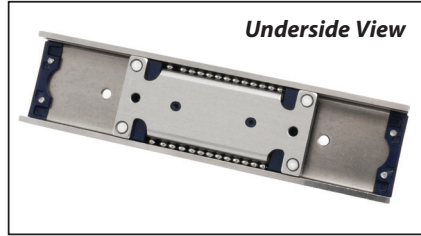


BSR-SL

LINEAR MOTION

Precision Linear Slide Units - Stainless

Recirculating Ball Type - Endless Linear Motion

Top View**Underside View**

Part Number	Weight g	NOMINAL DIMENSIONS mm			Max. Stroke Length	DIMENSIONS OF SLIDE UNIT mm					
		W	H	L		w	L0	L1	M1	s1	t1
BSR1230SL (1)	5.80	12	4.50	30	13	9.80	21.50	15	M2	1.30	0.90
BSR1240SL (1)	7.00	12	4.50	40	23	9.80	21.50	15	M2	1.30	0.90
BSR1250SL (1)	8.20	12	4.50	50	33	9.80	21.50	15	M2	1.30	0.90
BSR1260SL (1)	9.30	12	4.50	60	43	9.80	21.50	15	M2	1.30	0.90
BSR1530SL (2)	12.60	15	8.00	30	10	12.20	30.00	24	M3	1.80	1.00
BSR1540SL	14.80	15	8.00	40	20	12.20	30.00	24	M3	1.80	1.00
BSR1550SL	17.10	15	8.00	50	30	12.20	30.00	24	M3	1.80	1.00
BSR1560SL	19.30	15	8.00	60	40	12.20	30.00	24	M3	1.80	1.00
BSR2040SL (2)	27.60	20	10.00	40	12	16.80	40.00	32	M3	2.20	1.40
BSR2050SL	31.10	20	10.00	50	22	16.80	40.00	32	M3	2.20	1.40
BSR2060SL	34.60	20	10.00	60	32	16.80	40.00	32	M3	2.20	1.40
BSR2070SL	38.10	20	10.00	70	42	16.80	40.00	32	M3	2.20	1.40
BSR2080SL	41.60	20	10.00	80	52	16.80	40.00	32	M3	2.20	1.40
BSR2570SL	53.80	25	10.00	70	33	21.40	50.00	42	M3	2.40	1.60
BSR2580SL	58.40	25	10.00	80	43	21.40	50.00	42	M3	2.40	1.60
BSR25100SL	67.40	25	10.00	100	63	21.40	50.00	42	M3	2.40	1.60

(1) When mounting BSR1230SL~BSR1260SL track rail with screws that are one size smaller than the female threads by inserting the screws through the female thread holes, consult our technical department.

(2) BSR1530SL & BSR2040SL can not be mounted from inside of the track rail.

Material

Slides: Stainless Steel. **Retainer:** Synthetic resin.

Performance

Max. Speed: 0.5 m/sec (30 m/min). **Temperature:** +100°C (constant) +120°C (maximum)

Other Info.

The BSR precision Linear Slide series is a lightweight and compact linear motion rolling guide made of stainless steel formed precisely to be U-shaped table or track rail. The Precision Linear Slide series features high performance and durability, making this series suitable for scanning or writing heads of memory storage devices such as hard disk drives. The series is also widely applicable for measuring equipment, IC manufacturing and inspection devices etc. To obtain consistently high accuracy in operation, do not exceed 20% of the basic static load rating. The BSR Type is recommended when it is difficult to calibrate the position of the retainer in the BSP Type. Sensitive to external contaminants, so it is recommended that any dirt should be washed out with a suitable cleaning agent. In order to ensure smooth motion, a high grade lubricant should be reapplied to the raceway and balls.



+44 (0)1246 455500



+44 (0)1246 455522

ondrives



sales@ondrives.com



www.ondrives.com

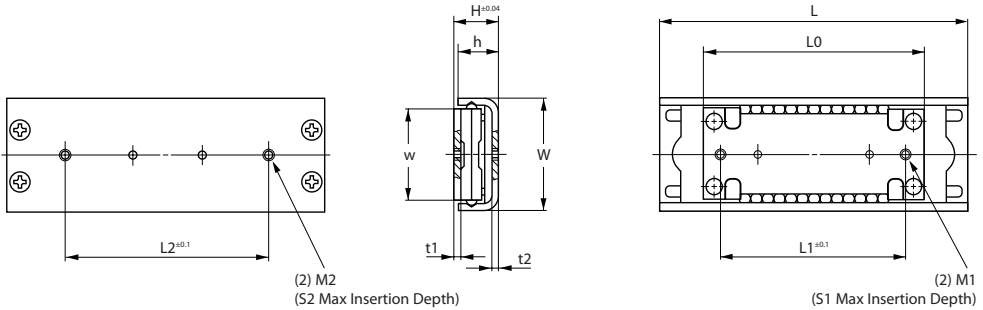
Product information updated 22nd December 2011 and subject to change. Please contact Sales for the latest prices and availability.

LINEAR MOTION

Precision Linear Slide Units - Stainless

Recirculating Ball Type - Endless Linear Motion

BSR-SL



DIMENSIONS OF TRACK RAIL mm					Basic Dynamic Load Rating C _N	Basic Static Load Rating C ₀ N	Price Each
L2	M2	s2	h	t2			
15	M2	1.60	4	0.90	183	139	£46.89
20	M2	1.60	4	0.90	183	139	£52.50
34	M2	1.60	4	0.90	183	139	£58.04
40	M2	1.60	4	0.90	183	139	£63.66
14	M3	3.00	7	1.20	466	309	£42.99
24	M3	3.00	7	1.20	466	309	£46.29
34	M3	3.00	7	1.20	466	309	£52.95
40	M3	3.00	7	1.20	466	309	£59.50
24	M3	3.50	9	1.40	790	548	£56.08
34	M3	3.50	9	1.40	790	548	£66.02
40	M3	3.50	9	1.40	790	548	£72.67
45	M3	3.50	9	1.40	790	548	£79.31
50	M3	3.50	9	1.40	790	548	£89.28
45	M3	3.50	9	1.60	1000	768	£95.82
50	M3	3.50	9	1.60	1000	768	£105.69
60	M3	3.50	9	1.60	1000	768	£125.43

Other Info. (continued)

This model features a special synthetic resin circulator to recirculate the balls, permitting longer stroke lengths with low noise. For track rails over the lengths mentioned in the dimension table, consult Ondrives.

For temperatures over 100°C we can supply special high temperature grease (200°C - supplied in syringe) **CG2-SY : £31.80**



+44 (0)1246 455500



+44 (0)1246 455522

ondrives



sales@ondrives.com



www.ondrives.com

Product information updated 22nd December 2011 and subject to change. Please contact Sales for the latest prices and availability.