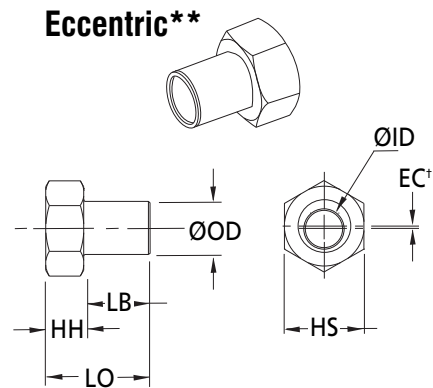
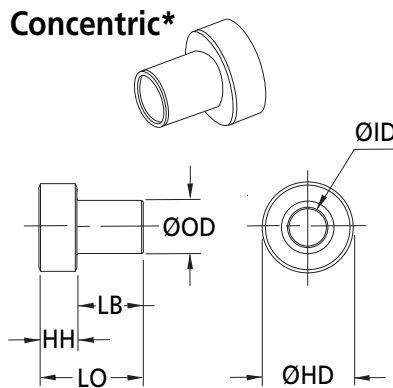
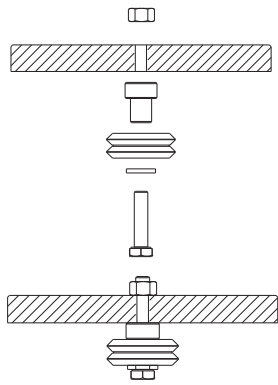
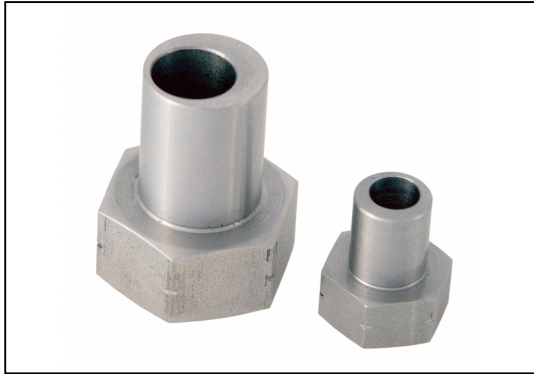


**BM**  
**BMX**

# LINEAR MOTION

## Dual Vee™ Single Edge Slide System

Support Bushings (Standard Profile)



Part Number		Dual Vee Size	Fastener Size	Hex Size HS	Offset EC†	Head Height HH(1)	Length Body LB	Length Overall LO	Outside Dia. OD(2)	Inside Dia. ID	Head Dia. HD	Price Each Steel	Price Each Stainless
<b>Concentric:</b>													
BM-1	BM-1SS	1	M4	-	-	6.22	7.6	13.8	4.76	4.01	11.2	£4.67	£8.09
BM-2	BM-2SS	2	M6	-	-	6.65	10.8	17.9	9.52	6.10	14.2	£5.35	£10.71
BM-3	BM-3SS	3	M8	-	-	9.47	15.6	25.1	11.99	8.10	19.1	£8.28	£15.47
BM-4	BM-4SS	4	M10	-	-	11.10	18.8	29.9	15.00	10.11	22.4	£9.05	£24.32
<b>Eccentric:</b>													
BMX-1	BMX-1SS	1	M4	12	0.18	6.22	7.6	13.8	4.76	4.01	-	£8.76	£16.53
BMX-2	BMX-2SS	2	M6	14	0.61	6.65	10.8	17.9	9.52	6.10	-	£9.53	£19.82
BMX-3	BMX-3SS	3	M8	19	1.07	9.47	15.6	25.1	11.99	8.10	-	£13.51	£27.26
BMX-4	BMX-4SS	4	M10	22	1.52	11.10	18.8	29.9	15.00	10.11	-	£14.92	£36.46

**Notes:**

- \* Concentric (stationary) bushing - since concentrically mounted wheels have a fixed position, these bushings set the alignment of the carriage assembly to the rail. Concentrically mounted wheels should be configured to carry the majority of the load whenever possible.
- \*\* Eccentric (adjustable) bushing - rotation of eccentric allows adjustment between track and guide wheels.
- † All mounting information assumes a central position of the eccentric bushing, thus allowing wheel position adjustment from "+EC" to "-EC".
- (1) Head height (HH) Tolerance is ±0.05mm.
- (2) The bushing's outside diameter is designed to fit the corresponding size Dual Vee™ guide wheel.

**Material**

**Bushings:** Leaded screw stock, plated finish or stainless steel.  
**BMX:** Adjustable bushing. Eccentric mounting hole. By rotating the BMX bushing on its mounting bolt, the clearance between the wheel and the track can be adjusted.  
**BM:** Stationary bushing. Concentric mounting hole. The major load should be carried on the stationary bushing.

**Features (Support Bushings)**

- Rigidly affixes guide wheels to a mounting surface precisely.
- Material options include 303 stainless steel or nickel plated carbon steel.
- Concentric and eccentric configurations allow for system adjustment.
- Customer to supply screw/bolt to fix wheel bush assembly to mounting surface.
- Standard and low profile head height configurations are available to suit space requirements.
- Head Height (HH) Tolerance is ±0.05mm.
- Outside diameter of bushing is designed to fit the corresponding size Dual Vee™ guide wheel.

+44 (0)1246 455500  
+44 (0)1246 455522

**ondrives**

sales@ondrives.com  
www.ondrives.com

Product information updated 1st April 2011 and subject to change. Please contact Sales for the latest prices and availability.