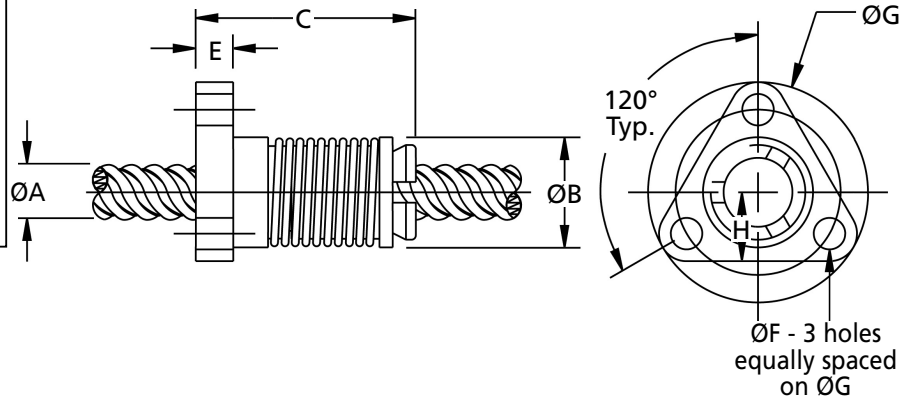


ZBX

LINEAR MOTION

Precision Leadscrew Assemblies

Anti-Backlash Nut & Leadscrew

**Discounts: 5+ -4% 10+ -10% 25+ -15%**

Part Number	No. of Starts	Screw ØA	Nut ØB	Nut Length C	Flange ØD	Flange Width E	Mount Hole ØF	Bolt ØG	H	Metric Lead	Drag Torque Nm	Design Load kg	Efficiency	Root Ø	Price Each 1 - 4	
															A 300mm	B 600mm
ZBX4M01	1	6.35	12.70	25.40	25.40	4.57	3.63	19.05	7.935	1.00	0.007-0.030	2	41%	4.82	£142.15	£170.97
ZBX4M01.5	1	6.35	12.70	25.40	25.40	4.57	3.63	19.05	7.935	1.50	0.007-0.030	2	51%	4.37	£142.15	£170.97
ZBX4M02	1	6.35	12.70	25.40	25.40	4.57	3.63	19.05	7.935	2.00	0.007-0.030	2	59%	4.32	£142.15	£170.97
ZBX4M03	2	6.35	12.70	25.40	25.40	4.57	3.63	19.05	7.935	3.00	0.007-0.030	2	68%	4.32	£142.15	£170.97
ZBX4M10	5	6.35	12.70	25.40	25.40	4.57	3.63	19.05	7.935	10.00	0.007-0.030	2	75%	4.32	£142.15	£170.97
ZBX6M01.4	1	9.53	17.78	48.26	38.10	4.57	5.08	28.58	11.900	1.40	0.014-0.035	5	36%	7.69	£147.90	£182.47
ZBX6M02	1	9.53	17.78	48.26	38.10	4.57	5.08	28.58	11.900	2.00	0.014-0.035	5	47%	6.76	£147.90	£182.47
ZBX6M04	2	9.53	17.78	48.26	38.10	4.57	5.08	28.58	11.900	4.00	0.014-0.035	5	65%	6.96	£147.90	£182.47
ZBX6M05	2	9.53	17.78	48.26	38.10	4.57	5.08	28.58	11.900	5.00	0.014-0.035	5	69%	6.76	£147.90	£182.47
ZBX6M12	5	9.53	17.78	48.26	38.10	4.57	5.08	28.58	11.900	12.00	0.014-0.035	5	82%	7.29	£147.90	£182.47
ZBX6M25	8	9.53	17.78	48.26	38.10	4.57	5.08	28.58	11.900	25.00	0.014-0.035	5	84%	6.60	£147.90	£182.47
ZBX7M02	1	11.11	20.32	48.26	38.10	4.57	5.08	28.58	11.900	2.00	0.021-0.042	7	45%	9.50	£147.90	£194.01
ZBX7M03	2	11.11	20.32	48.26	38.10	4.57	5.08	28.58	11.900	3.00	0.021-0.042	7	52%	7.82	£147.90	£194.01
ZBX7M05	2	11.11	20.32	48.26	38.10	4.57	5.08	28.58	11.900	5.00	0.021-0.042	7	65%	7.95	£147.90	£194.01
ZBX7M06	2	11.11	20.32	48.26	38.10	4.57	5.08	28.58	11.900	6.00	0.021-0.042	7	70%	7.95	£147.90	£194.01
ZBX7M10	4	11.11	20.32	48.26	38.10	4.57	5.08	28.58	11.900	10.00	0.021-0.042	7	77%	7.95	£147.90	£194.01
ZBX7M12	4	11.11	20.32	48.26	38.10	4.57	5.08	28.58	11.900	12.00	0.021-0.042	7	80%	8.26	£147.90	£194.01
ZBX8M02.5	1	12.70	22.61	50.80	41.15	6.60	5.08	31.75	12.660	2.50	0.021-0.042	11	46%	9.65	£169.02	£217.08
ZBX8M04	2	12.70	22.61	50.80	41.15	6.60	5.08	31.75	12.660	4.00	0.021-0.042	11	58%	9.75	£169.02	£217.08
ZBX8M05	2	12.70	22.61	50.80	41.15	6.60	5.08	31.75	12.660	5.00	0.021-0.042	11	62%	9.27	£169.02	£217.08
ZBX8M10	4	12.70	22.61	50.80	41.15	6.60	5.08	31.75	12.660	10.00	0.021-0.042	11	76%	9.19	£169.02	£217.08
ZBX8M25	8	12.70	22.61	50.80	41.15	6.60	5.08	31.75	12.660	25.00	0.021-0.042	11	84%	9.45	£169.02	£217.08
ZBX10M08	3	15.88	26.99	50.80	44.45	6.60	5.08	34.93	13.515	8.00	0.030-0.050	16	68%	12.52	£211.30	£293.94

Material

Nut: Self-lubricating Acetal **Leadscrew:** 303 Stainless Steel with TFE extended life coating

Performance

Positional Repeatability: 0.0013mm **Lead Accuracy:** 0.0006mm/mm

Other Info.

Designed for operations requiring precise positional accuracy and repeatability, with minimum cost. Utilises a patented self-lubricating polyacetal nut radially preloaded on a 303 stainless steel screw. Offers exceptional torque consistency and repeatability when traversing in either direction. Ideally suited for vertical applications requiring noise or vibration control.

When ordering add to the part number:-

for 300mm long add A

for 600mm long add B

+44 (0)1246 455500

+44 (0)1246 455522

ondrives

sales@ondrives.com

www.ondrives.com

Product information updated 1st April 2011 and subject to change. Please contact Sales for the latest prices and availability.