

LINEAR MOTION

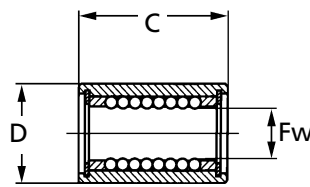
LB-M
LBE-M

Miniature Linear Bearings

For Use with Linear Shafting : 3 - 5mm Bores

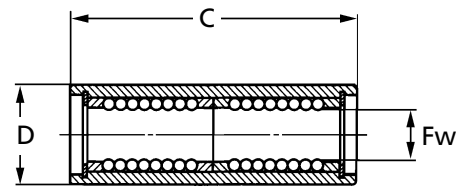


Short Version

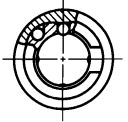


LBE...M
LB...M

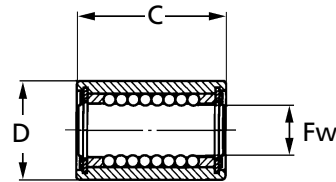
Long Version



LBEL...M
LBL...M

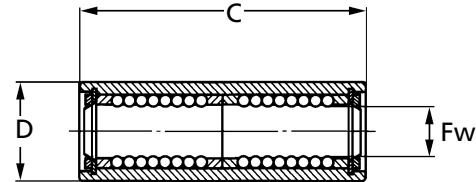


Short Version (seal) P.O.A.



LBE...MUU
LB...MUU

Long Version (seal) P.O.A.



LBEL...MUU
LBL...MUU



Part Number	Stainless	Steel	Shaft Dia. mm	Ball Circuits	Weight g	Max. Eccentricity μm		BASIC DYNAMIC LOAD RATING - C		BASIC STATIC LOAD RATING - Co	
						Precision (P.O.A.)	High (Std.)	Load Direction A N	Load Direction B N	Load Direction A N	Load Direction B N
LB3M		LBE3M	3	4	1.8	2	4	18.4	21.2	39.4	55.8
LBL3M		LBEL3M	3	4	3.0	-	5	30.0	34.4	78.9	112.0
LB4M		LBE4M	4	4	2.8	2	4	23.5	27.0	48.6	68.7
LBL4M		LBEL4M	4	4	4.3	-	5	38.1	43.8	97.2	137.0
LB5M		LBE5M	5	4	3.8	2	4	51.3	59.0	108.0	152.0
LBL5M		LBEL5M	5	4	6.7	-	5	83.4	95.8	215.0	304.0

Discounts: 6+ -10% | 10+ -15% | 20+ -20% | 50+ -25%

Part Number	Stainless	Steel	Fw	Tolerance μm		D	Tolerance μm		C	Tolerance μm		Price Each 1 - 5	
				Precision (P.O.A.)	High (Std.)		Precision (P.O.A.)	High (Std.)		Precision (P.O.A.)	High (Std.)	Stainless	Steel
LB3M		LBE3M	3	0/-5	0/-8	7	0/-7	0/-8	10	0/-120	0/-120	£86.15	£49.06
LBL3M		LBEL3M	3	-	0/-10	7	-	0/-13	19	0/-300	0/-300	£154.83	£105.89
LB4M		LBE4M	4	0/-5	0/-8	8	0/-7	0/-8	12	0/-120	0/-120	£68.10	£41.18
LBL4M		LBEL4M	4	-	0/-10	8	-	0/-13	23	0/-300	0/-300	£125.31	£77.88
LB5M		LBE5M	5	0/-5	0/-8	10	0/-7	0/-8	15	0/-120	0/-120	£67.42	£38.15
LBL5M		LBEL5M	5	-	0/-10	10	-	0/-13	29	0/-300	0/-300	£121.48	£72.25

Material

LB-M: Hard Stainless Steel similar to 440C with resin (plastic) ball retainer.

LBE-M: Hard Steel with resin (plastic) ball retainer.

LB-MUU & LBE-MUU: As above with seals (add 20% to price). Minimum order quantities of 20 (short) and 10 (long) apply.

Performance

Recommended Fit: Shaft (58-64 HRC) = $-6\mu\text{m}$ to $-14\mu\text{m}$ | Housing = $+12\mu\text{m}$ to 0
Precision Fit: Shaft (58-64 HRC) = $-4\mu\text{m}$ to $-9\mu\text{m}$ | Housing = $+8\mu\text{m}$ to 0

Extras

Shafting (all over h6 tolerance - polishing down may be required to achieve running tolerance):

	Price per 300mm		Price per 1000mm:
Z-3-300A	£66.66	Z-5-1000A	£23.40
Z-3-300B	£84.87	Z-5-1000B	£75.23
Z-4-300A	£52.11		

+44 (0)1246 455500
+44 (0)1246 455522

ondrives

sales@ondrives.com
www.ondrives.com

Product information updated 1st April 2011 and subject to change. Please contact Sales for the latest prices and availability.