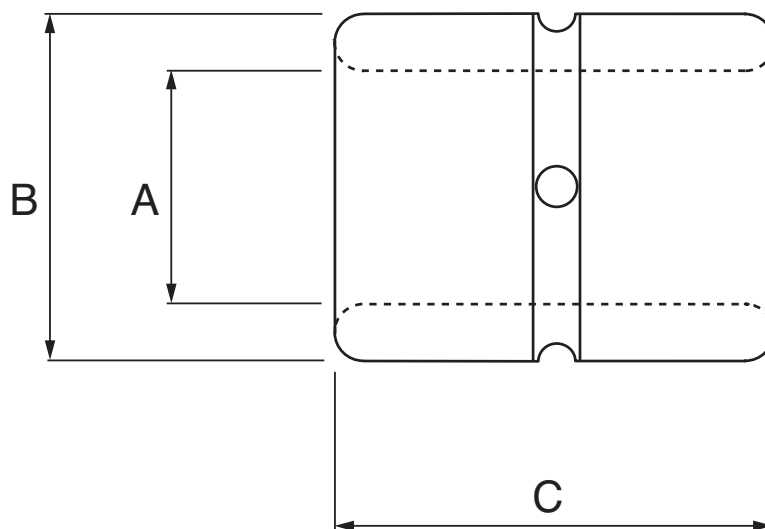
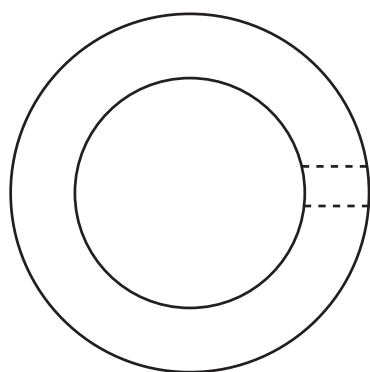
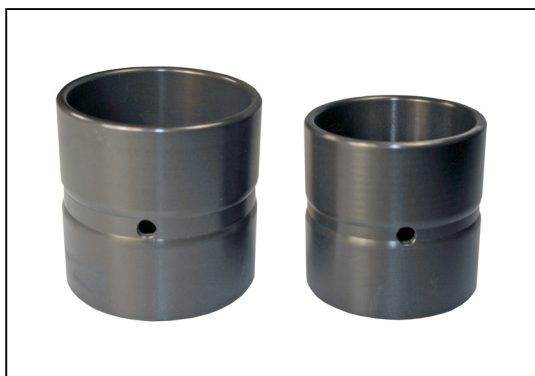


L-TWM-C

LINEAR MOTION

Closed Thin-Walled Metric Bearings

Ceramic (Requires Lubrication)



Load / Speed

PSI	PV	SFM	Shaft Hardness	Coefficient of Friction	Temperature Range
5000	40,000	Unlimited [†]	RC60 (Must be Lubricated)	0.04 - 0.08	+200°C to -130°C

[†] No application has been encountered where properly lubricated ceramic bearings have failed due to speed. Moreover, they are commonly used in rocket sledge/crash test systems where they exceed 120gs acceleration.

Part Number	ØA	ØB	C h14	Max. Shaft Dia. (h6 or h7)	Housing Bore Dia H7	Price Each
L6TWM-C	6 ^{+0.038} / _{+0.065}	12	22	6	12	£8.65
L8TWM-C	8 ^{+0.038} / _{+0.065}	15	24	8	15	£8.65
L10TWM-C	10 ^{+0.038} / _{+0.065}	17	26	10	17	£9.80
L12TWM-C	12 ^{+0.038} / _{+0.065}	19	28	12	19	£10.25
L14TWM-C	14 ^{+0.038} / _{+0.065}	21	28	14	21	£9.43
L16TWM-C	16 ^{+0.038} / _{+0.065}	24	30	16	24	£9.73
L20TWM-C	20 ^{+0.047} / _{+0.074}	28	30	20	28	£9.95
L25TWM-C	25 ^{+0.047} / _{+0.074}	35	40	25	35	£14.51
L30TWM-C	30 ^{+0.047} / _{+0.074}	40	50	30	40	£18.49
L40TWM-C	40 ^{+0.049} / _{+0.089}	52	60	40	52	£27.30
L50TWM-C	50 ^{+0.049} / _{+0.089}	62	70	50	62	£42.24

Material

Ceramic coated aluminium

Options

Certain sizes are also available in Stainless Steel.
Contact sales for further information.

+44 (0)1246 455500
+44 (0)1246 455522

ondrives

sales@ondrives.com
www.ondrives.com

Product information updated 1st April 2011 and subject to change. Please contact Sales for the latest prices and availability.