

L  
LX

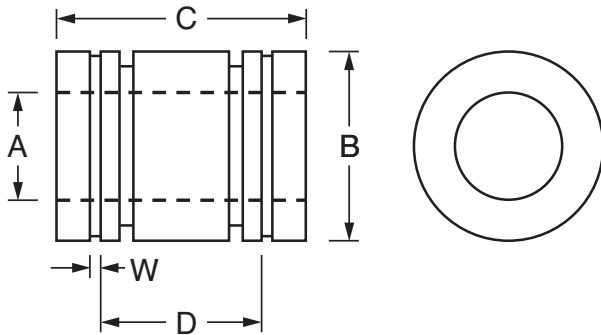
# LINEAR MOTION

## Open and Closed Metric Bearings

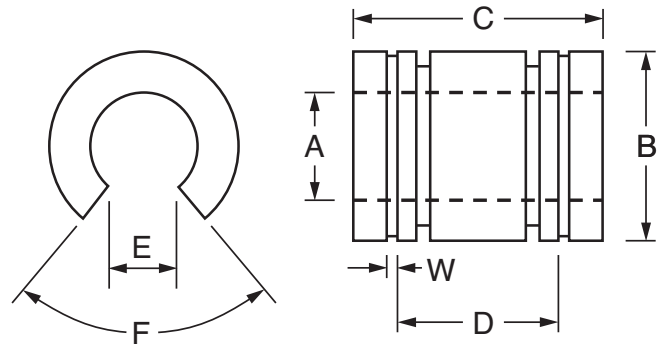
Ceramic (Requires Lubrication)



Closed Type



Open Type



### Load / Speed

PSI	PV	SFM	Shaft Hardness	Coefficient of Friction	Temperature Range
5000	40,000	Unlimited <sup>†</sup>	RC60 (Must be Lubricated)	0.04 - 0.08	+200°C to -130°C

<sup>†</sup> No application has been encountered where properly lubricated ceramic bearings have failed due to speed. Moreover, they are commonly used in rocket sledge/crash test systems where they exceed 120gs acceleration.

Part Number		ØA	ØB h7	C h14	D	W	Max. Shaft Dia. (h6 or h7)	Housing Bore Dia. H7	Open Slot (LX only)		Price Each	
Closed	Open								Width E	Angle F	Closed	Open
L5-C	-	5 <sup>+0.038</sup> / <sub>+0.065</sub>	12	22	12	1.10	5	12	-	-	£12.99	-
L8-C	-	8 <sup>+0.038</sup> / <sub>+0.065</sub>	16	25	14	1.10	8	16	-	-	£13.28	-
L12-C	LX12-C	12 <sup>+0.038</sup> / <sub>+0.065</sub>	22	32	20	1.30	12	22	7.6	78°	£14.07	£15.16
L16-C	LX16-C	16 <sup>+0.038</sup> / <sub>+0.065</sub>	26	36	22	1.30	16	26	10.8	78°	£14.29	£17.02
L20-C	LX20-C	20 <sup>+0.047</sup> / <sub>+0.074</sub>	32	45	28	1.60	20	32	10.8	60°	£14.51	£19.04
L25-C	LX25-C	25 <sup>+0.047</sup> / <sub>+0.074</sub>	40	58	40	1.85	25	40	13.2	60°	£17.96	£22.74
L30-C	LX30-C	30 <sup>+0.047</sup> / <sub>+0.074</sub>	47	68	48	1.85	30	47	14.2	50°	£31.41	£36.40
L40-C	LX40-C	40 <sup>+0.049</sup> / <sub>+0.089</sub>	62	80	56	2.15	40	62	18.7	50°	£39.42	£47.68
L50-C	LX50-C	50 <sup>+0.049</sup> / <sub>+0.089</sub>	75	100	72	2.65	50	75	23.6	50°	£55.26	£69.34
L60-C	LX60-C	60 <sup>+0.049</sup> / <sub>+0.089</sub>	90	125	95	3.20	60	90	29.6	54°	£80.18	£130.04
L80-C	LX80-C	80 <sup>+0.122</sup> / <sub>+0.173</sub>	120	165	125	4.20	80	120	38.4	54°	£195.06	£307.78

### Material:

Ceramic coated aluminium

### Options

- Available with or without seals.
  - Counterbores for seals are available on ceramic versions only.
  - Self-aligning bearings are available on request.
- Note:** Please contact sales for further information on any of these options.

+44 (0)1246 455500  
+44 (0)1246 455522

**ondrives**

sales@ondrives.com  
www.ondrives.com

Product information updated 1st April 2011 and subject to change. Please contact Sales for the latest prices and availability.