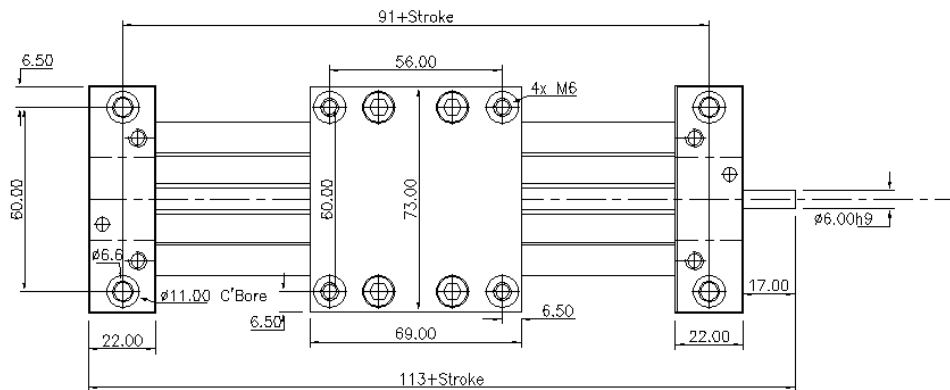
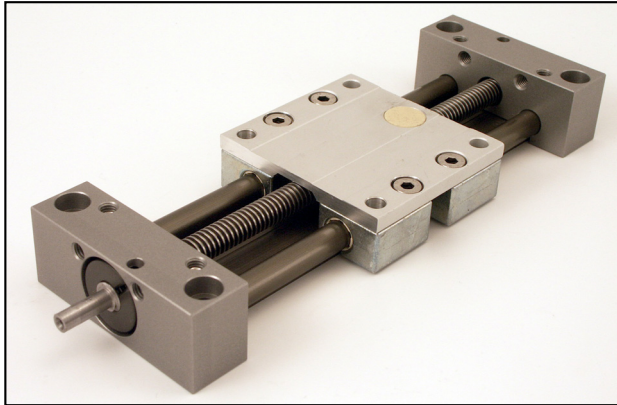


SLW

LINEAR MOTION

Leadscrew Actuator

Extremely Low Profile Linear Unit : 2mm Lead, 100 - 1000mm Stroke

**Discounts: 20+ -5% 40+ -10% 60+ -15% 100+ -20% 200+ -35%**

Part Number	Lead : Travel per rev. of leadscrew	Stroke	Max Leadscrew Speed Rpm	Max Linear Speed m/min	Price Each 1 - 5
SLW1040-100	2	100	500	1	£252.55
SLW1040-250	2	250	500	1	£288.93
SLW1040-500	2	500	500	1	£325.32
SLW1040-1000	2	1000	500	1	£416.30

Material

Rail, Carriage Plate & End Blocks: Aluminium. Carriage Blocks: Die cast Zinc.

Leadscrew: Steel. Bearings: Self Lubricating DryLin Plastic.

Performance

Leadscrew Pitch: 2mm.

Max Permissible Radial Load: 2,800 N (Static), 2,000 N (Dynamic).

Max Permissible Thrust Load: 700 N (Static), 0.23 MPa x m/s (Dynamic Trapezoidal Leadscrew), 0.08MPa x m/s (Axial Bearing).

Advantages

Linear Module for adjustment and handling tasks.

The compact, low profile aluminium body guarantees extreme stiffness.

All bearing units are equipped with maintenance free iglidur® materials, which results in complete freedom from lubrication.

The system works reliably under extreme environmental conditions like dust, dirt and humidity.

The stepless drive can be manually operated or motor driven.

+44 (0)1246 455500

+44 (0)1246 455522

ondrives

sales@ondrives.com

www.ondrives.com

Product information updated 1st April 2011 and subject to change. Please contact Sales for the latest prices and availability.