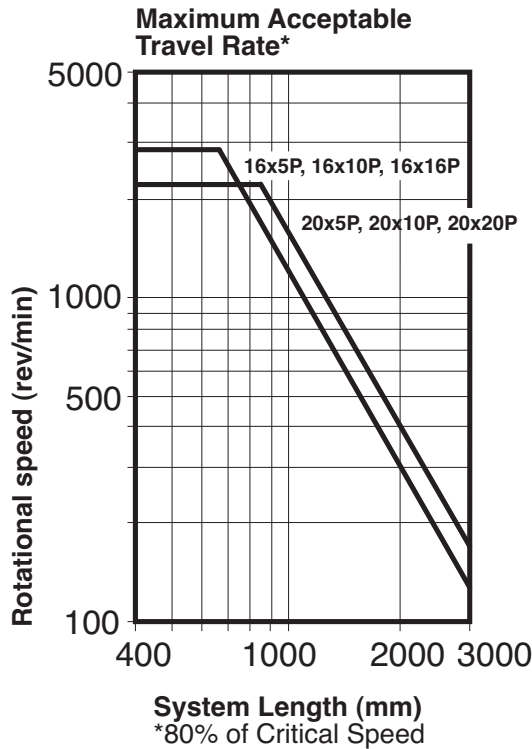


LINEAR MOTION

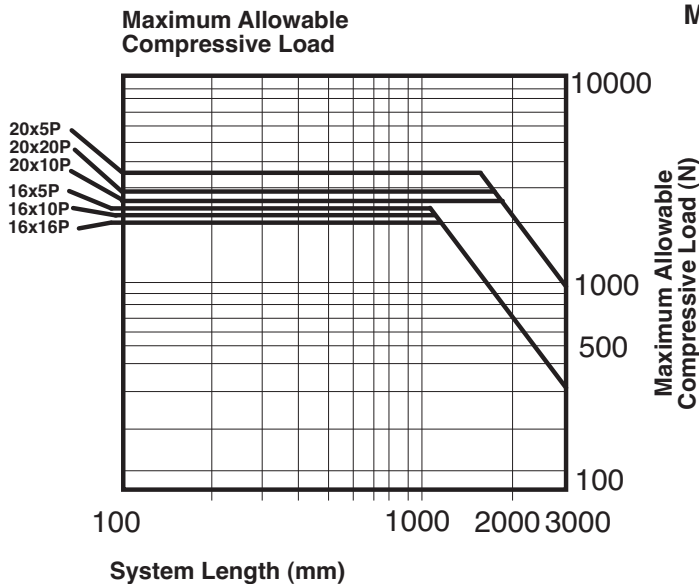
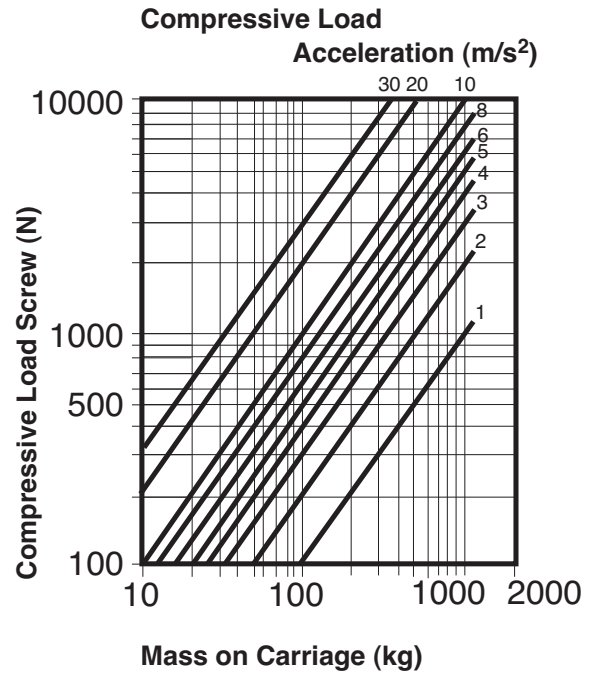
SuperSlide™ - Continuously Supported System

TECHNICAL



The SuperSlide has a pre-designed maximum acceptable travel rate. Calculate maximum rotational speed (rpm) by dividing your required maximum linear speed (m/s) by the corresponding system ball screw lead (m/rev). Enter the chart with the required system length and your maximum rotational speed. Select the system with a maximum acceptable travel rate curve above the plotted line.

Compressive Load on the ball screw is a key factor in selecting the proper system. Using maximum load and acceleration requirements, plot compressive load on the left side of the chart. Using system length and compressive load plot the maximum allowable compressive force on the right chart. Select the system with a rated maximum compressive force above your plotted point.



If you have any questions concerning your system requirements, contact our sales department.

Note: Ball screw should never exceed recommended critical speed.

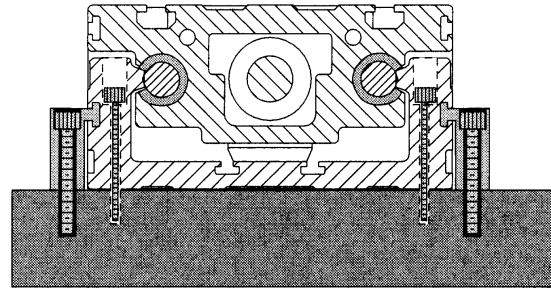
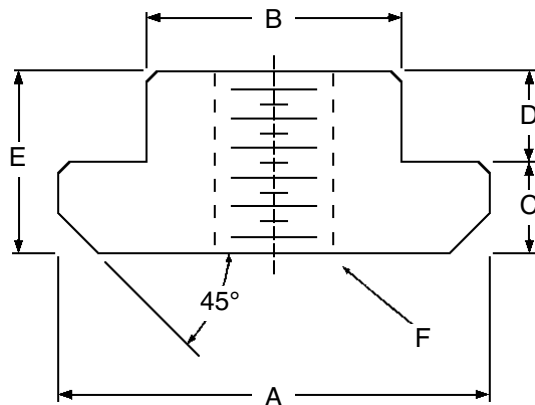
LINEAR MOTION

SuperSlide™ - Continuously Supported System

Nuts and Bellows Accessories

**TNUT
BEL**

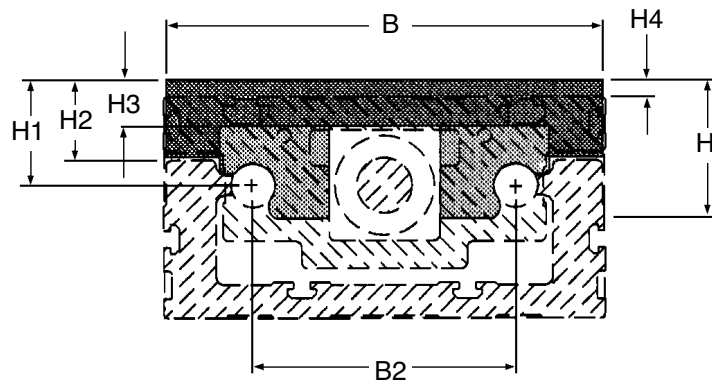
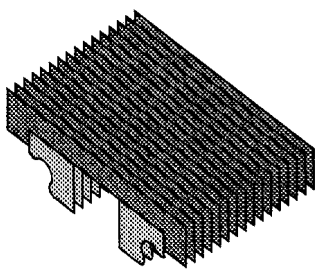
T-Nuts for Mounting



Discounts: 5+ -10%

Part Number	A	B	C	D	E	F	Price Each 1 - 4
TNUT-01-M3	7.0	4.0	1.75	1.25	3.0	M3	£12.37
TNUT-02-M4	9.5	5.5	2.25	1.75	4.0	M4	£12.37
TNUT-03-M5	12.0	7.0	2.50	2.50	5.0	M5	£12.37
TNUT-04-M4	16.5	7.9	4.80	1.20	6.0	M4	£11.14
TNUT-04-M5	16.5	7.9	4.80	1.20	6.0	M5	£11.14
TNUT-04-M6	16.5	7.9	4.80	1.20	6.0	M6	£11.14
TNUT-05-M4	19.5	9.8	5.80	2.80	8.6	M4	£11.14
TNUT-05-M5	19.5	9.8	5.80	2.80	8.6	M5	£11.14
TNUT-05-M6	19.5	9.8	5.80	2.80	8.6	M6	£11.14
TNUT-05-M8	19.5	9.8	5.80	2.80	8.6	M8	£11.14

Protective Bellows



Protective Bellows

Way Covers (Note: these must be ordered when ordering the system as extra machining is required on the slide unit).

Discounts: 5+ -10%

Part Number	Nominal Shaft Dia.	B	B2	H	H1	H2	H3	H4	Price Each 1 - 4
BEL-2R-12	12	128	75	48	37	29	15	12	£P.O.A
BEL-2R-16	16	158	95	52	42	30	15	10	£P.O.A

The SuperSlide™ 2RB Ball Screw Drive System can be mounted using the T-Nuts and T-slots with clamping fixtures as shown above. In addition, SuperSlide™ Ball Screw Systems 2RB can be mounted using the bolt down attachment holes found in each system support base. For other mounting fixity, please contact Sales. These parts are POA on their own as they are normally included in the price of the SuperSlide assembly.

+44 (0)1246 455500
+44 (0)1246 455522

ondrives

sales@ondrives.com
www.ondrives.com

Product information updated 1st April 2011 and subject to change. Please contact Sales for the latest prices and availability.