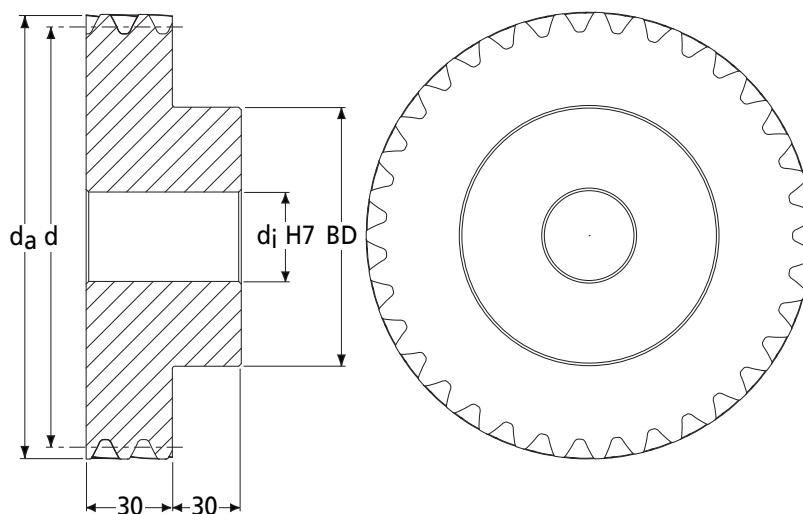


PXHG
3.0m_n

PRECISION GEARS

3.0 Module 45° Crossed Helical Gear α 20° PA

Quality Grade 7e25 DIN 3961/3967 (AGMA Q10)



DIN 3967 Tooth Thickness tol.

Part Number	No. of Teeth <i>z</i>	Ref. Dia. <i>d</i>	Tip Dia. <i>d_a</i>	Bore H7 <i>d_j</i>	Max. Bore H7 <i>d_j</i>	Hub Dia. <i>BD</i>	Backlash (mm)		I Inertia <i>kgm²</i>	Mass <i>kg</i>
							<i>j_{t,e}</i> (max)	<i>j_{t,i}</i> (min)		
PXHG3.0-15R	15	63.64	69.64	16	25	45	0.250 - 0.089	4.78 x 10 ⁻⁴	1.020	
PXHG3.0-16R	16	67.88	73.88	16	25	45	0.250 - 0.089	5.90 x 10 ⁻⁴	1.122	
PXHG3.0-17R	17	72.12	78.12	16	25	45	0.250 - 0.089	7.24 x 10 ⁻⁴	1.231	
PXHG3.0-18R	18	76.37	82.37	16	25	45	0.250 - 0.089	8.84 x 10 ⁻⁴	1.346	
PXHG3.0-19R	19	80.61	86.61	16	25	45	0.254 - 0.085	1.07 x 10 ⁻³	1.468	
PXHG3.0-20R	20	84.85	90.85	16	25	45	0.254 - 0.085	1.29 x 10 ⁻³	1.597	
PXHG3.0-21R	21	89.10	95.10	20	30	55	0.254 - 0.085	1.66 x 10 ⁻³	1.864	
PXHG3.0-22R	22	93.34	99.34	20	30	55	0.254 - 0.085	1.96 x 10 ⁻³	2.006	
PXHG3.0-23R	23	97.58	103.58	20	30	55	0.254 - 0.085	2.30 x 10 ⁻³	2.154	
PXHG3.0-24R	24	101.82	107.82	20	30	55	0.254 - 0.085	2.68 x 10 ⁻³	2.309	
PXHG3.0-25R	25	106.07	112.07	20	30	55	0.254 - 0.085	3.12 x 10 ⁻³	2.471	
PXHG3.0-26R	26	110.31	116.31	20	30	55	0.254 - 0.085	3.61 x 10 ⁻³	2.640	
PXHG3.0-27R	27	114.55	120.55	20	30	55	0.254 - 0.085	4.16 x 10 ⁻³	2.815	
PXHG3.0-28R	28	118.79	124.79	20	30	55	0.254 - 0.085	4.78 x 10 ⁻³	2.997	
PXHG3.0-29R	29	123.04	129.04	25	40	65	0.259 - 0.081	5.66 x 10 ⁻³	3.325	
PXHG3.0-30R	30	127.28	133.28	25	40	65	0.332 - 0.126	6.42 x 10 ⁻³	3.520	

PRECISION GEARS

3.0 Module 45° Crossed Helical Gear α 20° PA

Quality Grade 7e25 DIN 3961/3967 (AGMA Q10)

PXHG
3.0m_n

Standard Part **PXHG** **3.0** - **30** **R**

Modified Part **PXHG** **3.0** - **30** **L** **H** **30** **K** **T**

PXHG - Precision Crossed Helical Gear
Quality Grade 7e25 DIN 3961/3967
Other Quality Grades available.

m_n Module - Cut with DIN 867 1.25/0.20/1.0
Ref. Tooth Profile Topping WD = 2.25 x m_n

Number of Teeth z

Helix direction: Right (R) or Left (L)
Right Hand runs with Right Hand

Standard Material = 817M40T (28HRC)
H = 805M20 Case Hardened (58HRC)

T = 1 x Tapped hole 2T = 2 x Tapped holes.
P = 1 x Pin Hole PT = 1 x Pin Hole thru.
All threads metric as standard,
refer to page 308 for sizes and prices.

K- Keyway supplied to
DIN 6885 - Js9 tolerance.
For prices see page 308

To specify different bore enter size required
Example: 30 = 30mm H7 etc
For prices see page 308

Quality Grades and Tolerances stated prior to heat treatment processes.

η Efficiency approx. 98%

Discounts: 6+ -5% 19+ -10%

817M40T (28HRC)			Case Hardened 805M20 (58HRC)#		
Part Number	T ₂ Nm n ₂ 100min ⁻¹	Price Each 1 - 5	Part Number	T ₂ Nm n ₂ 100min ⁻¹	Price Each 1 - 5
PXHG3.0-15R	2.31	£42.90	PXHG3.0-15RH	8.46	£70.79
PXHG3.0-16R	2.46	£44.25	PXHG3.0-16RH	9.03	£73.03
PXHG3.0-17R	2.46	£48.27	PXHG3.0-17RH	9.03	£79.66
PXHG3.0-18R	2.61	£51.00	PXHG3.0-18RH	9.56	£84.16
PXHG3.0-19R	2.75	£52.29	PXHG3.0-19RH	10.09	£86.27
PXHG3.0-20R	2.90	£55.92	PXHG3.0-20RH	10.62	£92.25
PXHG3.0-21R	3.04	£57.93	PXHG3.0-21RH	11.15	£95.58
PXHG3.0-22R	3.19	£62.14	PXHG3.0-22RH	11.68	£102.54
PXHG3.0-23R	3.33	£65.48	PXHG3.0-23RH	12.21	£108.04
PXHG3.0-24R	3.48	£66.80	PXHG3.0-24RH	12.74	£110.21
PXHG3.0-25R	3.51	£74.78	PXHG3.0-25RH	12.86	£123.38
PXHG3.0-26R	3.65	£76.18	PXHG3.0-26RH	13.37	£125.71
PXHG3.0-27R	3.79	£78.28	PXHG3.0-27RH	13.89	£129.17
PXHG3.0-28R	3.93	£79.44	PXHG3.0-28RH	14.40	£131.08
PXHG3.0-29R	4.07	£81.80	PXHG3.0-29RH	14.92	£134.96
PXHG3.0-30R	4.21	£88.35	PXHG3.0-30RH	15.43	£145.78