

**PGRR**  
**PGRS**  
**0.5m<sub>n</sub>**

# PRECISION GEARS

## 0.5 Module Spur Gear Rack α 20° PA

Quality Grade 8 ISO 1328



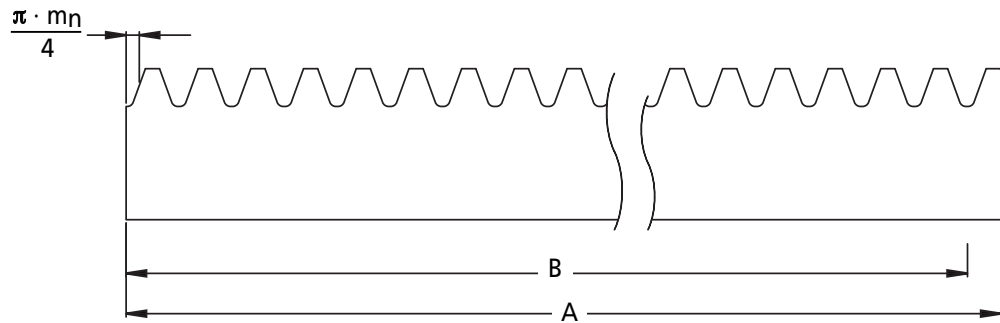
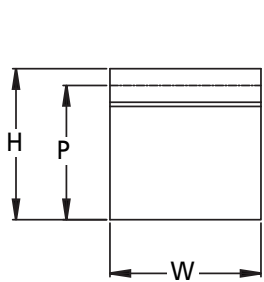
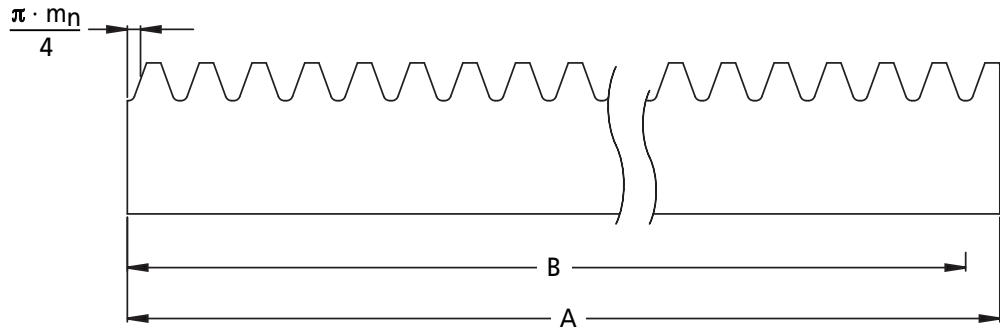
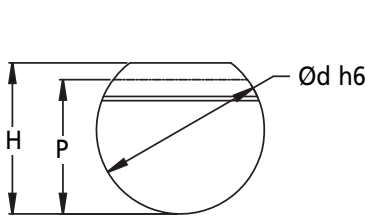
Standard Part **PGRR** **0.5** - **400** **A**

PGRR - Precision Round Gear Rack  
PGRS - Precision Square Gear Rack

m<sub>n</sub> Module - Cut with DIN 867 1.25/0.20/1.0

Length Type: A = Full Length  
B = Cut for Butt Joining

Length



**Discounts: 10+ -5% 25+ -10%**

Part Number	Module m <sub>n</sub>	Height H <sub>±0.05</sub>	Pitch Height P	Width W <sub>±0.05</sub>	Diameter Ød h6	Length A <sub>±0.25</sub>	Length A Price Each 1-9	Length B <sub>±0.1</sub>	Length B Price Each 1-9
PGRR0.5-400	0.5	7.5	7.0	-	8	400	£72.61	398	£82.07
PGRS0.5-600	0.5	10.0	9.5	10	-	600	£56.73	598	£66.19

### PGRR

Round: 303 stainless steel (83 HRB)

Straightness: 0.5mm/400mm  
Total Pitch Deviation: 0.10mm  
Surface finish on diameter: 0.4 Ra

### PGRS

Square: En8 Steel

Straightness: 1.0mm/1000mm  
Total Pitch Deviation: 0.10mm

All racks are cut starting at half tooth spacing.  
Racks cut for butt joining finish at half tooth spacing.  
Joining gauges available.  
Other lengths available POA

+44 (0)1246 455500  
+44 (0)1246 455522

**ondrives**

sales@ondrives.com  
www.ondrives.com

Product information updated 1st April 2011 and subject to change. Please contact Sales for the latest prices and availability.

# PRECISION GEARS

**PGRR**  
**PGRS**  
**1.0m<sub>n</sub>**

## 1.0 Module Spur Gear Rack α 20° PA

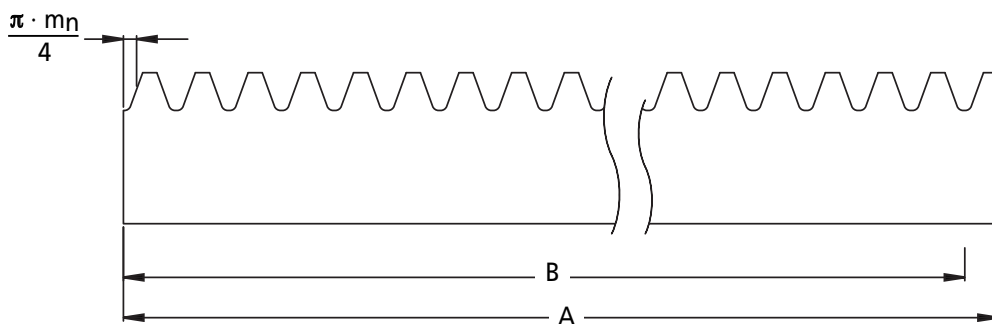
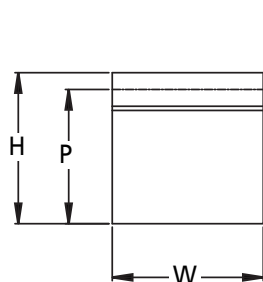
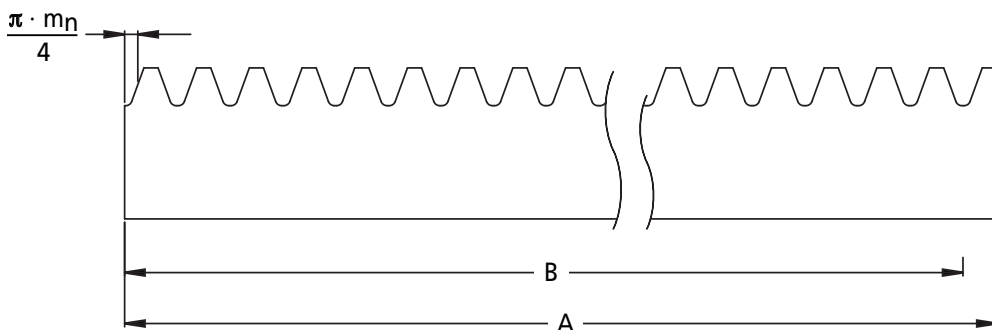
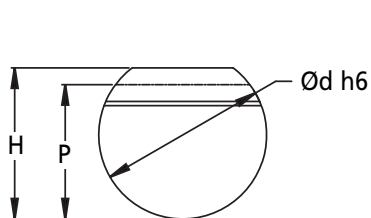
Quality Grade 8 ISO 1328



Standard Part **PGRR** **1.0** - **400** **A**

PGRR - Precision Round Gear Rack  
PGRS - Precision Square Gear Rack  
m<sub>n</sub> Module - Cut with DIN 867 1.25/0.20/1.0

Length Type: A = Full Length  
B = Cut for Butt Joining  
Length



**Discounts: 10+ -5% 25+ -10%**

Part Number	Module m <sub>n</sub>	Height H <sup>±0.05</sup>	Pitch Height P	Width W <sup>±0.05</sup>	Diameter Ød h6	Length A <sup>±0.25</sup>	Length A Price Each 1 - 9	Length B <sup>±0.1</sup>	Length B Price Each 1 - 9
PGRR1.0-400	1	9	8	-	10	400	£78.56	398	£88.02
PGRS1.0-600	1	10	9	10	-	600	£56.51	596	£65.97

### PGRR

Round: 303 stainless steel (83 HRB)

Straightness: 0.5mm/400mm

Total Pitch Deviation: 0.10mm

Surface finish on diameter: 0.4 Ra

All racks are cut starting at half tooth spacing.

Racks cut for butt joining finish at half tooth spacing.

Joining gauges available.

Other lengths available POA

### PGRS

Square: 080A47 Steel

Straightness: 1.0mm/1000mm

Total Pitch Deviation: 0.10mm

+44 (0)1246 455500  
+44 (0)1246 455522

**ondrives**

sales@ondrives.com  
www.ondrives.com

Product information updated 1st April 2011 and subject to change. Please contact Sales for the latest prices and availability.

**PGRR  
PGRS  
1.5m<sub>n</sub>**

# PRECISION GEARS

## 1.5 Module Spur Gear Rack α 20° PA

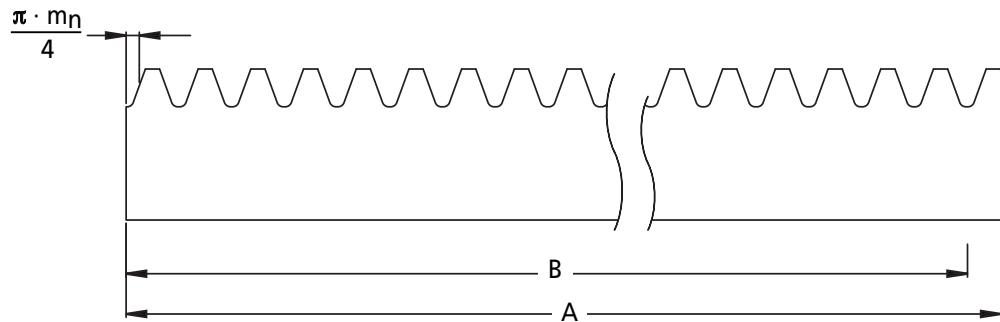
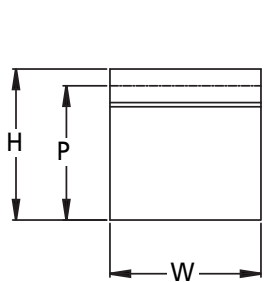
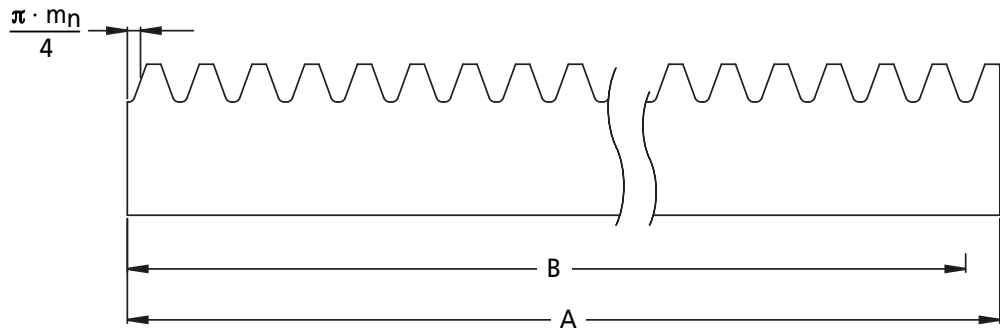
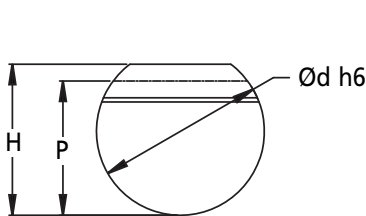
Quality Grade 8 ISO 1328



Standard Part **PGRR** **1.5** - **400** **A**

PGRR - Precision Round Gear Rack  
PGRS - Precision Square Gear Rack  
m<sub>n</sub> Module - Cut with DIN 867 1.25/0.20/1.0

Length Type: A = Full Length  
B = Cut for Butt Joining  
Length



**Discounts: 10+ -5% 25+ -10%**

Part Number	Module m <sub>n</sub>	Height H <sub>±0.05</sub>	Pitch Height P	Width W <sub>±0.05</sub>	Diameter Ød h6	Length A <sub>±0.25</sub>	Length A Price Each 1-9	Length B <sub>±0.1</sub>	Length B Price Each 1-9
PGRR1.5-400	1.5	13.5	12.0	-	15	400	£112.71	395	£123.62
PGRS1.5-600	1.5	15.0	13.5	15	-	600	£56.51	598	£67.66
PGRS1.5-1200	1.5	15.0	13.5	15	-	1200	£85.11	1196	£96.02

### PGRR

Round: 303 stainless steel (83 HRB)

Straightness: 0.5mm/400mm  
Total Pitch Deviation: 0.10mm  
Surface finish on diameter: 0.4 Ra

### PGRS

Square: 080A47 Steel

Straightness: 1.0mm/1000mm  
Total Pitch Deviation: 0.10mm

All racks are cut starting at half tooth spacing.  
Racks cut for butt joining finish at half tooth spacing.  
Joining gauges available.  
Other lengths available POA

+44 (0)1246 455500  
+44 (0)1246 455522

**ondrives**

sales@ondrives.com  
www.ondrives.com

Product information updated 1st April 2011 and subject to change. Please contact Sales for the latest prices and availability.

# PRECISION GEARS

**PGRR**  
**PGRS**  
**2.0m<sub>n</sub>**

## 2.0 Module Spur Gear Rack α 20° PA

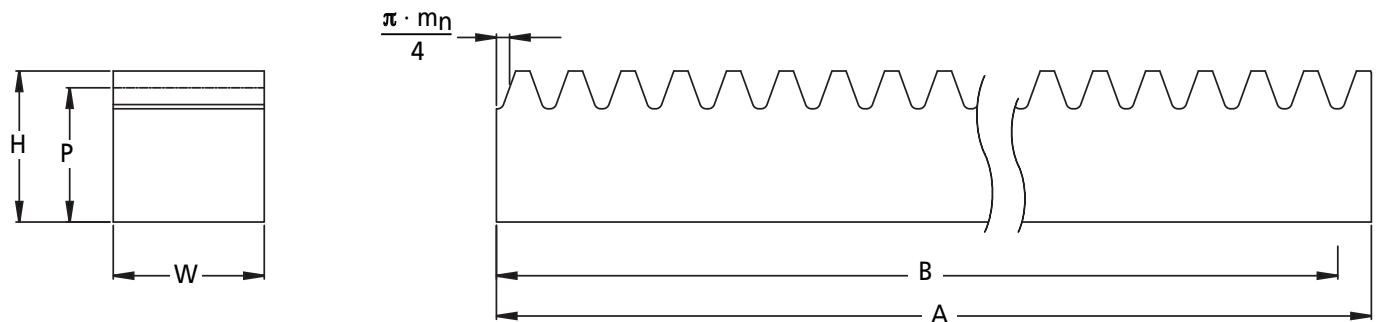
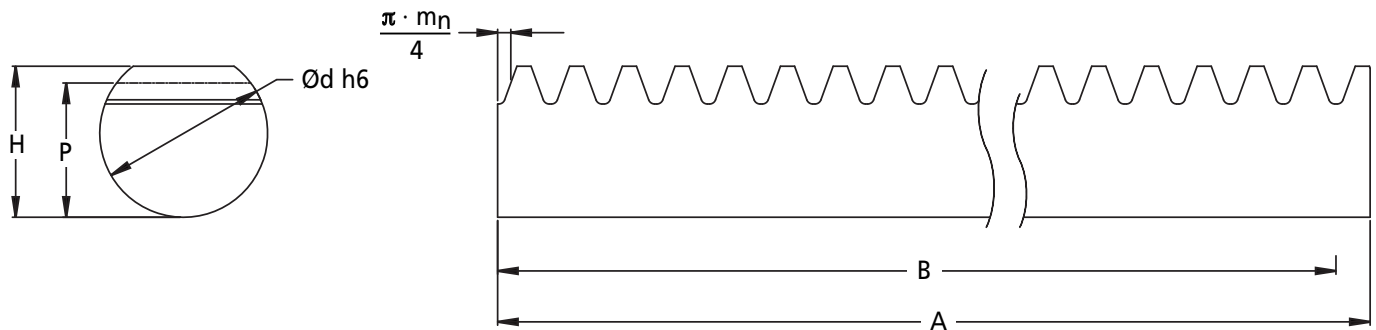
Quality Grade 8 ISO 1328



Standard Part **PGRR** **2.0** - **400** **A**

PGRR - Precision Round Gear Rack  
PGRS - Precision Square Gear Rack  
m<sub>n</sub> Module - Cut with DIN 867 1.25/0.20/1.0

Length Type: A = Full Length  
B = Cut for Butt Joining  
Length



**Discounts: 10+ -5% 25+ -10%**

Part Number	Module m <sub>n</sub>	Height H <sup>±0.05</sup>	Pitch Height P	Width W <sup>±0.05</sup>	Diameter Ød h6	Length A <sup>±0.25</sup>	Length A Price Each 1 - 9	Length B <sup>±0.1</sup>	Length B Price Each 1 - 9
PGRR2.0-400	2	18	16	-	20	400	£138.75	395	£150.44
PGRS2.0-600	2	20	18	20	-	600	£64.63	596	£76.32
PGRS2.0-1200	2	20	18	20	-	1200	£101.47	1193	£113.15

### PGRR

Round: 303 stainless steel (83 HRB)

Straightness: 0.5mm/400mm

Total Pitch Deviation: 0.10mm

Surface finish on diameter: 0.4 Ra

### PGRS

Square: 080A47 Steel

Straightness: 1.0mm/1000mm

Total Pitch Deviation: 0.10mm

All racks are cut starting at half tooth spacing.  
Racks cut for butt joining finish at half tooth spacing.  
Joining gauges available.  
Other lengths available POA

+44 (0)1246 455500  
+44 (0)1246 455522

**ondrives**

sales@ondrives.com  
www.ondrives.com

Product information updated 1st April 2011 and subject to change. Please contact Sales for the latest prices and availability.

**PGRR  
PGRS  
2.5m<sub>n</sub>**

# PRECISION GEARS

## 2.5 Module Spur Gear Rack α 20° PA

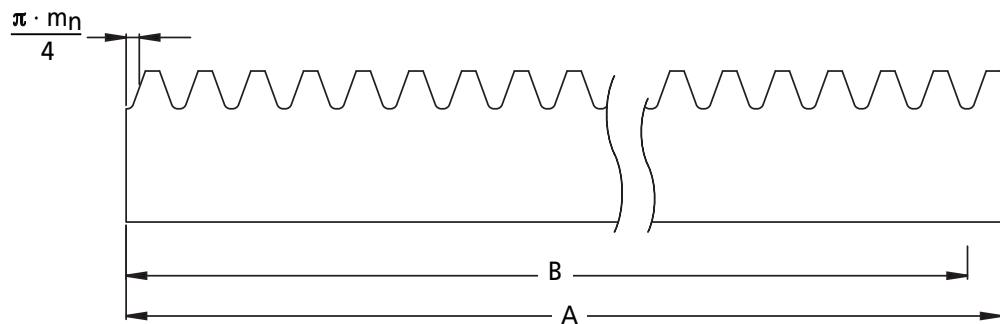
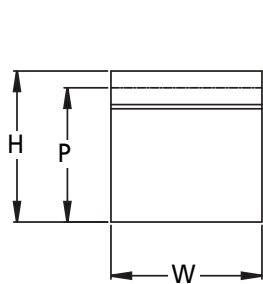
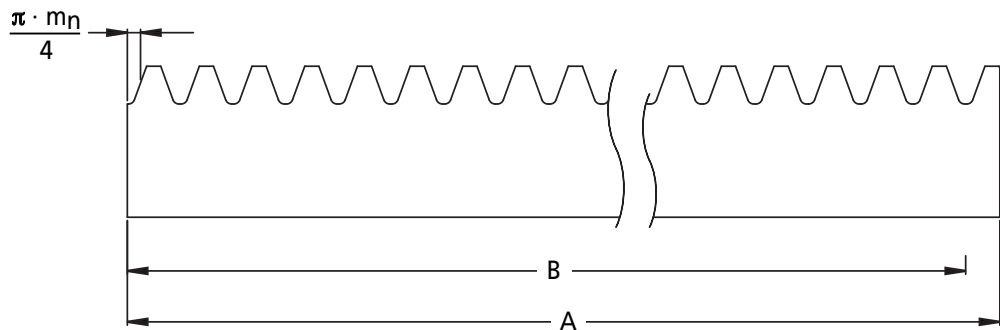
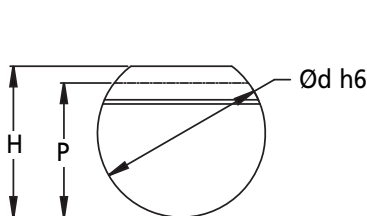
Quality Grade 8 ISO 1328



Standard Part **PGRR** **2.5** - **400** **A**

PGRR - Precision Round Gear Rack  
PGRS - Precision Square Gear Rack  
m<sub>n</sub> Module - Cut with DIN 867 1.25/0.20/1.0

Length Type: A = Full Length  
B = Cut for Butt Joining  
Length



**Discounts: 10+ -5% 25+ -10%**

Part Number	Module m <sub>n</sub>	Height H <sub>±0.05</sub>	Pitch Height P	Width W <sub>±0.05</sub>	Diameter Ød h6	Length A <sub>±0.25</sub>	Length A Price Each 1-9	Length B <sub>±0.1</sub>	Length B Price Each 1-9
PGRR2.5-400	2.5	22.5	20.0	-	25	400	£175.51	392	£189.31
PGRS2.5-600	2.5	25.0	22.5	25	-	600	£78.10	596	£91.90
PGRS2.5-1200	2.5	25.0	22.5	25	-	1200	£128.35	1193	£142.15

### PGRR

Round: 303 stainless steel (83 HRB)

Straightness: 0.5mm/400mm  
Total Pitch Deviation: 0.10mm  
Surface finish on diameter: 0.4 Ra

### PGRS

Square: 080A47 Steel

Straightness: 1.0mm/1000mm  
Total Pitch Deviation: 0.10mm

All racks are cut starting at half tooth spacing.  
Racks cut for butt joining finish at half tooth spacing.  
Joining gauges available.  
Other lengths available POA

+44 (0)1246 455500  
+44 (0)1246 455522

**ondrives**

sales@ondrives.com  
www.ondrives.com

Product information updated 1st April 2011 and subject to change. Please contact Sales for the latest prices and availability.

# PRECISION GEARS

**PGRR**  
**PGRS**  
**3.0m<sub>n</sub>**

## 3.0 Module Spur Gear Rack α 20° PA

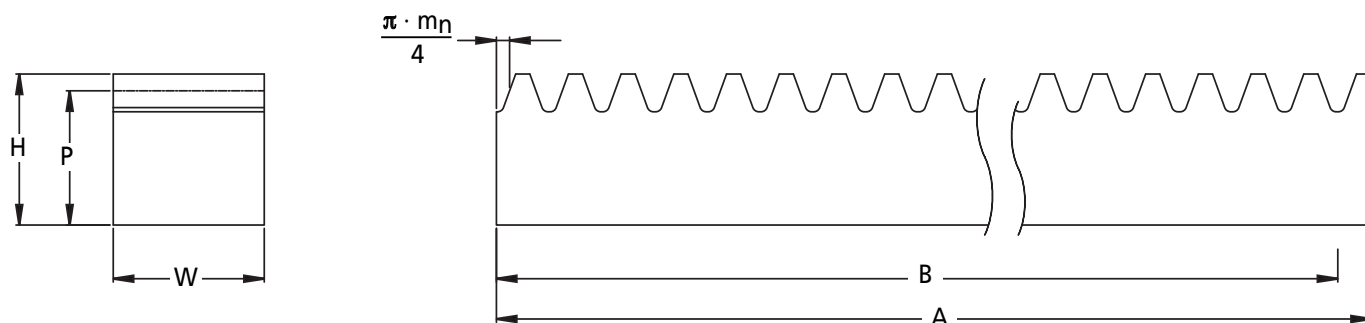
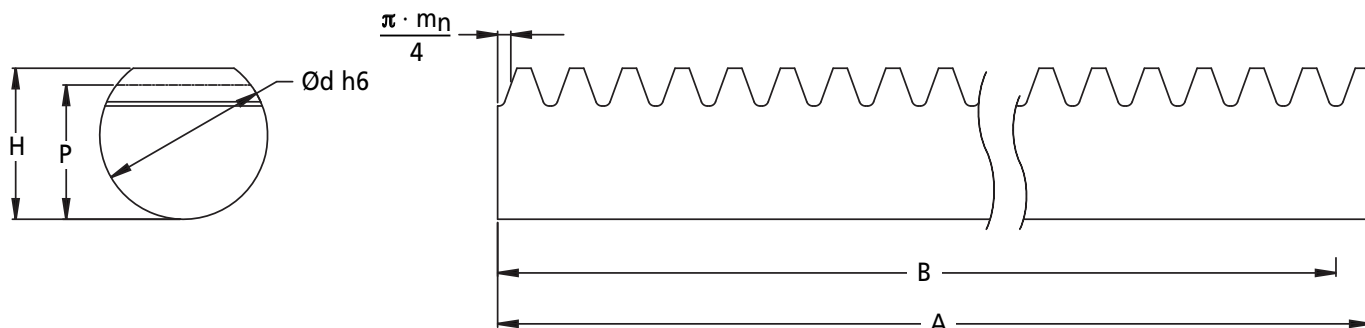
Quality Grade 8 ISO 1328



Standard Part **PGRR** **3.0** - **400** **A**

PGRR - Precision Round Gear Rack  
PGRS - Precision Square Gear Rack  
m<sub>n</sub> Module - Cut with DIN 867 1.25/0.20/1.0

Length Type: A = Full Length  
B = Cut for Butt Joining  
Length



**Discounts: 10+ -5% 25+ -10%**

Part Number	Module m <sub>n</sub>	Height H <sup>±0.05</sup>	Pitch Height P	Width W <sup>±0.05</sup>	Diameter Ød h6	Length A <sup>±0.25</sup>	Length A Price Each 1 - 9	Length B <sup>±0.1</sup>	Length B Price Each 1 - 9
PGRR3.0-400	3	27	24	-	30	400	£211.84	395	£228.09
PGRS3.0-600	3	30	27	30	-	600	£94.48	593	£110.74
PGRS3.0-1200	3	30	27	30	-	1200	£161.15	1196	£177.40

### PGRR

Round: 303 stainless steel (83 HRB)

Straightness: 0.5mm/400mm

Total Pitch Deviation: 0.10mm

Surface finish on diameter: 0.4 Ra

### PGRS

Square: 080A47 Steel

Straightness: 1.0mm/1000mm

Total Pitch Deviation: 0.10mm

All racks are cut starting at half tooth spacing.  
Racks cut for butt joining finish at half tooth spacing.  
Joining gauges available.  
Other lengths available POA

+44 (0)1246 455500  
+44 (0)1246 455522

**ondrives**

sales@ondrives.com  
www.ondrives.com

Product information updated 1st April 2011 and subject to change. Please contact Sales for the latest prices and availability.