

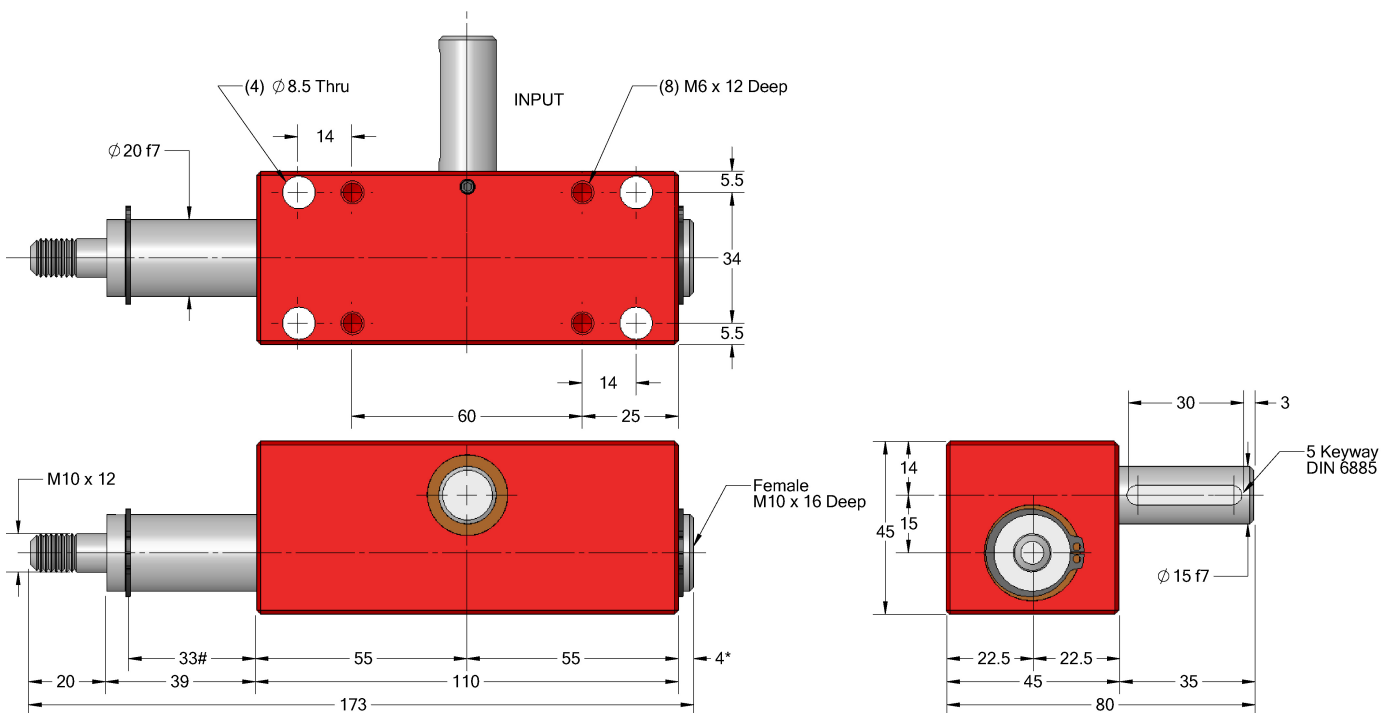
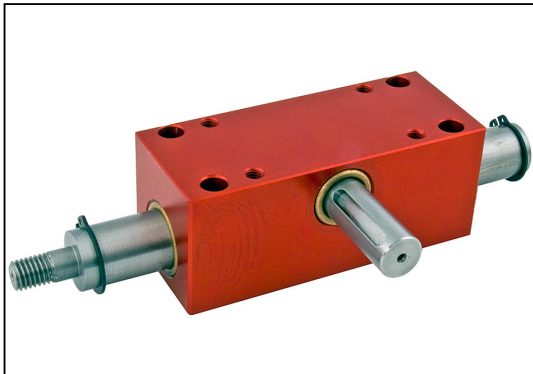
GEARBOXES

Rack & Pinion Actuator Box

30mm Stroke 60kg Load 5.2Nm

e-cad
Drawings
Available

RPA20



Maximum extension } These figures will increase/decrease during operation
* Minimum extension }

Discounts: 6+ -5% 20+ -10% 50+ -15% 100+ -20%

Part Number	Output Shaft Dia.	Input Shaft Dia.	Standard Travel	Max Torque Input at 100 rpm Nm	Max Load Output kg	Angular Movement For 1mm Travel	Angular Movement For Std Travel	Price Each 1 - 5
RPA20-30	Ø20	Ø15	30	5.2	60	6.55°	196.5°	£234.48

Case: Aluminium. Rack & Pinion: High Carbon Steel 817M40 (EN24).

Backlash: 2°.

Travel: 30mm travel = 196.5° pinion rotation on input. 1mm travel = 6.55° pinion rotation on input.

Greased for life: Shell Gadus S5 V42P 2.5.

Special lengths or travel can be supplied to suit customers' requirements.

For longer travel (up to 500mm rack), look at our Drylin linear rail **TS** & **TW** type in the Linear Section.

+44 (0)1246 455500

+44 (0)1246 455522

ondrives

sales@ondrives.com

www.ondrives.com

Product information updated 1st April 2011 and subject to change. Please contact Sales for the latest prices and availability.