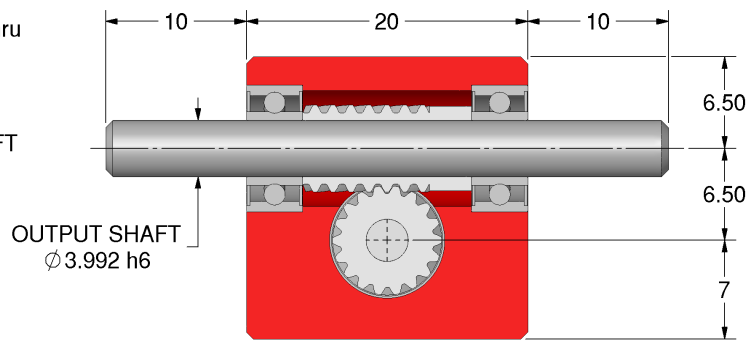
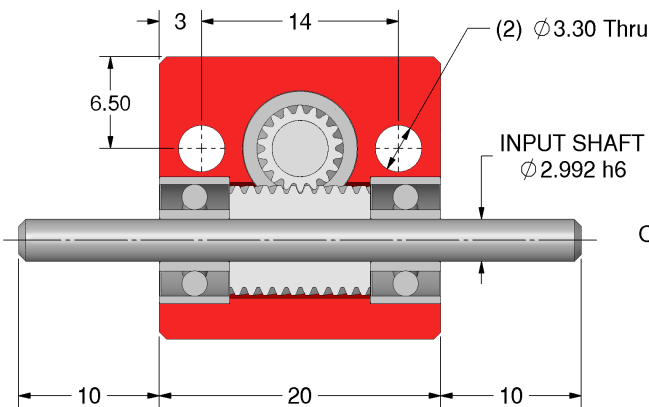
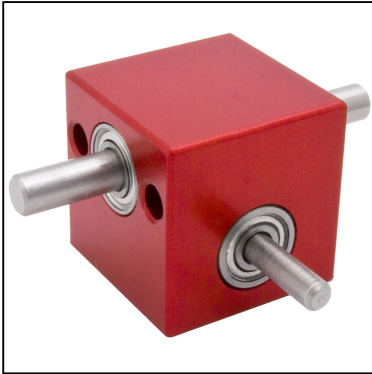


**PR6****e-cad**  
Drawings  
Available

# GEARBOXES

## Miniature Precision Worm Gear Reducers

Shaft Input & Output 0.015Nm – 0.046Nm **1:1 - 30:1****Discounts:** 6+ -5% 20+ -10% 50+ -15% 100+ -20%

Part Number	Ratio	Efficiency at 1000 Rpm	Reflected Inertia at Input (kg.m <sup>2</sup> )	Self 1) Locking Output	Price Each 1 - 5
PR6-1	1:1	82%	4.10 x 10 <sup>-8</sup>	✗	£109.26
PR6-5	5:1	80%	1.03 x 10 <sup>-8</sup>	✗	£109.26
PR6-10	10:1	78%	9.35 x 10 <sup>-9</sup>	✗	£109.26
PR6-15	15:1	71%	9.18 x 10 <sup>-9</sup>	✓	£109.26
PR6-30	30:1	60%	9.07 x 10 <sup>-9</sup>	✓	£109.26

**Housing:** AA15 Red Anodised Aluminium (6082-T6).**Shafts:** 303 Stainless Steel.**Worm:** 817M40(EN24) T Condition.**Wheel:** 817M40(EN24) T Condition.**Bearings:** Steel ZZ Shielded.**Weight:** 0.032kg.**Backlash:** ≈2°.**Max Input Speed:** 4000 Rpm (short term).**Greased for life:** Shell Gadus S5 V42P 2.5.1) Static only and may not be under vibration or other conditions of use.  
Amount of locking effect may vary due to manufacturing processes etc.**Input Shaft:** RH as standard.

Testing in your application is necessary.

You will need to assess duty cycles and confirm gearbox suitability with your own calculations.

Torque figures are to be used for guidance only.

### Output Torque Nm

Rpm Input	Reduction Ratio				
	1:1	5:1	10:1	15:1	30:1
2000	0.015	0.015	0.015	0.015	0.015
1000	0.020	0.020	0.020	0.020	0.020
500	0.028	0.028	0.028	0.028	0.028
200	0.036	0.036	0.036	0.036	0.036
100	0.046	0.046	0.046	0.046	0.046

+44 (0)1246 455500

+44 (0)1246 455522

**ondrives**

sales@ondrives.com

www.ondrives.com

Product information updated 1st June 2010 and subject to change. Please contact Sales for the latest prices and availability.