

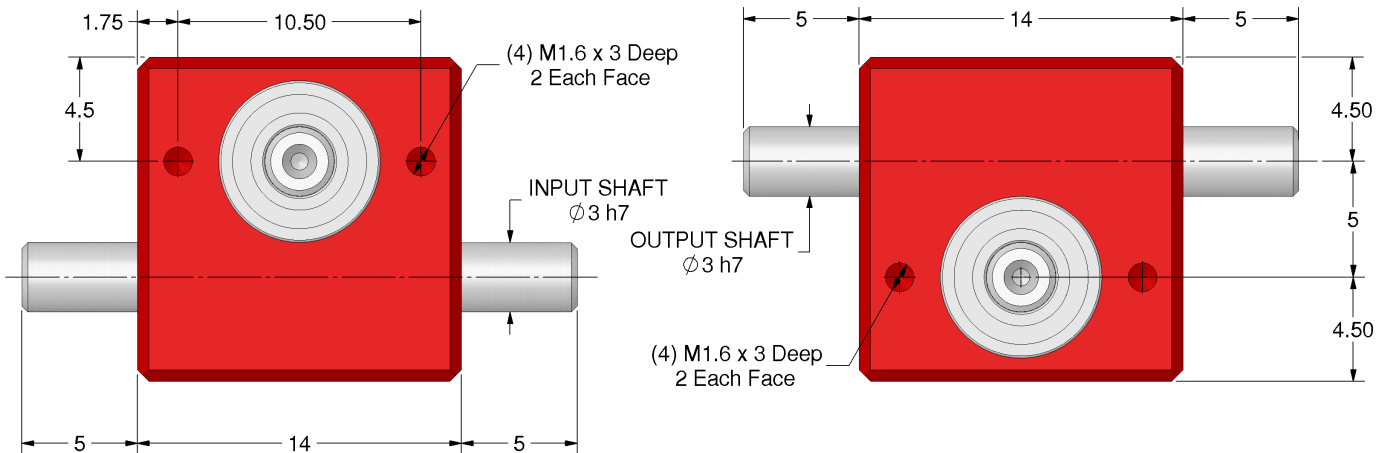
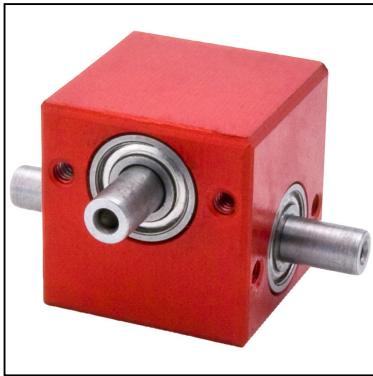
# GEARBOXES

e-cad  
Drawings  
Available

PR5

## Miniature Precision Worm Gear Reducers

Shaft Input & Output 0.009Nm – 0.028Nm **6:1 - 18:1**



**Discounts:** 6+ -5% 20+ -10% 50+ -15% 100+ -20%

Part Number	Ratio	Efficiency at 1000 Rpm	Reflected Inertia at Input (kg.m <sup>2</sup> )	Self 1) Locking Output	Price Each 1 - 5
PR5-6	6:1	78%	$6.04 \times 10^{-9}$	✘	£114.72
PR5-9	9:1	71%	$5.99 \times 10^{-9}$	✘	£114.72
PR5-18	18:1	60%	$5.96 \times 10^{-9}$	✔	£114.72

**Housing:** AA15 Red Anodised Aluminium (6082-T6).

**Shafts:** 817M40(EN24) T Condition.

**Worm:** 817M40(EN24) T Condition.

**Wheel:** 817M40(EN24) T Condition.

**Bearings:** Steel ZZ Shielded.

**Weight:** 0.032kg.

**Backlash:**  $\approx 2^\circ$ .

**Max Input Speed:** 4000 Rpm (short term).

**Greased for life:** Shell Gadus S5 V42P 2.5.

1) Static only and may not be under vibration or other conditions of use.

Amount of locking effect may vary due to manufacturing processes etc.

### Output Torque Nm

Rpm Input	Reduction Ratio		
	6:1	9:1	18:1
2000	0.009	0.009	0.009
1000	0.012	0.012	0.012
500	0.017	0.017	0.017
200	0.022	0.022	0.022
100	0.028	0.028	0.028

**Input Shaft:** RH as standard.

Testing in your application is necessary.

You will need to assess duty cycles and confirm gearbox suitability with your own calculations.

All figures listed are to be used for guidance only.

+44 (0)1246 455500

+44 (0)1246 455522

**ondrives**

sales@ondrives.com

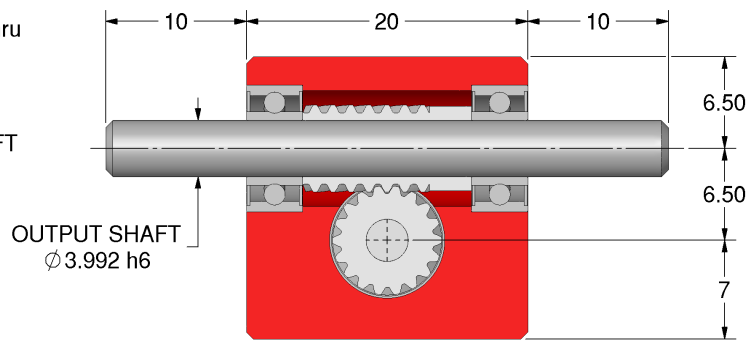
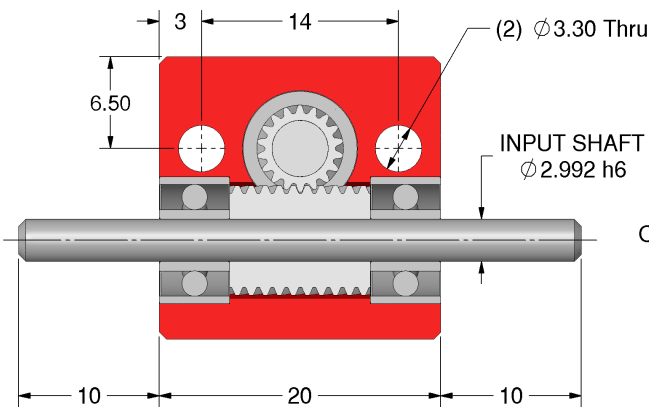
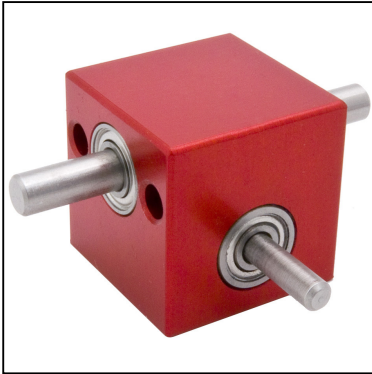
www.ondrives.com

Product information updated 1st April 2011 and subject to change. Please contact Sales for the latest prices and availability.

**PR6****e-cad  
Drawings  
Available**

# GEARBOXES

## Miniature Precision Worm Gear Reducers

Shaft Input & Output 0.015Nm – 0.046Nm **1:1 - 30:1****Discounts:** 6+ -5% 20+ -10% 50+ -15% 100+ -20%

Part Number	Ratio	Efficiency at 1000 Rpm	Reflected Inertia at Input (kg.m <sup>2</sup> )	Self 1) Locking Output	Price Each 1 - 5
PR6-1	1:1	82%	4.10 x 10 <sup>-8</sup>	✘	£114.72
PR6-5	5:1	80%	1.03 x 10 <sup>-8</sup>	✘	£114.72
PR6-10	10:1	78%	9.35 x 10 <sup>-9</sup>	✘	£114.72
PR6-15	15:1	71%	9.18 x 10 <sup>-9</sup>	✓	£114.72
PR6-30	30:1	60%	9.07 x 10 <sup>-9</sup>	✓	£114.72

**Housing:** AA15 Red Anodised Aluminium (6082-T6).**Shafts:** 303 Stainless Steel.**Worm:** 817M40(EN24) T Condition.**Wheel:** 817M40(EN24) T Condition.**Bearings:** Steel ZZ Shielded.**Weight:** 0.032kg.**Backlash:** ≈2°.**Max Input Speed:** 4000 Rpm (short term).**Greased for life:** Shell Gadus S5 V42P 2.5.1) Static only and may not be under vibration or other conditions of use.  
Amount of locking effect may vary due to manufacturing processes etc.**Input Shaft:** RH as standard.

Testing in your application is necessary.

You will need to assess duty cycles and confirm gearbox suitability with your own calculations.

All figures listed are to be used for guidance only.

### Output Torque Nm

Rpm Input	Reduction Ratio				
	1:1	5:1	10:1	15:1	30:1
2000	0.015	0.015	0.015	0.015	0.015
1000	0.020	0.020	0.020	0.020	0.020
500	0.028	0.028	0.028	0.028	0.028
200	0.036	0.036	0.036	0.036	0.036
100	0.046	0.046	0.046	0.046	0.046

+44 (0)1246 455500

+44 (0)1246 455522

**ondrives**

sales@ondrives.com

www.ondrives.com

Product information updated 1st April 2011 and subject to change. Please contact Sales for the latest prices and availability.

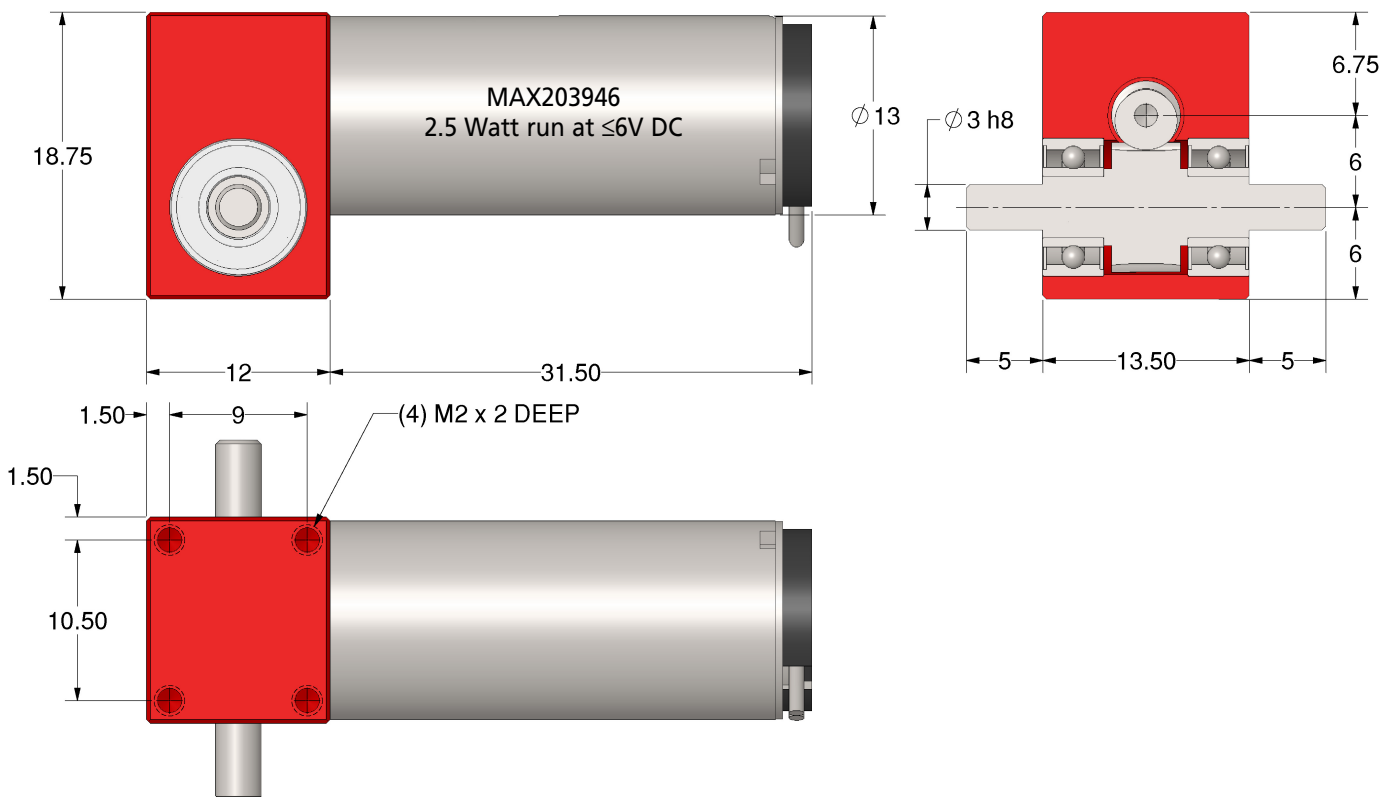
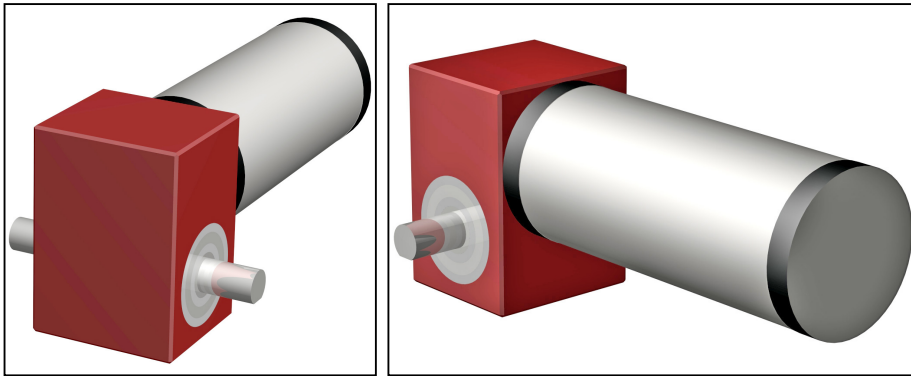
# GEARBOXES

## Miniature Precision Worm Gear Reducers

Fitted with Miniature DC Motor 0.036Nm

e-cad  
Drawings  
Available

PREM6



Discounts: 6+ -5% 20+ -10% 50+ -15% 100+ -20%

Part Number	Ratio	Rated Output Torque Nm	Fitted Motor	Price Each 1 - 5
PREM6-32	32:1	-	✘	£114.72
PREM6-32-13	32:1	0.036	MAX203946	£188.40

Part Number	Voltage (V)	No Load Speed (Rpm)	No Load Current (mA)	Nominal Current (mA)	Max Efficiency	Nominal Torque (mNm)	Moment of Inertia (gcm <sup>2</sup> )	Price Each 1 - 5
MAX203946	12	11,100	7	272	84%	2.6	0.507	£117.52

Gearbox Case: Aluminium 6082 T6  
Gears: Steel 817M40 T condition

### Motor

2 Pole Permanent Magnet Motor

Weight: 24g

Ambient Temperature Range: -20°C to +65°C (Max. Motor Temperature +85°C)

+44 (0)1246 455500  
+44 (0)1246 455522

**ondrives**

sales@ondrives.com  
www.ondrives.com

Product information updated 1st April 2011 and subject to change. Please contact Sales for the latest prices and availability.