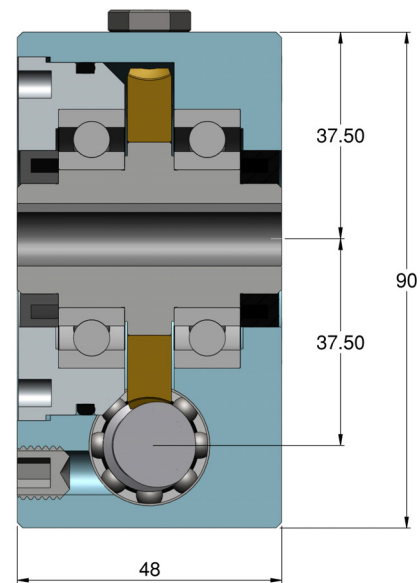
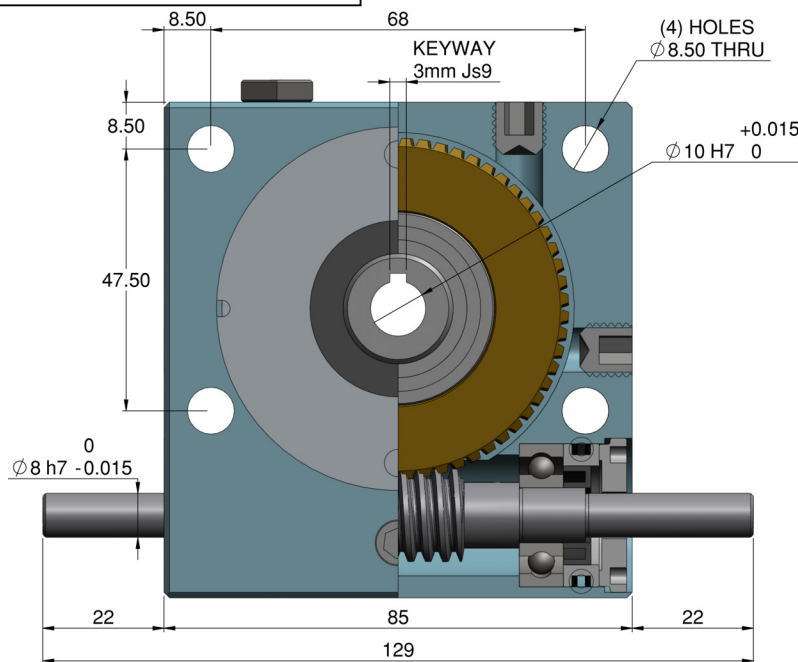
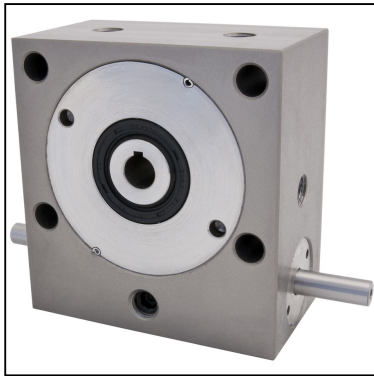


OFG40**e-cad**
Drawings
Available

GEARBOXES

Precision Oil Filled Worm Gear Reducers

Shaft Input 5Nm – 18Nm **5:1 - 120:1****Discounts:** 6+ -5% 20+ -10% 50+ -15% 100+ -20%

Part Number Standard ≤25'	Part Number Low Backlash ≤8'	Ratio	Efficiency at 1000 Rpm	Reflected Inertia at Input (kg.m ²)	Self Locking Output	Price Each 1 - 5	
						Standard	Low Backlash
OFG40-10	OFG40-10A	10:1	89%	2.94 x 10 ⁻⁶	✗	£265.45	£348.03
OFG40-12	OFG40-12A	12:1	87%	2.69 x 10 ⁻⁶	✗	£265.45	£348.03
OFG40-15	OFG40-15A	15:1	85%	2.49 x 10 ⁻⁶	✗	£265.45	£348.03
OFG40-20	OFG40-20A	20:1	83%	2.33 x 10 ⁻⁶	✗	£265.45	£348.03
OFG40-30	OFG40-30A	30:1	76%	2.22 x 10 ⁻⁶	✗	£265.45	£348.03
OFG40-60	OFG40-60A	60:1	65%	2.15 x 10 ⁻⁶	✓	£265.45	£348.03
OFG40-120	OFG40-120A	120:1	41%	2.10 x 10 ⁻⁶	✓	£265.45	£348.03
OFG40-SP	OFG40-SPA	5:1-120:1	Special Ratios: Replace SP with required ratio			£312.63	£348.03

Case (3): Aluminium 6082-T6 natural hard anodised.**Worm (4):** Alloy Case hard steel 805M20, DIN 21NiCrMo2 SAE 8620**Wheel Teeth (11):** Nickel Aluminium Bronze Ca104, ISO CuAl10Fe5Ni5, ASTM C63200.**Wheel Hub (11):** Stainless Steel 303, W.-Nr 1.4305, DIN X8CrNiS18-9**OFG40 Backlash:** ≤25 arc min. **OFG40-A Backlash:** ≤8 arc min. ultra precision wormwheel set.**Lubrication:** Klübersynth EG-4-150.**Self Locking Output:** Subject to ratio and only applies in static condition.

Amount of locking effect may vary due to manufacturing processes.

Maximum Overhung and Thrust Loads at 1000rpm: Input Overhung Load (F_{ib}) = 10kg.Output Overhung Load (F_{oa}) = 30kg. Output Thrust Load (F_a) = 20kg.**Output Shafts:** P40-X (single): £17.69 P40-DX (double): £21.94. **Output Key:** KK3-30 £0.94.**Input Shaft Modifications:** Smaller Dia.: £6.54/side. Mill Keyway/Flat: £6.54/side. Shorten Shaft: £3.91/side. Circlip Groove: £3.91 each. Pin Hole: £4.61 each.

Testing in your application is necessary. You will need to assess duty cycles and confirm suitability with your own calculations.

All figures listed are to be used for guidance only.

Output Torque Nm

Rpm Input	Reduction Ratio						
	10:1	12:1	15:1	20:1	30:1	60:1	120:1
3000	5.00	5.20	5.40	5.60	6.40	7.20	6.50
2000	5.50	5.80	6.20	6.60	7.30	8.00	7.20
1000	7.10	7.50	8.00	8.20	9.00	10.00	8.70
500	8.90	9.10	9.60	10.00	10.50	11.40	10.20
200	11.60	11.90	12.30	12.50	13.50	14.20	11.70
100	13.40	13.60	14.10	14.60	15.30	16.00	12.30
50	15.10	15.50	16.20	16.40	17.30	17.60	12.30
10	17.60	17.60	17.60	17.70	17.80	18.00	12.30

+44 (0)1246 455500

+44 (0)1246 455522

ondrives

sales@ondrives.com

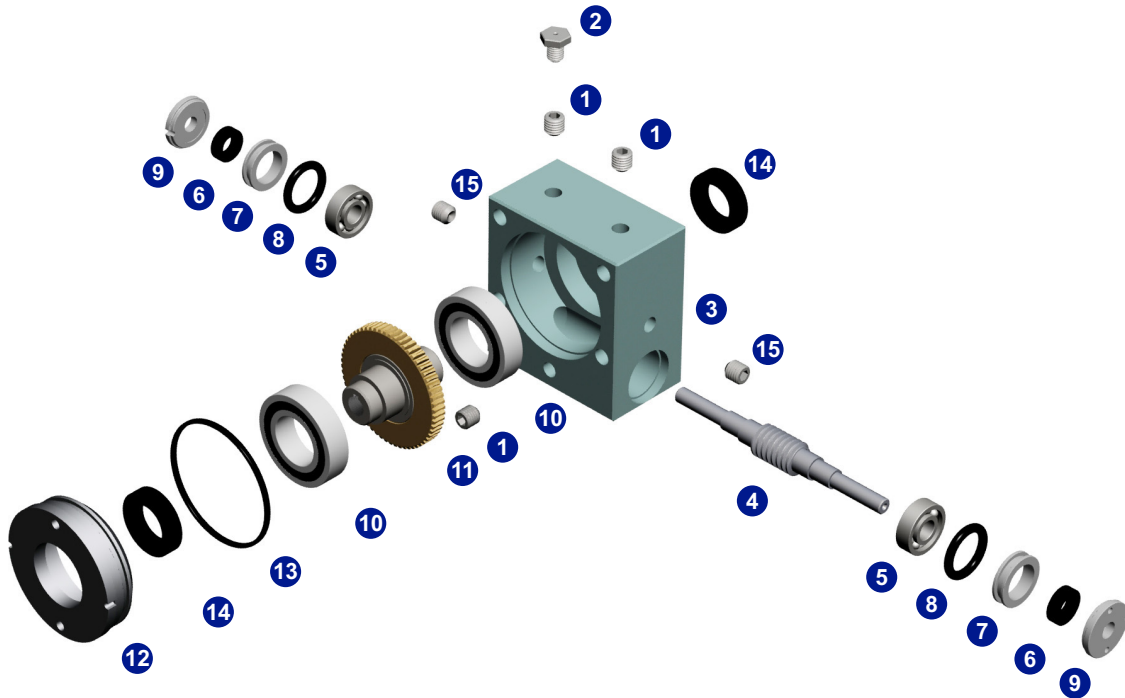
www.ondrives.com

Product information updated 1st April 2011 and subject to change. Please contact Sales for the latest prices and availability.

GEARBOXES

Precision Oil Filled Worm Gear Reducers

Shaft Input 5Nm – 18Nm **5:1 - 120:1**



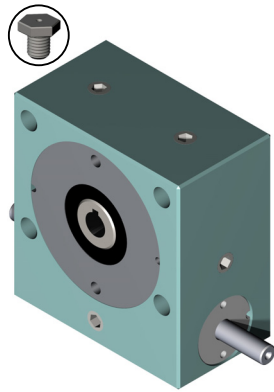
1: Blanking Plug
2: Breather
3: Case

4: Worm
5: Ball Bearing
6: Oil Seal

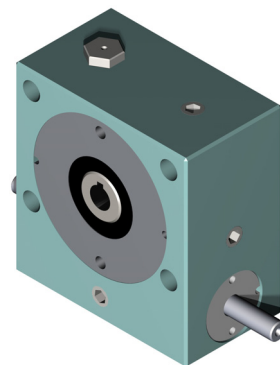
7: Sealing Unit
8: O-Ring
9: Screw Cap

10: Ball Bearing
11: Wheel
12: Screw Cap

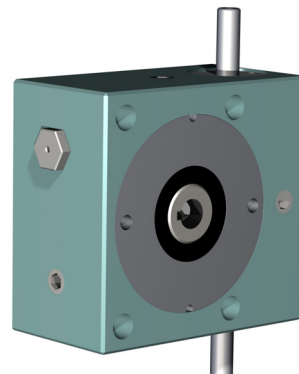
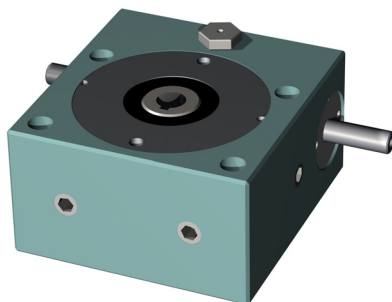
13: O-Ring
14: Oil Seal
15: Oil Level Plug



Supplied as standard. Separate breather (included) to be installed by the end user



Typical Breather Configuration



Optional Breather Configurations

1
A
C
I
N
H
C
E
T