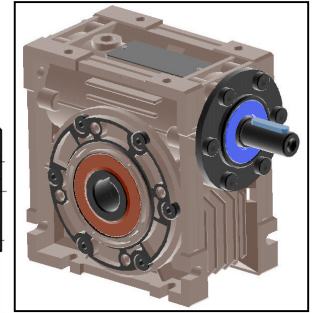
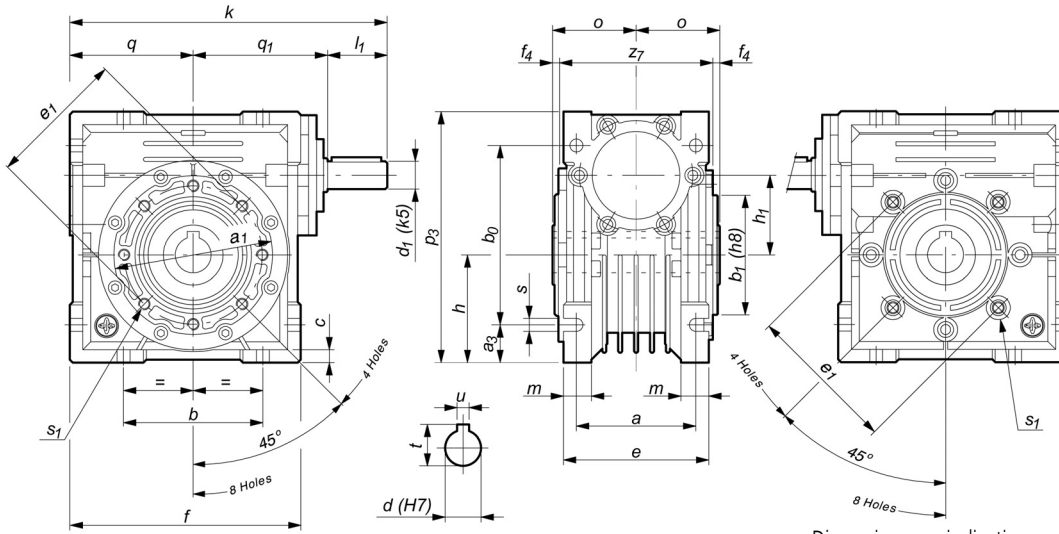


GEARBOXES

LZ

Heavy Duty Wormwheel Gearbox

5:1 – 100:1 • 21Nm – 48Nm • Bore Output



Dimensions are indicative and dependent on motor manufacturer

Part Number	k	a	a1	a3	b	b0	b1	c	e	e1	f	f4	h	h1	m	o	p3	q	q1	s	s1	Holes	z7	d	t	u	d1	l1
LZ40	159	60	85	19	70	90	60	6.5	73	75	116	3.5	54	40	14	42	126	62	67	6.5	M6x14	4	77	18	20.8	6	14	30

Part Number	P (Kw)	Ratio	Max. Torque (Nm)	Output Speed (Rpm)	Price Each
LZ40-5	0.98	5:1	28	288	£205.62
LZ40-10	0.71	10:1	38	144	£205.62
LZ40-15	0.57	15:1	43	96	£205.62
LZ40-19	0.46	19:1	40	76	£205.62
LZ40-29	0.39	29:1	48	50	£205.62
LZ40-40	0.27	40:1	43	36	£205.62
LZ40-50	0.20	50:1	38	29	£205.62
LZ40-65	0.16	65:1	37	22	£205.62
LZ40-80	0.10	80:1	27	18	£205.62
LZ40-100	0.07	100:1	21	14	£205.62

Ondrives Ltd. reserves the right to modify any dimensions, without changing the type number of reducers.

Material

Gearbox Casing: Aluminium. **Weight:** 2.2kg.

Wormwheel: Special Alloy Spun Bronze. **Worm:** Case hardened steel (58-61 Rockwell C).

Finish: Electrostatically painted with Epoxy Polyester powder at 205°C (minium thickness 0.060mm) Grey RAL 7031.

Lubrication: Synthetic Oil. **Ambient Temperature Range:** 0°C to + 40°C.

Extras

Supplied with Bore output as standard. Output shafts available.

Other info.

Values given for Input Speed of 1440 rpm. For Input Speeds n1 <500 rpm, please contact Ondrives.

+44 (0)1246 455500
+44 (0)1246 455522

ondrives

sales@ondrives.com
www.ondrives.com

Product information updated 1st April 2011 and subject to change. Please contact Sales for the latest prices and availability.