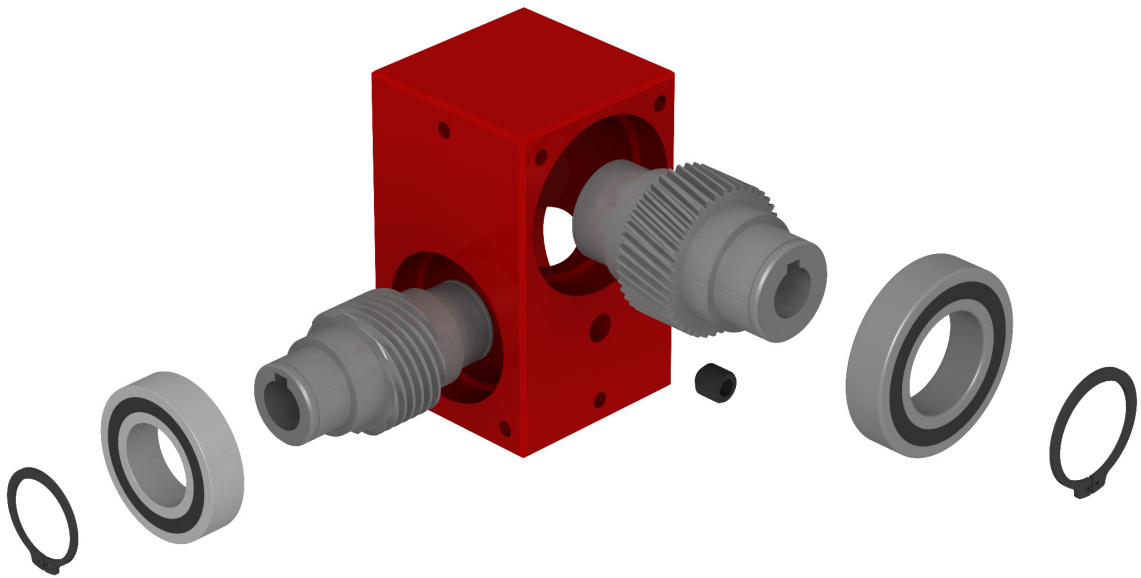


# GEARBOXES

## E Type Right Angle Helical Reducers

Heavy Duty 6mm – 30mm Bores **1:1 - 40:1**



**Case:** AA15 red anodised aluminium (6082-T6).

**Input Gear:** For 1:1 - 5:1 ratios hardened alloy steel 655M13 (14NiCr14) or 805M20 (21NiCrMo2) helical gear  
For 8:1 - 40:1 hardened alloy steel 655M13 (14NiCr14) or 805M20 (21NiCrMo2) worm gear.

**Output Gear:** For 1:1 - 5:1 ratios Hardened Alloy Steel 655M13 (14NiCr14) or 805M20 (21NiCrMo2) helical gear.

For 8:1 - 40:1 E15, E20 & E30 Aluminium Bronze (CA104 / AB2) wormwheel gear.  
For 8:1 - 40:1 E40, E50 & E60 Aluminium Bronze (CA104 / AB2) wormwheel with Alloy Steel 214M15 shaft.

**Bearings:** Steel single row radial ball bearing with 2RS rubber shields.

**Circlips:** DIN 471 C60 or C75 Steel

**Pressure Plug:** 1/8" BSP Plug. Gearboxes are greased for life. Refilling is only required when boxes are disassembled for refurbishment. Not fitted on E15, E20 and E30.

**Keyways and Bores:** All bores are toleranced to H7 ISO 286 as standard.

Keyways allow use of parallel DIN 6885 keys with sliding fit.

Tolerances may vary due to manufacturing processes.

**Motor Fitting Inputs:** Special flange and input required, add 35% to cost.

Contact the Ondrives Technical Department for details on motor frame sizes.

Certain restrictions may apply if the size of motor required is too large.

**Backlash:** Figures give are at output. Standard backlash 1°.

Low backlash A version ≤30 arc mins.

**Output Shafts:** Single & double output shafts are available in 303 stainless steel. See opposite for details.

**Thrust & Overhung Loads:** Based on an input speed of 1000rpm taking full torque load and combined thrust and overhung load.

**Specials:** Available from Ondrives are not only an extensive range of standard design reduction units but modifications to this range are also available. To find out more please contact the Ondrives Technical Department.

T  
E  
G  
H  
N  
I  
G  
A  
L