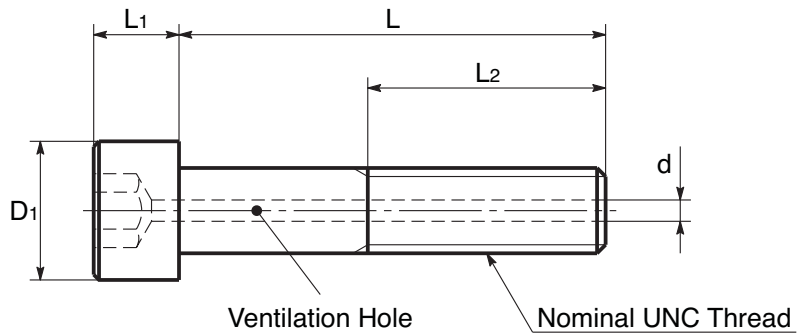
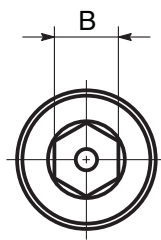


SVSS-PC

FASTENERS

Imperial Socket Head Cap Screw

with Ventilation Hole - Chemical Polish



Part Number	L	D1	L1	L2 min.	B	d Max.	Mass g	Qty. Per Pack	Price Per Pack 1 - 20
SVSS4-40X3/16-PC	3/16"	0.183"	0.112"	Complete	3/32"	1.0mm	0.5	10	£P.O.A
SVSS4-40X1/4-PC	1/4"	0.183"	0.112"	Complete	3/32"	1.0mm	0.6	10	£P.O.A
SVSS4-40X5/16-PC	5/16"	0.183"	0.112"	Complete	3/32"	1.0mm	0.6	10	£P.O.A
SVSS4-40X3/8-PC	3/8"	0.183"	0.112"	Complete	3/32"	1.0mm	0.7	10	£P.O.A
SVSS4-40X1/2-PC	1/2"	0.183"	0.112"	Complete	3/32"	1.0mm	0.8	10	£P.O.A
SVSS4-40X5/8-PC	5/8"	0.183"	0.112"	Complete	3/32"	1.0mm	0.9	10	£P.O.A
SVSS5-40X1/4-PC	1/4"	0.205"	0.125"	Complete	3/32"	1.2mm	0.8	10	£P.O.A
SVSS5-40X5/16-PC	5/16"	0.205"	0.125"	Complete	3/32"	1.2mm	0.9	10	£P.O.A
SVSS5-40X3/8-PC	3/8"	0.205"	0.125"	Complete	3/32"	1.2mm	0.9	10	£P.O.A
SVSS5-40X1/2-PC	1/2"	0.205"	0.125"	Complete	3/32"	1.2mm	1.1	10	£P.O.A
SVSS5-40X5/8-PC	5/8"	0.205"	0.125"	Complete	3/32"	1.2mm	1.2	10	£P.O.A
SVSS6-32X1/4-PC	1/4"	0.226"	0.138"	Complete	7/64"	1.2mm	1.0	10	£P.O.A
SVSS6-32X5/16-PC	5/16"	0.226"	0.138"	Complete	7/64"	1.2mm	1.1	10	£P.O.A
SVSS6-32X3/8-PC	3/8"	0.226"	0.138"	Complete	7/64"	1.2mm	1.2	10	£P.O.A
SVSS6-32X1/2-PC	1/2"	0.226"	0.138"	Complete	7/64"	1.2mm	1.3	10	£P.O.A
SVSS6-32X5/8-PC	5/8"	0.226"	0.138"	Complete	7/64"	1.2mm	1.5	10	£P.O.A
SVSS6-32X3/4-PC	3/4"	0.226"	0.138"	Complete	7/64"	1.2mm	1.7	10	£P.O.A
SVSS6-32X1-PC	1"	0.226"	0.138"	Complete	7/64"	1.2mm	2.0	10	£P.O.A
SVSS6-32X1-1/8-PC	1 1/8"	0.226"	0.138"	Complete	7/64"	1.2mm	2.2	10	£P.O.A
SVSS8-32X1/4-PC	1/4"	0.270"	0.164"	Complete	9/64"	1.5mm	1.5	10	£P.O.A
SVSS8-32X5/16-PC	5/16"	0.270"	0.164"	Complete	9/64"	1.5mm	1.7	10	£P.O.A
SVSS8-32X3/8-PC	3/8"	0.270"	0.164"	Complete	9/64"	1.5mm	1.8	10	£P.O.A
SVSS8-32X1/2-PC	1/2"	0.270"	0.164"	Complete	9/64"	1.5mm	2.1	10	£P.O.A
SVSS8-32X5/8-PC	5/8"	0.270"	0.164"	Complete	9/64"	1.5mm	2.3	10	£P.O.A

Material

SUSXM7 (SUS304 Equivalent), chemical polish.

Features

- May be used with vacuum chamber applications in clean rooms, FPD (Flat Panel Display) production equipment and semiconductor devices.
- Chemical polishing improves surface roughness and reduces diffusion to microscopic levels.

Options

Products without surface treatment are also available.

Applications

Remove trapped gases in the pilot bore through the ventilation hole (SVSS) and gases between the threads through the washer (SWAS-VF) with ventilation grooves.

+44 (0)1246 455500
+44 (0)1246 455522

ondrives

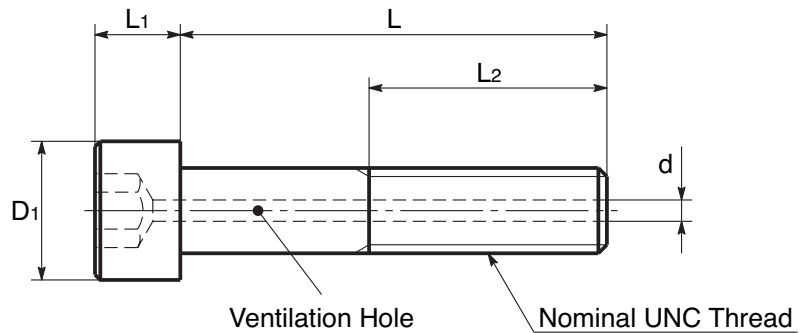
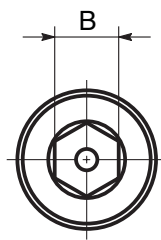
sales@ondrives.com
www.ondrives.com

Product information updated 1st April 2011 and subject to change. Please contact Sales for the latest prices and availability.

FASTENERS

SVSS-PC

Imperial Socket Head Cap Screw with Ventilation Hole - Chemical Polish



Part Number	L	D1	L1	L2 min.	B	d Max.	Mass g	Qty. Per Pack	Price Per Pack 1 - 20
SVSS8-32X3/4-PC	3/4"	0.270"	0.164"	Complete	3/4"	1.5mm	2.6	10	£P.O.A
SVSS8-32X1-PC	1"	0.270"	0.164"	Complete	3/4"	1.5mm	3.1	10	£P.O.A
SVSS8-32X1-1/8-PC	1 1/8"	0.270"	0.164"	Complete	3/4"	1.5mm	3.3	10	£P.O.A
SVSS10-24X1/4-PC	1/4"	0.312"	0.190"	Complete	5/2"	1.5mm	2.3	10	£P.O.A
SVSS10-24X5/16-PC	5/16"	0.312"	0.190"	Complete	5/2"	1.5mm	2.5	10	£P.O.A
SVSS10-24X3/8-PC	3/8"	0.312"	0.190"	Complete	5/2"	1.5mm	2.6	10	£P.O.A
SVSS10-24X1/2-PC	1/2"	0.312"	0.190"	Complete	5/2"	1.5mm	3.0	10	£P.O.A
SVSS10-24X5/8-PC	5/8"	0.312"	0.190"	Complete	5/2"	1.5mm	3.3	10	£P.O.A
SVSS10-24X3/4-PC	3/4"	0.312"	0.190"	Complete	5/2"	1.5mm	3.6	10	£P.O.A
SVSS10-24X1-PC	1"	0.312"	0.190"	Complete	5/2"	1.5mm	4.3	10	£P.O.A
SVSS10-24X1-1/8-PC	1 1/8"	0.312"	0.190"	Complete	5/2"	1.5mm	4.6	10	£P.O.A
SVSS10-24X1-1/4-PC	1 1/4"	0.312"	0.190"	0.880"	5/2"	1.5mm	5.0	10	£P.O.A
SVSS10-24X1-1/2-PC	1 1/2"	0.312"	0.190"	0.880"	5/2"	2.0mm	5.6	10	£P.O.A
SVSS1/4-20X5/16-PC	5/16"	0.375"	0.250"	Complete	3/16"	2.0mm	4.6	10	£P.O.A
SVSS1/4-20X3/8-PC	3/8"	0.375"	0.250"	Complete	3/16"	2.0mm	4.9	10	£P.O.A
SVSS1/4-20X1/2-PC	1/2"	0.375"	0.250"	Complete	3/16"	2.0mm	5.5	10	£P.O.A
SVSS1/4-20X5/8-PC	5/8"	0.375"	0.250"	Complete	3/16"	2.0mm	6.1	10	£P.O.A
SVSS1/4-20X3/4-PC	3/4"	0.375"	0.250"	Complete	3/16"	2.0mm	6.7	10	£P.O.A
SVSS1/4-20X1-PC	1"	0.375"	0.250"	Complete	3/16"	2.0mm	7.9	10	£P.O.A
SVSS1/4-20X1-1/8-PC	1 1/8"	0.375"	0.250"	Complete	3/16"	2.0mm	8.5	10	£P.O.A
SVSS1/4-20X1-1/4-PC	1 1/4"	0.375"	0.250"	Complete	3/16"	2.0mm	9.1	10	£P.O.A
SVSS1/4-20X1-1/2-PC	1 1/2"	0.375"	0.250"	1"	3/16"	2.0mm	10.2	10	£P.O.A
SVSS1/4-20X1-3/4-PC	1 3/4"	0.375"	0.250"	1"	3/16"	3.0mm	11.4	10	£P.O.A
SVSS1/4-20X2-PC	2"	0.375"	0.250"	1"	3/16"	3.0mm	12.6	10	£P.O.A

