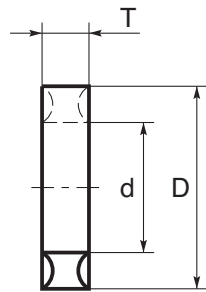
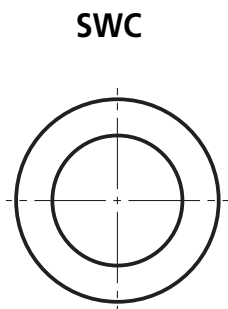
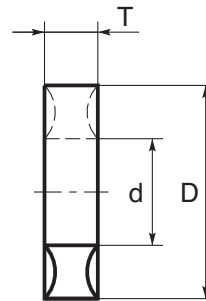
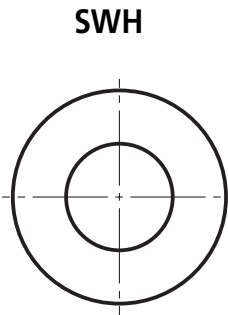


**SWH
SWC**

FASTENERS

Locking and Sealing Rings



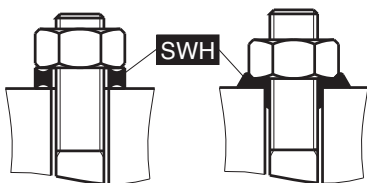
Discounts: 21+ -10% 51+ -20%

Part Number	Nominal	d	D	T	Mass g	Qty. Per Pack	Price Per Pack 1 - 20
SWH-3	3	3.20	8.0	2.2	0.1	10	£10.02
SWH-4	4	4.15	9.5	2.6	0.1	10	£12.00
SWH-5	5	5.15	10.6	3.0	0.2	10	£12.00
SWH-6	6	6.50	12.7	3.5	0.3	10	£14.03
SWH-8	8	8.10	16.2	4.0	0.6	5	£10.02
SWH-10	10	10.20	19.6	4.5	1.0	5	£15.03
SWH-12	12	12.20	23.6	5.0	1.5	5	£22.03
SWH-16	16	16.20	29.4	6.0	2.7	5	£35.10
SWC-4	4	4.10	7.7	2.0	0.1	10	£11.01
SWC-5	5	5.15	9.8	3.0	0.2	10	£12.00
SWC-6	6	6.50	10.5	2.5	0.2	10	£12.00
SWC-8	8	8.10	14.0	3.3	0.3	10	£18.07
SWC-10	10	10.20	17.0	3.8	0.5	10	£18.07
SWC-12	12	12.20	19.0	4.4	0.7	5	£13.05
SWC-16	16	16.20	25.0	5.6	1.6	5	£26.06

Before Tightening

After Tightening

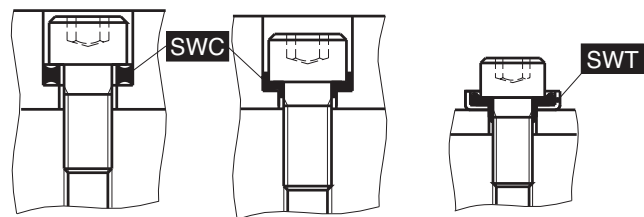
Use with the SWT*



Before Tightening

After Tightening

Use with the SWT*



Material

Polyamide, white.

*Note: For further information regarding SWT toothed washers, for use with sealing locking ring, please contact sales.

Features

- Useful for locking and sealing.
- Temperature capability: -60°C~80°C.
- **SWH**: for use with hexagon bolts and nuts.
- **SWC**: for use with hexagon socket head cap screws.

+44 (0)1246 455500
+44 (0)1246 455522

ondrives

sales@ondrives.com
www.ondrives.com

Product information updated 1st April 2011 and subject to change. Please contact Sales for the latest prices and availability.