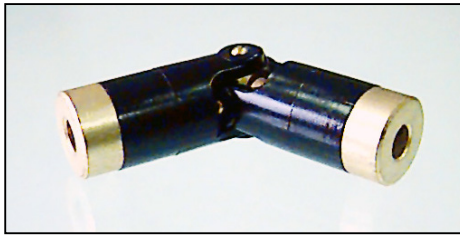


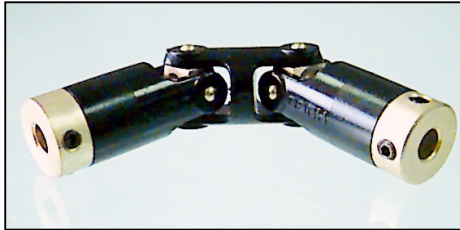
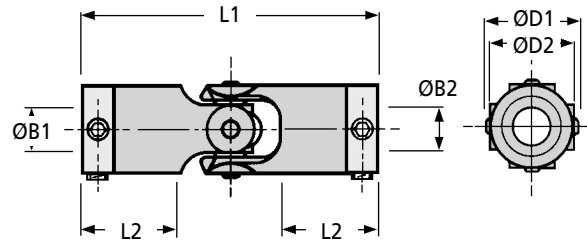
**PU-A
PU-C**

COUPLINGS

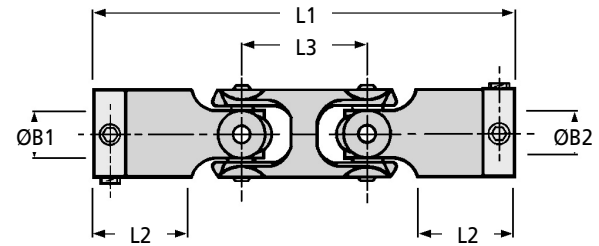
Acetal Universal Joints Backlash Free *Set Screw Fixing*



PU-A Type Single (45°)



PU-C Type Double (90°)



Discounts: 6+ -5% 16+ -10% 41+ -15% 100+ -20%

Part Number	Weight g	ØB1	ØB2	Max Bore	ØD1	ØD2	L1	L2	L3	Thread	Moment of Inertia kgm ² x 10 ⁸	Static Break Torque Nm	Peak Torque Nm	Max. End-loading N	Max. Radial Offset	Price Each 1 - 5
SINGLE																
PU6-3A	3.1	3.00	3.00	3.18	7.10	6.30	27.20	9.30	-	M3	1.1	0.45	0.11	18	-	£16.35
PU6-3.18A	3.1	3.18	3.18	3.18	7.10	6.30	27.20	9.30	-	M3	1.1	0.45	0.11	18	-	£16.35
PU9-3.18A	9.3	3.18	3.18	5.00	11.10	9.50	37.60	13.10	-	M3	13.5	1.90	0.36	38	-	£16.35
PU9-4A	9.3	4.00	4.00	5.00	11.10	9.50	37.60	13.10	-	M3	13.5	1.90	0.36	38	-	£16.35
PU9-4.76A	9.3	4.76	4.76	5.00	11.10	9.50	37.60	13.10	-	M3	13.5	1.90	0.36	38	-	£16.35
PU9-5A	9.3	5.00	5.00	5.00	11.10	9.50	37.60	13.10	-	M3	13.5	1.90	0.36	38	-	£16.35
PU13-4.76A	17.7	4.76	4.76	6.35	14.30	12.70	46.20	15.70	-	M3	44.6	4.50	0.85	67	-	£18.87
PU13-4A	17.7	4.00	4.00	6.35	14.30	12.70	46.20	15.70	-	M3	44.6	4.50	0.85	67	-	£18.87
PU13-6A	17.7	6.00	6.00	6.35	14.30	12.70	46.20	15.70	-	M3	44.6	4.50	0.85	67	-	£18.87
PU13-6.35A	17.7	6.35	6.35	6.35	14.30	12.70	46.20	15.70	-	M3	44.6	4.50	0.85	67	-	£18.87
PU16-6A	35.0	6.00	6.00	10.00	17.50	15.90	67.60	22.30	-	M4	136.0	6.80	1.60	98	-	£21.55
PU16-6.35A	35.0	6.35	6.35	10.00	17.50	15.90	67.60	22.30	-	M4	136.0	6.80	1.60	98	-	£21.55
PU16-8A	35.0	8.00	8.00	10.00	17.50	15.90	67.60	22.30	-	M4	136.0	6.80	1.60	98	-	£21.55
PU16-9.53A	35.0	9.53	9.53	10.00	17.50	15.90	67.60	22.30	-	M4	136.0	6.80	1.60	98	-	£21.55
PU16-10A	35.0	10.00	10.00	10.00	17.50	15.90	67.60	22.30	-	M4	136.0	6.80	1.60	98	-	£21.55
DOUBLE																
PU6-3C	3.5	3.00	3.00	3.18	7.10	6.30	35.30	9.30	8.10	M3	1.3	0.34	0.08	-	5.60	£18.77
PU6-3.18C	3.5	3.18	3.18	3.18	7.10	6.30	35.30	9.30	8.10	M3	1.3	0.34	0.08	-	5.60	£18.77
PU9-3.18C	3.5	3.18	3.18	5.00	11.10	9.50	50.80	13.10	13.20	M3	15.3	1.90	0.16	-	9.10	£18.77
PU9-4C	11.1	4.00	4.00	5.00	11.10	9.50	50.80	13.10	13.20	M3	15.3	1.90	0.16	-	9.10	£18.77
PU9-4.76C	11.1	4.76	4.76	5.00	11.10	9.50	50.80	13.10	13.20	M3	15.3	1.90	0.16	-	9.10	£18.77
PU9-5C	11.1	5.00	5.00	5.00	11.10	9.50	50.80	13.10	13.20	M3	15.3	1.90	0.16	-	9.10	£18.77
PU13-4.76C	21.6	4.76	4.76	6.35	14.30	12.70	62.10	15.70	15.90	M3	50.4	3.40	0.59	-	10.90	£23.05
PU13-4C	21.6	4.00	4.00	6.35	14.30	12.70	62.10	15.70	15.90	M3	50.4	3.40	0.59	-	10.90	£23.05
PU13-6C	21.6	6.00	6.00	6.35	14.30	12.70	62.10	15.70	15.90	M3	50.4	3.40	0.59	-	10.90	£23.05
PU13-6.35C	21.6	6.35	6.35	6.35	14.30	12.70	62.10	15.70	15.90	M3	50.4	3.40	0.59	-	10.90	£23.05
PU16-6C	42.4	6.00	6.00	10.00	17.50	15.90	89.80	22.30	22.20	M4	178.0	6.80	1.30	-	15.50	£26.11
PU16-6.35C	42.4	6.35	6.35	10.00	17.50	15.90	89.80	22.30	22.20	M4	178.0	6.80	1.30	-	15.50	£26.11
PU16-9.53C	42.4	9.53	9.53	10.00	17.50	15.90	89.80	22.30	22.20	M4	178.0	6.80	1.30	-	15.50	£26.11
PU16-10C	42.4	10.00	10.00	10.00	17.50	15.90	89.80	22.30	22.20	M4	178.0	6.80	1.30	-	15.50	£26.11

Material

Cross Piece & Inserts: Brass CZ121 Chromate & passivate finish. Forks Body: Black Acetal

Performance

Maximum Speed: 1000 Rpm. Temperature Range: -20°C to +60°C

Adjusted Torque: Peak torque values apply when the working angle is zero. Adjusted torque takes account of the dynamic loading at the bearings.

To find adjusted torque, determine application speed, torque and operating angle.

Then: **a)** multiply speed x working angle, **b)** subtract the result from 10000, **c)** divide the answer into 10,000, **d)** apply result to application torque.

eg. Speed = 400rpm, App. Torque = 0.1Nm, Working Angle = 20° **a)** 400rpm x 20° = 8000 **b)** 10000 - 8000 = 2000 **c)** 10000 / 2000 = 5 **d)** 5 x 0.1Nm = 0.5Nm

Select a joint where peak torque exceeds 0.5Nm ie. size 13 or larger **NB:** Speed x Working Angle must be less than 10000 to be within capacity.

Other Info.

Backlash Free. Up to 108 Turns

+44 (0)1246 455500
+44 (0)1246 455522

ondrives

sales@ondrives.com
www.ondrives.com

Product information updated 1st April 2011 and subject to change. Please contact Sales for the latest prices and availability.