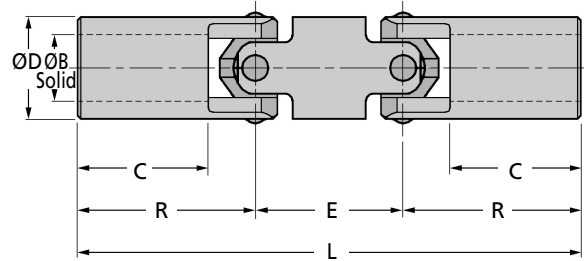
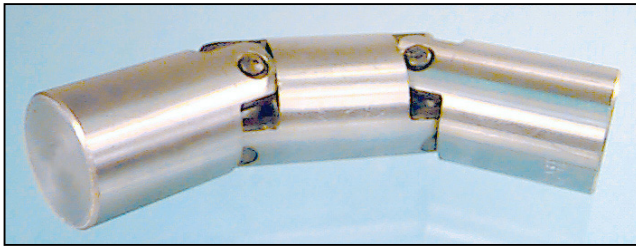


COUPLINGS

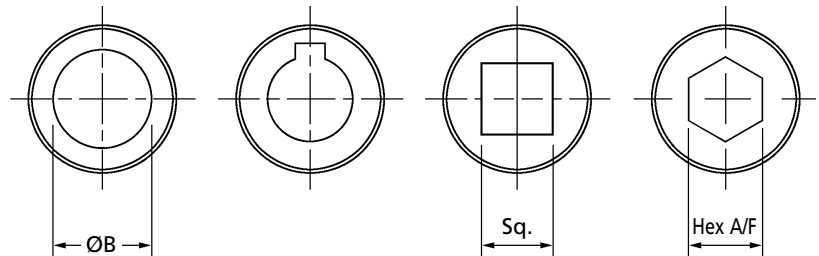
**B23
RMF**

Heavy Duty Universal Joints

Double Precision, Steel & Stainless : 0 - 55mm Bores



ØB All supplied solid - no bores
(bores and keyways are available to order as below)



Discounts: 10+ -2% 25+ -4% 50+ -6%

Part Number	Steel	Stainless	L	ØD	C	E	R	Max ØB	Max ØB & Key	Steel	Stainless	Price Each	
										Elastic Limit Nm	Elastic Limit Nm	1 - 9 Steel	1 - 9 Stainless
B2301	RMF-16		83	16	16.0	25	28.0	10	8	40	19	£119.35	£P.O.A
B2311	RMF-20		92	20	18.0	30	31.0	13	11	80	52	£122.73	£290.47
B2310	RMF-25		122	25	25.0	36	43.0	16	14	124	87	£139.70	£325.62
B2320	RMF-32		143	32	27.5	47	47.5	22	18	260	182	£188.68	£387.22
B2330	RMF-40		164	40	30.0	56	54.0	25	22	576	400	£210.32	£510.42
B2340	RMF-45		190	45	33.5	63	63.5	30	25	926	648	£255.15	£633.61
B2350	RMF-50		210	50	45.0	70	70.0	35	30	1186	830	£315.48	£836.09
B2360	RMF-63		262	63	52.0	84	89.0	45	35	1920	1344	£421.60	£1100.28
B2370	-		322	75	69.0	100	111.0	55	45	3840	-	£977.81	-

Minimum order quantities may apply to other sizes subject to manufacturing preferences and production.

Material

B23: Steel (EN16T) 605 M36

RMF: Stainless Steel 316

Performance

Maximum Speed: 700 Rpm

Backlash Guide at Pin: 0.08 to 0.13mm

Maximum Angular Offset: 50° (70° hand operation)

Torque Capacity - Always use Elastic Limit:

700 Rpm x 25° times elastic limit by 0.04

100 Rpm x 25° times by 0.26

700 Rpm x 10° times by 0.12

100 Rpm x 10° times by 0.68

Factors affecting performance

Temperature, Load, Speed, Angle of Transmission, Continuous or Intermittent Running, Lubrication, Other changes in working conditions.

Grease Retaining Covers should be fitted for maximum performance.

Extras

Bores, keyways, hexagons, squares available. Special materials also available; aluminium, aerospace grades, etc

+44 (0)1246 455500

+44 (0)1246 455522

ondrives

sales@ondrives.com

www.ondrives.com

Product information updated 1st April 2011 and subject to change. Please contact Sales for the latest prices and availability.