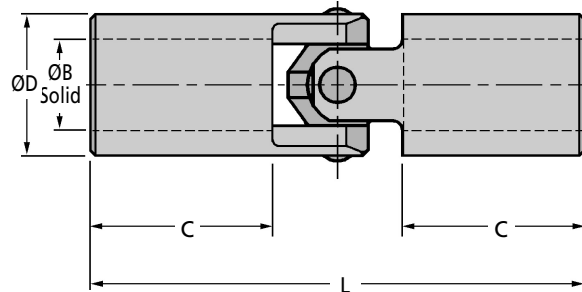
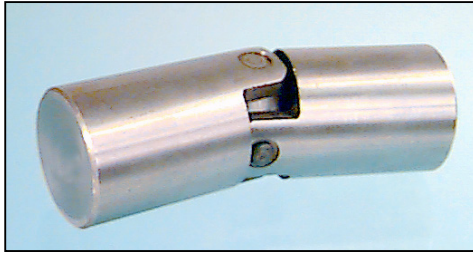


**B22
RME**

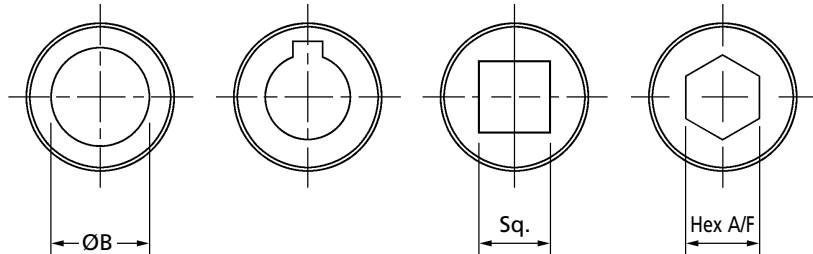
COUPLINGS

Heavy Duty Universal Joints

Single Precision, Steel & Stainless : 0 - 50mm Bores



**ØB All supplied solid - no bores
(bores and keyways are available to order as below)**



Discounts: 10+ -2% 25+ -4% 50+ -6%

Part Number	Steel	Stainless	L	ØD	C	Max ØB	Max ØB & Key	Steel Elastic Limit Nm	Stainless Elastic Limit Nm	Price Each	
										1 - 9	Steel
B2201	RME-16		58	16	19	10	8	40	19	£54.28	£123.22
B2211	RME-20		64	20	19	13	11	80	52	£55.07	£134.93
B2210	RME-25		86	25	26	16	14	124	87	£59.65	£143.74
B2220	RME-32		95	32	28	22	18	260	182	£73.38	£173.14
B2230	RME-40		108	40	30	25	22	576	400	£88.08	£225.96
B2240	RME-45		127	45	36	30	25	926	648	£112.25	£290.47
B2250	RME-50		140	50	41	35	30	1186	830	£186.27	£378.55
B2260	RME-63		178	63	52	45	35	1920	1344	£248.68	£533.94
B2280	-		190	80	55	50	45	3840	-	£448.73	-

Minimum order quantities may apply to other sizes subject to manufacturing preferences and production.

Material

B22: Steel (EN16T) 605 M36

RME: Stainless Steel 316

Performance

Maximum Speed: 700 Rpm

Backlash Guide at Pin: 0.08 to 0.13mm

Maximum Angular Offset: 25° (35° hand operation)

Torque Capacity - Always use Elastic Limit:

700 Rpm x 25° times elastic limit by 0.04

100 Rpm x 25° times by 0.26

700 Rpm x 10° times by 0.12

100 Rpm x 10° times by 0.68

Factors affecting performance

Temperature, Load, Speed, Angle of Transmission, Continuous or intermittent Running, Lubrication, Other changes in working conditions.

Grease Retaining Covers should be fitted for maximum performance.

Extras

Bores, keyways, hexagons, squares available. Special materials also available; aluminium, aerospace grades, etc

+44 (0)1246 455500

+44 (0)1246 455522

ondrives

sales@ondrives.com

www.ondrives.com

Product information updated 1st April 2011 and subject to change. Please contact Sales for the latest prices and availability.