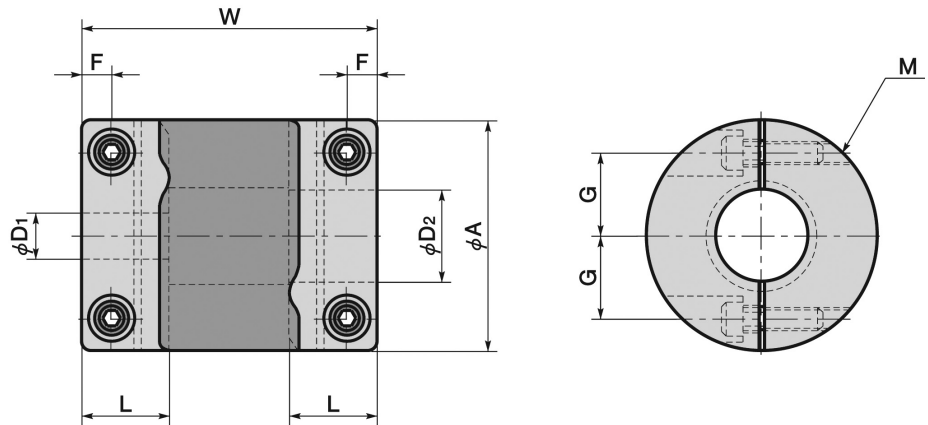


COUPLINGS

XGT

Vibration Absorption Flexible Coupling

Backlash Free, Cap Screw Fixing : 1.1 - 70Nm, 4 - 28mm Bores



Part Number	Max Rotational Frequency (min ⁻¹)	Moment of Inertia [†] (kg•m ²)	Static Torsional Stiffness (N•m/rad)	Max. Parallel Offset (mm)	Max. Working Angle	Max. Axial Play (mm)	Mass [†] (g)
XGT-15C	42000	2.7 x 10 ⁻⁷	43	0.15	1.5°	±0.2	8
XGT-19C	33000	8.4 x 10 ⁻⁷	88	0.15	1.5°	±0.2	14
XGT-25C	25000	3.0 x 10 ⁻⁶	170	0.15	1.5°	±0.3	28
XGT-30C	21000	6.9 x 10 ⁻⁶	220	0.20	1.5°	±0.3	45
XGT-34C	18000	1.3 x 10 ⁻⁵	390	0.20	1.5°	±0.3	65
XGT-39C	16000	2.7 x 10 ⁻⁵	520	0.20	1.5°	±0.3	98
XGT-44C	14000	4.2 x 10 ⁻⁵	640	0.20	1.5°	±0.3	136
XGT-56C	11000	1.4 x 10 ⁻⁴	1500	0.20	1.5°	±0.3	276

† Based on maximum bore dimensions.

Discounts: 6+ -10% | 16+ -15% | 41+ -20% | 100+ -25%

Part Number	Standard Bores ØD ₁ ØD ₂	Max. Bores ØD ₁ ØD ₂	A	L	W	F	G	M	Wrench Torque (N•m)	Rated [‡] Torque (N•m)	Max [‡] Torque (N•m)	Price Each 1 - 5
XGT-15C	4 x 4	6	15	6.5	23	2.15	5.00	M1.6	0.25	1.1	2.2	£59.86
XGT-19C	5 x 5	8	19	7.7	26	2.65	6.50	M2	0.50	2.1	4.2	£64.50
XGT-25C	6 x 6	12	25	9.5	32	3.25	9.00	M2.5	1.00	4.0	8.0	£71.14
XGT-30C	8 x 8	15	30	11.0	36	4.00	11.00	M3	1.50	6.3	12.6	£82.80
XGT-34C	10 x 10	16	34	12.0	38	4.00	12.25	M3	1.50	8.0	16.0	£88.21
XGT-39C	12 x 12	20	39	15.5	48	4.50	14.50	M4	2.50	13.5	27.0	£100.28
XGT-44C	14 x 14	22	44	15.0	48	4.75	16.00	M4	2.50	18.0	36.0	£117.25
XGT-56C	15 x 15	28	56	19.5	60	5.50	20.00	M5	7.00	35.0	70.0	£143.96

‡ Adjustment of rated and maximum torque specifications for load fluctuations is not required. However, if operating temperature exceeds 30°C, please adjust rated torque and maximum torque as follows:

Air Temperature:	-20°C to +30°C	+30°C to +40°C	+40°C to +60°C	+60°C to +80°C
Temperature Correction Factor:	1.00	0.80	0.70	0.55

Material

Hub: Aluminium A2017. **Anti-vibration Rubber:** HNBR. **Cap Screw:** Steel SCM435 Black Oxide Coating.

Performance

Operating Temperature Range: -20°C to +80°C Approx. **Volume Resistance:** 10¹²-10¹³ Ωm. Excellent resistance to ageing, weathering, ozone, light oil, alcohol, water, strong alkali and low concentration organic acid. Excellent vibration absorption and electrical insulation.

Extras

Stainless Steel Capscrews. Bore and keyway modifications available on request.

Other Info.

High torque single piece structure with anti-vibration rubber moulded between two hubs. For use with servo motors and stepper motors. Identical clockwise and counter-clockwise rotational characteristics. Recommended tolerance for shaft diameters is h6 and h7. Split coupling for easy attachment and removal.

+44 (0)1246 455500
+44 (0)1246 455522

ondrives

sales@ondrives.com
www.ondrives.com

Product information updated 1st April 2011 and subject to change. Please contact Sales for the latest prices and availability.