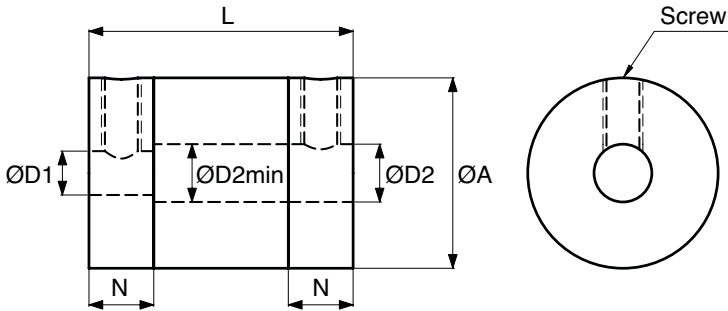
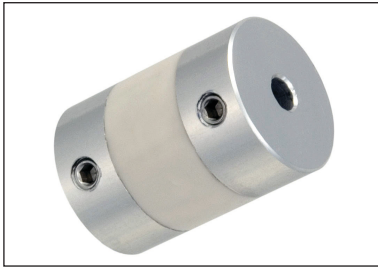


**NPS
NPC**

COUPLINGS

Backlash Free Silicone Insert Couplings with Set Screw & Clamp Fixing

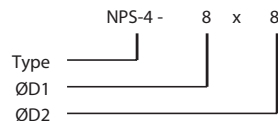


Part Number	Bore Range (mm) Min. - Max.		ØA	L	N	Screw	Angular Offset	Parallel Offset	Max. Torque Nm	Price Each
	ØD1	ØD2								
Set Screw										
NPS-4	4.4-10	5.8-10	19.1	26.5	6.5	M4	0.6°	0.12°	3.0	£38.04
NPS-5	5.8-12.7	7.5-12.7	25.4	38.1	11.0	M5	1.0°	0.15°	5.7	£41.89
NPS-6	5.8-19	9.8-19	31.8	57.2	16.0	M6	1.6°	0.30°	8.0	£60.66
Clamp										
NPC-4	4.4-10	5.8-10	19.1	26.5	6.5	M2.5	0.6°	0.12°	3.0	£45.81
NPC-5	5.8-12.7	7.5-12.7	25.4	38.1	11.0	M3	1.0°	0.15°	5.7	£50.38
NPC-6	5.8-16	9.8-16	31.8	57.2	16.0	M4	1.6°	0.30°	8.0	£74.79

Material

Hub: Aluminium (DIN1725)
Insert: 40 ShA Silicone

Ordering



Features

- Silicone component is bonded to the hubs.
- Electrically isolated shafts.
- Heat resistant -50°C to +150°C.
- Soft start/stop
- Maximum compensation values for misalignments are mutually exclusive.
- For the maximum torque, select the size where maximum torque exceeds Application Torque x Service Factor.
- Max. speed is 5000rpm.
- Service factor:
 - Shock & Reversing: 2.0
 - Non-reversing: 1.5
 - Steady load: 1.0
- Torsional stiffness (based on bore diameter of D2 min) at load = Torque

• Backlash free.

2



+44 (0)1246 455500



+44 (0)1246 455522

ondrives



sales@ondrives.com



www.ondrives.com

Product information updated 26th October 2011 and subject to change. Please contact Sales for the latest prices and availability.