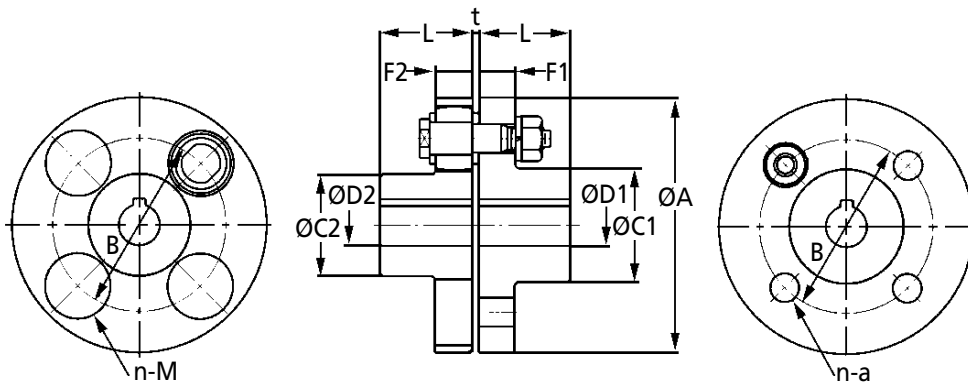
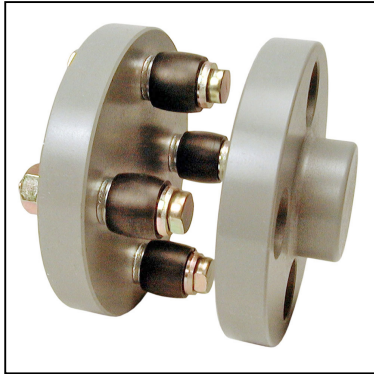


**FCL**

# COUPLINGS

## Flanged Flexible Shaft Couplings

Cast Iron



<b>Discounts:</b> 6+ -5%	20+ -10%	30+ -15%	50+ -20%	100+ -30%
--------------------------	----------	----------	----------	-----------

Part Number	A	Pilot Bore ØD1 ØD2	L	C1	C2	B	F1	F2	No. of Bolts n	a	M	t	Mass kg	Pilot Bore Price 1 - 5
FCL-90	90	-	28.0	35.5	35.5	60	14.0	14.0	4	8.0	19	3	1.54	£27.83
FCL-100	100	-	35.5	42.5	42.5	67	16.0	16.0	4	10.0	23	3	2.32	£33.41
FCL-112	112	-	40.0	50.0	50.0	75	16.0	16.0	4	10.0	23	3	3.09	£38.85
FCL-125	125	-	45.0	56.0	50.0	85	18.0	18.0	4	14.0	32	3	4.18	£49.39
FCL-140	140	-	50.0	71.0	63.0	100	18.0	18.0	6	14.0	32	3	5.81	£64.23
FCL-160	160	-	56.0	80.0	80.0	115	18.0	18.0	8	14.0	32	3	8.24	£90.10
FCL-180	180	-	63.0	90.0	90.0	132	18.0	18.0	8	14.0	32	3	11.10	£108.73
FCL-200	200	18	71.0	100.0	100.0	145	22.4	22.4	8	20.0	41	4	16.60	£186.16
FCL-224	224	18	80.0	112.0	112.0	170	22.4	22.4	8	20.0	41	4	22.00	£224.07
FCL-250	250	20	90.0	125.0	125.0	180	28.0	28.0	8	25.0	51	4	32.40	£319.64
FCL-280	280	30	100.0	140.0	140.0	200	28.0	40.0	8	28.0	57	4	45.00	£519.88
FCL-315	315	32	112.0	160.0	160.0	236	28.0	40.0	10	28.0	57	4	61.10	£650.90
FCL-355	355	32	125.0	180.0	180.0	260	35.5	56.0	8	35.5	72	5	94.70	£963.97
FCL-400	400	50	125.0	200.0	200.0	300	35.5	56.0	10	35.5	72	5	117.00	£1293.55
FCL-450	450	60	140.0	224.0	224.0	355	35.5	56.0	12	35.5	72	5	156.00	£1738.51
FCL-560	560	80	160.0	250.0	250.0	450	35.5	56.0	14	35.5	72	5	238.00	£2537.73
FCL-630	630	90	180.0	280.0	280.0	530	35.5	56.0	18	35.5	72	5	316.00	£3279.29
FCL-710B	710	110	224.0	315.0	315.0	600	56.0	56.0	24	35.5	72	5	488.00	£7316.65
FCL-711B	710	120	250.0	355.0	355.0	580	80.0	80.0	20	45.0	87	7	633.00	£9013.97
FCL-800B	800	130	265.0	375.0	375.0	670	80.0	80.0	22	45.0	87	7	846.00	£12136.80

### Material

Nut: Steel SS 400

Spring Washer: Steel SWRH 62 (A, B)

Bush: NBR (oil resistant vulcanized rubber)

Washer: Steel SS 400

Flange (body): Cast Iron FC 200

Bolt: Steel SS 400 (Metric Coarse Screw Thread)

Errors of Angularity: 0.17°

### Features

Popular design based on JIS B 1452 (Flanged type) design.

Simple construction, assembled by coupling bolts into two flanges.

Easy to mount and remove.

Maintenance free.

Absorption of parallel &amp; angular misalignment and torsional vibration.

Noise prevention. Not designed for thrust loading.

Reliability of quality proven over time.

+44 (0)1246 455500

+44 (0)1246 455522

**ondrives**

sales@ondrives.com

www.ondrives.com

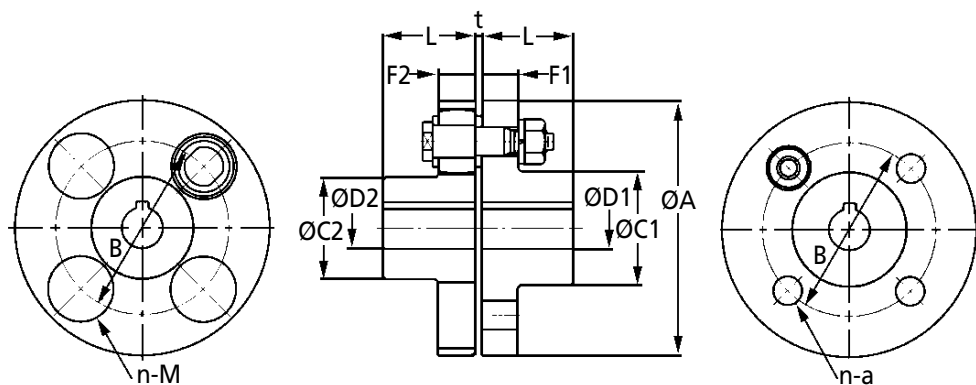
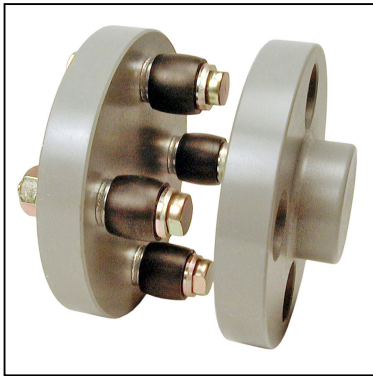
Product information updated 1st April 2011 and subject to change. Please contact Sales for the latest prices and availability.

# COUPLINGS

## Flanged Flexible Shaft Couplings

Forged Steel

FCLS



**Discounts:** 6+ -5% 20+ -10% 30+ -15% 50+ -20% 100+ -30%

Part Number	A	Pilot Bore ØD1 ØD2	L	C1	C2	B	F1	F2	No. of Bolts n	a	M	t	Mass kg	Pilot Bore Price 1 - 5
FCLS-112	112	13	40	50	50	75	16.0	16.0	4	10.0	23	3	3.20	£112.01
FCLS-125	125	13	45	56	50	85	18.0	18.0	4	14.0	32	3	4.33	£123.56
FCLS-140	140	13	50	71	63	100	18.0	18.0	6	14.0	32	3	6.01	£161.44
FCLS-160	160	14	56	80	80	115	18.0	18.0	8	14.0	32	3	8.53	£218.30
FCLS-180	180	14	63	90	90	132	18.0	18.0	8	14.0	32	3	11.50	£257.84
FCLS-200	200	18	71	100	100	145	22.4	22.4	8	20.0	41	4	17.20	£379.80
FCLS-224	224	18	80	112	112	170	22.4	22.4	8	20.0	41	4	22.80	£469.62
FCLS-250	250	20	90	125	125	180	28.0	28.0	8	25.0	51	4	33.50	£676.43
FCLS-280	280	30	100	140	140	200	28.0	40.0	8	28.0	57	4	46.50	£1021.65
FCLS-315	315	32	112	160	160	236	28.0	40.0	10	28.0	57	4	63.20	£1400.66
FCLS-355	355	32	125	180	180	260	35.5	56.0	8	35.5	72	5	98.00	£1961.00
FCLS-400	400	50	125	200	200	300	35.5	56.0	10	35.5	72	5	121.00	£2504.77
FCLS-450	450	60	140	224	224	355	35.5	56.0	12	35.5	72	5	161.00	£3394.65
FCLS-560	560	80	160	250	250	450	35.5	56.0	14	35.5	72	5	246.00	£5602.82
FCLS-630	630	90	180	280	280	530	35.5	56.0	18	35.5	72	5	328.00	£7951.09

### Material

**Nut:** Steel SS 400  
**Spring Washer:** Steel SWRH 62 (A, B)  
**Bush:** NBR (oil resistant vulcanized rubber)  
**Washer:** Steel SS 400  
**Flange (body):** Forged Steel SF 440A  
**Bolt:** Steel SS 400 (Metric Coarse Screw Thread)  
**Errors of Angularity:** 0.17°

### Features

Popular design based on JIS B 1452 (Flanged type) design.  
 Simple construction, assembled by coupling bolts into two flanges.  
 Easy to mount and remove.  
 Maintenance free.  
 Absorption of parallel & angular misalignment and torsional vibration.  
 Noise prevention. Not designed for thrust loading.  
 Reliability of quality proven over time.

+44 (0)1246 455500  
 +44 (0)1246 455522

**ondrives**

sales@ondrives.com  
 www.ondrives.com

Product information updated 1st April 2011 and subject to change. Please contact Sales for the latest prices and availability.

# COUPLINGS

## Flanged Flexible Shaft Couplings

T  
E  
C  
H  
N  
I  
C  
A  
L

Part Number	Withdrawal distance of bolts	Bolt Part No.**	Max. Bore		Max Torque N•m	Max revolution min <sup>-1</sup>	Moment of Inertia* kg•m <sup>2</sup>	Errors of Eccentricity (mm)	Errors of Shaft End Play (mm)
<b>CAST IRON</b>									
FCL-90	50	F1	20	20	15	4000	1.4 x 10 <sup>-3</sup>	0.1	±2.1
FCL-100	56	F2	25	25	29	4000	2.5 x 10 <sup>-3</sup>	0.1	±2.1
FCL-112	56	F2	28	28	33	4000	4.0 x 10 <sup>-3</sup>	0.1	±2.1
FCL-125	64	F3	32	28	73	4000	6.7 x 10 <sup>-3</sup>	0.1	±2.1
FCL-140	64	F3	38	35	130	4000	1.1 x 10 <sup>-2</sup>	0.2	±2.1
FCL-160	64	F3	45	45	200	4000	1.9 x 10 <sup>-2</sup>	0.2	±2.1
FCL-180	64	F3	50	50	230	3500	3.2 x 10 <sup>-2</sup>	0.2	±2.1
FCL-200	85	F4	56	56	440	3200	6.3 x 10 <sup>-2</sup>	0.2	±2.8
FCL-224	85	F4	63	63	510	2850	1.0 x 10 <sup>-1</sup>	0.2	±2.8
FCL-250	100	F5	71	71	850	2550	1.9 x 10 <sup>-1</sup>	0.2	±2.8
FCL-280	116	F6	80	80	1500	2300	3.4 x 10 <sup>-1</sup>	0.3	±2.8
FCL-315	116	F6	90	90	2200	2050	5.6 x 10 <sup>-1</sup>	0.3	±2.8
FCL-355	150	F7	100	100	3500	1800	1.2	0.3	±3.5
FCL-400	150	F7	110	110	5000	1600	1.9	0.3	±3.5
FCL-450	150	F7	125	125	7100	1400	3.0	0.3	±3.5
FCL-560	150	F7	140	140	10000	1150	7.1	0.3	±3.5
FCL-630	150	F7	160	160	16000	1000	12.0	0.3	±3.5
FCL-710B	174	F7	180	180	25000	900	23.0	0.3	±3.5
FCL-711B	240	F8	200	200	34000	900	29.0	0.3	±4.9
FCL-800B	240	F8	210	210	45000	800	52.0	0.3	±4.9
<b>STEEL</b>									
FCLS-112	56	F2	30	30	33	6000	4.1 x 10 <sup>-3</sup>	0.1	±2.1
FCLS-125	64	F3	35	30	73	6000	6.9 x 10 <sup>-3</sup>	0.1	±2.1
FCLS-140	64	F3	42	38	130	6000	1.1 x 10 <sup>-2</sup>	0.2	±2.1
FCLS-160	64	F3	48	48	200	6000	2.0 x 10 <sup>-2</sup>	0.2	±2.1
FCLS-180	64	F3	55	55	230	5250	3.3 x 10 <sup>-2</sup>	0.2	±2.1
FCLS-200	85	F4	60	60	440	4800	6.5 x 10 <sup>-2</sup>	0.2	±2.8
FCLS-224	85	F4	70	70	510	4300	1.0 x 10 <sup>-1</sup>	0.2	±2.8
FCLS-250	100	F5	75	75	850	3800	1.9 x 10 <sup>-1</sup>	0.2	±2.8
FCLS-280	116	F6	85	85	1500	3450	3.5 x 10 <sup>-1</sup>	0.3	±2.8
FCLS-315	116	F6	100	100	2200	3050	5.7 x 10 <sup>-1</sup>	0.3	±2.8
FCLS-355	150	F7	110	110	3500	2700	1.2	0.3	±3.5
FCLS-400	150	F7	125	125	5000	2400	1.9	0.3	±3.5
FCLS-450	150	F7	140	140	7100	2150	3.1	0.3	±3.5
FCLS-560	150	F7	150	150	10000	1700	7.3	0.3	±3.5
FCLS-630	150	F7	170	170	16000	1500	12.0	0.3	±3.5

\* Tolerance on 8mm of diameter (a) is +0.2/0

\*\* Bolt part no. = Dimensions on request.

### Product Standards

The product standards of the flexible flanged shaft coupling are based on JIS B 1452.

The deflection of the outer diameter of the flange and on the coupling face near the outer circumference of the flange to the centre of the shaft bore is 0.03mm

The tolerances on the pitch circle diameters of the bolt bores & the bush bores, the tolerance on the pitch and the deflection of the pitch circle diameter t to the centre of the shaft bore are shown in the table below.

Pitch Circle Diameter	Tolerances on Pitch Diameter and on Pitch	Allowed Value of the Deflection of Pitch Diameter
60, 67, 75	±0.16	0.12
85, 100, 115, 132, 145	±0.20	0.14
170, 180, 200, 236	±0.26	0.18
260, 300, 355, 450, 530	±0.32	0.22
600, 580, 670	±0.40	0.28