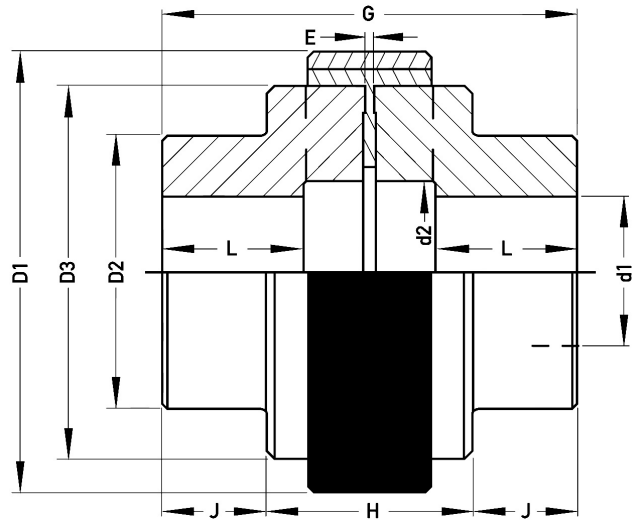
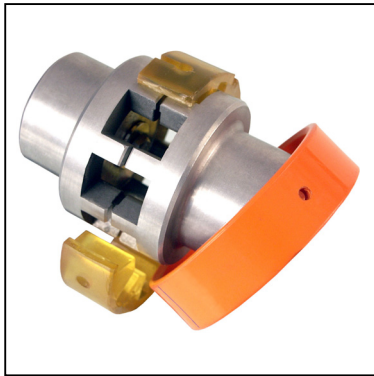


A-PB

COUPLINGS

Elastomeric Couplings



Part Number	STD Insert		HD Insert		Technical Data			Weight Kg	Displacement Values		
	Max. KW per 1000	Max. Cont. Torque Nm	Max. KW per 1000	Max. Cont. Torque Nm	Max. Speed Unbal.	Max. Speed Bal.	Moment of Inertia Kg-m ²		Axial Tolerance	Radial/Parallel	Angular Tolerance
A0-PB	6.00	56.9	-	-	8200	9000	-	1.0	+0.3	0.10	2.0
A1-PB	11.00	107.0	15	142	7250	8000	0.0012	1.8	+0.5	0.10	2.0
A2-PB	30.00	286.0	40	377	5440	6500	0.0050	3.8	+0.5	0.10	2.0
A3B-PB	60.00	569.0	78	740	4200	4800	0.0200	8.5	+0.7	0.15	2.0
A4B-PB	120.00	1139.0	163	1545	3275	3600	0.0750	16.0	+0.8	0.20	1.3
A45-PB	212.00	2014.0	275	2605	2800	3100	0.1020	19.0	+1.0	0.20	1.3
A5B-PB	303.00	2876.0	398	3772	2600	2900	0.2100	31.0	+1.0	0.20	1.3
A55-PB	358.00	3400.0	475	4500	2350	2600	0.2750	36.0	+1.0	0.20	1.3
A6-PB	485.00	4598.0	658	6242	2200	2500	0.4370	47.0	+1.0	0.20	1.3
A7-PB	966.00	9168.0	1170	11104	1900	2200	0.8250	75.0	+1.0	0.30	1.0
A8-PB	1815.00	17225.0	2205	20926	1600	1850	2.3260	137.0	+1.5	0.30	1.0
A9-PB	3023.00	28684.0	3510	33311	1350	1600	4.9500	218.0	+1.5	0.30	1.0
A10-PB	4845.00	45981.0	5663	53739	1100	1250	12.0000	350.0	+2.0	0.40	1.0
A11-PB	5895.00	55945.0	7920	75163	1100	1250	16.0000	410.0	+2.0	0.40	1.0

Part Number	Max. Bore d1	Pilot Bore	D1	D2	D3	d2	G	L	Std. 'DBSE'	Hub Gap E	H	J	Price Each Pilot Bore
A0-PB	34.9	8	65	52	52	32	73	28	17	1.5	-	-	£50.64
A1-PB	41.3	14	83	65	65	39	91	34	23	1.5	-	-	£77.35
A2-PB	53.9	17	111	80	86	45	127	47	33	2.5	55	36	£137.46
A3B-PB	69.8	19	144	105	116	52	156	56	44	2.5	65	45	£253.98
A4B-PB	95.2	24	182	135	150	70	180	63	54	3.5	85	47	£436.91
A45-PB	82.5	25	202	125	170	90	198	70	58	3.5	93	52	£555.90
A5B-PB	114.3	29	225	160	190	89	216	77	62	3.5	101	57	£740.98
A55-PB	101.6	30	250	155	215	115	246	90	66	3.5	109	68	£740.78
A6-PB	114.3	39	265	180	233	112	260	95	70	3.5	119	70	£894.94
A7-PB	139.7	48	306	205	267	135	310	116	78	4.0	134	88	£1442.94
A8-PB	150.0	63	363	242	326	157	382	147	88	5.0	154	114	£2226.70
A9-PB	180.0	73	425	280	385	188	420	162	95	5.0	162	129	£3856.58
A10-PB	210.0	96	523	330	483	218	482	188	106	6.0	192	145	£6433.49
A11-PB	210.0	96	503	350	458	216	512	190	132	6.0	216	148	£P.O.A

- 1) STD inserts will be supplied as standard unless specified. High Torque (HD) Inserts can be supplied upon request.
- 2) Maximum speeds are based on Cast Iron Hubs. Higher speeds may be attained using Ductile Iron or Steel Hubs - Consult sales.
- 3) Distance Between Shaft ends (DBSE) is based on the shafts mating flush with the end of the hub face. Short or longer shaft separations may be obtained by overhanging the shaft or hub.
- 4) Weights and Inertias are based on solid hubs.

Material

Hub: Cast iron**Insert:** Yellow polyurethane, 95 shore hardness**Holding Ring:** Polyamide (sizes A00 to A4) Steel (All other sizes)**Note:** Other materials are available on request, please ask sales for details.**Note:** Other bores sizes are available on request, up to the max. bore size stated above. Please specify your required bore size when ordering.

+44 (0)1246 455500

+44 (0)1246 455522

ondrives

sales@ondrives.com

www.ondrives.com

Product information updated 1st April 2011 and subject to change. Please contact Sales for the latest prices and availability.