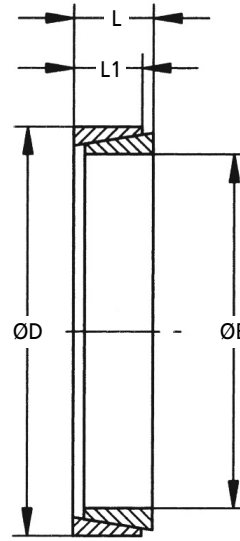


COUPLINGS

OKSD50

Locking Elements

2.4 - 2,200Nm, 6 - 80mm Bores



Part Number	ØB x ØD	Torque Nm	L	L1	Shaft Pw N/mm ²	Hub Pn N/mm ²	Tension FA N	Mass kg	Price Each
OKSD50-6X9	6x9	2.4	4.5	3.7	115	75	3800	0.0012	£9.25
OKSD50-7X10	7x10	3.0	4.5	3.7	105	70	3900	0.0014	£9.25
OKSD50-8X11	8x11	4.7	4.5	3.7	120	90	5300	0.0015	£9.25
OKSD50-9X12	9x12	7.9	4.5	3.7	140	105	15600	0.0017	£9.25
OKSD50-10X13	10x13	9.5	4.5	3.7	135	105	15600	0.0018	£9.25
OKSD50-12X15	12x15	11.4	4.5	3.7	115	90	15600	0.0021	£9.25
OKSD50-13X16	13x16	13.1	4.5	3.7	110	90	15600	0.0023	£9.25
OKSD50-14X18	14x18	22.3	6.3	5.3	115	90	25400	0.0049	£9.25
OKSD50-15X19	15x19	24.3	6.3	5.3	110	85	25400	0.0053	£9.25
OKSD50-16X20	16x20	27.3	6.3	5.3	105	85	25400	0.0055	£9.25
OKSD50-17X21	17x21	29.8	6.3	5.3	105	85	25400	0.0058	£9.25
OKSD50-18X22	18x22	32.4	6.3	5.3	100	80	25400	0.0061	£9.25
OKSD50-19X24	19x24	49.0	6.3	5.3	140	110	36000	0.0078	£9.67
OKSD50-20X25	20x25	53.0	6.3	5.3	135	105	36000	0.0082	£9.67
OKSD50-22X26	22x26	66.0	6.3	5.3	135	115	36000	0.0072	£9.67
OKSD50-24X28	24x28	73.0	6.3	5.3	130	110	36000	0.0080	£9.67
OKSD50-25X30	25x30	72.0	6.3	5.3	115	105	36000	0.0100	£9.67
OKSD50-28X32	28x32	86.0	6.3	5.3	115	100	36000	0.0090	£10.13
OKSD50-30X35	30x35	91.0	6.3	5.3	100	85	45000	0.0120	£10.13
OKSD50-32X36	32x36	131.0	6.3	5.3	130	115	54000	0.0100	£10.13
OKSD50-35X40	35x40	171.0	7.0	6.0	125	110	54000	0.0170	£10.13
OKSD50-36X42	36x42	169.0	7.0	6.0	115	100	54000	0.0200	£10.66
OKSD50-38X44	38x44	181.0	7.0	6.0	110	95	66000	0.0210	£10.66
OKSD50-40X45	40x45	231.0	8.0	6.6	115	105	66000	0.0230	£10.66
OKSD50-42X48	42x48	235.0	8.0	6.6	110	95	99000	0.0280	£12.26
OKSD50-45X52	45x52	353.0	10.0	8.6	105	95	132000	0.0420	£32.01
OKSD50-48X55	48x55	572.0	10.0	8.6	155	135	132000	0.0450	£32.01
OKSD50-50X57	50x57	602.0	10.0	8.6	150	130	132000	0.0470	£14.85
OKSD50-55X62	55x62	670.0	10.0	8.6	140	125	157200	0.0500	£15.33
OKSD50-56X64	56x64	790.0	12.0	10.4	130	115	157200	0.0670	£15.73
OKSD50-60X68	60x68	860.0	12.0	10.4	125	110	157200	0.0720	£16.26
OKSD50-63X71	63x71	910.0	12.0	10.4	120	105	157200	0.0770	£18.86
OKSD50-65X73	65x73	950.0	12.0	10.4	115	100	157200	0.0790	£19.80
OKSD50-70X79	70x79	1380.0	14.0	12.2	125	110	209600	0.1100	£22.40
OKSD50-75X84	75x84	1450.0	14.0	12.2	115	100	209600	0.1300	£25.94
OKSD50-80X91	80x91	2200.0	17.0	15.0	125	105	290000	0.1900	£28.42

Material

ETG 100 High Strength Steel (≤55mm).
C60 Steel (060A62) (>55mm).
Also available in Stainless Steel - POA.

Features

Recommended machining tolerances: Shaft h8, Hub H8.

+44 (0)1246 455500
+44 (0)1246 455522

ondrives

sales@ondrives.com
www.ondrives.com

Product information updated 1st April 2011 and subject to change. Please contact Sales for the latest prices and availability.