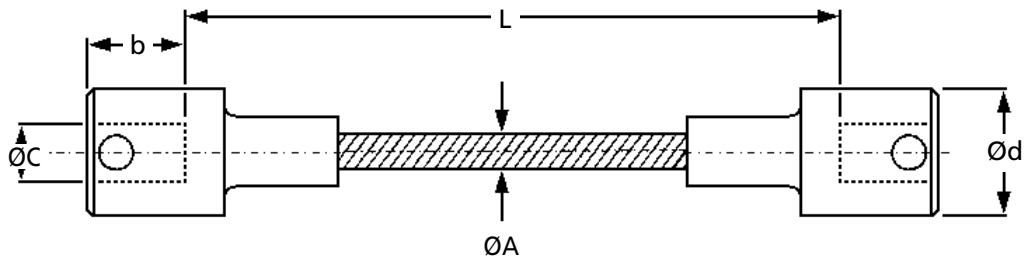
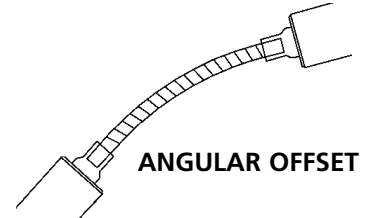
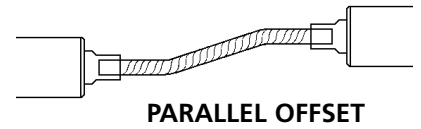
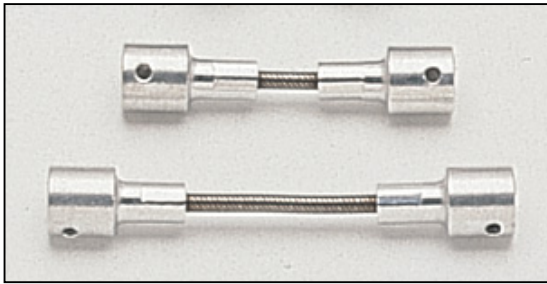


COUPLINGS

FLF

Flexi-Shafts

0.35 - 15.8Nm, 3 - 10mm Bores



Discounts: 5+ -5% 10+ -20% 25+ -30% 50+ -50% 100+ -60%

Part Number	ØA	L	b	Øc	Ød	Max. Angular Offset	Max. Parallel Offset	Max. Speed (rpm)	Max. Torque (Nm)	Price Each 1 - 4
FLF03010-03	3.0	33	8	3	12	2.05°	0.35	8000	0.353	£50.61
FLF03020-03	3.0	43	8	3	12	4.00°	1.40	8000	0.226	£50.61
FLF03030-03	3.0	53	8	3	12	6.10°	3.20	8000	0.119	£51.66
FLF03040-03	3.0	63	8	3	12	8.15°	5.65	8000	0.085	£51.66
FLF04020-04	4.0	47	8	4	12	3.75°	1.25	8000	0.452	£54.79
FLF04030-04	4.0	57	8	4	12	5.50°	3.00	8000	0.237	£54.79
FLF04040-04	4.0	67	8	4	12	7.50°	5.30	8000	0.141	£54.79
FLF05020-05	5.0	53	10	5	14	3.25°	1.18	6000	1.360	£56.37
FLF05030-05	5.0	63	10	5	14	5.00°	2.60	6000	0.780	£56.37
FLF05040-05	5.0	73	10	5	14	6.70°	4.50	6000	0.640	£58.48
FLF05050-05	5.0	83	10	5	14	8.40°	7.30	6000	0.400	£58.48
FLF06030-06	6.0	71	12	6	16	4.30°	2.25	3600	1.990	£65.24
FLF06040-06	6.0	81	12	6	16	5.70°	4.00	3600	1.450	£60.10
FLF06050-06	6.0	91	12	6	16	7.16°	6.25	3600	1.000	£66.31
FLF06075-06	6.0	116	12	6	16	10.50°	13.90	3600	0.490	£66.31
FLF09050-08	9.5	101	15	8	23	7.15°	6.20	3600	4.330	£82.99
FLF09075-08	9.5	126	15	8	23	10.70°	13.75	3600	2.710	£82.99
FLF09100-08	9.5	151	15	8	23	14.30°	24.50	3600	1.790	£84.54
FLF09125-08	9.5	176	15	8	23	17.90°	37.80	3600	1.420	£84.54
FLF12050-10	12.7	112	15	10	23	4.75°	4.15	3600	15.820	£103.35
FLF12075-10	12.7	137	15	10	23	7.15°	9.25	3600	11.850	£104.91
FLF12100-10	12.7	162	15	10	23	9.50°	16.50	3600	7.900	£107.59
FLF12125-10	12.7	187	15	10	23	11.90°	25.65	3600	6.350	£109.16

Material

Hubs: 220 MO7

Shaft: Steel

Extras

Stainless Steel and non-magnetic ends and shafting available on request.

Other Info.

Non-standard lengths can be easily and quickly manufactured.

+44 (0)1246 455500

+44 (0)1246 455522

ondrives

sales@ondrives.com

www.ondrives.com

Product information updated 1st April 2011 and subject to change. Please contact Sales for the latest prices and availability.