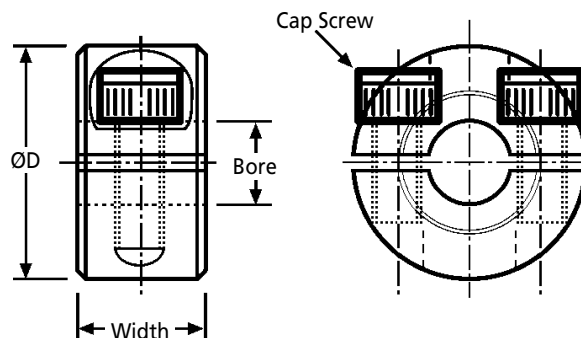


COUPLINGS

2LM
2SM

Shaft Collars

2-Piece Clamp Fixing : 3 - 80mm Bores



Discounts: 50+ -10% 100+ -15% 200+ -20% 500+ -30%

Part Number		Bore Size	ØD	Width	Screw	Price Each 1 - 49	
Steel	Stainless					Steel	Stainless
2LM003	2SM003	3	16	9	M3x8	£8.74	£11.55
2LM004	2SM004	4	16	9	M3x8	£8.35	£P.O.A
2LM005	2SM005	5	16	9	M3x8	£7.09	£11.90
2LM006	2SM006	6	16	9	M3x8	£7.09	£18.28
2LM008	2SM008	8	18	9	M3x8	£7.28	£15.68
2LM009	2SM009	9	24	9	M3x10	£7.58	£13.66
2LM010	2SM010	10	24	9	M3x10	£7.58	£19.16
2LM011	2SM011	11	28	11	M4x12	£P.O.A	£P.O.A
2LM012	2SM012	12	28	11	M4x12	£7.68	£19.67
2LM014	2SM014	14	30	11	M4x12	£8.19	£22.81
2LM015	2SM015	15	34	13	M5x16	£8.19	£25.87
2LM016	2SM016	16	34	13	M5x16	£8.19	£25.87
2LM017	2SM017	17	36	13	M5x16	£P.O.A	£P.O.A
2LM018	2SM018	18	36	13	M5x16	£8.74	£28.61
2LM019	2SM019	19	40	15	M6x16	£P.O.A	£P.O.A
2LM020	2SM020	20	40	15	M6x16	£8.96	£27.59
2LM022	2SM022	22	42	15	M6x16	£P.O.A	£P.O.A
2LM024	2SM024	24	45	15	M6x16	£P.O.A	£P.O.A
2LM025	2SM025	25	45	15	M6x16	£9.60	£29.64
2LM028	2SM028	28	48	15	M6x16	£P.O.A	£P.O.A
2LM030	2SM030	30	54	15	M6x18	£10.59	£39.17
2LM032	2SM032	32	54	15	M6x18	£70.03	£P.O.A
2LM035	2SM035	35	57	15	M6x18	£13.14	£48.63
2LM040	2SM040	40	60	15	M6x18	£13.66	£64.87
2LM045	2SM045	45	73	19	M6x18	£21.45	£103.83
2LM050	2SM050	50	78	19	M8x25	£24.08	£112.96
2LM055	2SM055	55	82	19	M8x25	£28.27	£124.39
2LM060	2SM060	60	88	19	M8x25	£41.00	£126.72
2LM065	2SM065	65	93	19	M8x25	£44.90	£139.37
2LM070	2SM070	70	98	19	M8x25	£46.85	£153.32
2LM075	2SM075	75	103	19	M8x25	£50.75	£162.36
2LM080	2SM080	80	108	19	M8x25	£58.55	£176.31

Material

Steel 12L14 (9SMn Pb36)
Stainless 303

Features

- Comes apart easily
- Easily installed anywhere
- High axial load
- Non-marring
- Use on hardened shafts, tubing or split hubs
- Easily Machinable
- All parts are supplied with bore size stamped on
- Steel parts are supplied with a black finish and alloy steel cap screws
- Stainless steel parts have A2 screws

+44 (0)1246 455500
+44 (0)1246 455522

ondrives

sales@ondrives.com
www.ondrives.com

Product information updated 1st April 2011 and subject to change. Please contact Sales for the latest prices and availability.