

COUPLINGS

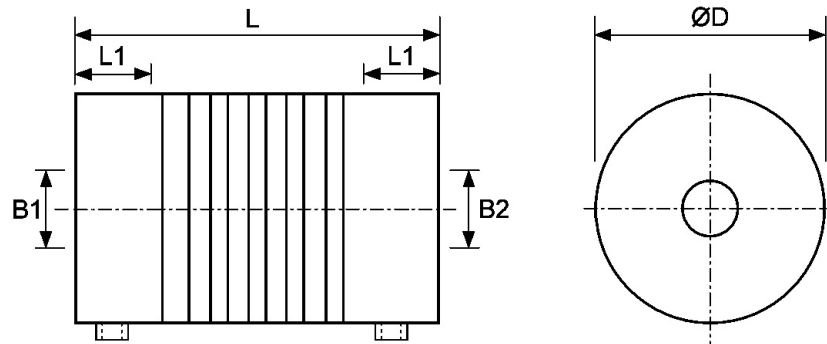
**TLS
TLC**

Step-Beam™ Couplings

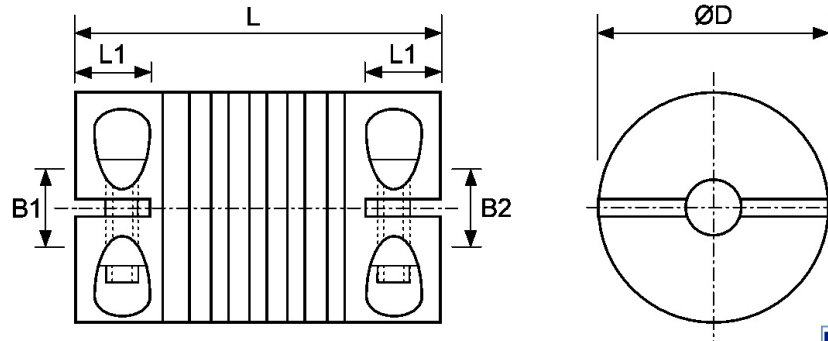
No Backlash or Wind Up



Set Screw Style



Clamp Style



Discounts: 25+ -10%

Part Number	ØD	L	L1*	B1 & B2 Bores		Screw	Max. Angular Offset	Max. Parallel Offset	Max. Torque Nm	Torsional Stiffness Nm/rad	Price Each 1 - 24
				Min.	Max.						
Set Screw											
TLS-13	12.7	18	5.0	3.00	6.35	M2	3°	0.15	0.5	5.2	£30.56
TLS-19	19.0	28	6.8	3.17	9.53	M2.5	4°	0.20	2.0	10.0	£33.99
TLS-25	25.0	36	10.0	6.00	12.70	M4	5°	0.30	3.8	18.0	£41.13
Clamp											
TLC-13	12.7	18	5.0	3.00	6.35	M2	3°	0.15	0.5	5.2	£38.88
TLC-19	19.0	28	6.8	3.17	9.53	M2.5	4°	0.20	2.0	10.0	£46.37
TLC-25	25.0	36	10.0	6.00	12.70	M3	5°	0.30	3.8	18.0	£55.87

*L1 is the maximum shaft penetration depth.

Material

Couplers: Moulded engineered polymer

Fastener: Stainless steel

Step-Beam™ Trade Mark is registered in both the UK & USA.

Product is patented in the UK & USA.

Performance

Temperature Range: -20°C to +140°C

Features

- Maximum torque is useable without derating
- Clamp or set screw fixing available
- Equal or superior to:
 - 1 and 3 beam aluminium
 - 1 beam stainless
 - Plastic/acetal couplings

+44 (0)1246 455500

+44 (0)1246 455522

ondrives

sales@ondrives.com

www.ondrives.com

Product information updated 1st April 2011 and subject to change. Please contact Sales for the latest prices and availability.