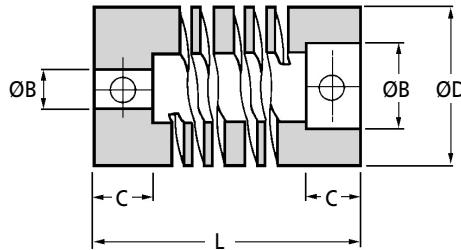


**BS  
BSN**

# COUPLINGS

## Spiral-Beam 6 Beam Coupling

Backlash Free, Set Screw Fixing : 0.10 - 73Nm, 1.5 - 28mm Bores



### Extras

**Boring Out:** upto 25mm £4.84 per end, 26mm-49mm £11.70 per end, Add bore size required to end of part number eg. **BS21-2/3** (bored Ø2mm & Ø3mm)

**Pin Hole:** Any Size £4.84 each.

**Tapped Holes:** upto M8 incl. £7.17 each, over M8 £11.39 each.

**Discounts:** 20+ -15%    40+ -20%    60+ -25%    100+ -30%

Part Number	* New Pilot Bore ØB	Finished Bore ØB	Max Bore ØB	ØD	L	C	Set Screw	Ang. Offset	Para Offset	Torque Nm			Price Each 1 - 19
										Non Reversing	Shock & Reversing	Max Torque	
<b>ALUMINIUM</b>													
BS21 PB	1.5 x 2.0	-	3.00	6.35	12.70	3.18	M2	3°	0.07	0.20	0.10	0.40	£19.15
BS21-3X3	-	3 x 3	3.00	6.35	12.70	3.18	M2	3°	0.07	0.20	0.10	0.40	£24.24
BS22 PB	1.6 x 2.9	-	4.76	9.52	19.56	5.30	M2.5	5°	0.12	0.50	0.25	1.00	£19.15
BS22-3X3	-	3 x 3	4.76	9.52	19.56	5.30	M2.5	5°	0.12	0.50	0.25	1.00	£21.46
BS23 PB	2.5 x 4.5	-	6.35	12.70	22.86	6.50	M3	5°	0.17	1.00	0.50	2.00	£23.95
BS23-4X4	-	4 x 4	6.35	12.70	22.86	6.50	M3	5°	0.17	1.00	0.50	2.00	£28.16
BS24 PB	2.7 x 5.8	-	10.00	19.05	26.50	6.50	M4	7°	0.25	2.60	1.30	5.30	£29.79
BS24-5X6	-	5 x 6	10.00	19.05	26.50	6.50	M4	7°	0.25	2.60	1.30	5.30	£30.51
BS25 PB	3.3 x 7.5	-	12.70	25.40	38.10	11.00	M5	7°	0.38	5.00	2.50	10.00	£32.50
BS25-6X6	-	6 x 6	12.70	25.40	38.10	11.00	M5	7°	0.38	5.00	2.50	10.00	£36.42
BS266 PB	5.0 x 9.2	-	19.00	31.75	57.15	16.00	M6	7°	0.50	7.50	3.75	15.00	£80.15
BS266-8X10	-	8 x 10	19.00	31.75	57.15	16.00	M6	7°	0.50	7.50	3.75	15.00	£89.78
BS27 PB	6.8 x 11.0	-	22.00	38.10	66.67	18.00	M6	7°	0.60	11.00	5.50	22.00	£83.97
BS27-10X12	-	10 x 12	22.00	38.10	66.67	18.00	M6	7°	0.60	11.00	5.50	22.00	£92.16
BS29 PB	10.0 x 15.0	-	28.00	50.80	95.30	25.00	M6	7°	0.80	20.00	10.00	40.00	£136.35
BS29-14X16	-	14 x 16	28.00	50.80	95.30	25.00	M6	7°	0.80	20.00	10.00	40.00	£146.28
<b>STAINLESS</b>													
BS31 PB	1.5 x 2.0	-	3.00	6.35	12.70	3.18	M2	3°	0.07	0.30	0.15	0.60	£45.38
BS31-3X3	-	3 x 3	3.00	6.35	12.70	3.18	M2	3°	0.07	0.30	0.15	0.60	£49.26
BS32 PB	1.6 x 2.9	-	4.76	9.52	19.56	5.30	M2.5	5°	0.12	0.75	0.38	1.50	£45.38
BS32-3X3	-	3 x 3	4.76	9.52	19.56	5.30	M2.5	5°	0.12	0.75	0.38	1.50	£50.84
BS33 PB	2.5 x 4.5	-	6.35	12.70	25.40	6.50	M3	5°	0.17	1.50	0.75	3.00	£45.38
BS33-4X4	-	4 x 4	6.35	12.70	25.40	6.50	M3	5°	0.17	1.50	0.75	3.00	£50.84
BS34 PB	2.7 x 5.8	-	10.00	19.05	28.00	6.50	M4	7°	0.25	4.00	2.00	8.00	£56.78
BS34-5X6	-	5 x 6	10.00	19.05	28.00	6.50	M4	7°	0.25	4.00	2.00	8.00	£63.58
BS35 PB	3.3 x 7.5	-	12.70	25.40	38.10	11.00	M5	7°	0.38	8.00	4.00	16.00	£81.80
BS35-6X6	-	6 x 6	12.70	25.40	38.10	11.00	M5	7°	0.38	8.00	4.00	16.00	£91.60
BS36 PB	5.0 x 9.2	-	19.00	31.75	57.15	16.00	M6	7°	0.50	12.50	6.25	25.00	£117.45
BS36-8X10	-	8 x 10	19.00	31.75	57.15	16.00	M6	7°	0.50	12.50	6.25	25.00	£129.40
BS37 PB	6.8 x 11.0	-	22.00	38.10	66.67	18.00	M6	7°	0.60	18.00	9.00	36.00	£122.91
BS37-10X12	-	10 x 12	22.00	38.10	66.67	18.00	M6	7°	0.60	18.00	9.00	36.00	£134.86
BS39 PB	10.0 x 15.0	-	28.00	50.80	95.13	25.00	M6	7°	0.80	36.50	18.25	73.00	£221.57
BS39-14X16	-	14 x 16	28.00	50.80	95.13	25.00	M6	7°	0.80	36.50	18.25	73.00	£233.50
<b>DELTRIN</b>													
BSN3 PB	2.5 x 4.5	-	6.35	12.70	22.86	6.50	M3	5°	0.18	0.25	0.13	0.51	£30.32
BSN4 PB	2.7 x 5.8	-	10.00	19.05	26.50	6.50	M4	7°	0.25	0.64	0.32	1.27	£33.09
BSN5 PB	3.3 x 7.5	-	12.70	25.40	38.10	11.00	M5	7°	0.38	1.38	0.69	3.39	£45.50
BSN6 PB	5.0 x 9.2	-	19.00	31.75	57.15	16.00	M6	10°	0.50	2.00	1.00	3.84	£57.91
BSN7 PB	6.8 x 11.0	-	22.00	38.10	66.67	18.00	M6	10°	0.68	3.00	1.50	5.65	£80.01
BSN9 PB	10.0 x 15.0	-	28.00	50.80	95.30	25.00	M6	10°	0.90	6.00	3.00	11.98	£107.61

### Material

BS2: Aluminium L168 (HE15TF) BS3: Stainless Steel 303 3SU BSN: Delrin

### Other Info.

Pilot Bore size not toleranced. **PB = Pilot Bored.** Finished Bore sizes to +0.03/0.00. Max. torque rating for momentary loads only. If chamber modified torque figures will change. The chamber diameter normally corresponds to the maximum permissible end bore.

### STATIC TORSIONAL STIFFNESS Nm/Rad

BS22	2	BS32	6	BSN3	1.5
BS23	16	BS33	28	BSN4	3.0
BS24	51	BS34	80	BSN5	9.0
BS25	120	BS35	189	BSN6	16.0
BS26	250	BS36	405	BSN7	24.0
BS27	370	BS37	720	BSN9	47.0
BS29	760	BS39	1450		

\* Some stock may remain at the previous pilot bore size which will be superceded with the new sizes when new stock is introduced.

+44 (0)1246 455500  
+44 (0)1246 455522

**ondrives**

sales@ondrives.com  
www.ondrives.com

Product information updated 1st April 2011 and subject to change. Please contact Sales for the latest prices and availability.