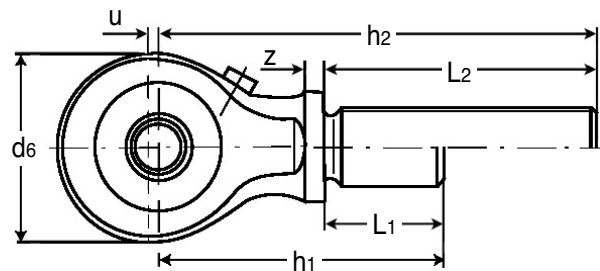
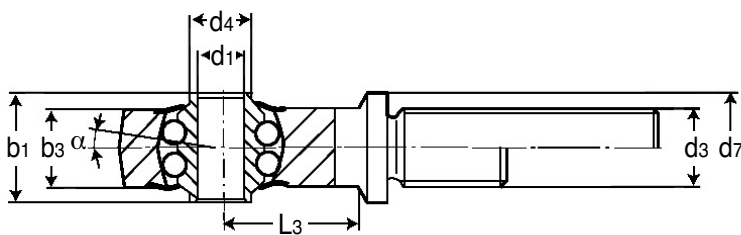


PM

BEARINGS

Heavy Duty Male Threaded Rod Ends

with Integral Self-Aligning Ball Bearing : 5 - 20mm Bores, M8x1 - M24x1.5

**Discounts:** 26+ -5% 51+ -10% 101+ -15% 151+ -20% 200+ -25%

Part Number Right Hand Thread	Part Number Left Hand Thread	d1	d3	d4	d6	d7	b1	b3	h1*	h2	u	z
PM-05/RH	PM-05/LH	5	M8x1.0	7.5	19	12	12	8	33.5	57	1.5	2.5
PM-06/RH	PM-06/LH	6	M10x1.0	8.5	24	14	14	10	40.5	64	1.5	2.5
PM-08/RH	PM-08/LH	8	M12x1.5	11.0	30	17	15	10	48.5	72	2.0	2.5
PM-10/RH	PM-10/LH	10	M14x1.5	13.5	36	19	20	14	58.5	82	2.5	2.5
PM-12/RH	PM-12/LH	12	M16x1.5	15.0	40	21	20	14	65.5	90	3.0	2.5
PM-15/RH	PM-15/LH	15	M20x1.5	18.5	42	26	20	14	73.5	100	3.0	2.5
PM-17/RH	PM-17/LH	17	M20x1.5	21.0	48	26	22	16	78.5	105	3.5	2.5
PM-20/RH	PM-20/LH	20	M24x1.5	24.0	56	30	24	18	89.5	117	3.5	3.0

L1*	L2	L3	α°	Weight kg		Calculation factors		Speed limit n _{max} ^(min-1)	Basic load rating (N)		Price Each 1 - 4	
				Long Length	Short* Length	Y	Yo		dyn. C	stat. C0	Right Hand Thread	Left Hand Thread
16	39.5	13	7.0°	0.037	0.033	1.51	1.58	1350	1610	480	£44.85	£44.85
19	42.5	17	10.5°	0.062	0.057	1.28	1.34	1300	2445	765	£43.41	£43.41
23	46.5	20	8.5°	0.097	0.088	1.90	1.81	1225	2605	985	£46.96	£46.96
26	49.5	28	9.5°	0.168	0.154	1.69	1.77	1100	5120	1905	£51.92	£51.92
29	53.5	31	7.5°	0.226	0.204	1.81	1.90	1050	5345	2065	£59.67	£59.67
36	62.5	30	6.5°	0.310	0.273	2.07	2.17	975	5485	3270	£68.88	£68.88
36	62.5	36	7.0°	0.401	0.354	2.35	2.46	875	5575	2680	£78.40	£78.40
41	68.5	41	5.5°	0.587	0.519	2.76	2.90	775	6165	3140	£102.09	£102.09

Material

Rod End Housing: Forged steel, tempered, case hardened bearing race, ground and lapped, rolled thread, surface galvanized**Inner Ring:** Ball bearing steel, hardened, superfine ground**Lubrication:** Calcium-complex-soap-grease

Features

- Low maintenance
- Longtime lubrication
- Shields
- Lubrication temperature range -20°C to +120°C
- Lubrication nipple DIN 3405 D1/A
- Bearing clearance 15-40µm radial

Other Info

*These shorter lengths are available on request, eg: **PM-06/RH-SHORT**.

Contact sales for further details.

+44 (0)1246 455500

+44 (0)1246 455522

ondrives

sales@ondrives.com

www.ondrives.com

Product information updated 1st April 2011 and subject to change. Please contact Sales for the latest prices and availability.