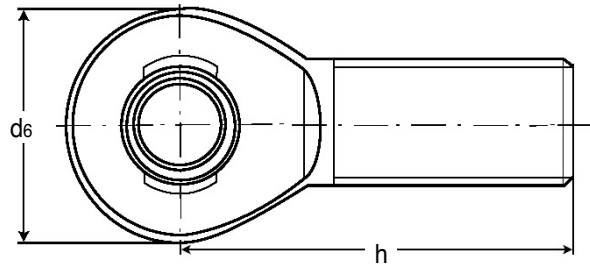
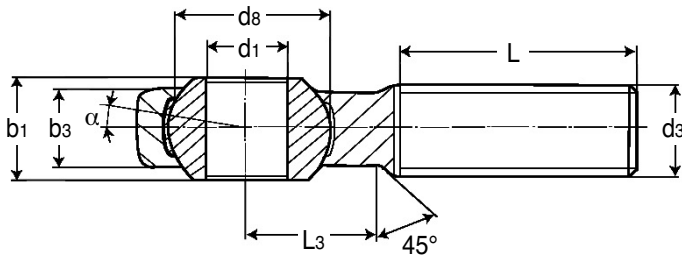


**EM**

# BEARINGS

## Heavy Duty Male Threaded Rod Ends

with Integral Spherical Plain Bearing : 6 - 60mm Bores, M6 - M60x4

**Discounts:** 26+ -5%   51+ -10%   101+ -15%   151+ -20%   200+ -25%

Part Number Right Hand Thread	Part Number Left Hand Thread	d1	d3	d6	d8	b1	b3	h
EM-06/RH	EM-06/LH	6	M6	20	10.0	6	4	36
EM-08/RH	EM-08/LH	8	M8	23	13.0	8	5	42
EM-10/RH	EM-10/LH	10	M10	28	16.0	9	6	48
EM-12/RH	EM-12/LH	12	M12	32	18.0	10	7	54
EM-15/RH	EM-15/LH	15	M14	38	22.0	12	9	63
EM-17/RH	EM-17/LH	17	M16	44	25.0	14	10	69
EM-20/RH	EM-20/LH	20	M20x1.5	51	29.0	16	12	78
EM-25/RH	EM-25/LH	25	M24x2.0	62	35.5	20	16	94
EM-30/RH	EM-30/LH	30	M30x2.0	70	40.7	22	18	110
EM-35/RH	EM-35/LH	35	M36x3.0	82	47.0	25	20	140
EM-40/RH	EM-40/LH	40	M42x3.0	92	53.0	28	22	145
EM-45/RH	EM-45/LH	45	M45x3.0	102	60.0	32	25	165
EM-50/RH	EM-50/LH	50	M52x3.0	112	66.0	35	28	195
EM-60/RH	EM-60/LH	60	M60x4.0	135	80.0	44	36	225

L	L3	α1*	α2*	Weight kg	Basic load rating (N) dyn. C	Basic load rating (N) stat. C0	Price Each 1 - 4 Right Hand Thread	Price Each 1 - 4 Left Hand Thread
22	11	13.0°	6.5°	0.014	2500	6400	£13.74	£13.74
25	12	15.0°	8.0°	0.024	4200	11000	£15.16	£15.16
29	15	12.0°	6.0°	0.041	6400	16800	£17.99	£17.99
33	15	10.5°	5.0°	0.067	9200	23000	£20.82	£20.82
36	18	8.5°	4.5°	0.110	13400	39600	£31.06	£31.06
40	23	10.0°	5.5°	0.163	19200	54100	£36.68	£36.68
47	25	9.0°	4.5°	0.270	25200	76700	£44.15	£44.15
57	32	7.5°	3.5°	0.508	42400	119100	£66.74	£66.74
66	35	6.0°	3.0°	0.785	54000	141800	£88.99	£88.99
92	38	6.5°	3.5°	1.330	70400	180800	£124.63	£124.63
94	42	7.0°	3.5°	1.890	86000	222600	£238.11	£238.11
100	50	7.5°	4.0°	2.620	107000	276200	£308.55	£308.55
120	60	6.5°	3.0°	3.865	132000	339200	£363.07	£363.07
140	70	6.5°	3.5°	6.400	208000	532100	£599.18	£599.18

\* angle of tilt

### Material

**Rod End Housing:** Forged steel, tempered, rolled thread, surface galvanized**Joint Ball:** Ball bearing steel, hardened and ground, surface superfinished, chromium plated**Race:** Nylon/Teflon/Glass compound

### Features

- Maintenance free
- Adapter sizes according to ISO12240-4, series E

+44 (0)1246 455500

+44 (0)1246 455522

**ondrives**

sales@ondrives.com

www.ondrives.com

Product information updated 1st April 2011 and subject to change. Please contact Sales for the latest prices and availability.