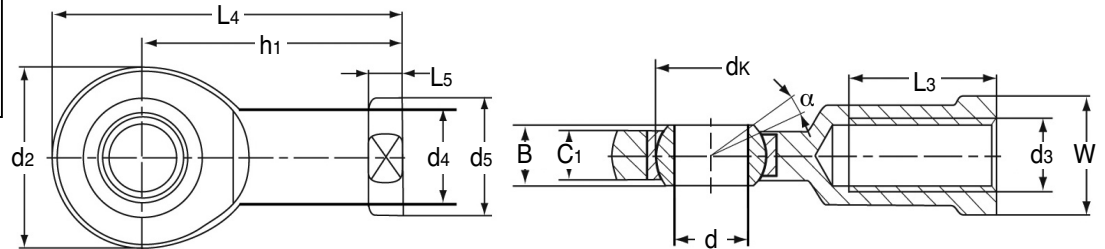


BEARINGS

**DGIR
DGIL**

Heavy Duty Female Threaded Rod Ends

Ferrobol Range : 6 - 80mm Bores, M6 - M64x4



Discounts: 26+ -5% | 51+ -10% | 101+ -15% | 151+ -20% | 200+ -25%

Part Number Right Hand Thread	Part Number Left Hand Thread	d	d3	d2 max.	d4 max.	d5 max.	B	C1 max.	dk	h1
DGIR-06	DGIL-06	6	M6	21	10.0	13	6	4.4	10.0	30
DGIR-08	DGIL-08	8	M8	24	12.5	16	8	6.0	13.0	36
DGIR-10	DGIL-10	10	M10	29	15.0	19	9	7.0	16.0	43
DGIR-12	DGIL-12	12	M12	34	17.5	22	10	8.0	18.0	50
DGIR-15	DGIL-15	15	M14	40	21.0	26	12	10.0	22.0	61
DGIR-17	DGIL-17	17	M16	46	24.0	30	14	11.0	25.0	67
DGIR-20	DGIL-20	20	M20x1.5	53	27.5	35	16	13.0	29.0	77
DGIR-25	DGIL-25	25	M24x2.0	64	33.5	42	20	17.0	35.5	94
DGIR-30	DGIL-30	30	M30x2.0	73	40.0	50	22	19.0	40.7	110
DGIR-35/2RS	DGIL-35/2RS	35	M36x3.0	82	47.0	58	25	21.0	47.0	125
DGIR-40/2RS	DGIL-40/2RS	40	M39x3.0	92	52.0	65	28	23.0	53.0	142
DGIR-45/2RS	DGIL-45/2RS	45	M42x3.0	102	58.0	70	32	27.0	60.0	145
DGIR-50/2RS	DGIL-50/2RS	50	M45x3.0	112	62.0	75	35	30.0	66.0	160
DGIR-60/2RS	DGIL-60/2RS	60	M52x3.0	135	70.0	88	44	38.0	80.0	175
DGIR-70/2RS	DGIL-70/2RS	70	M56x4.0	160	80.0	98	49	42.0	92.0	200
DGIR-80/2RS	DGIL-80/2RS	80	M64x4.0	180	95.0	110	55	47.0	105.0	230

L3 min.	L4 max.	L5 min.	W	α°	Weight kg	Load rating (KN)		Price Each	
						C	C0	Right Hand Thread	Left Hand Thread
11	40.5	5.0	11	13°	0.021	3.6	8.2	£P.O.A	£P.O.A
15	48.0	5.0	14	15°	0.039	5.9	12.9	£P.O.A	£P.O.A
20	57.5	6.5	17	12°	0.061	8.7	17.6	£P.O.A	£P.O.A
23	67.0	6.5	19	11°	0.096	11.4	24.5	£P.O.A	£P.O.A
30	81.0	8.0	22	8°	0.180	17.6	36.0	£P.O.A	£P.O.A
34	90.0	10.0	27	10°	0.220	22.4	45.0	£P.O.A	£P.O.A
40	103.5	10.0	32	9°	0.350	31.5	60.0	£P.O.A	£P.O.A
48	126.0	12.0	36	7°	0.640	51.0	83.0	£P.O.A	£P.O.A
56	146.5	15.0	41	6°	0.930	66.5	110.0	£P.O.A	£P.O.A
60	166.0	15.0	50	6°	1.300	112.0	146.0	£P.O.A	£P.O.A
65	188.0	18.0	55	7°	2.000	140.0	180.0	£P.O.A	£P.O.A
65	196.0	20.0	60	7°	2.500	180.0	240.0	£P.O.A	£P.O.A
68	216.0	20.0	65	6°	3.500	220.0	290.0	£P.O.A	£P.O.A
70	242.5	20.0	75	6°	5.500	345.0	450.0	£P.O.A	£P.O.A
80	280.0	20.0	85	6°	8.600	440.0	610.0	£P.O.A	£P.O.A
85	320.0	25.0	100	6°	12.000	570.0	750.0	£P.O.A	£P.O.A

Material

Sliding combination: Steel/bronze- PTFE fabric

Inner ring: Bearing steel, hardened, ground and chromium plated.

Outer ring: Heavy duty bronze with embedded bronze - PTFE fabric

Note: these are economy products and large quantities must be quoted for. Please contact sales for further details.

Features

- Maintenance free and no lubrication necessary
- Adapter sizes according to ISO12240-4, series E
- When $d \geq 35$ the rod ends are supplied with additional seals on both sides. eg: DGIR-35/2RS

* angle of tilt

+44 (0)1246 455500
+44 (0)1246 455522

ondrives

sales@ondrives.com
www.ondrives.com

Product information updated 1st April 2011 and subject to change. Please contact Sales for the latest prices and availability.