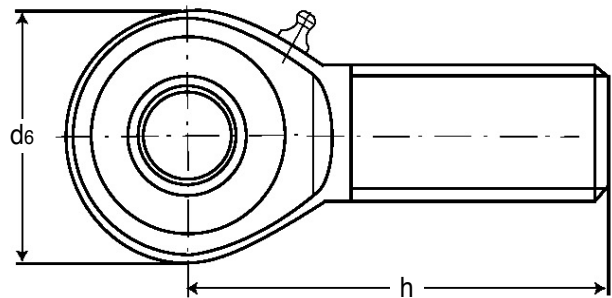
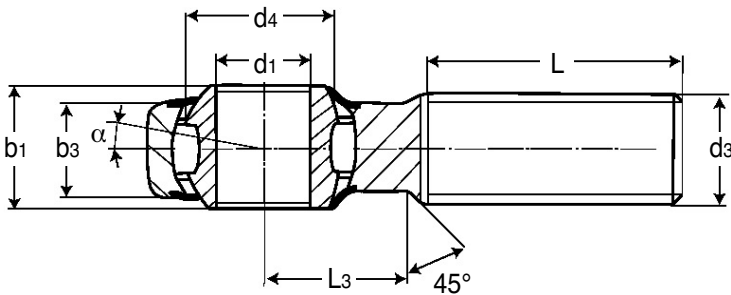


BRTM

BEARINGS

Heavy Duty Male Threaded Rod Ends

with Integral Self-Aligning Roller Bearing : 12 - 30mm Bores, M12 - M30x2

**Discounts:** 26+ -5% 51+ -10% 101+ -15% 151+ -20% 200+ -25%

Part Number		d1	d3	d4	d6	b1	b3	h
Right Hand Thread	Left Hand Thread							
BRTM-12/RH	BRTM-12/LH	12	M12	14.5	32	16	12	54
BRTM-16/RH	BRTM-16/LH	16	M16	19.0	42	21	15	66
BRTM-20/RH	BRTM-20/LH	20	M20x1.5	24.5	50	25	18	78
BRTM-25/RH	BRTM-25/LH	25	M24x2.0	29.5	64	31	22	94
BRTM-30/RH	BRTM-30/LH	30	M30x2.0	34.5	70	37	25	110

L	L3	α°	Weight kg	Speed limit $n_{max}^{(min-1)}$	Basic load rating (N)		Price Each 1 - 4	
					dyn. C	stat. C0	Right Hand Thread	Left Hand Thread
33	19	7.5°	0.088	1125	10250	6600	£90.09	£90.09
40	22	7.0°	0.185	975	13300	8900	£125.06	£125.06
47	28	7.0°	0.340	825	17000	11700	£157.92	£157.92
57	30	5.0°	0.596	600	24900	18500	£205.25	£205.25
66	35	7.5°	0.912	450	32500	24850	£256.13	£256.13

Material

Rod End Housing: Forged steel, tempered, case hardened bearing race, ground and lapped, rolled thread, surface galvanized**Inner Ring:** Ball bearing steel, hardened, superfine ground**Lubrication:** Calcium-complex-soap-grease

Features

- Low maintenance
- Longtime lubrication
- Shields adapter sizes according to ISO12240-4, series K
- Lubrication temperature range -20°C to +120°C
- Lubrication nipple DIN 71412 HZ
- Bearing clearance 15-30µm radial

+44 (0)1246 455500
+44 (0)1246 455522

ondrives

sales@ondrives.com
www.ondrives.com

Product information updated 1st April 2011 and subject to change. Please contact Sales for the latest prices and availability.