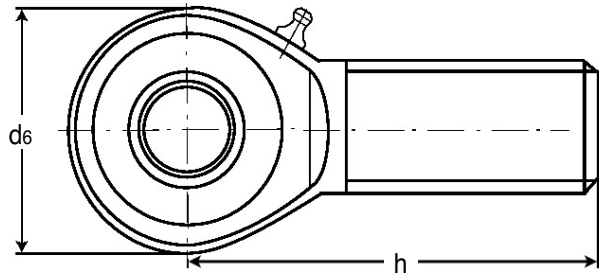
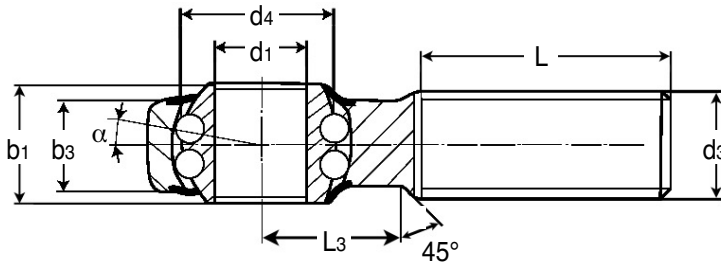


**BRM**

# BEARINGS

## Heavy Duty Male Threaded Rod Ends

with Integral Self-Aligning Ball Bearing : 6 - 30mm Bores, M6 - M30x2



**Discounts:** 26+ -5%   51+ -10%   101+ -15%   151+ -20%   200+ -25%

Part Number Right Hand Thread	Part Number Left Hand Thread	d1	d3	d4	d6	b1	b3	h
BRM-06/RH	BRM-06/LH	6	M6	9.0	20	9	6.75	36
BRM-08/RH	BRM-08/LH	8	M8	10.5	24	12	9.00	42
BRM-10/RH	BRM-10/LH	10	M10	12.0	28	14	10.50	48
BRM-12/RH	BRM-12/LH	12	M12	14.5	32	16	12.00	54
BRM-14/RH	BRM-14/LH	14	M14	17.0	36	19	13.50	60
BRM-16/RH	BRM-16/LH	16	M16	19.0	42	21	15.00	66
BRM-18/RH	BRM-18/LH	18	M18x1.5	21.5	46	23	16.50	72
BRM-20/RH	BRM-20/LH	20	M20x1.5	24.5	50	25	18.00	78
BRM-22/RH	BRM-22/LH	22	M22x1.5	26.0	54	28	20.00	84
BRM-25/RH	BRM-25/LH	25	M24x2.0	29.5	64	31	22.00	94
BRM-30/RH	BRM-30/LH	30	M30x2.0	34.5	70	37	25.00	110

L	L3	α°	Weight kg	Calculation factors		Speed limit n <sub>max</sub> <sup>(min-1)</sup>	Basic load rating (N)		Price Each 1 - 4	
				Y	Yo		dyn. C	stat. C0	Right Hand Thread	Left Hand Thread
22	12	8.0°	0.019	2.09	2.19	1350	2750	650	£36.68	£36.68
25	15	8.5°	0.036	1.80	1.89	1300	4000	1000	£40.97	£40.97
29	15	8.0°	0.060	1.90	1.81	1225	4450	1450	£46.96	£46.96
33	19	7.5°	0.087	1.74	1.82	1125	4950	1800	£55.10	£55.10
36	20	6.0°	0.135	2.36	2.48	1025	5600	2000	£62.86	£62.86
40	22	8.0°	0.190	2.24	2.35	975	6250	2350	£71.00	£71.00
44	25	8.5°	0.270	2.21	2.31	900	7100	2900	£80.36	£80.36
47	28	7.0°	0.338	2.46	2.58	825	7900	3450	£90.44	£90.44
51	26	8.0°	0.450	2.35	2.24	725	9300	3980	£101.03	£101.03
57	30	5.0°	0.602	2.02	2.12	600	11030	5680	£116.56	£116.56
66	35	7.5°	0.922	2.24	2.35	450	14150	7450	£146.61	£146.61

### Material

**Rod End Housing:** Forged steel, tempered, case hardened bearing race, ground and lapped, rolled thread, surface galvanized

**Inner Ring:** Ball bearing steel, hardened, superfine ground

**Lubrication:** Calcium-complex-soap-grease

### Features

- Low maintenance
- Longtime lubrication
- Shields adapter sizes according to ISO12240-4, series K
- Lubrication temperature range -20°C to +120°C
- Lubrication nipple:
  - DIN 3405 D1/A (sizes 6 to 10)
  - DIN 71412 H1 (sizes 12 to 30)
- Bearing clearance 15-40µm radial

+44 (0)1246 455500

+44 (0)1246 455522

**ondrives**

sales@ondrives.com

www.ondrives.com

Product information updated 1st April 2011 and subject to change. Please contact Sales for the latest prices and availability.