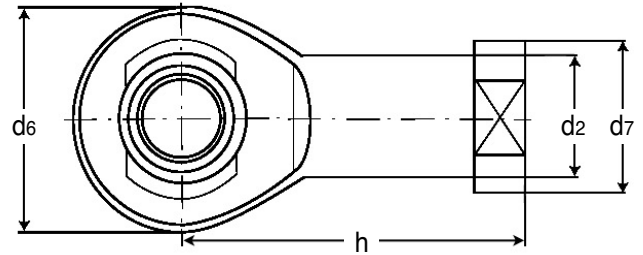
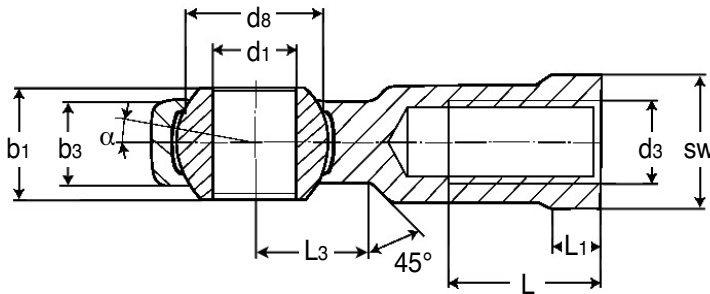


# BEARINGS

**BEF-SS**

**Stainless Heavy Duty Female Threaded Rod Ends**  
with Integral Spherical Plain Bearing : 5 - 25mm Bores, M5 - M24x2



**Discounts: 26+ -5% 51+ -10% 101+ -15% 151+ -20% 200+ -25%**

Part Number		d1	d2	d3	d6	d7	d8	b1	b3	h
Right Hand Thread	Left Hand Thread									
BEF-05/RH-SS	BEF-05/LH-SS	5	9.0	M5	18	11	11.06	8	6.00	27
BEF-06/RH-SS	BEF-06/LH-SS	6	10.0	M6	20	13	12.65	9	6.75	30
BEF-08/RH-SS	BEF-08/LH-SS	8	12.5	M8	24	16	15.82	12	9.00	36
BEF-10/RH-SS	BEF-10/LH-SS	10	15.0	M10	28	19	19.00	14	10.50	43
BEF-10X1.25/RH-SS	BEF-10X1.25/LH-SS	10	15.0	M10 x1.25	28	19	19.00	14	10.50	43
BEF-12/RH-SS	BEF-12/LH-SS	12	17.5	M12	32	22	22.17	16	12.00	50
BEF-12X1.25/RH-SS	BEF-12X1.25/LH-SS	12	17.5	M12x1.25	32	22	22.17	16	12.00	50
BEF-16/RH-SS	BEF-16/LH-SS	16	22.0	M16	42	27	28.52	21	15.00	64
BEF-16X1.5/RH-SS	BEF-16X1.5/LH-SS	16	22.0	M16x1.5	42	27	28.52	21	15.00	64
BEF-20/RH-SS	BEF-20/LH-SS	20	27.5	M20x1.5	50	34	34.87	25	18.00	77
BEF-22/RH-SS	BEF-22/LH-SS	22	30.0	M22x1.5	54	38	38.05	28	20.00	84
BEF-25/RH-SS	BEF-25/LH-SS	25	33.5	M24x2.0	60	42	42.80	31	22.00	94

L	L1	L3	SW	alpha1*	alpha2*	Weight kg	Basic load rating (N)		Price Each 1 - 4	
							dyn. C	stat. C0	Right Hand Thread	Left Hand Thread
10	4.0	10	9	13.0°	7.5°	0.018	2400	7200	£25.76	£25.76
12	5.0	10	11	13.0°	6.5°	0.024	2820	8500	£25.76	£25.76
16	5.0	12	14	14.5°	7.5°	0.045	4280	12800	£28.94	£28.94
20	6.5	15	17	13.5°	8.0°	0.074	6400	18300	£32.30	£32.30
20	6.5	15	17	13.5°	8.0°	0.074	6400	18300	£32.30	£32.30
22	6.5	16	19	13.0°	8.0°	0.109	7600	22300	£40.59	£40.59
22	6.5	16	19	13.0°	8.0°	0.109	7600	22300	£40.59	£40.59
28	8.0	22	22	15.5°	8.5°	0.233	13760	39700	£64.61	£64.61
28	8.0	22	22	15.5°	8.5°	0.233	13760	39700	£64.61	£64.61
33	10.0	26	30	14.5°	9.0°	0.386	18960	54800	£P.O.A	£P.O.A
37	12.0	26	32	15.5°	10.0°	0.520	23480	63600	£97.48	£97.48
42	12.0	30	36	15.0°	10.0°	0.705	27860	79100	£125.76	£125.76

\* angle of tilt

## Material

**Rod End Housing:** Forged stainless steel 1.4301,  
**Joint Ball:** Stainless steel 1.4412, hardened and ground, surface superfinished  
**Race:** Nylon/Teflon/Glass compound

## Features

- Maintenance free
- Thread according to Cetrop RP 103 P
- Adapter sizes according to ISO12240-4, series K

+44 (0)1246 455500  
+44 (0)1246 455522

**ondrives**

sales@ondrives.com  
www.ondrives.com

Product information updated 1st April 2011 and subject to change. Please contact Sales for the latest prices and availability.