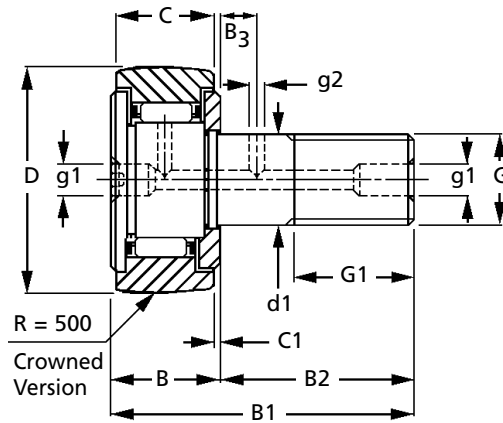
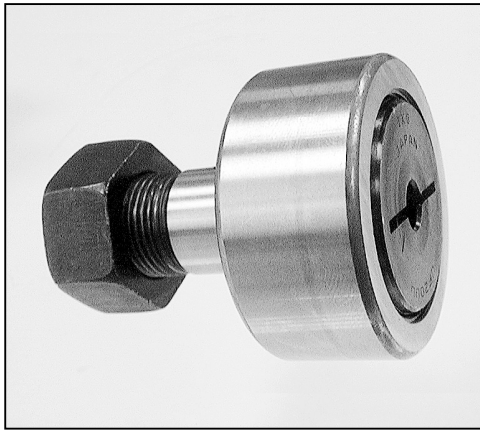


CF

BEARINGS

Standard Type Cam Followers Sealed Stud Diameter 3 - 30mm



Discounts: 20+ -8.5%

Part Number		Weight (Ref.) g	Mounting Dimension f Min. mm	Max. Tightening Torque N*m	Basic Dynamic Load Rating C N	Basic Static Load Rating C ₀ N	Max. Allowable Load N
Crowned outer ring	Cylindrical outer ring						
-	CF3UU	4.3	6.8	0.29	1471	980	382
-	CF4UU	7.4	8.3	0.78	2059	1569	833
-	CF5UU	10.3	9.3	2.26	2549	2157	1372
CF6UUR	CF6UU	18.5	11.0	2.94	3628	3628	1961
CF8UUR	CF8UU	28.5	13.0	7.85	4216	4707	4609
CF10UUR	CF10UU	45.0	16.0	11.77	5393	6864	6864
CF10-1UUR	CF10-1UU	60.0	16.0	11.77	5393	6864	6864
CF12UUR	CF12UU	95.0	21.0	21.57	7943	9806	9806
CF12-1UUR	CF12-1UU	105.0	21.0	21.57	7943	9806	9806
CF16UUR	CF16UU	170.0	26.0	56.88	12062	18338	18338
CF18UUR	CF18UU	250.0	29.0	83.36	14709	25203	25203
CF20UUR	CF20UU	460.0	34.0	117.68	20692	34617	32165
CF20-1UUR	CF20-1UU	385.0	34.0	117.68	20692	34617	32165
CF24UUR	CF24UU	815.0	40.0	215.75	30498	52661	44620
CF24-1UUR	CF24-1UU	1140.0	40.0	215.75	30498	52661	44620
CF30UUR	CF30UU	1870.0	49.0	451.11	45404	85121	73647
CF30-1UUR	CF30-1UU	2030.0	49.0	451.11	45404	85121	73647
CF30-2UUR	CF30-2UU	2220.0	49.0	451.11	45404	85121	73647

Part Number		d1 (h7) Stud Dia. mm	D	C ^{+0.00 -0.12}	G	G1	B max.	B1 max.	B2	B3	C1	g1	g2	r min(1)	Price Each 1- 19	
Crowned outer ring	Cylindrical outer ring														Crowned outer ring	Cylindrical outer ring
-	CF3UU	3	10	7	M3 x 0.50	5.0	8.0	17.0	9.0	-	0.5	-	-	0.2	-	£23.28
-	CF4UU	4	12	8	M4 x 0.70	6.0	9.0	20.0	11.0	-	0.5	-	-	0.3	-	£20.59
-	CF5UU	5	13	9	M5 x 0.80	7.5	10.0	23.0	13.0	-	0.5	*3.1	-	0.3	-	£19.38
CF6UUR	CF6UU	6	16	11	M6 x 1.00	8.0	12.2	28.2	16.0	-	0.6	*4.0	-	0.3	£19.34	£17.72
CF8UUR	CF8UU	8	19	11	M8 x 1.25	10.0	12.2	32.2	20.0	-	0.6	*4.0	-	0.3	£19.34	£17.97
CF10UUR	CF10UU	10	22	12	M10 x 1.25	12.0	13.2	36.2	23.0	-	0.6	*4.0	-	0.3	£19.75	£17.97
CF10-1UUR	CF10-1UU	10	26	12	M10 x 1.25	12.0	13.2	36.2	23.0	-	0.6	*4.0	-	0.3	£20.86	£19.34
CF12UUR	CF12UU	12	30	14	M12 x 1.50	13.0	15.2	40.2	25.0	6	0.6	6.0	3	0.6	£27.14	£22.58
CF12-1UUR	CF12-1UU	12	32	14	M12 x 1.50	13.0	15.2	40.2	25.0	6	0.6	6.0	3	0.6	£28.68	£23.99
CF16UUR	CF16UU	16	35	18	M16 x 1.50	17.0	19.6	52.1	32.5	8	0.8	6.0	3	1.0	£30.30	£25.23
CF18UUR	CF18UU	18	40	20	M18 x 1.50	19.0	21.6	58.1	36.5	8	0.8	6.0	3	1.0	£32.85	£30.30
CF20UUR	CF20UU	20	52	24	M20 x 1.50	21.0	25.6	66.1	40.5	9	0.8	8.0	4	1.0	£43.40	£40.11
CF20-1UUR	CF20-1UU	20	47	24	M20 x 1.50	21.0	25.6	66.1	40.5	9	0.8	8.0	4	1.0	£43.40	£38.74
CF24UUR	CF24UU	24	62	29	M24 x 1.50	25.0	30.6	80.1	49.5	11	0.8	8.0	4	1.0	£70.36	£64.95
CF24-1UUR	CF24-1UU	24	72	29	M24 x 1.50	25.0	30.6	80.1	49.5	11	0.8	8.0	4	1.0	£42.14	£68.95
CF30UUR	CF30UU	30	80	35	M30 x 1.50	32.0	37.0	100.0	63.0	15	1.0	8.0	4	1.0	£89.74	£84.30
CF30-1UUR	CF30-1UU	30	85	35	M30 x 1.50	32.0	37.0	100.0	63.0	15	1.0	8.0	4	1.0	£105.88	£97.57
CF30-2UUR	CF30-2UU	30	90	35	M30 x 1.50	32.0	37.0	100.0	63.0	15	1.0	8.0	4	1.0	£115.33	£108.05

+44 (0)1246 455500
+44 (0)1246 455522

ondrives

sales@ondrives.com
www.ondrives.com

Product information updated 1st April 2011 and subject to change. Please contact Sales for the latest prices and availability.

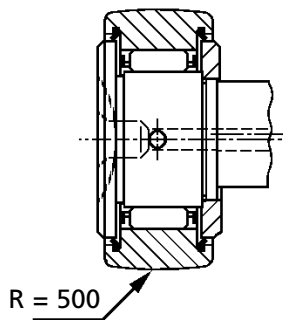
BEARINGS

CF

Standard Type Cam Followers Sealed

Stud Diameter 3 - 30mm

CF..UUR Type



CF..UU Type

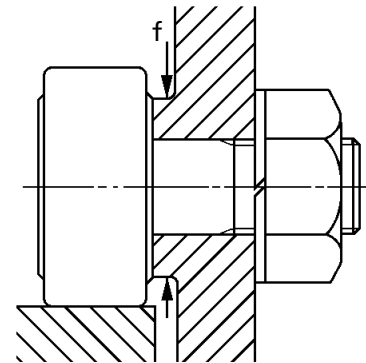
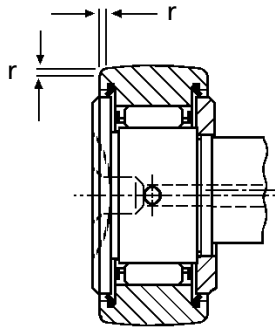


Table 1: Track Capacity

Type: metric series (§§) Cam Followers			
Part No.(§) With Crowned Outer Ring	Track Capacity N	Part No.(§) With Cylindrical Outer Ring	Track Capacity N
-	-	CF3	1372
-	-	CF4	1765
-	-	CF5	2255
CF6R	1078	CF6	3432
CF8R	1372	CF8	4020
CF10R	1569	CF10	4707
CF10-1R	2059	CF10-1	5491
CF12R	2451	CF12	7060
CF12-1R	2745	CF12-1	7453
CF16R	3040	CF16	11179
CF18R	3628	CF18	14415
CF20R	5197	CF20	23241
CF20-1R	4511	CF20-1	20986
CF24R	6570	CF24	34225
CF24-1R	8041	CF24-1	39815
CF30R	9218	CF30	52661
CF30-1R	10002	CF30-1	55995
CF30-2R	10787	CF30-2	59330

Table 2: Track Capacity Factor

Hardness HRC	Tensile Strength N/mm ²	Track Capacity Factor	
		With Crowned Outer Ring	With Cylindrical Outer Ring
20	755	0.22	0.37
25	843	0.31	0.46
30	951	0.45	0.58
35	1078	0.65	0.75
38	1176	0.85	0.89
40	1245	1.00	1.00
42	1333	1.23	1.15
44	1431	1.52	1.32
46	1529	1.85	1.51
48	1637	2.27	1.73
50	1755	2.80	1.99
52	1882	3.46	2.29
54	2010	4.21	2.61
56	2147	5.13	2.97
58	2294	6.26	3.39

Track capacity is defined as the load which can be continuously applied on a Cam Follower placed on a steel track surface without causing deformation and indentation (dent) on the track surface. The track capacities shown in Table 1 are applicable when the hardness of the mating track surface differs from HRC40, the track capacity is obtained by multiplying the value with a track capacity factor shown in Table 2.

If lubrication between the outer ring and the mating track surface is insufficient, seizure and/or wear may occur depending on the application. Therefore, it is suggested that attention should be paid to both lubrication and surface roughness of the mating track especially in case of high speed rotation such as cam mechanisms.

Allowable Rotational Speed is affected by mounting and operating conditions. The d_1/n values in general operation under pure radial load are shown below for reference. It is recommended to use 1/10 of the table values in actual applications taking account of axial loads that may be applied.

$d_1 \cdot n$ Values where d_1 = Stud Diameter (mm) and n = Number of Rotations per minute (Rpm)

Max $d_1 \cdot n$ Values With cage Type = 84,000 d_1/n (with grease lubricant); Full Complement Type = 42,000 d_1/n (with grease lubricant)

Material

Carbon Steel. Seals: Rubber

Other Info.

Seals are a special synthetic rubber assembled in the outer ring.

Screwdriver slot for mounting only available while stocks last. New stocks will feature hexagon sockets.

Stud designed to fit H7 housing.

Notes

(1) Minimum allowable value of chamfer "r"

*=one oil hole prepared only in the flange head of stud.

(§) It is also applicable to Full complement type, with hexagon hole type and sealed type.

(§§) Only representative types are shown in the table, but applicable to all metric sizes.

+44 (0)1246 455500

+44 (0)1246 455522

ondrives

sales@ondrives.com

www.ondrives.com

Product information updated 1st April 2011 and subject to change. Please contact Sales for the latest prices and availability.